

Proteomic Biomarkers for the Early Detection of Acute Kidney Injury

Stefan Herget-Rosenthal^{1,#}, Jochen Metzger², Amaya Albalat^{3,*},
Vasiliki Bitsika^{4,*} and Harald Mischak^{2,3,#,*}

¹*Department of Medicine and Nephrology, Rotes Kreuz Krankenhaus, Bremen,*

²*Mosaiques Diagnostics GmbH, Hannover,*

³*BHF Glasgow Cardiovascular Research Centre, University of Glasgow, Glasgow,*

⁴*Biomedical Research Foundation Academy of Athens,*

^{1,2}*Germany*

³*UK*

⁴*Greece*

1. Introduction

Acute kidney injury (AKI), previously termed acute renal failure, is a frequent clinical condition in critically ill patients, especially in intensive care units (ICU). It is characterized by a rapid decline or loss of renal function. Its incidence varies from 1-7 % of all hospitalized patients to 30-50 % of patients in ICU [29,69]. Clinical manifestations include a rapid decrease (oliguria) or cessation (anuria) of urine output and of glomerular filtration rate (GFR) below 10 mL/min within hours to days. AKI is further indicated by accumulation of nitrogenous-waste substances in blood resulting in elevated serum levels of creatinine and blood urea nitrogen (BUN). It is important to differentiate AKI from chronic kidney disease (CKD), as AKI has the potential to be reversible. AKI and CKD can be differentiated by the dynamics nitrogenous-waste substances increase in the serum and urinary output decreases.

Irrespective of the progress being made in the understanding of the pathophysiology of AKI and its underlying processes and the advances in critical care medicine, mortality rate associated with AKI remains high especially in ICU patients at more than 50 % [97]. In addition, a significant proportion of surviving patients (20 %) develops CKD and end-stage renal disease, requiring chronic renal replacement therapy [8,32]. Long-term outcome is worse for patients after recovery from AKI [45,14], further impacting health care cost and quality of life [10].

Advances in our understanding, prevention and treatment of AKI have been hampered especially by two factors. Firstly, until recently there was a lack of uniform criteria for definition and classification of AKI. Secondly, there is still an incomplete understanding of the pathogenesis of AKI [72]. The risk to develop AKI is determined by patient's

* Members of EuroKUP

Members of EUTox

susceptibility and exposure or causative factors. Patient susceptibility in developing countries varies from that of the developed countries. In developing countries, AKI is more common in young and pediatric patients, while in developed countries elderly patients are predominant [95,34]. However, it is difficult to differentiate demographic variables which directly contribute to the risk of developing AKI from those that are more attributed to the underlying disease [72]. Conditions known to cause AKI in susceptible populations include sepsis, ischemia, heart failure, liver disease, major surgery (especially vascular and cardiac), rhabdomyolysis, urinary tract obstruction and various nephrotoxic drugs and radiocontrast agents [80]. In critically ill patients the most common cause of AKI is sepsis, accounting for 50 % of all cases [2,4,5].

2. Diagnostic problem

In order to standardize and detect AKI, two different sets of definition criteria have been recently established. The Acute Dialysis Quality Initiative developed the RIFLE criteria for the diagnosis of acute renal failure in critically ill patients [6] and the Acute Kidney Injury Network developed the AKIN criteria for the diagnosis of AKI [51]. Both criteria (**Figure 1**) for diagnosis are mainly based on measurements of urine output and serum creatinine. In clinical practice, however, AKI is predominantly detected by changes in serum creatinine [51].

RIFLE criteria (Bellomo et al., Crit Care 2004, [6])

Stage	Serum creatinine ↑ or GFR ↓	Urine output ↓
Risk	150 % or > 25 – 50 %	< 0.5 mL/kg/h for 6 h
Injury	200 % or > 50 – 75 %	< 0.5 mL/kg/h for 12 h
Failure	300 % or ≥ 4 mg/dL or > 75 %	< 0.3 mL/kg/h for 24 h or anuria for 12 h
Loss	Persistent AKI = Complete loss of renal funktion > 4 wk	
ESRD	End-stage renal disease = Complete loss of renal function > 3 mo	

AKIN criteria (Mehta et al., Crit Care 2007, [51])

Stage	Serum creatinine ↑	Urine output ↓
1	≥ 0.3 mg/dL or 150 – 200 %	< 0.5 mL/kg/h within 6 – 12 h
2	201 – 300 %	< 0.5 mL/kg/h for > 12 h
3	> 300 % or dialysis	< 0.3 mL/kg/h for > 24 h or anuria for > 12 h

Fig. 1. AKI staging according to the RIFLE and AKIN criteria.

Creatinine is a 113 Dalton molecule derived from creatine metabolism after creatinine's release from the muscle. As creatinine is freely filtered by the glomerulus and excreted without significant metabolic changes or reabsorption by the kidney, this molecule has been

a useful indicator of kidney function. However, serum creatinine has important limitations as a tool for assessing GFR. Firstly, creatinine levels are affected by a variety of non-renal factors such as age, gender, muscle mass, diet and nutritional status [76]. Although equations have been developed to correct for some of these factors, these are only applicable for CKD but not for AKI as they require stable creatinine metabolism [41]. Secondly, serum creatinine concentration and its value is influenced by its volume of distribution that can be substantially affected by volume overload, a common situation in AKI [75]. Finally, and probably most importantly, serum creatinine increases only after substantial loss of GFR resulting in a lag phase in the temporal relationship between serum creatinine increase and loss of GFR. As a result, current clinical diagnosis of AKI based on creatinine limits its early detection in clinical routine as well as the early implementation of preventive measures. Therefore, the development of new AKI biomarkers have had high priority in the nephrological community during the last years with the aim to identify markers that are superior to serum creatinine in the early detection of AKI. In the following part we will shortly summarise the most promising single biomarkers for AKI.

3. Single biomarkers for AKI

New biomarkers for AKI can be categorized as inflammatory mediators, excreted tubular proteins and surrogate markers indicative for tubular damage (albumin, α 1-microglobulin, β 2-glycoprotein, plasma retinol binding protein, N-acetyl- β -D-glucosaminidase (NAG)) and liver-type fatty acid binding protein (L-FABP) [90,18]. The most promising of the AKI biomarker candidates, namely neutrophil gelatinase-associated lipocalin (NGAL), kidney injury molecule-1 (KIM-1), interleukin-18 (IL-18) and cystatin C (CysC) will be presented in more detail:

3.1 Neutrophil gelatinase-associated lipocalin (NGAL)

Function: NGAL, also known as lipocalin-2, is a 25-kDa protein strongly up-regulated by interleukin-1 during inflammation. NGAL has the ability of sequestering siderophores, microbial iron-chelating agents required for bacterial growth, and prevents urinary tract infection.

Diagnostic evidence: NGAL has been presented as biomarker for early detection of AKI and for AKI prognosis [68]. The first study that pointed out the association of NGAL with AKI development was performed by Mishra and colleagues in 2005 [55]. In this prospective study urine and plasma NGAL rose significantly in children developing AKI after cardiac surgery within 2 h postoperatively. However, the classification performance of NGAL decreased in similar studies performed in adults also having cardiac surgery [21] possibly due to confounding variables and comorbid conditions that accumulate with age. Other positive results have been obtained when NGAL has been tested as a biomarker of AKI in kidney transplantation and the subsequent development of delayed graft function [56]. Among other, NGAL was tested in hemolytic uremic syndrome [78], urinary tract infections [96], critically ill children and adults [91,70] and also CKD [20]. Taken together, NGAL is the most promising novel renal biomarker in urine and also in plasma. However, as pointed out by Chawla and Kellum [9], NGAL is expressed in multiple organs affording further studies to understand how non-kidney sources of NGAL have an impact on urinary NGAL. As a consequence, prospective multicenter studies are urgently required to determine the

performance of plasma and urinary NGAL in unselected ICU patient populations including patients with preexisting CKD [53,50]. Since the reported cut-off values for NGAL differ across a wide range it seems reasonable to speculate, that each clinical setting may require different cut-off values [57].

3.2 Interleukin-18 (IL-18)

Function: IL-18 is an 18-kDa proinflammatory cytokine secreted by macrophages and other antigen presenting cells. It has the ability to induce interferon γ production in type-1 T helper cells and is a sensitive mediator of ischemic injury in different organs such as heart, brain and kidney [73].

Diagnostic evidence: A first evidence for IL-18's role in ischemic AKI was given by animal studies [52,26]. Later studies in humans suggested that urinary IL-18 may serve as marker of AKI development after cardiac surgery, of graft function after kidney allograft transplantation, and of mortality in acute respiratory distress syndrome [61,62,89]. Siew et al. [71] reported that urinary IL-18, when measured within 48 h of AKI development, could not reliably predict AKI in a broadly selected, critically ill adult patients cohort. Despite this negative result, urinary IL-18 remained predictive in this study for worse clinical outcome such as death and acute dialysis within 28 days of ascertainment independently of other factors [71]. A matter of concern is that IL-18 increases in a variety of pathophysiological conditions, such as sepsis, inflammatory arthritis, inflammatory bowel disease, systemic lupus erythematosus, psoriasis, hepatitis and multiple sclerosis. This property significantly limits its application, due to reduced sensitivity and specificity [81].

3.3 Kidney injury molecule-1 (KIM-1)

Function: KIM-1 is a type 1 transmembrane glycoprotein that is undetectable in normal kidneys but highly expressed by proximal tubules epithelial cells after ischemic or toxic injury [31,25] with the ectodomain being shedded into the tubular lumen [100]. It functions as a phosphatidyl-serine receptor and confers a phagocytic phenotype on epithelial cells, most likely to clear cellular debris during enhanced apoptosis [30].

Diagnostic evidence: In previous studies in adults, KIM-1 was able to discriminate patients with acute tubular necrosis from those without, and predicted AKI in adults undergoing cardiac surgery [24,82,87]. In another prospective study on 201 hospital patients with AKI, an increase of urinary KIM-1 was associated with increased mortality or dialysis requirement [44]. Its potential use as an early marker is based so far on limited data: a rise in its urinary levels was detectable before the increase of BUN and creatinine in plasma during cadmium-induced renal damage [64] as well as its expression in biopsy sections of kidney allograft recipients before histological signs of acute tubular necrosis became evident [99].

3.4 Cystatin C (CysC)

Function: CysC is a cysteine protease inhibitor that is synthesized and continuously released into the blood by nucleated cells. Its levels are not significantly affected by age, gender, infection, liver disease or muscle mass in contrast to serum creatinine. This molecule is freely filtered by the glomerulus but, unlike creatinine, reabsorbed and metabolized by the

proximal tubule. Therefore, elevated levels of CysC in serum correlate inversely with GFR while increased urinary CysC indicates renal tubular damage [40] and in fact the diagnostic accuracy of serum CysC to reflect GFR has been shown to be superior compared to serum creatinine since its levels are less influenced by inflammation, infection, body mass, diet and drugs [65].

Diagnostic evidence: Serum CysC is not a biomarker of AKI since its levels are not a direct marker of renal injury, and rather serves as GFR marker [73]. Several studies have focused on the diagnostic accuracy of CysC in predicting AKI. Unfortunately, results have been conflicting. In high-risk patients serum CysC detected AKI 1-2 days earlier than serum creatinine [27]. However, in a mixed heterogeneous, multicenter ICU population serum and urinary CysC were poor predictors of AKI and the need for renal replacement therapy [66]. In a meta-analysis performed by Zhang et al. [101] using the data of 19 studies from 11 countries and 3,336 patients, it was found that serum CysC could be used as reliable marker with an odds ratio of 23.5 in the prediction of AKI whereas urinary CysC showed only moderate diagnostic accuracy with an odds ratio of only 2.6.

Endre et al. [17] in a recent prospective observational study of 529 ICU patients and Lameire et al. [38] in a commentary on this work came to a sobering conclusion on the diagnostic and prognostic performance of these single AKI markers. In the study of Endre et al. [17] none of these markers reached an AUC value above 0.7 for the prediction of AKI on ICU entry and of death in 7 days, while urinary NGAL, CysC and IL-18 predicted dialysis in 7 days with AUC's of 0.79, 0.71 and 0.73, respectively. This is in contrast to some previous studies with AUC values above 0.9 [47,55] which was attributed by their selection of homogeneous study populations [38]. In conclusion, the single AKI markers performed well in selected, predominantly homogenous patient cohorts, whereas they failed for the most part in multicenter, heterogeneous cohorts which rather represent clinical routine (see **Table 1** for a listing of clinical studies). Due to this, multimarker patterns were suggested by experts in this field for which proteomic technologies are predestined.

4. Proteomic approaches and biomarkers profiles for AKI

The main rationale for the application of proteome analysis in the context of AKI is that AKI is a multifactorial and heterogeneous process. Due to the diversity of pathological processes leading to AKI, it is highly unlikely that one single diagnostic marker may serve as reliable predictor for all AKI forms. A broadly applicable, multimarker diagnostic model will avoid this. The advantage of such a multimarker strategy is that it allows compensation for potential biological, pre-analytical and analytical variances of single biomarkers.

Mass spectrometry combined with chromatographic separation techniques has advanced exceptionally in recent years and has become a valuable tool for profiling of human proteomes and a systematic search of protein and peptide markers indicative for various renal and non-renal diseases without the need for a hypothesis-driven propagation process [54,19,1,93].

While proteome analysis aiming at biomarkers for renal disease can be focused on urine, plasma, or serum, urine seems to be the most attractive body fluid for several reasons. Firstly, urine can be obtained in large quantities in a non-invasive manner. Secondly, the

Reference	Marker	Clinical setting	No. of patients/ AKI cases	AUC
Koyner et al., 2008 [35]	uCysC	Post-cardiac surgery	72/34	0.724
Liangos et al., 2009 [42]	uCysC	CPB	103/13	0.50
Koyner et al., 2010 [36]	uCysC	Post-cardiac surgery	123/46	0.72
Royakkers et al., 2011 [66]	uCysC	Mixed ICU	151/91	0.72
Endre et al., 2011 [17]	uCysC/uCr	Mixed ICU	529/229	0.67
Endre et al., 2011 [17]	uCysC/uCr	Mixed ICU with eGFR <60 ml/min	24/3	0.69
Endre et al., 2011 [17]	uCysC/uCr	Mixed ICU with eGFR <60 ml/min	12/8	0.88
Endre et al., 2011 [17]	uCysC/uCr	Mixed ICU with eGFR ≥60 ml/min	153/34	0.68
Endre et al., 2011 [17]	uCysC/uCr	Mixed ICU with eGFR ≥60 ml/min	104/41	0.77
Wald et al., 2010 [88]	pCysC	CPB	150/47	0.68
Nejat et al., 2010 [58]	pCysC	Mixed ICU	444/198	0.80
Herget-Rosenthal et al., 2004 [27]	sCysC	Mixed ICU	85/44	0.82
Herget-Rosenthal et al., 2004 [27]	sCysC	Mixed ICU	85/44	0.97
Haase-Fielitz et al., 2009 [23]	sCysC	Post-cardiac surgery	100/23	0.83
Haase et al., 2009 [22]	sCysC	Post-cardiac surgery	100/46	0.76
Chung et al., 2010 [11]	sCysC	Liver cirrhosis	53/9	0.735
Krawczeski et al., 2010 [37]	sCysC	CPB-children	374/119	0.81
Soto et al., 2010 [74]	sCysC	Nonsurgical ED	616/130	0.87
Mishra et al., 2005 [55]	uNGAL	CPB-children	71/20	0.998
Zappitelli et al., 2007 [97]	uNGAL	Mixed ICU - children	140/106	0.78
Koyner et al., 2008 [35]	uNGAL	Post-cardiac surgery	72/34	0.705
Xin et al., 2008 [93]	uNGAL	Post-cardiac surgery	33/9	0.883
Wagener et al., 2008 [85]	uNGAL	Post-cardiac surgery	426/80	0.603
Bennett et al., 2008 [7]	uNGAL	CPB	196/99	0.95
Liangos et al., 2009 [42]	uNGAL	CPB	103/13	0.50
Tuladhar et al., 2009 [79]	uNGAL	CPB	50/9	0.96
Makris et al., 2009 [47]	uNGAL	Multi-trauma patients in ICU	31/11	0.977
Siew et al., 2009 [70]	uNGAL	Mixed ICU	451/86	0.64
Han et al., 2009 [24]	uNGAL	Post-cardiac surgery	90/36	0.59
Han et al., 2009 [24]	uNGAL, NAG & uKIM-1	Post-cardiac surgery	90/36	0.75

Reference	Marker	Clinical setting	No. of patients/ AKI cases	AUC
Koyner et al., 2010 [36]	uNGAL	Post-cardiac surgery	123/46	0.72
McIlroy et al., 2010 [50]	uNGAL	Post-cardiac surgery, pre-op. eGFR 60-90 ml/min	142/35	0.66
McIlroy et al., 2010 [50]	uNGAL	Post-cardiac surgery, pre-op. eGFR 90-120 ml/min	109/13	0.88
Metzger et al., 2010 [53]	uNGAL	Mixed ICU	30/16	0.54
Wagener et al., 2011 [86]	uNGAL/uCr	Liver transplantation	92/37	0.8
Doi et al., 2011 [16]	uNGAL	Mixed ICU	339/131	0.70
Endre et al., 2011 [17]	uNGAL/uCr	Mixed ICU	529/229	0.66
Endre et al., 2011 [17]	uNGAL/uCr	Mixed ICU with eGFR <60 ml/min	12/8	0.85
Endre et al., 2011 [17]	uNGAL/uCr	Mixed ICU with eGFR ≥60 ml/min	153/34	0.68
Endre et al., 2011 [17]	uNGAL/uCr	Mixed ICU with eGFR ≥60 ml/min	83/17	0.69
Endre et al., 2011 [17]	uNGAL/uCr	Mixed ICU with eGFR ≥60 ml/min	104/41	0.71
Haase et al., 2009 [22]	pNGAL	Post-cardiac surgery	100/46	0.77
Haase-Fielitz et al., 2009 [23]	pNGAL	Post-cardiac surgery	100/23	0.8
Tuladhar et al., 2009 [79]	pNGAL	CPB	50/9	0.80
Cruz et al., 2010 [13]	pNGAL	Mixed ICU	301/133	0.78
Constantin et al., 2010 [12]	pNGAL	Mixed ICU	88/52	0.92
Wheeler et al., 2008 [91]	sNGAL	children with SIRS or septic shock in ICU	143/22	0.677
Koyner et al., 2008 [36]	uKIM-1	Post-cardiac surgery	123/46	0.67
Han et al., 2009 [24]	uKIM-1	Post-cardiac surgery	90/36	0.68
Liangos et al., 2009 [42]	uKIM-1	CPB	103/13	0.78
Metzger et al., 2010 [53]	uKIM-1	Mixed ICU	30/16	0.71
Endre et al., 2011 [17]	uKIM-1/uCr	Mixed ICU	529/229	0.66
Endre et al., 2011 [17]	uKIM-1/uCr	Mixed ICU with eGFR <60 ml/min	24/3	0.73
Endre et al., 2011 [17]	uKIM-1/uCr	Mixed ICU with eGFR ≥60 ml/min	83/17	0.72
Endre et al., 2011 [17]	uKIM-1/uCr	Mixed ICU with eGFR ≥60 ml/min	104/41	0.66
Parikh et al., 2006 [62]	uIL-18	CPB-children	71/20	0.75
Xin et al., 2008 [93]	uIL-18	Post-cardiac surgery	33/9	0.894

Reference	Marker	Clinical setting	No. of patients/ AKI cases
Liangos et al., 2009 [42]	uIL-18	CPB	103/13
Metzger et al., 2010 [53]	uIL-18	Mixed ICU	30/16
Siew et al., 2010 [71]	uIL-18	Mixed ICU	451/86
Doi et al., 2011 [16]	uIL-18	Mixed ICU	339/131
Endre et al., 2011 [17]	uIL-18/uCr	Mixed ICU	529/229
Endre et al., 2011 [17]	uIL-18/uCr	Mixed ICU with eGFR <60 ml/min	12/8
Endre et al., 2011 [17]	uIL-18/uCr	Mixed ICU with eGFR ≥60 ml/min	83/17
Liangos et al., 2009 [43]	pIL-8	CPB	143/59
Han et al., 2009 [24]	uNAG	Post-cardiac surgery	90/36
Liangos et al., 2009 [42]	uNAG	CPB	103/13
Doi et al., 2011 [16]	uNAG	Mixed ICU	339/131
Portilla et al., 2007 [63]	uL-FABP	Post-cardiac surgery - children	40/21
Doi et al., 2011 [16]	uL-FABP	Mixed ICU	339/131
Matsui et al., 2012 [49]	uL-FABP	Post-cardiac surgery	85/48
Katagiri et al., 2012 [33]	uL-FABP & uNAG	CPB	77/28

Abbreviations: AKI, acute kidney injury; AUC, area under the curve; CPB, cardiopulmonary bypass; Cr, creatinine; CysC, Cystatin C; ED, emergency department; eGFR, estimated glomerular filtration rate; IL-18, Interleukin-18; KIM-1, Kidney injury molecule-1; L-FABP, Liver-type fatty acid-binding protein; NAG, N-acetyl- β -D-glucosaminidase; NGAL, Neutrophil gelatinase-associated lipocalin; p, plasma; s, serum; u, urinary.

Table 1. Diagnostic performance of different single biomarkers of AKI in different clinical settings

urinary proteome is relative stable since it is retained in the bladder for several hours, providing sufficient time for complete proteolytic processing by endogenous proteases. The low molecular weight proteome of the urine does not undergo any significant change if urine is stored for up to 3 days at 4°C or 6 h at room temperature [67,77].

For these reasons, several groups have embraced the search for urinary proteomic biomarkers for the early detection of AKI using different analytical platforms. In an early study conducted in 2005, Nguyen et al. [59] identified 4 proteins with a mass-to-charge ratio (m/z) of 6.4, 28.5, 43 and 66 kDa, being increased at baseline and at 2 and 6 h post-operation in the urine of children that developed ischemic kidney injury 2-3 days after cardiopulmonary bypass (CPB). These proteins in combination allowed detection of AKI in this small patient cohort with 100 % sensitivity and specificity. One of these proteins (m/z 6.4) was later identified as aprotinin [60], a very basic polypeptide with serine protease inhibitory activity, negatively affecting both coagulation and fibrinolysis [48]. The other 3 peaks were identified as acute-phase proteins α 1-microglobulin (28.5 kDa), α 1-acid glycoprotein (43 kDa) and albumin (66 kDa) [15].

Using the same analytical platform Ho and colleagues identified, besides known up-regulated tubular injury markers, two novel peptide peaks at 2.43 and 2.78 kDa that were significantly increased in patients after CPB surgery not developing AKI [28]. The authors were able to resolve one of these peptides as hepcidin-25, the active form of hepcidin, which is secreted by the liver to maintain iron homeostasis and which is up-regulated during acute phase response [83].

Metzger et al. [53] used capillary electrophoresis mass spectrometry to identify urinary peptide markers predictive for AKI in urine samples obtained from ICU patients who later developed AKI defined by a serum creatinine increase ≥ 50 % in ≤ 48 hours (maximum 5 days prior AKI) or remained normal in kidney function. The 20 statistically most significant peptide markers in a comparative group analysis (**Figure 2**) were combined to a support vector machine-based classifier, which allowed classification of a blinded test set of ICU patient samples ($n=20$, 9 case and 11 controls) with 89 % sensitivity and 82 % specificity. In order to evaluate general applicability, this classifier was further applied to the classification of urine samples from hematopoietic stem cell transplanted patients of whom 13 developed AKI after transplantation and 16 did not. AUC in this validation set was 0.90 with sensitivity and specificity values of 94 and 82 %, respectively. The 20 polypeptides were identified by amino acid sequencing as degradation products of 6 proteins. Fragments of albumin, α 1-antitrypsin and β 2-microglobulin were up-regulated, fibrinogen α chain, collagen 1 α (I) and collagen 1 α (III) were down-regulated in AKI. The alterations of these polypeptides identified in the urine may be attributed to differences in production rates, increased assembly into filaments, increased proteolysis in the plasma or urine, abnormal renal function, or a combination of the above, and may be relevant at different points of the disease process as outlined in **figure 3**.

A recent study of Maddens et al. [46] using LTQ-OrbiTRAP for mass spectrometry analysis identified urinary NGAL, thioredoxin, gelsolin, chitinase 3-like protein 1 and 3 and acidic mammalian chitinase as being the most discriminating markers for experimental sepsis-induced AKI in mice. Differential expression was verified by immunoblot analysis in urine,

plasma and renal tissue homogenates. In a small set of human septic patients the authors detected possible differences in excretion levels of the human homologue of chitinase 3-like protein 1 and acidic mammalian chitinase protein between patients with compared to those without AKI. However, the study was too small to draw any conclusions. The potential use of chitinase proteins as sensitive markers for diagnosis of septic-induced AKI is limited, as the authors stated, mostly by the fact that increased levels are also detectable during inflammatory responses, such as asthma or inflammatory bowel disease, liver fibrosis and also for non-AKI patients of the AKI study group without recognizable comorbidities.

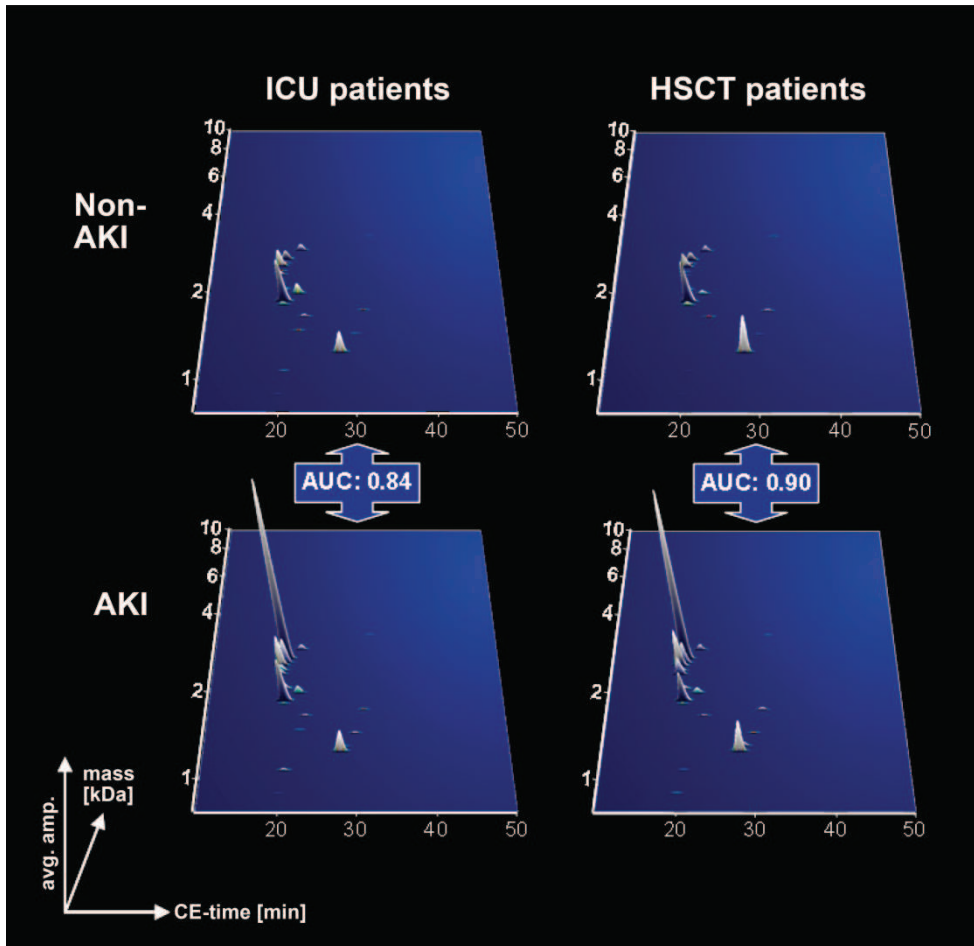


Fig. 2. Distribution of urinary peptides included in the AKI-specific biomarker panel of Metzger et al., 2010 [53]. AUC's for ROC comparison of AKI and non-AKI within the ICU and HSCT patient groups are shown in the insets. Abbreviations: AKI, acute kidney injury; AUC, area under the curve; HSCT, hematopoietic stem cell transplantation; ICU, intensive care unit; ROC, receiver operating characteristics. Modified from data shown in Metzger et al., 2010 [53].

Gel-based proteomics has also been tested as a platform in the search for biomarkers of AKI. Using this methodological approach, Aregger et al [3] identified 3 proteins in a cohort of 36 patients undergoing CPB to be differentially regulated between patients who developed AKI and those who not. The identified proteins were albumin, being upregulated, and zinc α 2-glycoprotein and adrenomedullin-binding protein, both down-regulated. Limiting the results of the study, only zinc α 2-glycoprotein was applied to a validation set of 22 patients with AKI and 46 patients without to test its diagnostic performance in immunoblot and ELISA. An AUC value of 0.68 revealed that zinc α 2-glycoprotein is only a weak predictor of AKI.

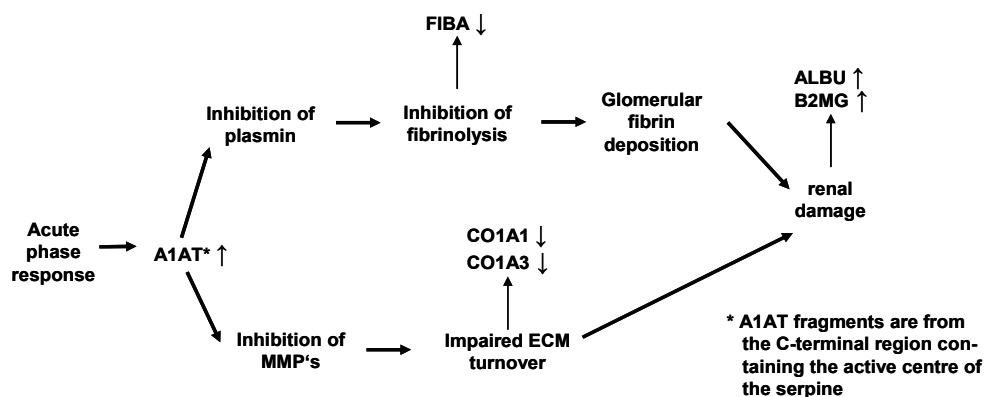


Fig. 3. Pathophysiological relevance of parent proteins from the peptides included in the AKI-specific proteomic biomarker model of Metzger et al., 2010 [53].

Abbreviations: A1AT, α 1-antitrypsin; ALBU, albumin; B2MG, β 2-microglobulin; CO1A1, collagen 1 α (I) chain; CO1A3, collagen 1 α (III) chain; ECM, extracellular matrix; FIBA, fibrinogen α chain; MMP, matrix metalloproteinases.

5. Conclusion

It is evident that an effective prevention or intervention strategy for patients particularly in the ICU (with the possible therapeutic options depicted in **figure 4**) relies on accurate and early detection of AKI. Considering the heterogeneity and complexity of AKI, a multiple marker approach seems to be more favourable over single markers. A multimarker approach will not rely on particular, single aspects of AKI, i.e. tubular damage, fibrosis, inflammation, necrosis or apoptosis, but combine the significant findings indicative of specific etiologies, ideally enabling detection of AKI independent of the underlying cause.

Irrespective of the approach, large, prospective, multicentre clinical trials on unselected patient populations are required to validate the different proposed biomarkers or classifiers. In analogy to a recent editorial by Vlahou [84], such a large study would best be performed in a way that allows testing all the biomarkers currently proposed. Unfortunately, neither industry, nor government agencies currently see the need for such a large trial.

Once suitable biomarkers and classifiers for accurate, early detection of AKI have been identified, it is essential to design an easy-to-apply analytical test based on these markers that is suitable for routine laboratory use ideally as a point of care device in intensive care units. One promising approach is the application of MALDI-MS as a robust and fast platform for efficient analysis of urinary biomarkers, which has been demonstrated feasible in CKD [39].

Common intervention	Therapeutic intervention
<ul style="list-style-type: none"> • Correct hypovolemia • Early goal directed therapy for sepsis and shock treatment • Avoid nephrotoxic antimicrobials • Avoid radio contrast 	<ul style="list-style-type: none"> • Administration of vasodilator agents • In shock states: noradrenalin as preferred vasoconstrictor • Volume substitution prior and post indicated radio contrast • Rather cristalloids than colloids. If hydroxyethyl starch, only limited amount, low rather than high-molecular weight one.

Fig. 4. Intervention aiming at AKI prevention.

6. Acknowledgement

This work was supported in part by grant G1000791/1 from the MRC to HM. VB was supported by grant GA 251368 (Protoclin) from the FP7-PEOPLE-2009-IAPP program. HM was supported in part by EU Funding through SysKID (HEALTH-F2-2009-241544).

7. References

- [1] Albalat A, Mischak H and Mullen W. Urinary proteomics in clinical applications: technologies, principal considerations and clinical implementation. *Prilozi*. 2011; 32(1): 13-44.
- [2] Ali T, Khan I, Simpson W et al. Incidence and outcomes in acute kidney injury: a comprehensive population-based study. *J Am Soc Nephrol*. 2007; 18: 1292-1298.
- [3] Aregger F, Pilop C, Uehlinger DE et al. Urinary proteomics before and after extracorporeal circulation in patients with and without acute kidney injury. *J Thorac Cardiovasc Surg*. 2010; 139(3): 692-700.
- [4] Bagshaw SM, George C, Bellomo R et al. Early acute kidney injury and sepsis: a multicentre evaluation. *Crit Care*. 2008; 12(2): R47.

- [5] Bagshaw SM, Uchino S, Bellomo R et al. Septic Acute Kidney Injury in Critically Ill Patients: Clinical Characteristics and Outcomes. *Clin J Am Soc Nephrol*. 2007; 2(3): 431-439.
- [6] Bellomo R, Ronco C, Kellum JA et al. Acute renal failure - definition, outcome measures, animal models, fluid therapy and information technology needs: the Second International Consensus Conference of the Acute Dialysis Quality Initiative (ADQI) Group. *Crit Care*. 2004; 8(4): R204-R212.
- [7] Bennett M, Dent CL, Ma Q et al. Urine NGAL predicts severity of acute kidney injury after cardiac surgery: a prospective study. *Clin J Am Soc Nephrol*. 2008; 3(3): 665-673.
- [8] Chawla LS, Amdur RL, Amodeo S et al. The severity of acute kidney injury predicts progression to chronic kidney disease. *Kidney Int*. 2011; 79(12): 1361-1369.
- [9] Chawla LS and Kellum JA. Biomarkers are transforming our understanding of AKI. *Nat Rev*. 2012; 8: 68-70.
- [10] Chertow GM, Burdick E, Honour M et al. Acute Kidney Injury, Mortality, Length of Stay, and Costs in Hospitalized Patients. *J Am Soc Nephrol*. 2005; 16(11): 3365-3370.
- [11] Chung MY, Jun DW and Sung SA. Diagnosis value of cystatin C for predicting acute kidney injury in patients with liver cirrhosis. *Korean J Hepatol*. 2010; 16(3): 301-307.
- [12] Constantin JM, Futier E, Perbet S et al. Plasma neutrophil gelatinase-associated lipocalin is an early marker of acute kidney injury in adult critically ill patients: A prospective study. *J Crit Care*. 2010;25(1):176.e1-6.
- [13] Cruz DN, de Cal M, Garzotto F et al. Plasma neutrophil gelatinase-associated lipocalin is an early biomarker for acute kidney injury in an adult ICU population. *Intensive Care Med*. 2010; 36(3): 444-451.
- [14] Dasta JF, Kane-Gill SL, Durtschi AJ et al. Costs and outcomes of acute kidney injury (AKI) following cardiac surgery. *Nephrol Dial Transpl*. 2008; 23(6): 1970-1974.
- [15] Devarajan P, Krawczeski CD, Nguyen MT et al. Proteomic identification of early biomarkers of acute kidney injury after cardiac surgery in children. *Am J Kidney Dis*. 2010; 56(4): 632-642.
- [16] Doi K, Negishi K, Katagiri D et al. Evaluation of new acute kidney injury biomarkers in a mixed intensive care unit. *Crit Care Med*. 2011; 39(11): 2646-2649.
- [17] Endre ZH, Pickering JW, Walker RJ et al. Improved performance of urinary biomarkers of acute kidney injury in the critically ill by stratification for injury duration and baseline renal function. *Kidney Int*. 2011; 79: 1119-1130.
- [18] Ferguson MA and Waikar SS. Established and emerging markers of kidney function. *J Crit Care*. 2010;25(1):176.e1-6.
- [19] Frantzi M, Bitsika V, Charonis A et al. Proteomics approaches in the quest of kidney disease biomarkers. *Prilozi*. 2011; 32(2): 33-51.
- [20] Goldstein SL and Devarajan P. Progression from acute kidney injury to chronic kidney disease: a pediatric perspective. *Adv Chronic Kidney Dis*. 2008; 15: 278-283.
- [21] Haase M, Bellomo R, Devarajan P et al. Accuracy of neutrophil gelatinase-associated lipocalin (NGAL) in diagnosis and prognosis in acute kidney injury: a systematic review and meta-analysis. *Am J Kidney Dis*. 2009; 54: 1012-1024.
- [22] Haase M, Bellomo R, Devarajan P et al. Novel Biomarkers Early Predict the Severity of Acute Kidney Injury After Cardiac Surgery in Adults. *Ann Thorac Surg*. 2009; 88(1): 124-130.

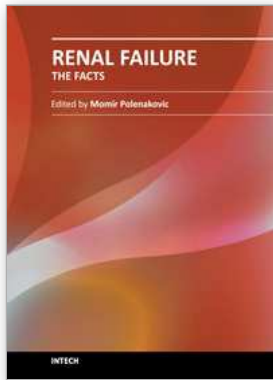
- [23] Haase-Fielitz A, Bellomo R, Devarajan P et al. Novel and conventional serum biomarkers predicting acute kidney injury in adult cardiac surgery—a prospective cohort study. *Crit Care Med.* 2009; 37(2): 553-560.
- [24] Han WK, Wagener G, Zhu Y et al. Urinary biomarkers in the early detection of acute kidney injury after cardiac surgery. *Clin J Am Soc Nephrol.* 2009; 4: 873-882.
- [25] Han WK, Bailly V, Abichandani R et al. Kidney Injury Molecule-1 (KIM-1): A novel biomarker for human renal proximal tubule injury. *Kidney Int.* 2002; 62(1): 237-244.
- [26] He Z, Lu L, Altmann C et al. Interleukin-18 binding protein transgenic mice are protected against ischemic acute kidney injury. *Am J Physiol - Ren Physiol.* 2008; 295(5): F1414-F1421.
- [27] Herget-Rosenthal S, Marggraf G, Husing J et al. Early detection of acute renal failure by serum cystatin C. *Kidney Int.* 2004; 66: 1115-1122.
- [28] Ho J, Lucy M, Krokhin O et al. Mass spectrometry-based proteomic analysis of urine in acute kidney injury following cardiopulmonary bypass: a nested case-control study. *Am J Kidney Dis.* 2009; 53: 584-595.
- [29] Hou SH, Bushinsky DA, Wish JB et al. Hospital-acquired renal insufficiency: A prospective study. *Am J Med.* 1983; 74(2): 243-248.
- [30] Ichimura T, Asseldonk EJ, Humphreys BD et al. Kidney injury molecule-1 is a phosphatidylserine receptor that confers a phagocytic phenotype on epithelial cells. *J Clin Invest.* 2008; 118(5): 1657-1668.
- [31] Ichimura T, Bonventre JV, Bailly V et al. Kidney Injury Molecule-1 (KIM-1), a Putative Epithelial Cell Adhesion Molecule Containing a Novel Immunoglobulin Domain, Is Up-regulated in Renal Cells after Injury. *J Biol Chem.* 1998; 273(7): 4135-4142.
- [32] Ishani A, Xue JL, Himmelfarb J et al. Acute kidney injury increases risk of ESRD among elderly. *J Am Soc Nephrol.* 2009; 20: 223-228.
- [33] Katagiri D, Doi K, Honda K et al. Combination of Two Urinary Biomarkers Predicts Acute Kidney Injury After Adult Cardiac Surgery. *Ann Thorac Surg.* 2012; 93(2): 577-583.
- [34] Kohli HS, Bhat A, Jairam A et al. Predictors of Mortality in Acute Renal Failure in a Developing Country: A Prospective Study. *Ren Fail.* 2007; 29(4): 463-469.
- [35] Koyner JL, Bennett MR, Worcester EM et al. Urinary cystatin C as an early biomarker of acute kidney injury following adult cardiothoracic surgery. *Kidney Int.* 2008; 74: 1059-1069.
- [36] Koyner JL, Vaidya VS, Bennett MR et al. Urinary biomarkers in the clinical prognosis and early detection of acute kidney injury. *Clin J Am Soc Nephrol.* 2010; 5(12): 2154-2165.
- [37] Krawczeski CD, Vandevoorde RG, Kathman T et al. Serum cystatin C is an early predictive biomarker of acute kidney injury after pediatric cardiopulmonary bypass. *Clin J Am Soc Nephrol.* 2010; 5(9): 1552-1557.
- [38] Lameire NH, Vanholder RC and Van Biesen WA. How to use biomarkers efficiently in acute kidney injury. *Kidney Int.* 2011; 79(10): 1047-1050.
- [39] Lapolla A, Molin L, Sechi A et al. A further investigation on a MALDI-based method for evaluation of markers of renal damage. *J Mass Spectrom.* 2009; 44(12): 1754-1760.
- [40] Laterza OF, Price CP and Scott MG. Cystatin C: an improved estimator of glomerular filtration rate? *Clin Chem.* 2002; 48: 699-707.

- [41] Levey AS, Bosch JP, Lewis JB et al. A more accurate method to estimate glomerular filtration rate from serum creatinine: a new prediction equation. Modification of Diet in Renal Disease Study Group. *Ann Intern Med.* 1999; 130: 461-470.
- [42] Liangos O, Tighiouart H, Perianayagam MC et al. Comparative analysis of urinary biomarkers for early detection of acute kidney injury following cardiopulmonary bypass. *Biomarkers.* 2009; 14: 423-431.
- [43] Liangos O, Kolyada A, Tighiouart H et al. Interleukin-8 and acute kidney injury following cardiopulmonary bypass: a prospective cohort study. *Nephron Clin Pract.* 2009; 113: c148-c154.
- [44] Liangos O, Perianayagam MC, Vaidya VS et al. Urinary N-Acetyl- β -D-Glucosaminidase Activity and Kidney Injury Molecule-1 Level Are Associated with Adverse Outcomes in Acute Renal Failure. *J Am Soc Nephrol.* 2007; 18(3): 904-912.
- [45] Loef BG, Epema AH, Smilde TD et al. Immediate Postoperative Renal Function Deterioration in Cardiac Surgical Patients Predicts In-Hospital Mortality and Long-Term Survival. *J Am Soc Nephrol.* 2005; 16(1): 195-200.
- [46] Maddens B, Ghesquiere B, Vanholder R et al. Chitinase-like proteins are candidate biomarkers for sepsis-induced acute kidney injury. *Mol Cell Proteomics.* 2012; Epub ahead of print.
- [47] Makris K, Markou N, Evodia E et al. Urinary neutrophil gelatinase-associated lipocalin (NGAL) as an early marker of acute kidney injury in critically ill multiple trauma patients. *Clin Chem Lab Med.* 2009; 47: 79-82.
- [48] Mannucci PM. Hemostatic drugs. *N Engl J Med.* 1998; 339(4): 245-253.
- [49] Matsui K, Kamijo-Ikemori A, Sugaya T et al. Usefulness of Urinary Biomarkers in Early Detection of Acute Kidney Injury After Cardiac Surgery in Adults. *Circ J.* 2012; 76(1): 213-220.
- [50] McIlroy DR, Wagener G and Lee HT. Neutrophil gelatinase-associated lipocalin and acute kidney injury after cardiac surgery: the effect of baseline renal function on diagnostic performance. *Clin J Am Soc Nephrol.* 2010; 5: 211-219.
- [51] Mehta RL, Kellum JA, Shah SV et al. Acute Kidney Injury Network: report of an initiative to improve outcomes in acute kidney injury. *Crit Care.* 2007;11(2):R13.
- [52] Melnikov VY, Faubel S, Siegmund B et al. Neutrophil-independent mechanisms of caspase-1- and IL-18-mediated ischemic acute tubular necrosis in mice. *J Clin Invest.* 2002; 110(8): 1083-1091.
- [53] Metzger J, Kirsch T, Schiffer E et al. Urinary excretion of twenty peptides forms an early and accurate diagnostic pattern of acute kidney injury. *Kidney Int.* 2010; 78: 1252-1262.
- [54] Metzger J, Lippa PB, Good DM et al. Adapting mass spectrometry-based platforms for clinical proteomics applications: The capillary electrophoresis coupled mass spectrometry paradigm. *Crit Rev Clin Lab Sci.* 2009; 46(3): 129-152.
- [55] Mishra J, Dent C, and Tarabishi R. Neutrophil gelatinase-associated lipocalin (NGAL) as a biomarker for acute renal injury after cardiac surgery. *Lancet.* 2005; 365: 1231-1238.
- [56] Mishra J, Ma K, Kelly C et al. Kidney NGAL is a novel early marker of acute injury following transplantation. *Pediatr Nephrol.* 2006; 21: 856-863.
- [57] Moore E, Bellomo R and Nichol A. Biomarkers of acute kidney injury in anesthesia, intensive care and major surgery: from the bench to clinical practice. *Minerva Anesthesiol.* 2010; 76(6): 425-440.

- [58] Nejat M, Pickering JW, Walker RJ et al. Rapid detection of acute kidney injury by plasma cystatin C in the intensive care unit. *Nephrol Dial Transplant*. 2010;25(10):3283-3289.
- [59] Nguyen MT, Ross GF, Dent CL et al. Early prediction of acute renal injury using urinary proteomics. *Am J Nephrol*. 2005; 25: 318-326.
- [60] Nguyen MT, Dent CL, Ross GF et al. Urinary aprotinin as a predictor of acute kidney injury after cardiac surgery in children receiving aprotinin therapy. *Pediatr Nephrol*. 2008; 23(8): 1317-1326.
- [61] Parikh CR, Abraham E, Ancukiewicz M et al. Urine IL-18 is an early diagnostic marker for acute kidney injury and predicts mortality in the intensive care unit. *J Am Soc Nephrol*. 2005; 16: 3046-3052.
- [62] Parikh CR, Mishra J, Thiessen-Philbrook H et al. Urinary IL-18 is an early predictive biomarker of acute kidney injury after cardiac surgery. *Kidney Int*. 2006; 70(1): 199-203.
- [63] Portilla D, Dent C, Sugaya T et al. Liver fatty acid-binding protein as a biomarker of acute kidney injury after cardiac surgery. *Kidney Int*. 2007; 73(4): 465-472.
- [64] Prozialeck WC, Edwards JR, Lamar PC et al. Expression of kidney injury molecule-1 (Kim-1) in relation to necrosis and apoptosis during the early stages of Cd-induced proximal tubule injury. *Toxicol Appl Pharmacol*. 2009; 238(3): 306-314.
- [65] Royakkers AANM, van Sujilen JDE, Hofstra LS et al. Serum cystatin C-A useful endogenous marker of renal function in intensive care unit patients at risk for or with acute renal failure? *Curr Med Chem*. 2007; 14: 2314-2317.
- [66] Royakkers A, Korevaar J, van Suijlen J et al. Serum and urine cystatin- α C are poor biomarkers for acute kidney injury and renal replacement therapy. *Intensive Care Med*. 2011; 37(3): 493-501.
- [67] Schaub S, Wilkins J, Weiler T et al. Urine protein profiling with surface-enhanced laser-desorption/ionization time-of-flight mass spectrometry. *Kidney Int*. 2004; 65(1): 323-332.
- [68] Shemin D and Dworkin LD. Neutrophil gelatinase-associated lipocalin (NGAL) as a biomarker for early acute kidney injury. *Crit Care Clin*. 2011; 27: 379-389.
- [69] Shusterman N, Strom BL, Murray TG et al. Risk factors and outcome of hospital-acquired acute renal failure: Clinical Epidemiologic Study. *Am J Med*. 1987; 83(1): 65-71.
- [70] Siew ED, Ware LB, Gebretsadik T et al. Urine neutrophil gelatinase-associated lipocalin moderately predicts acute kidney injury in critically ill adults. *J Am Soc Nephrol*. 2009; 20: 1823-1832.
- [71] Siew ED, Ikizler TA, Gebretsadik T et al. Elevated Urinary IL-18 Levels at the Time of ICU Admission Predict Adverse Clinical Outcomes. *Clin J Am Soc Nephrol*. 2010; 5(8): 1497-1505.
- [72] Singbartl K and Kellum JA. AKI in the ICU: definition, epidemiology, risk stratification, and outcomes. *Kidney Int*. 2011; Epub ahead of print.
- [73] Sirota JC, Klawitter J and Edelstein CL. Biomarkers of acute kidney injury. *J Toxicol*. 2011; 2011: 328120.
- [74] Soto K, Coelho S, Rodrigues B et al. Cystatin C as a marker of acute kidney injury in the emergency department. *Clin J Am Soc Nephrol*. 2010; 5(10): 1745-1754.
- [75] Star RA. Treatment of acute renal failure. *Kidney Int*. 1998; 54: 1817-1831.

- [76] Stevens LA, Lafayette RD, Perrone RD et al. Laboratory evaluation of kidney function. 2007; 8th Edition: 299-366.
- [77] Theodorescu D, Wittke S, Ross MM et al. Discovery and validation of new protein biomarkers for urothelial cancer: a prospective analysis. *Lancet Oncol.* 2006; 7(3): 230-240.
- [78] Trachtman H, Christen E, Cnaan A et al. Urinary neutrophil gelatinase-associated lipocalin (NGAL) in D+HUS: a novel marker of renal injury. *Pediatr Nephrol.* 2006; 21: 989-994.
- [79] Tuladhar SM, Puntmann VO, Soni M et al. Rapid detection of acute kidney injury by plasma and urinary neutrophil gelatinase-associated lipocalin after cardiopulmonary bypass. *J Cardiovasc Pharmacol.* 2009; 53: 261-266.
- [80] Uchino S, Kellum JA, Bellomo R et al. Acute renal failure in critically ill patients: a multinational, multicenter study. *JAMA.* 2005; 294: 813-818.
- [81] Urbschat A, Obermüller N and Haferkamp A. Biomarkers of kidney injury. *Biomarkers.* 2011; 16(S1): S22-S30.
- [82] van Timmeren MM, van den Heuvel MC, Bailly V et al. Tubular kidney injury molecule-1 (KIM-1) in human renal disease. *J Pathol.* 2007; 212(2): 209-217.
- [83] Vecchi C, Montosi G, Zhang K et al. ER stress controls iron metabolism through induction of hepcidin. *Science.* 2009; 325(5942): 877-880.
- [84] Vlahou A. Back to the future in bladder cancer research. *Expert Rev Proteomics.* 2011; 8(3): 295-297.
- [85] Wagener G, Gubitosa G, Wang S et al. Urinary neutrophil gelatinase-associated lipocalin and acute kidney injury after cardiac surgery. *Am J Kidney Dis.* 2008; 52: 425-433.
- [86] Wagener G, Minhaz M, Mattis FA et al. Urinary neutrophil gelatinase-associated lipocalin as a marker of acute kidney injury after orthotopic liver transplantation. *Nephrol Dial Transplant.* 2011; 26(5): 1717-1723.
- [87] Waikar SS, Liu KD and Chertow GM. Diagnosis, Epidemiology and Outcomes of Acute Kidney Injury. *Clin J Am Soc Nephrol.* 2008; 3(3): 844-861.
- [88] Wald R, Liangos O, Perianayagam MC et al. Plasma cystatin C and acute kidney injury after cardiopulmonary bypass. *Clin J Am Soc Nephrol.* 2010; 5(8): 1373-1379.
- [89] Washburn KK, Zappitelli M, Arikian AA et al. Urinary interleukin-18 is an acute kidney injury biomarker in critically ill children. *Nephrol Dial Transpl.* 2008; 23(2): 566-572.
- [90] Westenfelder C. Earlier diagnosis of acute kidney injury awaits effective therapy. *Kidney Int.* 2011; 79(11): 1159-1161.
- [91] Wheeler DS, Devarajan P, Ma Q et al. Serum neutrophil gelatinase-associated lipocalin (NGAL) as a marker of acute kidney injury in critically ill children with septic shock. *Crit Care Med.* 2008;36:1297-1303.
- [92] Wittke S, Fliser D, Haubitz M et al. Determination of peptides and proteins in human urine with capillary electrophoresis-mass spectrometry, a suitable tool for the establishment of new diagnostic markers. *J Chromatogr A.* 2003; 1013: 173-181.
- [93] Xin C, Yulong X, Yu C et al. Urine Neutrophil Gelatinase-Associated Lipocalin and Interleukin-18 Predict Acute Kidney Injury after Cardiac Surgery*. *Ren Fail.* 2008; 30(9): 904-913.
- [94] Xue JL, Daniels F, Star RA et al. Incidence and Mortality of Acute Renal Failure in Medicare Beneficiaries, 1992 to 2001. *J Am Soc Nephrol.* 2006; 17(4): 1135-1142.

- [95] Yilmaz A, Sevketoglu E, Gedikbasi A et al. Early prediction of urinary tract infection with urinary neutrophil gelatinase associated lipocalin. *Pediatr Nephrol.* 2009; 24: 2387-2392.
- [96] Ympa YP, Sakr Y, Reinhart K et al. Has mortality from acute renal failure decreased? A systematic review of the literature. *Am J Med.* 2005; 118(8): 827-832.
- [97] Zappitelli M, Washburn KK, Arikan AA et al. Urine neutrophil gelatinase-associated lipocalin is an early marker of acute kidney injury in critically ill children: a prospective cohort study. *Crit Care.* 2007; 11(4): R84.
- [98] Zhang PL, Rothblum LI, Han WK et al. Kidney injury molecule-1 expression in transplant biopsies is a sensitive measure of cell injury. *Kidney Int.* 2008; 73(5): 608-614.
- [99] Zhang Z, Humphreys BD and Bonventre JV. Shedding of the Urinary Biomarker Kidney Injury Molecule-1 (KIM-1) Is Regulated by MAP Kinases and Juxtamembrane Region. *J Am Soc Nephrol.* 2007; 18(10): 2704-2714.
- [100] Zhang Z, Lu B, Sheng X et al. Cystatin C in Prediction of Acute Kidney Injury: A Systemic Review and Meta-analysis. *Am J Kidney Dis.* 2011; 58(3): 356-365.



Renal Failure - The Facts

Edited by Dr. Momir Polenakovic

ISBN 978-953-51-0630-2

Hard cover, 270 pages

Publisher InTech

Published online 23, May, 2012

Published in print edition May, 2012

The book "Renal Failure - The Facts" consists of some facts about diagnosis, etiopathogenesis and treatment of acute and chronic renal failure. Acute, as well as chronic renal failure is great medical problems and their treatment is a burden for the budget of each government. The purpose of the chapters is to present some important issues of diagnosis and causes of AKI, as well as caused by snakes and arthropods, after cardiac surgery, as well as some therapeutic achievements in AKI. Well presented are the psychological condition in patients on haemodialysis, as well as the treatment of diabetic uremics. The book is aimed at clinicians with a special interest in nephrology, but it should also prove to be a valuable resource for any generalists who encounter a nephrological problems in their day-to-day practice.

How to reference

In order to correctly reference this scholarly work, feel free to copy and paste the following:

Stefan Herget-Rosenthal, Jochen Metzger, Amaya Albalat, Vasiliki Bitsika and Harald Mischak (2012). Proteomic Biomarkers for the Early Detection of Acute Kidney Injury, *Renal Failure - The Facts*, Dr. Momir Polenakovic (Ed.), ISBN: 978-953-51-0630-2, InTech, Available from: <http://www.intechopen.com/books/renal-failure-the-facts/proteomic-biomarkers-for-the-early-detection-of-acute-kidney-injury>

INTECH
open science | open minds

InTech Europe

University Campus STeP Ri
Slavka Krautzeka 83/A
51000 Rijeka, Croatia
Phone: +385 (51) 770 447
Fax: +385 (51) 686 166
www.intechopen.com

InTech China

Unit 405, Office Block, Hotel Equatorial Shanghai
No.65, Yan An Road (West), Shanghai, 200040, China
中国上海市延安西路65号上海国际贵都大饭店办公楼405单元
Phone: +86-21-62489820
Fax: +86-21-62489821

© 2012 The Author(s). Licensee IntechOpen. This is an open access article distributed under the terms of the [Creative Commons Attribution 3.0 License](#), which permits unrestricted use, distribution, and reproduction in any medium, provided the original work is properly cited.