

Reliability Evaluation of Manufacturing Systems: Methods and Applications

Alberto Regattieri

*DIEM - Department of Industrial and Mechanical Plants, University of Bologna
Italy*

1. Introduction

The measurement and optimization of the efficiency level of a manufacturing system, and in general of a complex systems, is a very critical challenge, due to technical difficulties and to the significant impact towards the economic performance.

Production costs, maintenance costs, spare parts management costs force companies to analyse in a systematic and effective manner the performance of their manufacturing systems in term of availability and reliability (Manzini et al. 2004, 2006, 2008).

The reliability analysis of the critical components is the basic way to establish first and to improve after the efficiency of complex systems.

A number of methods (i.e. Direct Method, Rank Method, Product Limit Estimator, Maximum likelihood Estimation, and others (Manzini et. Al., 2009) all with reference to RAMS (Reliability, Availability, Maintainability and Safety) analysis, have been developed, and can bring a significant contribution to the performance improvement of both industrial and non-industrial complex systems.

Literature includes a huge number of interesting methods, linked for example to preventive maintenance models; these models can determine the best frequency of maintenance actions, or the optimization of spare parts consumption or the best management of their operating costs (Regattieri et al., 2005, Manzini et al., 2009).

Several studies (Ascher et al.1984, Battini et al., 2009, Louit et al., 2007, Persona et al. 2007) state that often these complex methodologies are applied using false assumptions such as constant failure rates, statistical independence among components, renewal processes and others. This common approach results in poor evaluations of the real reliability performance of components. All subsequent analysis may be compromised by an incorrect initial assessment relating to the failure process. A correct definition of the model describing the failure mode is a very critical issue and requires efforts which are often not sufficiently focused on.

In this chapter the author discusses the model selection failure process, from the fundamental initial data collection phase to the consistent methodologies used to estimate the reliability of components, also considering censored data.

This chapter introduces the basic analytical models and the statistical methods used to analyze the reliability of systems that constitute the basis for evaluation and prediction of

the stochastic failure and repair behavior of complex manufacturing systems, assembled using a variety of components. Consequently, the first part of the chapter presents a general framework for components which describes the procedure for the solution of the complete Failure Process Modeling (FPM) problem, from data collection to final failure modeling, that, in particular, develops the fitting analysis in the renewal process and the contribution of censored data throughout the whole process. The chapter discusses the main methods provided in the proposed framework.

Applications, strictly derived from industrial case studies, are presented to show the capability and the usefulness of the framework and methods proposed.

2. Failure Process Modeling (FPM) framework

A robust reliability analysis requires an effective failure process investigation, normally based on non-trivial knowledge about the past performance of components or systems, in particular in terms of failure times. This data collection is a fundamental step. The introduction of a Computer Maintenance Management System - CMMS and of a Maintenance Remote Control System (Persona et al., 2007) can play an important role. Ferrari et al. (2003) demonstrate the risk due to a small data set or due to hasty hypothesis often considered (e.g. constant failure rate, independent identically distributed failure times, etc.).

Literature suggests different frameworks for the investigation of the failure process modeling of components and complex systems, generally focused on a particular feature of problem (e.g. trend tests in failure data, renewal or not renewal approach, etc.).

In this chapter a general framework is proposed considering all the FPM process from data collection to final failure modelling, also considering the contribution of censored data.

Figure 1 presents the proposed framework (Regattieri et al., 2010). Data collection is the first step of the procedure. This is a very important issue, since the robustness of analysis is strictly related to the collected data set. Both failure times and *censored* times are gathered. Times to failure are used for the failure process characterization and censored times finally enrich the data set used for the definition of the parameters of failure models, thus resulting in a more robust modeling.

In general, considering a population of components composed by m units, each specific failure (or inter-failure) time can be found. The result is represented by a set of times called $X_{i,j}$, where i^{th} represents the time of failure of the j^{th} unit: there is a complete data situation in this case, that is, all m unit failure times are available.

Unfortunately, frequently this is not a real situation, because a lot of time and information would be required. The real world test often ends before all units have failed, or several units have finished their work before data monitoring, so their real working times is unknown. These conditions are usually known as *censored data situations*.

Technically, censoring may be further categorized into:

1. Individual censored data
All units have the same test time t^* . A unit has either failed before t^* or is still running (generating censored data);
2. Multiple censored data

Test times vary from unit to unit. Clearly, failure times differ but there are also different censoring times. Censored units are removed from the sample at different times, while units go into service at different times.

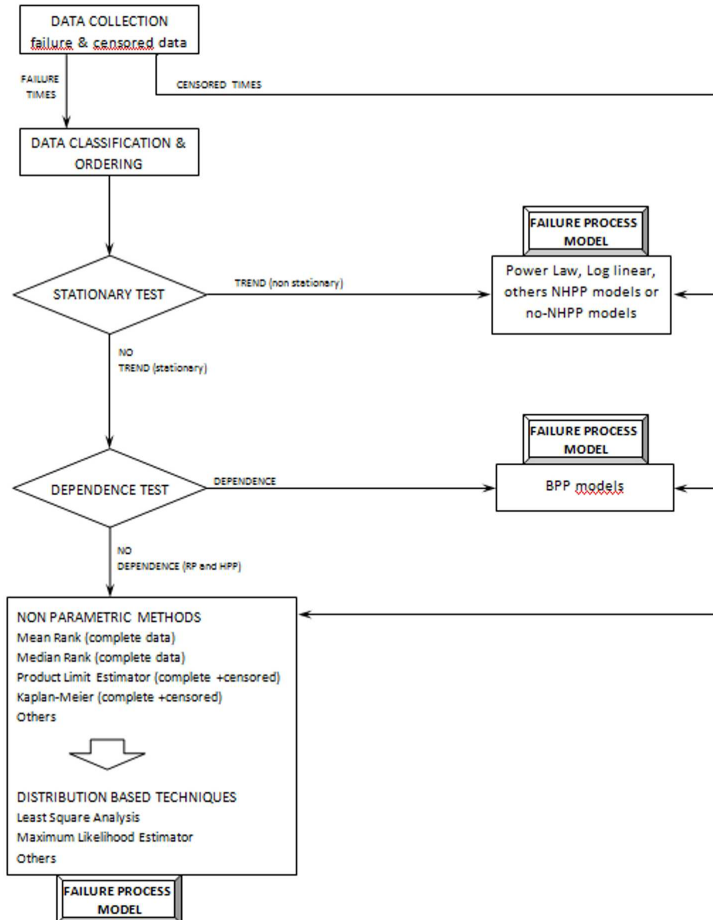


Fig. 1. Generalized framework for Failure Process Modeling (FPM)

In reference to Figure 1, let $X_{1,j} < X_{2,j} < \dots < X_{i,j} < \dots < X_{n,j}$ be the ordered set of failure or inter-failure times of item j ; censored times (denoted X_{ij+}) are temporarily removed from the data set. The trend test applied to ordered failure times (graphical trend test, Mann test, etc.) determines if the process is stationary or not.

If the process presents a trend, the $X_{i,j}$ are not identically distributed and a non-stationary model must be fitted. The NHPP model is the most used form due to its simplicity and according to significant experimental evidence available (Coetzee, 1997). At this time the censored data must be reconsidered in the model. Their impact is discussed by Jiang et al. (2005).

If the failure process is trend free, the next step is to identify if inter-failure times are independent. There are a lot of tests for independence, but this check is usually skipped by practitioners, as stated by Ascher and Feingold, because of a lack of understanding of the relevance of this type of test. An effective way of testing the dependence is the serial correlation analysis discussed by Cox and Lewis (1966). Dependence between data involves a Branching Poisson Processes (BPP), which is also analyzed by Cox and Lewis (1966). Censored data also play an important role in the BPP model and must be considered during final modelling.

In real applications the failure process is frequently stationary and the failure data are independent: then a renewal process is involved. In spite of this, the proposed framework pays attention to the evaluation of reliability functions, in particular in presence of censored data.

More precisely, non parametric methods and distribution based techniques are suggested to find the reliability functions such as survival functions, hazard functions, etc. considering censored data.

The Product Limit Estimator method and Kaplan-Meier method for the first category and Least Square Analysis and Maximum Likelihood Estimator technique for the second category are robust and consistent approaches.

Regattieri et al. (2010), Manzini et al. (2009) and Ebeling (2005) discuss in details each method referred in the presented framework.

3. Applications

The proposed framework has been applied in several case studies. In this chapter, two applications are presented, in order to discuss methods, advantages and problems.

The first application deals with an important international manufacturer of oleo-dynamic valves. Using a reliability data set collected during the life of the manufacturing system, the effect of considering or not the censored data is discussed.

The second application involves the application of the complete framework in a light commercial vehicle manufacturing system. In particular, the estimation of the failure time distribution is discussed.

3.1 Application 1: The significant effect of censored data

During the production, the Company collects times to failure using the CMMS system. In particular, the performance of component *r.090.1768* is analysed; this is a very important electric motor: it is responsible of the movement of the transfer system of the valves assembly line. Figure 2 shows a sketch of the component.

The failure process can be considered as a Renewal Process; stationary test and dependence test are omitted for the sake of simplicity (for details see application 2).

Using non parametric methods, in particular the Kaplan Meyer method (Manzini et al. 2009, Ebeling, 2005) it is possible to evaluate the empirical form of reliability function (called $R(t_i)$).

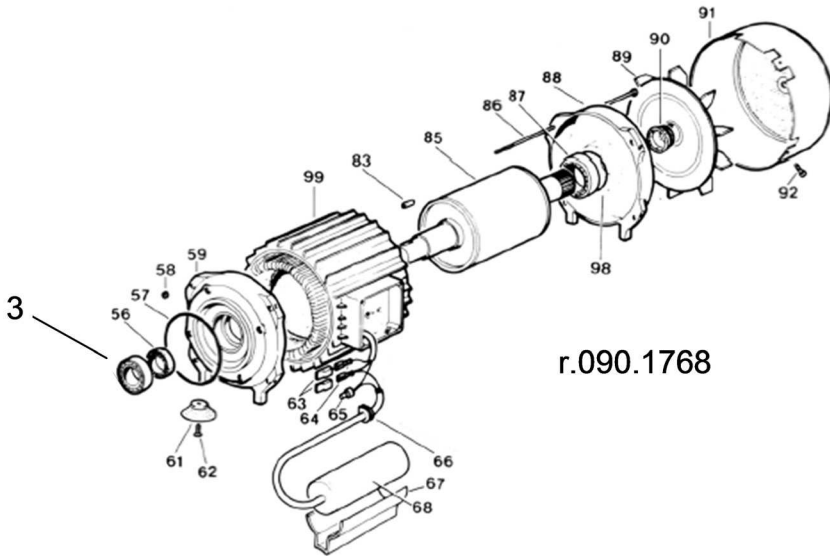


Fig. 2. Component r.090.1768

Table 1 presents all the available data, in terms of times to failures (t_i) and censored times (t_i+)

time to failure (h)	time to failure (h)	time to failure (h)
1124	667	2128
2785	700+	2500+
1642	2756	3467
800+	2489	2687
1974	1500+	1000+
2461	1945	1745
1300+	1478	1000+
2894	1500+	1348
3097	1246	2497
2674	2056	2500+

Table 1. r.090.1768 data set

Assuming t_i as the ranked failure times and n_i to be the number of components at risk, prior to the i th failure, the estimated reliability is calculated by:

$$\hat{R}(t_i) = \left(1 - \frac{1}{n_i}\right)^{\delta_i} \hat{R}(t_{i-1}) \tag{1}$$

where

$\delta_i = (1,0)$ (if failure occurs at time t_i , if censoring occurs at time t_i);

$$\hat{R}(0) = 1$$

The results of reliability analysis are summarized in Table 2 and Figure 3.

i	T _i	n _i	(1-1/n _i)	δ _i	R(t _i)	
	0				1,000	
1	667	30	0.967	1	R(667) = 0.967 R(0) = 0.967	
2	700	+	29	0.966	0	
3	800	+	28	0.964	0	
4	1000	+	27	0.963	0	
5	1000	+	26	0.962	0	
6	1124		25	0.960	1	R(1124) = 0.960 R(667) = 0.928
7	1246		24	0.958	1	R(1246) = 0.958 R(1124) = 0.889
8	1300	+	23	0.957	0	
9	1348		22	0.955	1	0.849
10	1478		21	0.952	1	0.808
11	1500	+	20	0.950	0	
12	1500	+	19	0.947	0	
13	1642		18	0.944	1	0.764
14	1745		17	0.941	1	0.719
15	1945		16	0.938	1	0.674
16	1974		15	0.933	1	0.629
17	2056		14	0.929	1	0.584
18	2128		13	0.923	1	0.539
19	2461		12	0.917	1	0.494
20	2489		11	0.909	1	0.449
21	2497		10	0.900	1	0.404
22	2500	+	9	0.889	0	
23	2500	+	8	0.875	0	
24	2674		7	0.857	1	0.346
25	2687		6	0.833	1	0.289
26	2756		5	0.800	1	0.231
27	2785		4	0.750	1	0.173
28	2894		3	0.667	1	0.115
29	3097		2	0.500	1	0.058
30	3467		1	0.000	1	0.000

Table 2. Reliability evaluation using the Kaplan-Meier method (component r.090.1768)

Experimental evidences show that Companies often neglect censored data considering only the times to failure (i.e. the so called *complete* data set).

The use of the complete data set when several components are still working (i.e. there are censored data) introduces significant errors. Considering the component r.090.1768, Figure 4 shows a comparison between the Reliability functions obtained by Kaplan Meyer method

applied to the set with censored data, and Improved Direct Method (Manzini et al., 2009) applied only to the failure times (complete data set).

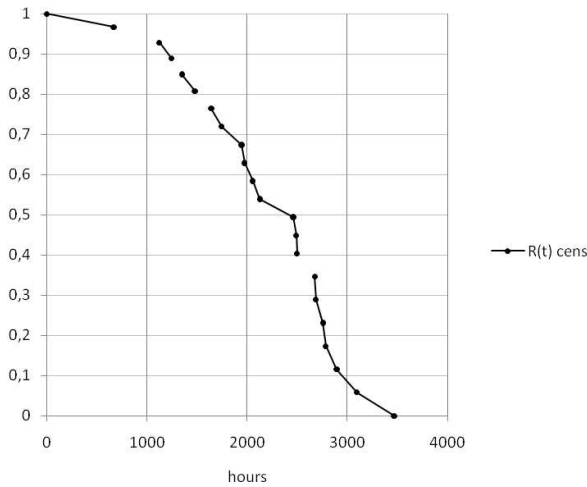


Fig. 3. Reliability Plot using Kaplan Meyer method (component r.090.1768)

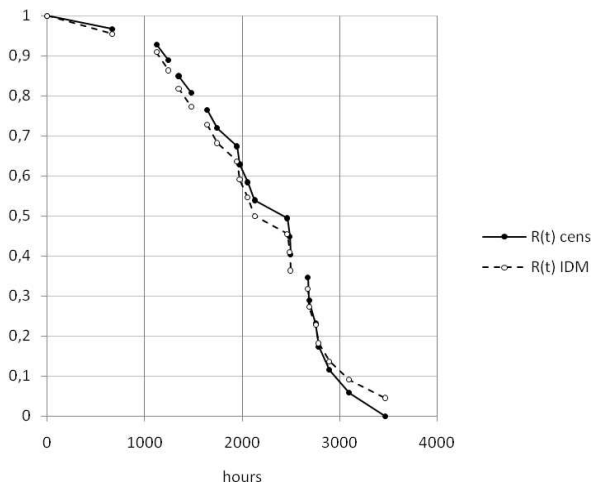


Fig. 4. Comparison of complete (using IDM) and censored data (using Kaplan Meyer)

The error is generally an under estimation of reliability. It depends on the percentage of units not considered and on the censoring times.

Anyway, if censored times are not considered, a significant error is introduced.

3.2 Application 2: A complete failure process modeling

In this application the FPM process has been applied to carry out the reliability analysis of several components of a light commercial vehicles manufacturer production system. The

plant is composed by a lot of subsystems; for each of them a set of critical components is considered. Each component has a preferable failure mode (wear, mechanical crash, thermal crash, etc.); from now on, the generic expression *failure* is used considering the particular and prominent failure mode for each component.

Table 3 shows the subset of critical components, called S1, analyzed in the Chapter.

No.	Component	Code	Subsystem
1	tow equipment	KKL5699	welding robot wr1
2	brake shoes	BF4-45	welding robot wr1
3	primary hinge	IHF7598	input gate
4	penstock	KK1243	body feeder
5	skillet ball bearing	A9097	skillet

Table 3. Critical components and subsystems

Among them, the main welding robot named wr1 is very critical, and in particular its components named KKL5699, which are the main actuators, are considered to be mainly responsible for the poor reliability performance of the entire manufacturing system. For this reason, the Chapter presents the application of the proposed framework to the component KKL5699. Finally, the conclusions take into account all the critical components shown in Table 1.

3.2.1 Analysis of KKL5699 component

The tow system is composed by 9 identical repairable components KKL5699, working in 9 different positions, named with letters A,B,..., L, under the same operating conditions. For this reason, they are pooled in a single enhanced data set. The working time is 24 hours/day, 222 days/year.

The CMMS has collected failure data from initial installation ($T_0 = 0$). Table 4 reports the interfailure time X_{ij} (failure i of item j) and the cumulative failure times F_{ij} as shown in Figure 5.

The data are collected during 5 years of operating time, but FPM must be an iterative procedure applied at different instants of system service. The growth of the data set allows a more robust investigation of the failure process. In particular, the paper involves the results of analysis developed at the end of different time intervals $[T_0, t]$: 1,440, 3,696, 4,824, 6,720, 8,448, 11,472, 13,440, 15,560, 18,816 and 23,688 hours. For the generic time t , the analysis uses all the failure times collected, but also the existing censored times according to the components in service. For each instant of analysis, 9 suspended times are collected due to the working times from the last repair action of components and the time analysis. Table 5 reports the data set of failure times, the censored times and the relative working position available at the instant of analysis 3,956 hours.

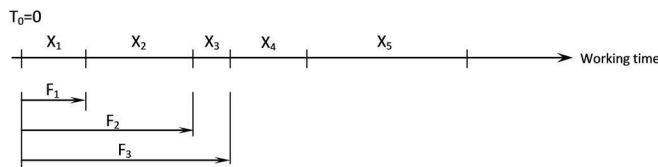


Fig. 5. Inter-failure time X_{ij} and cumulative failure times F_{ij}

Obviously, when the instant of analysis increases, the number of failure times increases too. Whereas the censored times are constantly 9, then the *Censoring Rate - CR*, given by (1), decreases:

$$CR = \frac{Nc(t)}{Ntot(t)} \tag{2}$$

where $Nc(t)$ is the number of censored times available at time analysis t , and $Ntot(t)$ is the number of times (failure and censored) available at time analysis t .

The different Censoring Rates involved in the analysis are presented in Table 6.

i	$X_{iA}(h)$	$F_{iA}(h)$	$X_{iB}(h)$	$F_{iB}(h)$	$X_{iC}(h)$	$F_{iC}(h)$	$X_{iD}(h)$	$F_{iD}(h)$	$X_{iE}(h)$	$F_{iE}(h)$
1	829	829	1.658	1.658	673	673	2.134	2.134	2.724	2.724
2	1.132	1.961	4.536	6.194	983	1.656	1.864	3.998	1.672	4.396
3	2.354	4.315	2.353	8.547	1.567	3.223	3.276	7.274	1.945	6.341
4	1.856	6.171	899	9.446	2.349	5.572	1.745	9.019	2.218	8.559
5	1.957	8.128	1.654	11.100	3.314	8.886	1.794	10.813	1.634	10.193
6	3.420	11.548	1.673	12.773	1.786	10.672	2.398	13.211	2.835	13.028
7	7.264	18.812	2.364	15.137	1.745	12.417	1.128	14.339	1.674	14.702
8	2.573	21.385	1.879	17.016	2.234	14.651	1.523	15.862	1.893	16.595
9	1.111	22.496	2.657	19.673	987	15.638	1.759	17.621	2.673	19.268
10					1.756	17.394	3.298	20.919	1.278	20.546
11					2.567	19.961	1.245	22.164		
12					2.163	22.124				

i	$X_{iF}(h)$	$F_{iF}(h)$	$X_{iG}(h)$	$F_{iG}(h)$	$X_{iH}(h)$	$F_{iH}(h)$	$X_{iL}(h)$	$F_{iL}(h)$
1	2.143	2.143	1.980	1.980	3.278	3.278	2.173	2.173
2	1.783	3.926	2.637	4.617	2.167	5.445	2.184	4.357
3	2.784	6.710	1.857	6.474	2.783	8.228	1.476	5.833
4	2.647	9.357	1.643	8.117	1.924	10.152	1.284	7.117
5	1.673	11.030	2.195	10.312	2.735	12.887	749	7.866
6	985	12.015	785	11.097	2.196	15.083	4.583	12.449
7	1.643	13.658	1.903	13.000	2.457	17.540	2.748	15.197
8	1.849	15.507	2.749	15.749	1.932	19.472	2.476	17.673
9	2.649	18.156	2.374	18.123	1.384	20.856	2.945	20.618
10	3.916	22.072	2.734	20.857	1.836	22.692	1.932	22.550
11	673	22.745	1.925	22.782				

Table 4. Inter-failure and failure time data set (KKL5699)

According to the proposed framework, the first test deals with the stationary condition. Figure 6, referring to all the pooled data set, presents the *cumulative failures vs time plot* graphs. No trend can be appreciated in the failure data. The Mann test, counting the number of reverse arrangements, confirms this belief, both for each component and for the pooled data set. The Laplace trend test leads to the same conclusions, in particular its test statistic is $u_L=0.55$ according to a p-value $p=0.580$. Comparing u_L^2 with the χ^2 distribution with 1 degree of freedom, there is no evidence of a trend with a significance level of 5% (Ansell and Philips, 1994).

interfailure times X_{ij} (h)	position	censored times X_{ij}^+ (h)	position
829	A	1.735	A
1.132	A	2.038	B
1.658	B	473	C
673	C	1.562	D
983	C	972	E
1.567	C	1.553	F
2.134	D	1.716	G
2.724	E	418	H
2.143	F	1.523	L
1.980	G		
3.278	H		
2.173	L		

Table 5. Data set at 3.956 working hours (inter-failure times and censored times) component KKL5699

Instant of analysis (hs)	1440	2410	3696	4824	6720	8448	11472	13440	16560	18816	23688
N. of interfailure times X_{ij}	2	9	12	18	26	32	46	55	66	75	93
N. of censored times X_{ij}^+	9	9	9	9	9	9	9	9	9	9	9
Censoring rate - CR	0,818	0,500	0,429	0,333	0,257	0,220	0,164	0,141	0,120	0,107	0,088

Table 6. Censoring rates (KKL5699)

A first assessment shows that the component failure process is stationary. The next step deals with the renewal process hypothesis evaluation.

The *serial correlation analysis* is used to reveal the independence of the analyzed data set. According to the *autocorrelation plot*, in Figure 7, we cannot reject the null hypothesis of no autocorrelation for any length of lag (5% is the significance level adopted).

The Durbin-Watson statistic confirms this belief, then the component failure process for component KKL5699 can be considered to be a renewal process (RP).

Considering the RP assumption, *non parametric methods* or *distribution based techniques* are available to define the failure process model.

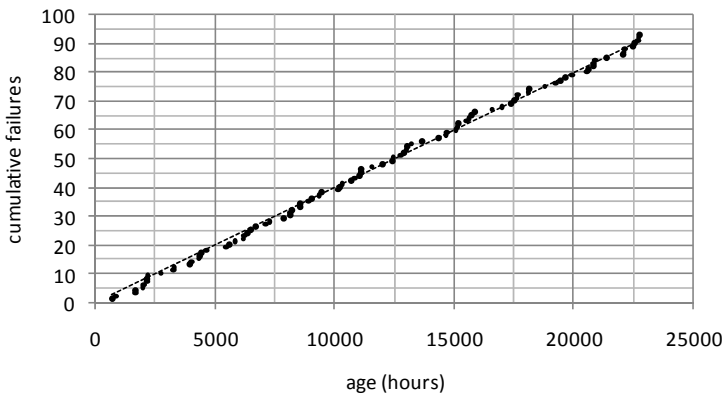


Fig. 6. Cumulative failures vs time plot (pooled data set KKL5699)

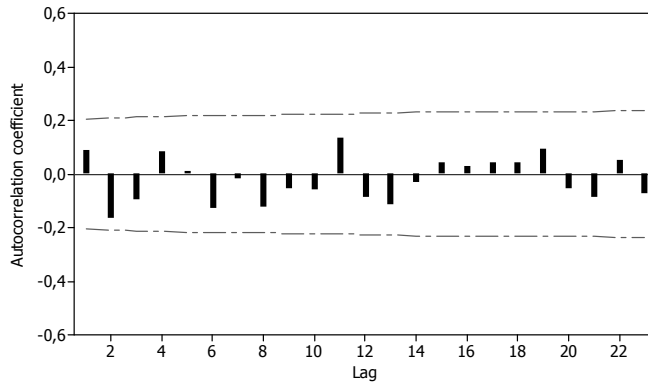


Fig. 7. Correlogram for pooled X_{ij} with 5% significance level (KKL 5699)

It is important to take into consideration the role of censored data: as demonstrated in the previous application 1, their use enhances the data set and then increases the confidence of the model.

According to the censored data consideration, data are previously analyzed by the *Product Limit Estimator* method (Manzini et al. 2009, Ebeling, 2005), and then the best reliability distributions (i.e. survival function, hazard rate, etc.) are fitted by the *Least square analysis* method. This approach is applied for each time interval of the system service time (i.e. instant of analysis).

From now on, we will only consider the pooled data set; for this reason, the time notation X_{ij} collapses into X_z . The value of survival function - $R(X_z)$, after a working time equal to X_z using the Product Limit Estimator method, is given by:

$$R(X_z) = \left(\frac{n+1-z}{n+2-z} \right)^{\delta_z} R(X_{z-1}) \tag{3}$$

where

$\delta_z = (1;0)$ (if failure occurs at time X_z ; if censoring occurs at time X_z);

$R(0) = 1$;

n number of failure and censored events available

All the service times are investigated. Figure 8 shows the survival empirical curves for component KKL5699, obtained at different instants of analysis, sometimes very spaced out one from each other (e.g. several months apart).

The reliability evaluation after 1,440 hours (roughly 3 months of service) appears very approximate, while after 23,688 hours (more than 4 years of service) it is very confident. Considering the data set, the survival function evaluations change in a significant way (up to 25%) along the life of component; the data collection and the maintenance of data collected is thus a very important issue.

An alternative approach is to identify a proper statistical distribution for the principal reliability functions, such as the survival function, $R(t)$, the failure cumulative probability

function, $F(t)$, and the hazard function, $h(t)$, to evaluate its parameter(s), and perform a goodness-of fit test.

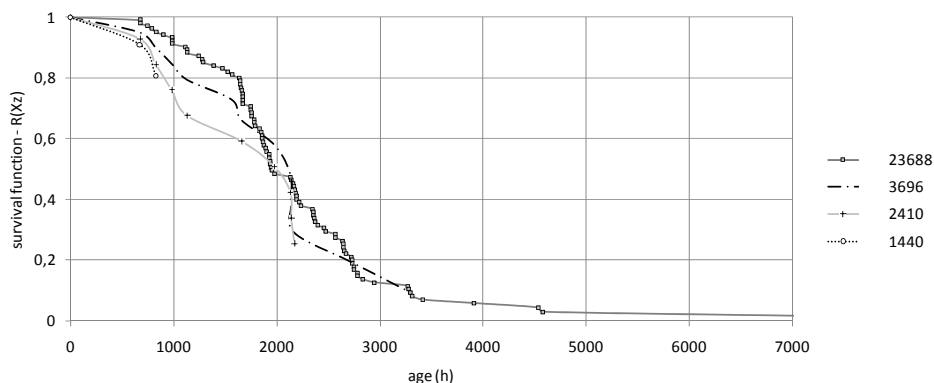


Fig. 8. Survival function at different service times (1,440, 2,410, 3,696, 23,688 hours) for component KKL5699

In general, this approach is very interesting because in recent years a significant number of techniques, based on the knowledge of the reliability distributions, have been developed, and then they can provide an important contribution to the performance improvement of both industrial and non-industrial complex systems. These techniques are often referred to as RAMS (*Reliability, Availability, Maintainability and Safety*) analysis.

For example, scientific literature includes a huge number of interesting methods, some being more complex than others, linked to preventive maintenance models; these models support the determination of the best intervention interval, or the optimization of the procedures, that determine spare parts consumption or the best management of their operating costs.

The *2-parameters Weibull* distribution is one of the most commonly used distributions in reliability engineering because of the many failure processes it attains for various values of parameters. It can therefore model a great variety of data and life characteristics. The distribution parameters can be estimated using several methods: the Least Square method (LS), the Maximum Likelihood Estimator (MLE) and others (Ebeling, 2005). In the KKL5699 component case, the Least Square method is preferred for its simplicity and robustness.

Table 7 summarizes the results in terms of Weibull parameters and index of fit, according to different instants of analysis.

Instant of analysis (hs)	1.440	2.410	3.696	4.824	6.720	8.448	11.472	13.440	16.560	18.816	23.688
shape factor β	1,790	2,133	2,489	2,730	2,814	2,749	2,849	2,888	2,989	2,914	2,900
scale factor η	3.160,420	2.087,720	2.268,320	2.251,380	2.378,990	2.393,510	2.311,830	2.335,510	2.335,140	2.400,010	2.427,910
index of fit	0,9451	0,9642	0,9857	0,9871	0,9822	0,985	0,9769	0,9793	0,9788	0,9647	0,9723
Censoring rate - CR	81,8	50,0	42,9	33,3	25,7	22,0	16,4	14,1	12,0	10,7	8,8

Table 7. Parameters of Weibull distribution at different instants of analysis (KKL5699)

The parameters of Weibull distribution move toward steady values of about 3.0 for β and about 2.400 for η . Figure 9 shows graphically the trend of parameters according to different instants of analysis.

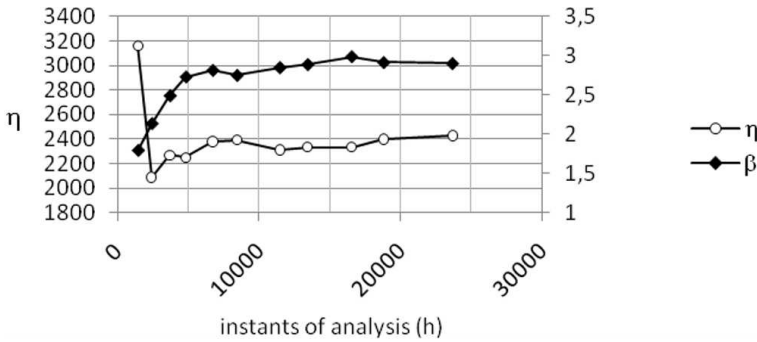


Fig. 9. Trend of Weibull parameters according to the different service times (KKL5699)

Another interesting analysis deals with the link between the estimate of Weibull parameters and the censoring rate. Figures 10 and 11 show the significant role played by CR on β and η paths. The different censoring rates are due to a fixed number of censored data (i.e. 9) and an increasing number of failure data.

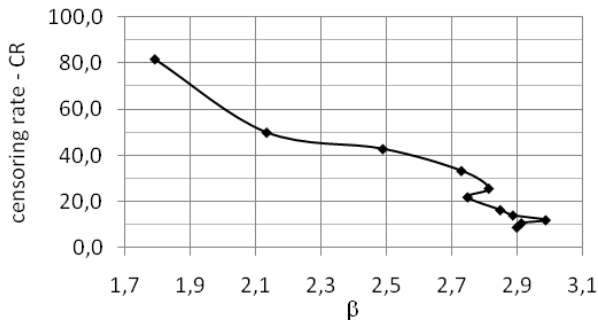


Fig. 10. Shape factor (β) according to the censoring rate (CR) (KKL5699)

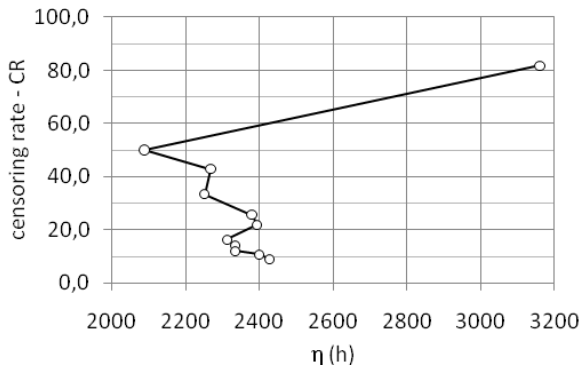


Fig. 11. Scale factor (η) according to the censoring rate (CR) (KKL5699)

Reliability functions, such as the survival function, the cumulative probability of failure and the hazard rate, can be directly derived by 2-parameters Weibull distribution using the

estimated parameters of Table 7. Figure 12 shows the survival function $R(t)$ of component KKL5699 for a generic *time interval* t estimated after 2,410, 4,824 and 23,688 hours of service.

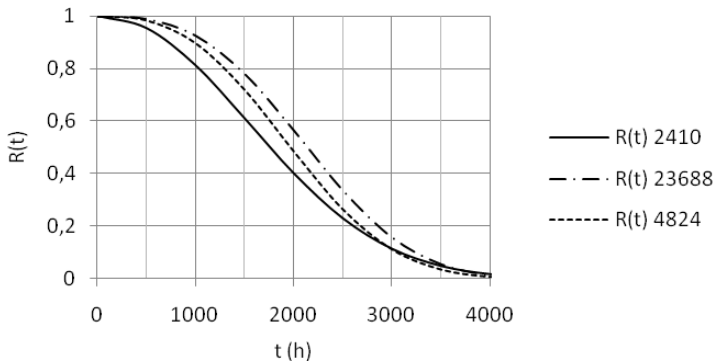


Fig. 12. Survival function (Weibull distribution) according to different instants of analysis (KKL5699)

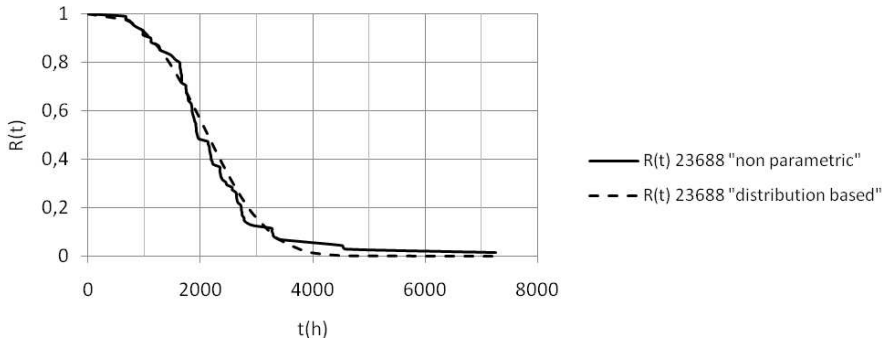


Fig. 13. Comparison between Survival functions obtained by non-parametric method and by 2-parameters Weibull distribution for component KKL5699 after 23,688 hours.

The proposed framework (Fig.1) provides both the *non parametric* and the *distributions based* approaches. Their use usually results in similar outcomes but, as stated before, the second one incorporates more information and is preferable when possible. Figure 13 shows the comparison between the estimates of the survival functions of component KKL5699 obtained after 23,688 hours of service adopting the two different approaches.

3.2.2 Analysis of the subset S1

The stationary and dependence tests of the times to failure highlight how all the components of subset S1 can be described as having a Renewal Process behavior. Failure and censored data are used to perform the Product Limit Estimator method to evaluate empirical values of the cumulative failure distributions. The *2-parameters Weibull* distribution is used to evaluate the reliability functions in an analytical manner; in particular the distribution parameters are estimated using the Least Square method for each instant of analysis. Table 8 summarizes the results in terms of Weibull parameters and in terms of index of fit after 23,688 operating hours.

No.	Component	Code	shape factor β	scale factor η	index of fit
1	tow equipment	KKL5699	2,900	2.427,910	0,9723
2	brake shoes	BF4-45	2,071	3.157,351	0,9885
3	primary hinge	IHF7598	3,541	1.879,467	0,9478
4	penstock	KK1243	2,761	4.578,568	0,9627
5	skillet ball bearing	A9097	2,684	3.125,457	0,9798

Table 8. Parameters of Weibull distribution of S1 components after 23.688 operating hours

Figure 14 shows the survival function of the critical components as calculated on the basis of the parameters reported in Table 8.

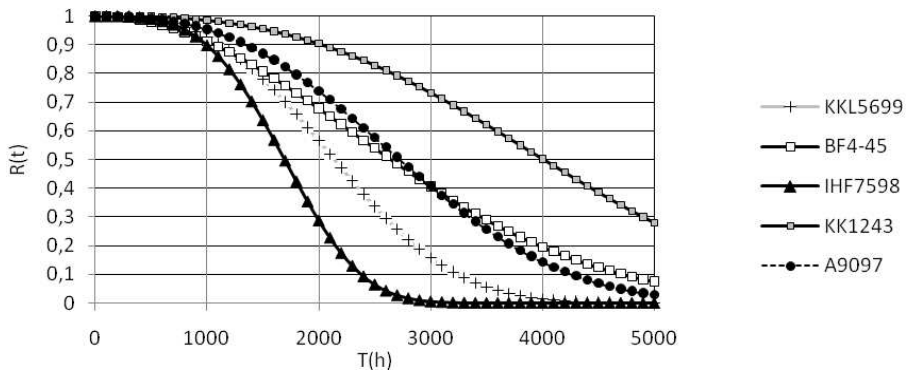


Fig. 14. Survival function of S1 components (2-parameters Weibull)

4. Conclusion

The Failure Process Modeling plays a fundamental role in reliability analysis of manufacturing systems. Complex methodologies are often applied using false assumptions such as constant failure rates, statistical independence between components, renewal processes and others. These misconceptions result in poor evaluation of the real reliability performance of components and systems. All complicated subsequent analysis may be compromised by an incorrect initial assessment relating to the failure mode process.

The experimental evidences show that a correct definition of the model describing the failure mode is a very critical issue and requires efforts often not sufficiently focused on by engineers.

The information collection of both failure data and censored data is a fundamental step. The CMMS method and a system automatically managing the alarms coming from the different sensors installed, can represent valid tools to improve this phase.

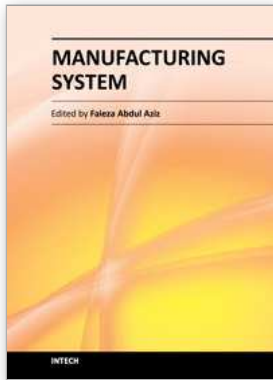
As demonstrated in the presented applications, the neglecting of the censored information results in significant errors in the evaluation of the reliability performance of the components.

The knowledge of a fitted analytical distribution is very interesting, because it allows several developments: for example, the determination of the best intervention frequency, or the optimization of the procedures that determine spare parts consumption or the best management of their operating costs.

The FPM procedure must also be maintained: during the service of systems, the reliability data set grows and a more robust estimation of reliability functions is allowed. FPM process, performed using the proposed framework (Fig. 1), must be an iterative procedure renewed during the life of systems.

5. References

- Ansell J.I., Phillips M.J., *Practical methods for reliability data analysis*, Oxford University Press, New York, 1994.
- Ascher H.E. Feingold H., *Repairable systems reliability. Modeling, inference, misconceptions and their causes*, Marcel Dekker, New York, 1984.
- Battini D., Persona A., Regattieri A., Buffer size design linked to reliability performance: a simulative study, *Computers and Industrial Engineering* 56(4), pp. 1633-1641, 2009.
- Coetzee J., The role of NHPP models in practical analysis of maintenance failure data, *Reliability Engineering & System Safety*, 56 (2), pp. 161-168, 1997.
- Cox D.R., Lewis P.A., *The statistical analysis of series of events*, Methuen, London, 1966.
- Ebeling C.E., *Reliability and maintainability engineering*, McGraw-Hill, New York, 2005.
- Ferrari E., Gamberi M., Pareschi A., Persona A., Regattieri A., On importance of reliability data collection for failure rate modelling: Reliability Active Data Base – RADB. 9th International Conference on reliability and quality in design. pp. 132-137. Honolulu – USA, 2003.
- Jiang S.T., Landers T.L., Rhoads T.R., Semi-parametric proportional intensity models robustness for right-censored recurrent failure data, *Reliability Engineering & System Safety*, 90 (1), pp. 91-98, 2005.
- Louit D.M., Pascual R., Jardine A.K.S., A practical procedure for the selection of time-to-failure models based on the assessment of trends in maintenance data, *Reliability Engineering & System Safety*, Elsevier, London, online.
- Manzini R., Regattieri A., Pham H., Ferrari E., *Maintenance for industrial systems*, ISBN: 978-1-84882-574-1, Springer, London, 2009.
- Manzini R., Gamberi M., Regattieri A., Persona A., Framework for designing a flexible cellular assembly system, *International journal of production research* 42 (17), pp. 3505-3528, 2004.
- Manzini R., Gamberi M., Regattieri A., Applying mixed integer programming to the design of a distribution logistic network, *International journal of industrial engineering-theory applications and practice*, 13(2), pp. 207-218. 2006.
- Manzini R., Gamberi M., Gebennini E., Regattieri A., An integrated approach to the design and management of a supply chain system, *International journal of advanced manufacturing technology*, 37(5-6), pp.625-640, 2008.
- O'Connor P., *Practical reliability engineering*, ISBN:978-0-47084-463-9, Wiley, New York, 2002.
- Persona A., Regattieri A., Pham H., Battini D., Remote control and maintenance outsourcing networks and its applications in supply chain management, *Journal of operations management*, 25(6), pp.1275-1291, 2007.
- Regattieri A., Gamberi M., Gamberini R., Manzini R., Managing lumpy demand for aircraft spare parts, *Journal of air transport management*, 11(6), pp. 426-431, 2005.
- Regattieri A., Manzini R., Battini D., Estimating reliability characteristics in presence of censored data: a case study in a light commercial vehicle manufacturing system, *Reliability Engineering & System Safety*, 95 (10), pp. 1093-1102, 2010.



Manufacturing System

Edited by Dr. Faieza Abdul Aziz

ISBN 978-953-51-0530-5

Hard cover, 448 pages

Publisher InTech

Published online 16, May, 2012

Published in print edition May, 2012

This book attempts to bring together selected recent advances, tools, application and new ideas in manufacturing systems. Manufacturing system comprise of equipment, products, people, information, control and support functions for the competitive development to satisfy market needs. It provides a comprehensive collection of papers on the latest fundamental and applied industrial research. The book will be of great interest to those involved in manufacturing engineering, systems and management and those involved in manufacturing research.

How to reference

In order to correctly reference this scholarly work, feel free to copy and paste the following:

Alberto Regattieri (2012). Reliability Evaluation of Manufacturing Systems: Methods and Applications, Manufacturing System, Dr. Faieza Abdul Aziz (Ed.), ISBN: 978-953-51-0530-5, InTech, Available from: <http://www.intechopen.com/books/manufacturing-system/reliability-evaluation-of-manufacturing-systems-methods-and-applications>

INTECH
open science | open minds

InTech Europe

University Campus STeP Ri
Slavka Krautzeka 83/A
51000 Rijeka, Croatia
Phone: +385 (51) 770 447
Fax: +385 (51) 686 166
www.intechopen.com

InTech China

Unit 405, Office Block, Hotel Equatorial Shanghai
No.65, Yan An Road (West), Shanghai, 200040, China
中国上海市延安西路65号上海国际贵都大饭店办公楼405单元
Phone: +86-21-62489820
Fax: +86-21-62489821

© 2012 The Author(s). Licensee IntechOpen. This is an open access article distributed under the terms of the [Creative Commons Attribution 3.0 License](#), which permits unrestricted use, distribution, and reproduction in any medium, provided the original work is properly cited.