

Foot Sole Scanning by Laser Metrology and Computer Algorithms

J. Apolinar Muñoz Rodríguez and Francisco Cháves Gutierrez
*Centro de Investigaciones en Optica
México*

1. Introduction

In recent years, the foot sole anatomy has been used in applications such as footwear manufacturing, person identification, foot deformation and health care (Xiong S., et. al 2010). Typically, the foot sole shape is used to make profitable shoes (Lee Au E. Y., et. al 2007). Nowadays, several researches have been developed in computer vision to detect the foot sole. Methods such as multiple camera, photogrametry, laser trinagulation, fringe projection habe been used to determine the foot sole. The lighthings methods, compute the surface of foot sole based on the calibration via perspective projection. Thus, the calibration provides the vision parameters to compute the object surface. These lighting methods provide a smoothed surface of the foot sole and some details are not profiled (Chen M. J. L. et. al, 2003). Furthermore, these systems do not provide the fitting of the shoe sole mould to the foot sole. The laser line technique can be used to improve these matters. In this technique, the three-dimensional surface is computed based on laser triangulation and the calibration via perspective projection model (Zhou F., et. al, 2005). The calibration includes the measurement of the distances of the setup geometry, focal distance, camera orientation, pixel scale and image centre. Typically, the calibration is performed by an external procedure to the vision system. This procedure is carried out by the recognition of the calibrated references. Typically, the setup geometry is modified online. In this case, a re-calibration is necessary to compute the three-dimensional surface (Wang G. et. al, 2004). But, the calibration references do not exist online and the calibration should be repeated. In this case, the perspective projection does not provide online re-calibration.

In the proposed chapter, a review of our methods for three-vision are applied to determine the foot sole. The proposed vision system moved in x -axis to perform the scanning. Here, an automatic re-calibration is performed to overcome limitations caused by online geometric modifications and physical measurements. This technique, retrieves the foot sole by laser line metrology and Bezier networks. Also, the modifications on the setup geometry are re-calibrated based on the data provided by the network. Thus, the accuracy and the performance are improved. The vision system is implemented based on laser line to scann the foot sole. Here, the three-dimensional model is performed by approximation networks based on behavior of the line position (Muñoz Rodríguez J.A, et. al, 2007). Also, the extrinsic and intrinsic parameters are computed based on the data provided by the network. Thus, setup modifications are re-calibrated during the visión task and external procedures are

avoided. In this manner, limitations caused by online modification are avoided. Thus, a contribution is achieved in the field calibration of vision parameters for foot sole scanning. This technique is evaluated respect to the perspective projection model, which is used in laser triangulation for foot sole profiling. The error analysis is based on the root mean squared of error using references of a contact method. This technique is applied to fitting the shoe last to the foot sole. This procedure is carried out by Bezier curves using the foot sole data, which are outside of the contour of the shoe last. Also, foot length, foot width, heel width, mid foot width, arch length and arch angle are measured to achieve the fitting of the shoe last. In this manner, a profitable shoe last is achieved for footwear manufacturing. Thus, a contribution is achieved by the vision system on this field. Also, the time processing is short to obtain the foot sole topography.

2. Basic description of vision system

The proposed vision system includes an electromechanical device, a glass window, a CCD camera, a laser line projector and a computer. Fig. 1 shows the experimental setup to perform the foot sole scanning. In this setup, the laser line is projected perpendicularly to the glass window. Here, the laser line pass by the glass window and then it is projected on the foot sole. Then, the CCD camera captures the projected line on the foot sole. The camera and the laser diode are mounted on a linear slide, which can be moved in x -axis, y -axis and z -axis. To perform the scanning, the laser and the camera are moved in x -axis. From this scanning, a Bezier network computes the foot sole topography based on the position of laser line. Also, the three-dimensional modeling and the calibration are performed by means of the network. This modeling is performed based on the setup geometry shown in Fig.2. In this geometry, the x -axis and y -axis are located on the glass window, which correspond to the reference plane. The z -axis is located perpendicularly to the reference plane. The focal length f is the distance between the lens and the image plane. The center of image plane is indicated by x_c in the x -axis. The distance between the laser line and the optical axis is indicated by ℓ_a . In the z -axis, the foot sole depth is indicated by $h(x, y)$. The distance between the lens and the foot surface is defined by $z_l = D + h(x, y)$. In the proposed modeling, the surface depth is computed based on the position of laser line (Muñoz Rodríguez J.A, et. al, 2003). When the laser line is projected on the point A of the reference plane, the line position in the image plane is x_A . When the laser line is projected on the point B of the foot sole, the line position is shifted to the position x_B . This line shifting is described by next expression

$$s_i = x_A - x_B \quad (1)$$

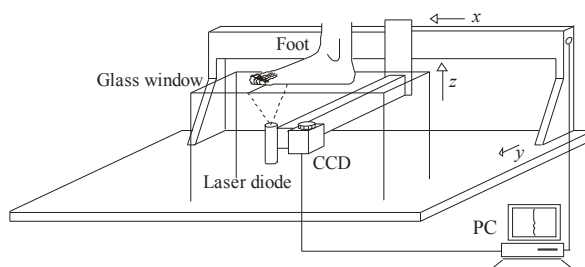


Fig. 1. Experimental setup for foot sole scanning.

Based on the camera position, the shifting s_i is directly proportional to the foot sole depth $h(x, y)$. This relationship is performed by a Bezier network to compute the surface depth. The network to compute the foot sole depth is described in section 3.

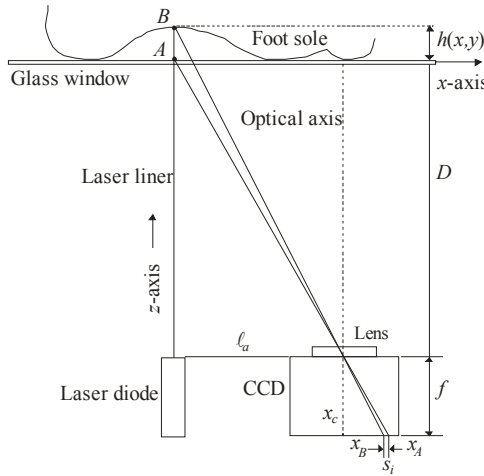


Fig. 2. Geometry of the experimental setup to compute the surface depth.

To compute the shifting, the line position x_B and x_A are detected in the image. This procedure is performed by measuring the intensity maximum in each row of the image. To carry it out, the pixels are approximated to a continuous function. Then, first and second derivative are computed to obtain the maximum. In this case, the pixels are represented by $(x_0, I_0), (x_1, I_1), \dots, (x_n, I_n)$, where x_i is the pixel position, I_i is the pixel intensity and n is the pixel number. Bezier curves are used to fit a continuous function from the pixel intensity. The Bezier curves (Mortenson M. E., 1997) are described by

$$P(u) = \sum_{i=0}^n \binom{n}{i} (1-u)^{n-i} u^i p_i, \quad \binom{n}{i} = \frac{n!}{i!(n-i)!}, \quad 0 \leq u \leq 1. \tag{2}$$

By applying the definition of Eq.(2), two equations are obtained, one for x and one for I :

$$x(u) = \binom{n}{0} (1-u)^n u^0 x_0 + \binom{n}{1} (1-u)^{n-1} u^1 x_1 + \dots + \binom{n}{n} (1-u)^0 u^n x_n, \quad 0 \leq u \leq 1. \tag{3}$$

$$I(u) = \binom{n}{0} (1-u)^n u^0 I_0 + \binom{n}{1} (1-u)^{n-1} u^1 I_1 + \dots + \binom{n}{n} (1-u)^0 u^n I_n, \quad 0 \leq u \leq 1. \tag{4}$$

Eq.(3) represents the pixel position and Eq.(4) represents the pixel intensity. Based on these equations, a continuous function is fitted from the pixels a laser line image. To carry it out, the pixel position $x_0, x_1, x_2, \dots, x_n$, are substituted into Eq. (3) and the pixel intensity $I_0, I_1, I_2, \dots, I_n$, are substituted into Eq.(4). These two equations are evaluated in the interval $0 \leq u \leq 1$ and the result of this curve is a concave function. Therefore, the second derivative $I''(u)$ is positive and the peak is a maximum global. In this manner, the maximum of $I(u)$ is

computed based on the first derivative $I'(u)=0$ (Frederick H., et. al, 1982). To find the derivative $I'(u) = 0$, the bisection method is applied. The Bezier function is defined in the interval $0 \leq u \leq 1$. Therefore, the initial values are $u_i=0$ and $u_f=1$. Then, the middle point is computed by $u^*=(u_i+u_f)/2$ to find u that converges to the $I'(u)=0$. Then, the first derivative $I'(u)$ is evaluated in middle point u^* . If the derivative $I'(u = u^*)$ is positive, then $u_i = u^*$. If the derivative $I'(u = u^*)$ is negative, then $u_f = u^*$. The next middle point u^* is obtained from the last pair of values u_i and u_f . These steps are repeated until to find $I'(u)=0$ based on a tolerance value. The value $u=u^*$ where $I'(u) = 0$ is substituted into Eq.(3) to determine the position of the intensity maximum $x(u)$.

3. Bezier network of a laser line

The network to perform the three-dimensional modeling includes an input vector, two parametric inputs, a hidden layer and an output layer. Each layer of this network is performed as follow. The input includes: the surface depth $h_0, h_1, h_2, \dots, h_n$, the line shifting s_i , and parametric values (u, v) . The value u is proportional to the shifting s_i according to the camera position in x -axis. The line shifting s_i is obtained by the procedure described in section 2. This shifting is represented by a value u , which is obtained by the next expression.

$$u = a_0 + a_1 s, \quad (5)$$

where a_0 and a_1 are constant to be determined. By means of two values s and its respective value u , Eq.(5) is determined. The Bezier curves are defined in the interval $0 \leq u \leq 1$. Therefore, $u=0$ for the first line shifting and $u=1$ for the last line shifting s_n . Substituting these values in Eq.(5), two equation with two unknown constants are obtained. Solving these equations, a_0 and a_1 are determined. Thus, for each shifting s_i , a value u is computed via Eq.(5). The value v is proportional to the coordinate y in y -axis. This relationship is described by the next expression

$$v = b_0 + b_1 y \quad (6)$$

where b_0 and b_1 are the unknown constants. Using two values y and its respective v from Bezier curves, Eq.(6) is determined. Bezier curves are defined in the interval $0 \leq v \leq 1$. Therefore, $v=0$ for the first y and $v=1$ for the last y . Substituting these two values y and its respective v in Eq.(6), two equation with two unknown constants are obtained. Solving these equations, b_0 and b_1 are determined. Thus, for each coordinate y , a value v is computed via Eq.(6). The hidden layer is built by a Bezier basis function, which is described by

$$B_{ij} = B_i(u) B_j(v), \quad (7)$$

where

$$B_i(u) = \binom{n}{i} u^i (1-u)^{n-i}, \quad B_j(v) = \binom{m}{j} v^j (1-v)^{m-j}, \quad \binom{n}{i} = \frac{n!}{i!(n-i)!}, \quad \binom{m}{j} = \frac{m!}{j!(m-j)!}$$

The output layer is obtained by the summation of the neurons, which are multiplied by a weight. Thus, the output response is the surface dimension given by next expression

$$h(u, v) = \sum_{i=0}^n \sum_{j=0}^m w_{ij} h_i B_i(u) B_j(v), \quad 0 \leq u \leq 1, 0 \leq v \leq 1, \quad (8)$$

where w_{ij} are the weights, h_i is the known object surface, $B_i(u)$ and $B_j(v)$ are the Bezier basis function represented by Eq.(7). To construct the complete network Eq.(8), the suitable weights w_{ij} should be determined. To carry it out, the network is being forced to produce the correct surface depth $h(x,y)$ by means of an adjustment mechanism. This procedure is performed based on the shifting s_i produced by the known depth h_i . The coordinate y is the pixel number in the image of the vertical laser line. Then, the shifting s_i is converted to a value u via Eq.(5) and the coordinate y is converted to a value v via Eq.(6). Then, the depth h_i and its coordinate (u, v) are substituted in Eq.(8). Thus, next output $H(u, v)$ is generated

$$H(u, v) = w_{00}h_0B_0(u)B_0(v) + w_{01}h_1B_0(u)B_1(v) + \dots, + w_{0n}h_nB_0(u)B_n(v) + \dots, + \quad (9)$$

$$w_{m0}h_0B_m(u)B_0(v) + \dots, + w_{mn}h_nB_m(u)B_n(v)$$

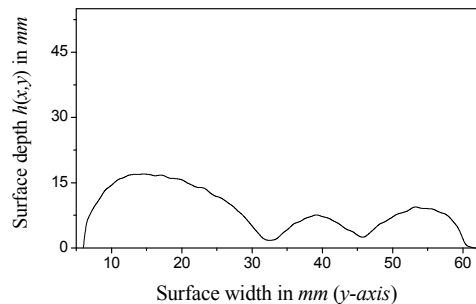
Based on this output, a linear system is obtained and Eq.(9) is solved. In this manner, the weights w_{ij} are determined. Thus, the Bezier network $H(u, v)$ has been completed. The result of this network is a model that computes the foot sole depth $h(x,y)$ based on a line shifting s_i . Fig. 3(a) shows a projected laser line on a foot sole mould. Here, the network is applied to obtain a profile of the mould of foot sole. To carry it out, the shifting s_i is detected in each image row, which corresponds to the coordinate y . Then, the shifting s_i is converted to a value u and the coordinate y is converted to the value v . Then, these values are substituted in the network Eq.(9) to compute the surface depth shown in Fig. 3(b). To know the accuracy, the data provided by the network are compared with the data provided by a contact method. The accuracy is computed based on a root means squared error (*rms*) (Masters T., 1993) by

$$rms = \sqrt{\frac{1}{n} \sum_{i=1}^n (ho_i - hc_i)^2} \quad (10)$$

where ho_i is the data provided by a coordinate measure machine (CMM), hc_i is the calculated data by the network and n is the number of data. For the data shown in Fig. 3(b), the error is a $rms=0.118$ mm.



(a)



(b)

Fig. 3. (a) Laser line projected on the foot sole mould. (b) Surface depth computed by the network from the laser line Fig.3 (a).

The depth resolution is provided by the network based on the minimum line shifting. In this setup, the magnitude of s_i is based on the camera position. Therefore, the depth resolution is defined as the minimum s_i based on the distance ℓ_a . In this case, the network is built using the minimum s_i and the maximum s_i at distance ℓ_a of the camera position. For this configuration, a shifting $s_i=0.38$ pixels is detected from the reference plane. To compute the surface depth, this s_i is substituted in the Eq.(8) and the result is $h=0.28$ mm.

4. Calibration of vision parameters

In the lighting methods, the object surface is computed based on the calibration of the vision parameters. This procedure is performed based on the perspective projection model (McIvor A. M., 2002). Thus, the distances of the setup geometry, focal distance, camera orientation, pixel scale and image centre are determined. The calibration is carried out by means of a transformation matrix and calibrated references. This calibration is performed by the transformation $P_w=(x_w, y_w, z_w)$ to the camera coordinates $P_c=(x_c, y_c, z_c)$ by $P_c=R \cdot P_w+t$. Where R is a rotation matrix and t is a translation vector. Here, the transformation of P_c to the image coordinates (X_u, Y_u) is given by $X_u=fx_c/z_c$ and $Y_u=fy_c/z_c$. Considering radial distortion, the image coordinates are represented by $X_d+D_x=X_u$ and $Y_d+D_y=Y_u$. Where $D_x=X_u(\delta_1 r^2+\delta_2 r^4+\dots)$, $D_y=Y_u(\delta_1 r^2+\delta_2 r^4+\dots)$ and $r=(X_u^2+Y_u^2)^{1/2}$. In these expressions, X_d and Y_d are the distorted image coordinates. Also, these image coordinates in pixels should be converted to real coordinates by means a scale factor η . Thus, the parameters to be calibrated are the matrix R , the vector t , the focal distance f , the distortion coefficient δ_i , the image center (c_x, c_y) and the scale factor η . This procedure is carried out by using calibrated references such as rectangles or circles (Zhou F., et. al, 2005). In this step, coordinates of the calibrated references are detected. Then, the vision parameters are passed to the vision system to compute the object surface. The setup modifications play an important role to get good sensibility. Due to these modifications, a re-calibration is necessary to compute the three-dimensional shape (Wang G., et. al, 2004). But, the calibration references do not exist for online measurements. Therefore, an online re-calibration is not possible. In this case, the calibration is repeated again via calibrated references. Therefore, an automatic re-calibration is necessary to overcome limitations caused by online geometric modifications.

In the proposed setup, camera is placed around the central axis of the foot to perform the scanning. Here, the electromechanical device provides distance modification between the surface and the optical devices. When the vision system is moved in x -axis or y -axis, the setup geometry is not modified. But, when the vision system is moved in z -axis, the setup geometry is modified. Here, a re-calibration is performed based on the data provided by the network (Muñoz Rodríguez J. A., 2011). The camera orientation is described based on the geometry shown in Fig. 4. In this geometry, the shifting s_1, s_2, \dots, s_n correspond to the depth h_1, h_2, \dots, h_n , respectively. The distance between the lens and the surface depth is indicated by $z_i=D+h_i$. In this case, the optical axis is perpendicular to the reference plane. Thus, the depth h_i has a projection k_i in the reference plane. In this manner, the relation $(h_i/k_i)=[(D+h_i)/\ell_a]=[f/(\eta x_B - \eta x_c)]$ is obtained. In this expression, η is the pixel size. Also, the displacement can be defined by $s_i=(x_A-x_c)-(x_B-x_c)$. Thus, the projection k_i in the reference plane is deduced by

$$k_i = \frac{\eta(x_B - x_c)h_i}{f} = \frac{\eta[(x_A - x_c) - s_i]h_i}{f} \quad (11)$$

Considering radial distortion, $X_A = x_A + \delta_A$ and $X_B = x_B + \delta_B$, where x is the distorted image coordinate and δ is the distortion. Thus, the displacement is defined by $S_i = (X_A - x_c) - (X_B - x_c)$. Therefore, the projection k_i Eq.(11) is rewritten by

$$ku_i = \frac{\eta(X_B - x_c)h_i}{f} = \frac{\eta[(X_A - x_c) - S_i]h_i}{f} \quad (12)$$

From Eq.(12) f , η , x_c , X_A are constant and ku_i is the projection undistorted. In this case, a linear S_i produces a linear ku_i and the derivative ku_i respect to S_i dku/dS is a constant.

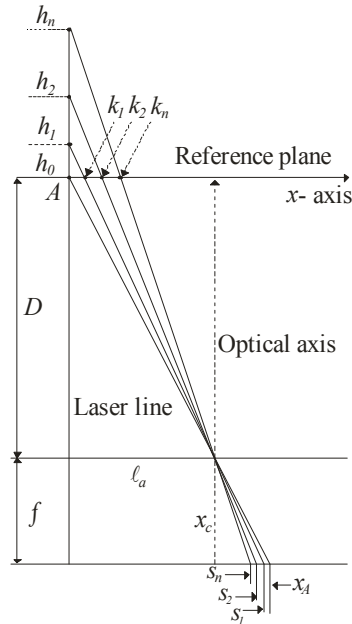


Fig. 4. Geometry of the relationship between the line shifting and the surface depth.

The camera orientation in y -axis is performed based on the geometry of Fig. 5. In this case, a surface pattern in the laser line is moved in steps y_i according to the depth h_i in the y -axis. Thus, the shifting pattern is computed by $t_i = \eta(y_A - y_i) = \eta(y_A - y_c) - \eta(y_i - y_c)$. Based on this geometry, the next expression is obtained by triangulation

$$q_i = \frac{\eta(y_i - y_c)h_i}{f} = \frac{\eta[(y_A - y_c) - t_i]h_i}{f}, \quad (13)$$

Considering radial distortion, $Y_A = y_A + \delta_A$ and $Y_i = y_i + \delta_i$, where y is the distorted image coordinate and δ is the distortion. In this case, $T_i = \eta(Y_A - y_c) - \eta(Y_i - y_c)$. Thus, the projection q_i in the reference plane is deduced by

$$qu_i = \frac{\eta(Y_i - y_c)h_i}{f} = \frac{\eta[(Y_A - y_c) - T_i]h_i}{f} \quad (14)$$

From Eq.(14) f, η, y_c, Y_A are constant. In this case, a linear T_i produces a linear qu_i ; and the derivative dqu/dT is a constant. Therefore, the camera orientation is defined by the $dku/dS = \text{constant}$ and $dqu/dT = \text{constant}$.

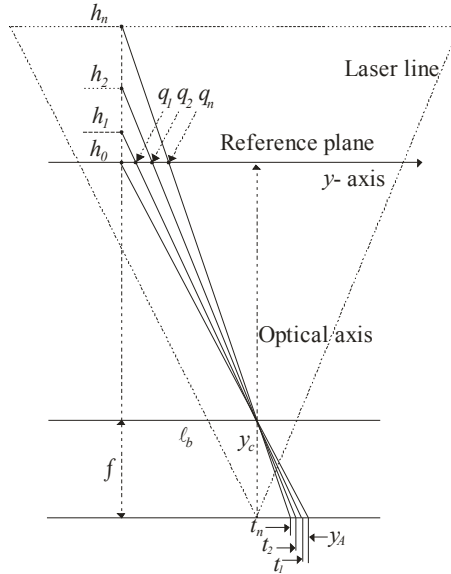


Fig. 5. Geometry of a perpendicular optical axis to the reference plane in y -axis.

For the camera orientation in x -axis, k_i is computed via Eq.(11) using the surface h_i provided by the network based on s_i . Due to the distortion, the derivative dk/ds is not exactly a constant. But, this derivative is the more similar to a constant. For the camera orientation in y -axis, k_i is computed via Eq.(13). Also, the derivative dq/dt is not exactly a constant. But, this derivative is the more similar to a constant. Therefore, the camera orientation perpendicular to reference plane is defined when the dk/ds and dq/dt are very similar to constant according to tolerance. To compute $dku/ds = \text{constant}$, the derivative of first projection k_1 is used. Thus, $dku_i/ds = dk_1/ds = \text{constant}$ for $i=1,2,\dots,n$ and $ku_i = i * k_1$. The first derivative of k_i is selected because the distortion is observed in the last pixels of the image. Thus, using the terms from Eq.(11) and Eq.(12), the next expression is obtained

$$h_i = \frac{f k u_i}{\eta(x_B + \delta_B - x_c)} = \frac{f k_i}{\eta(x_B - x_c)}, \tag{15}$$

From Eq.(15), the distortion δ_B can be computed by the next expression

$$\delta_B = \frac{(x_B - x_c)(k_i - k u_i)}{k_i}, \tag{16}$$

From the terms $s_i = (x_A - x_c)$ and $S_i = (X_A - x_c) - (X_B - x_c) = (x_A - x_c) + (\delta_A - \delta_B)$, the expression $S_i = s_i + (\delta_A - \delta_B)$ is obtained. Thus, using the terms from Eq.(11) and Eq.(12), the next the distortion δ_B can be computed by the next expression

$$h_i = \frac{f k u_i}{\eta[(X_A - x_c) - S_i]} = \frac{f k_i}{\eta[(x_B - x_c) - s_i]}, \delta_B = \frac{k u_i}{k_i} (x_A - x_c - s_i) - (x_A - x_c) + s_i \quad (17)$$

In this manner, the orientation and distortion have been deduced. Based on a perpendicular optical axis, the vision parameters are deduced. This procedure is carried out based on $S_i = s_i + (\delta_A - \delta_B)$ and the setup geometry Fig.4, which is described by

$$\frac{D + h_i}{\ell_a} = \frac{f}{\eta(X_B - x_c)} = \frac{D + h_i + f}{\eta(X_B - x_c) + \ell_a} = \frac{D + h_i + f}{\eta(X_A - x_c - S_i) + \ell_a}, \quad (18)$$

From this equation η is the scale factor and D is the distance from the lens to the reference plane. The constant D , ℓ_a , f , η , x_c are determined by rewritten Eq.(18) in the next equation system

$$\begin{aligned} h_0 &= \frac{f \ell_a}{\eta(X_A - x_c - S_0)} - D \\ h_1 &= \frac{f \ell_a}{\eta(X_A - x_c - S_1)} - D \\ h_2 &= \frac{f \ell_a}{\eta(X_A - x_c - S_2)} - D \\ h_3 &= \frac{f \ell_a}{\eta(X_A - x_c - S_3)} - D \\ h_4 &= \frac{f \ell_a}{\eta(X_A - x_c - S_4)} - D \\ h_5 &= \frac{f \ell_a}{\eta(X_A - x_c - S_5)} - D \end{aligned} \quad (19)$$

The values h_0, h_1, \dots, h_5 , are computed by the network based on s_0, s_1, \dots, s_5 at the camera position x_c . Base on s_i , δ_A and δ_B , the values X_A and S_i are computed. Then, these values are substituted in Eq. (19) to solve the equation system. Thus, the constant D , ℓ_a , f , η , and x_c are determined. The coordinate y_c is computed by $T_i = \eta(Y_i - y_c) - \eta(Y_{i+1} - y_c)$ from the geometry of Fig.5. From this expression, the data η , t_i , Y_i are known and y_c should be determined. This procedure is performed by the next equation system

$$\begin{aligned} T_1 &= \eta(Y_1 - y_c) - \eta(Y_2 - y_c). \\ T_2 &= \eta(Y_1 - y_c) - \eta(Y_3 - y_c). \end{aligned} \quad (20)$$

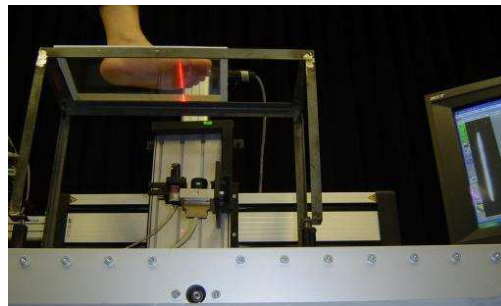
The values T_1 , T_2 , Y_1 , Y_2 and Y_3 are collected from the camera orientation in y -axis. These values are substituted in Eq.(20) to solve the equation system and the value y_c is determined. In this manner, the vision parameters are determined based on the data provided by network and image processing.

Typically, occlusions appear in the scanning of the foot sole. These occlusions are shown in the reported results by lighting methods (Cortizo E., et. al 2003). To avoid the occlusions, the camera position should be moved away from the surface in z -axis or toward laser line in x -

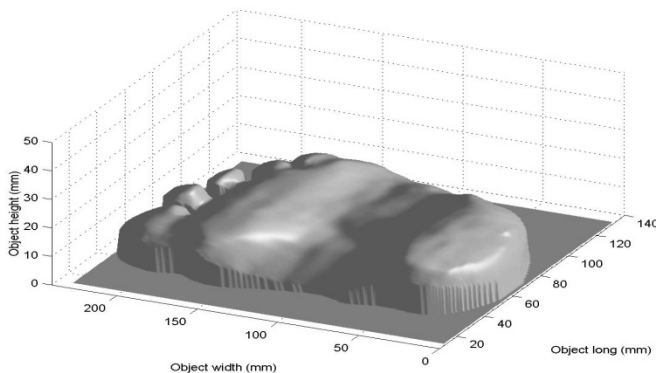
axis. When an occlusion appears, the electromechanical device moves the camera away from the surface in z-axis. In this case, initial geometry has been modified and the displacement magnitude is different from the initial configuration. Therefore, the displacement should be converted to a displacement of the initial configuration. This procedure is carried out by the calibration of vision parameters via Eq.(19). Thus, the vision system provides online geometric modifications to overcome occlusions. The accuracy provided by the network and by the perspective projection is shown in section 5.

5. Results of foot sole scanning

The proposed foot sole scanning is performed based on Bezier networks without physical measurements. In the setup, the scanning is carried out a 15 mW laser line in x -axis in steps of 1.69 mm. The laser line is captured and digitized in 256 gray levels. From each image, the network computes the surface depth based on the line shifting s_i . The depth resolution provided by the network is around of 0.28 mm. Thus, the foot sole is reconstructed by the network.



(a)



(b)

Fig. 6. (a)- Scanning of foot sole by the vision system. (b)-Three-dimensional shape of the foot sole.

The foot sole to be profiled by the vision system is the shown in Fig.6(a). To carry it out, the foot sole is scanned by a laser line. In this step, a set of images is captured by the CCD

camera. From each image, the network computes the surface depth. This procedure is performed detecting line shifting via Eq.(1). Then, the shifting s_i is converted to a value u via Eq.(5). Also, the coordinate y of the laser line is converted to a value v via Eq.(6). Then, the values (u, v) are substituted in Eq.(9) to obtain the depth $H(u, v)$. Thus, the network produces a transverse section of the foot sole. Then, all transverse sections are stored in array memory to obtain the shape of the foot sole shown in Fig. 6(b). The scale of this figure is in *mm*. One hundred and forty six images are processed to obtain the whole foot sole. In this case, the number of data to compute the accuracy was $n=490$ and the error is a $rms=0.137$ *mm*.

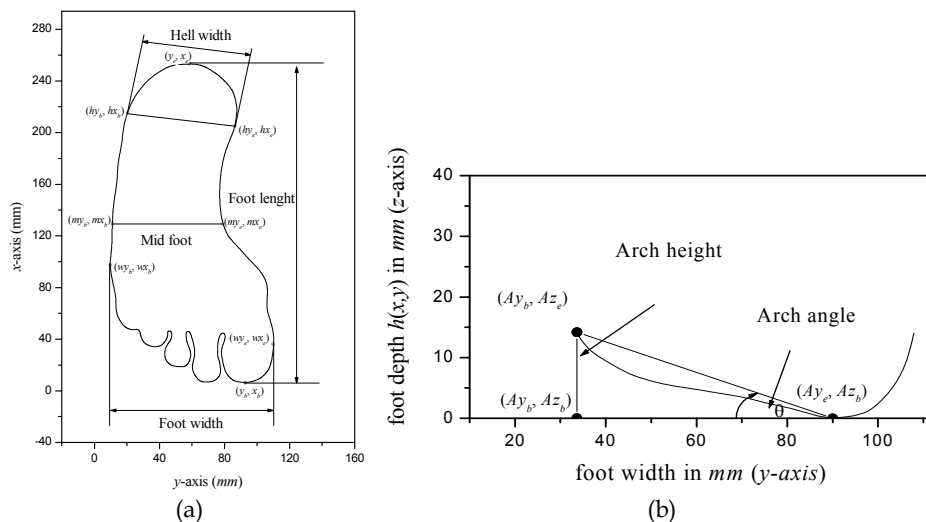


Fig. 7. (a) Plantar contour of the foot sole, which include foot length, foot width, heel width, mid foot width, arch height and the arch angle. (b) Geometry of arch height and arch angle.

The morphological parameters that provide the model of a foot sole are the foot length, foot width, heel width, mid foot width, arch height and the arch angle (San-Tsung B. Y., Zhang M., Fan Y. B., Boone D. A., 2003). Therefore, these parameters should be computed from the foot sole to perform the fitting to the shoe mould. To compute these parameters, the contour of the foot sole shown in Fig. 7(a) is extracted via edge detection. The foot length is obtained by detecting the distance between the heel point to the maximum value of the contour in the direction of x -axis. Thus, the foot length is computed by the distance $= x_e - x_b = 247.8136$ *mm*. The foot width is the breadth computed along the foot sole in y -axis. This distance is computed by detecting the maximum and minimum value in of the contour in y -axis. Thus, the foot width $= w_y - w_e = 102.4685$ *mm*. The mid foot width is the breadth of the foot sole at $1/2$ of the length foot in x -axis. Therefore, the mid foot width is computed by detecting the coordinates of the two points of the contour in y -axis. Thus, mid foot width $= m_y - m_e = 67.3522$ *mm*. The heel width is the breadth of the foot sole at $1/6$ of the foot length in x -axis. Therefore, in this position, the heel width is computed by detecting the coordinates of the two points of the contour in y -axis. Thus, heel width $= h_y - h_e = 66.0853$ *mm*. The arch height is the distance from the reference plane to the apical arch in z -axis. Therefore, arch height is

computed by detecting the maximum distance in z -axis. Thus, the arch height $=Az_e - Az_b = 14.1472 \text{ mm}$, which is the shown in Fig.7(b). The arch angle is the angle formed between the apical arch and the reference plane in z -axis. This angle is computed based on geometry shown in Fig.7(b). Thus, arch angle is computed as $\theta = \tan^{-1}[(Az_e - Az_b)/(Ay_e - Ay_b)] = 14.7816$. The accuracy of the morphological parameters of the foot sole is around 0.1 mm . Typically, the accuracy required in foot sole measurement is 1 mm (Cortizo E., et. al, 2003). The accuracy provided by the Bezier network for the three-dimensional vision of the foot sole is around of a $rms = 0.130 \text{ mm}$. This means an error minor than 1%. This result is good according to the reported results in the recent years (Lee Au E. Y., et. al, 2007).

The approach of this technique is to fitting a shoe last to the foot sole. This procedure is carried out by adjusting the shoe last to the plantar contour. The shoe last to be fitted is shown in Fig. 8(a). To carry it out, the shoe last is scanned in the vision system and a set of images is captured. The network computes the shoe last depth from each image. Thus, the network produces a transverse section of the shoe sole from each line image. Then, all transverse sections are stored in array memory to obtain the shoe sole shown in Fig. 8(b). The scale of this figure is in mm . The accuracy computed based on the error for the shoe sole mould is a $rms = 0.121 \text{ mm}$.

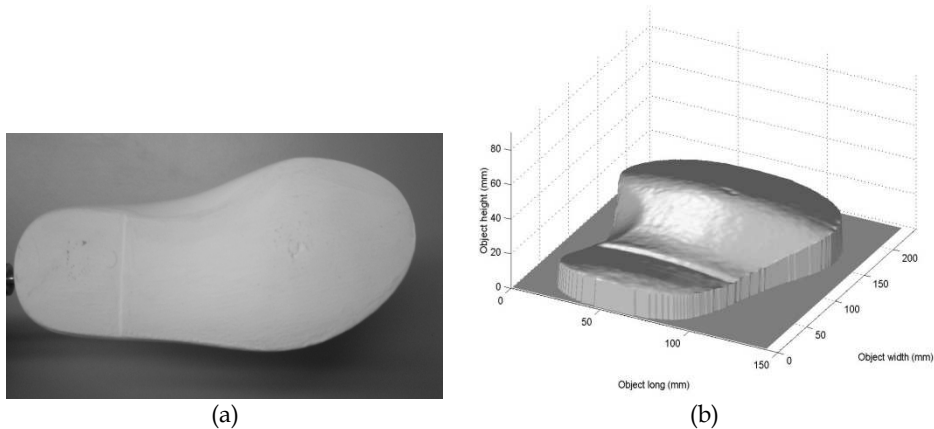


Fig. 8. (a) Shoe las to be profiled. (b) Three-dimensional shape of the shoe last.

Secondly, the morphologic parameters of the foot sole are compared with the parameters of the contour of shoe last. In this case, the parameters of the shoe mould are different to parameters of the foot sole. Therefore, the contour of the shoe last should be modified. To carry it out, the contours of the foot sole and the shoe last are overlapped. The procedure of this overlapping is shown in Fig.9(a). In this figure, the dot line corresponds to the foot sole contour and the continuous line corresponds to the shoe last. Thirdly, Bezier curves Eq.(3) and Eq.(4) are applied to perform the contour fitting. This procedure is carried out using the foot sole points, which are outside of the shoe mould contour. In this case, $x(u)$ corresponds to the coordinate in x -axis and $l(u) = y(u)$ corresponds to the coordinate in y -axis. Thus, the coordinates x are substituted into Eq.(3) and the coordinates y are substituted into Eq.(4).

These two equations are evaluated in the interval $0 \leq u \leq 1$ to fit the shoe sole mould. The result of the fitted contour of the shoe sole mould is shown in Fig. 9 (b). In this manner, the fitting of the shoe sole mould has been completed.

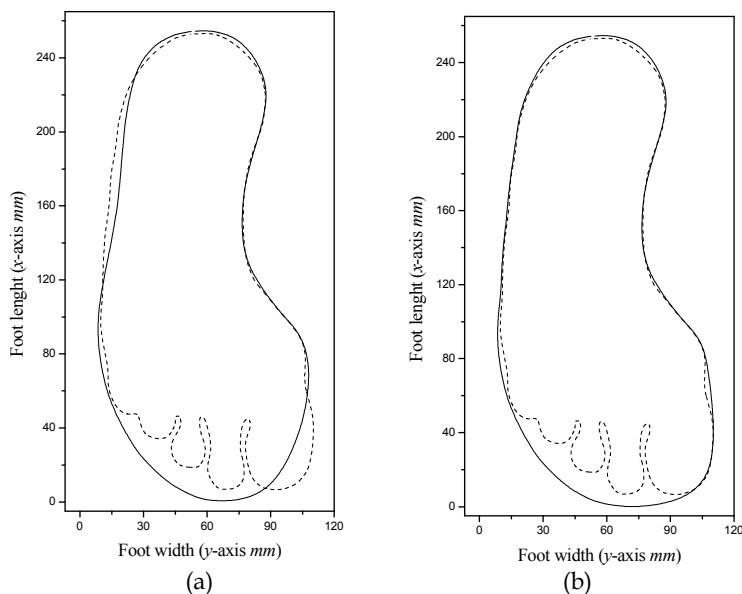


Fig. 9. (a) Overlapping of the foot sole contour on the shoe last contour. (b) Fitted contour of the shoe mould to the foot sole contour via Bezier curves.

The employed computer in this vision system is a PC to 1.8 GHz. The capture velocity of the camera is 34 fps. Also, the electromechanical device is moved at 34 steps per second. Each image of laser line is processed by the network in 0.010 sec. The shape of the foot sole is profiled in 5.75 sec. The time processing of the proposed system provides a fast method to perform the three-dimensional vision of the foot sole. In this procedure, distances of the geometry of the setup are not used to compute the surface depth. Therefore, the proposed reconstruction of the foot sole is easier than the reported techniques. The reported are based on the laser triangulation and perspective projection techniques and the vision parameters are collected by an external procedure. In this manner, the proposed technique is performed automatically by Bezier networks and the measurements on optical setup are avoided.

6. Conclusions

A technique for three-dimensional vision of the foot sole based on Bezier networks has been presented. The described technique here provides a valuable tool for the footwear manufacturing. In this procedure, a Bezier network provides the measurement of the foot sole and the vision parameters. This system performs the fitting of the shoe sole mould to the foot sole via Bezier curves. The automatic technique avoids the physical measurements on the setup. Also the proposed network provides the data to compute the geometric

modifications due to the mobile setup. This procedure improves the performance and the accuracy of the results. It is because measurement errors are not passed to the vision system. The ability to detect the laser line with a sub-pixel resolution has been achieved by Bezier curves. This procedure is achieved with few operations. In this computational-optical setup, a good repeatability is achieved in each reconstructed surface. Therefore, this technique is performed in good manner.

7. Acknowledgment

J. Apolinar Muñoz Rodríguez would like to thank the financial support by CONACYT Mexico.

8. References

- Chen Y., Medioni G.G., 1992. Objec Modeling by Registration of Multiple Range Images. *Images and Vision Computing*, 10(3): 145 - 155.
- Chen M. J. L., Chen C.P.C., Lew H. L., Hsieh W. C., Yang W. P., Tang S. F. T., 2003. Measurement of forefoot varus angle by laser technology in people with flexible flatfoot. *American Journal of Physical Medicine and Rehabilitation*, 82: 842-846.
- Cortizo E., Moreno Years A., Leopore J. R., Garavaglia M., 2003. Application of structured illumination method to study the topography of the sole of the foot during a walk. *Opt. Lasers Eng.* 40: 117 - 132.
- Frederick H., Lieberman G. J., 1982. *Introduction to operations research*, McGraw- Hill, USA.
- Lee Au E. Y., Ravindra Goonetilleke S., 2007. A qualitative study on the comfort and fit of ladies' dress shoes. *Applied Ergonomics*, 38: 687-696.
- Masters T., 1993. *Practical Neural Networks Recipes in C++*, Academic Press, San Diego (CA) U.S.A.
- Mclvor A. M., 2002 . Nonlinear calibration of a laser stripe profiler. *Opt. Eng.* 41: 205-212.
- Mortenson M. E., 1997. *Geometric Modeling*, Willey, Second edition, U.S.A.
- Muñoz Rodríguez J. A., Rodríguez-Vera R., 2003. Evaluation of the light line displacement location for object shape detection. *Journal of Modern Optics*, 50: 137-154.
- Muñoz Rodríguez J. A., Rodríguez-Vera R., 2007. Shape detection using a light line and a Bezier approximation network. *Imaging Science Journal*, 55: 29-39.
- Muñoz Rodríguez J. A., 2011. Online self-calibration for mobile vision based on laser imaging and computer algorithms. *Opt. Lasers Eng.* 49: 680-692.
- San-Tsung B. Y., Zhang M., Fan Y. B., Boone D. A., 2003. Quantitative comparison of the plantar foot shapes under different weight bearing conditions. *Journal of rehabilitation Research development*, 40: 517-526.
- Wang G., Hu Z., Wu F., Tsui H. T., 2004. Implementation and experimental study on fast object modeling based on multiple structured light stripes. *Opt. Lasers Eng.*, 42: 627-638.
- Xiong S., Zhao J., Jiang Z., Dong M., 2010. A computer-aided design system for foot-feature - based shoe last customization. *Int. J. Adv. Manuf. Technol.*, 46: 11-19.
- Zhang S., Huang P. S., 2006. Novel method for structured light system", *Opt. Eng.*, 45: 083601.
- Zhou F., Zhang G., Jiang J., 2005. Constructing feature points for calibration a structured light vision sensor by viewing a plane from unknown orientation. *Opt. Lasers Eng.*, 43: 1056-1070.



Laser Scanner Technology

Edited by Dr. J. Apolinar Muñoz Rodríguez

ISBN 978-953-51-0280-9

Hard cover, 258 pages

Publisher InTech

Published online 28, March, 2012

Published in print edition March, 2012

Laser scanning technology plays an important role in the science and engineering arena. The aim of the scanning is usually to create a digital version of the object surface. Multiple scanning is sometimes performed via multiple cameras to obtain all slides of the scene under study. Usually, optical tests are used to elucidate the power of laser scanning technology in the modern industry and in the research laboratories. This book describes the recent contributions reported by laser scanning technology in different areas around the world. The main topics of laser scanning described in this volume include full body scanning, traffic management, 3D survey process, bridge monitoring, tracking of scanning, human sensing, three-dimensional modelling, glacier monitoring and digitizing heritage monuments.

How to reference

In order to correctly reference this scholarly work, feel free to copy and paste the following:

J. Apolinar Muñoz Rodríguez and Francisco Cháves Gutierrez (2012). Foot Sole Scanning by Laser Metrology and Computer Algorithms, Laser Scanner Technology, Dr. J. Apolinar Muñoz Rodríguez (Ed.), ISBN: 978-953-51-0280-9, InTech, Available from: <http://www.intechopen.com/books/laser-scanner-technology/foot-sole-scanning-by-laser-metrology-and>

INTECH
open science | open minds

InTech Europe

University Campus STeP Ri
Slavka Krautzeka 83/A
51000 Rijeka, Croatia
Phone: +385 (51) 770 447
Fax: +385 (51) 686 166
www.intechopen.com

InTech China

Unit 405, Office Block, Hotel Equatorial Shanghai
No.65, Yan An Road (West), Shanghai, 200040, China
中国上海市延安西路65号上海国际贵都大饭店办公楼405单元
Phone: +86-21-62489820
Fax: +86-21-62489821

© 2012 The Author(s). Licensee IntechOpen. This is an open access article distributed under the terms of the [Creative Commons Attribution 3.0 License](#), which permits unrestricted use, distribution, and reproduction in any medium, provided the original work is properly cited.