

Towards Non-Invasive Bedside Monitoring of Cerebral Blood Flow and Oxygen Metabolism in Brain-Injured Patients with Near-Infrared Spectroscopy

Mamadou Diop, Jonathan T. Elliott, Ting-Yim Lee and Keith St. Lawrence
*Imaging Division, Lawson Health Research Institute
London, Ontario
Canada*

1. Introduction

Monitoring the injured brain to detect and treat harmful events that can cause secondary injury during the acute recovery period is a central part of neurointensive care. The most basic monitoring tool is the neurological examination, such as the Glasgow Coma Score; however, a large component of this scale involves verbal communication and brain-injured patients are often comatose, mechanically ventilated or sedated. As well, symptoms of neurological deterioration detected by examination often occur at late stages of brain injury. Since the brain is extremely vulnerable to ischemia, a more direct indicator of potential brain injury is detecting impaired cerebral blood flow (CBF). Multiple factors following brain injury can cause ischemia, including systemic hypotension, cerebral hemorrhage, and edema - all of which independently worsen survival (Helmy et al., 2007). This focus has led to the recognition that continuous monitoring of CBF in patients with, or at risk of, brain injury could improve outcome by providing the ability to detect and prevent cerebral ischemia.

Imaging techniques, such as magnetic resonance imaging (MRI) and computed tomography (CT), are critical to the management of brain-injured patients as they provide detailed structural and functional information of the brain when patients are admitted to an emergency department (Gallagher et al., 2007). CT is the modality of choice because it is widely available and examination times are relatively short. Furthermore, techniques for measuring CBF have been developed on these imaging modalities (Wintermark et al., 2005) and subsequently used to identify CBF abnormalities following brain injury (DeWitt & Prough, 2003; Gowda et al., 2006; Soustiel et al., 2008). Despite these promising advances, conventional imaging modalities suffer from serious disadvantages regarding cerebral monitoring. First, they require transferring patients to imaging facilities which represents a significant risk factor when dealing with critically ill patients. Second, they only provide a single time-point measurement and, therefore, suffer from the possibility of missing flow abnormalities that occur at different times during intensive care. Clearly, effective cerebral monitoring requires bedside techniques.

Since CBF is driven in part by the cerebral perfusion pressure (CPP) which depends on intracranial pressure (ICP), using these pressures as surrogate markers of CBF is becoming an integral part of critical care practice. Intracranial pressure is typically measured using either a ventricular catheter or an intraparenchymal probe, and CPP is determined by the difference between mean arterial pressure (MAP) and ICP. Although there have been no large randomized trials comparing target thresholds, it is generally recommended that the ICP threshold above which treatment should be initiated is between 20-25 mm Hg (Bratton et al., 2007b). Similarly, CPP should be maintained above 60 mm Hg to ensure adequate CBF (Bratton et al., 2007a). However, the thresholds for ICP and CPP remain a source of contention. Increasing CPP (70-90 mm Hg) was found to reduce ischemia (Coles et al., 2004), but comes at the cost of increased incidence of extracranial complications and possibly contributes to vasogenic edema (Robertson et al., 1999). The Lund protocol advises a lower limit of 50 mm Hg to prevent complications while avoiding extremely low CBF (Asgeirsson et al., 1994). It has even been suggested that CPP/ICP therapy only increases therapy intensity without improving outcome (Cremer, 2008). Strictly adhering to targets can therefore give clinicians a false sense of security. A method of measuring CBF at the bedside would remove this ambiguity since the occurrence of ischemia due to inadequate CPP or hyperemia due to excessive CPP therapy would be readily apparent.

The most widely used bedside technique for monitoring CBF is transcranial Doppler (TCD). This non-invasive technique derives blood flow velocity from the Doppler shift caused by moving red blood cells in a cerebral artery. Provided the angle of insonation and the diameter of the interrogated vessel remain constant, changes in TCD measurements reflect CBF changes (Valdúeza et al., 1997). However, the accuracy of TCD is operator dependent due to problems of probe fixation, the TCD signal is not found in 10-30% of patients, and the technique cannot monitor blood flow in the microvasculature, which can be quite different from flow in the major arteries (Wright, 2007). Invasive techniques for monitoring CBF that require inserting probes directly into brain tissue include laser Doppler (LDF) and thermal diffusion flowmetry (TDF) (Bolognese et al., 1993; Sioutos et al., 1995). These techniques have been used to detect ischemia in brain-injured patients and TDF was shown to be more sensitive than TCD to assessing vasospasm, demonstrating the value of assessing CBF directly (Kirkpatrick et al., 1994; Vajkoczy et al., 2001). Besides being invasive, the major limitation with LDF and TDF is that they can only monitor the vascular territory where the probes are placed. Wider applicability of CBF monitoring requires non-invasive techniques that can assess CBF in multiple brain regions.

A promising alternative to current invasive monitoring techniques is near-infrared spectroscopy (NIRS). Due to the relative transparency of biological tissue to near-infrared (NIR) light, the brain can be interrogated non-invasively by probes placed on the scalp (Jobsis, 1977). Not only is NIRS non-invasive and safe, due to the use of non-ionizing radiation, the major tissue endogenous chromophores – water, oxy- and deoxy-hemoglobin (HbO₂ and Hb), cytochrome c oxidase, and lipids – have unique absorption properties in this wavelength range. The challenge to quantifying tissue chromophores concentrations with NIRS is the need to account for the strong light scattering, which dominates over light absorption. To meet this challenge, techniques that can take into account the effects of scattering have been developed and NIRS is now widely used to continuously monitor HbO₂ and Hb, and derive cerebral blood oxygenation. The most reported NIRS parameter is the ratio of HbO₂ to total haemoglobin (i.e., HbO₂ + Hb), which reflects cerebral blood oxygen saturation and is commonly referred to as the tissue oxygenation index (TOI). The TOI has been proposed for detecting ischemia and

assessing autoregulation by comparison to MAP (Al-Rawi & Kirkpatrick, 2006; Brady et al., 2008). The difficulties with using TOI as a surrogate of CBF are that blood oxygenation is influenced by multiple factors (CBF, cerebral metabolism, arterial saturation and hematocrit) and the “normal range” has yet to be defined. Reported TOI values have ranged from 60 to 85%, and this variation is as great as the change attributed to ischemia (Al-Rawi & Kirkpatrick, 2006; Thavasoathy et al., 2002; Yoshitani et al., 2002).

NIRS techniques that can directly measure CBF have been developed. The first method proposed was based on the Fick principle and used a rapid change in arterial oxygen concentration as a blood flow tracer (Edwards et al., 1988). Improved sensitivity was achieved using indocyanine green (ICG) due to its strong light-absorbing properties (Patel et al., 1998). This FDA-approved dye has been in clinical use for over 30 years and has a high safety record; a study involving more than 3000 human subjects, showed that intravenous injection of ICG resulted in significant allergic reaction in only one subject (Hope-Ross et al., 1994). Absolute CBF, rather than a relative measure, was obtained with the ICG approach using a dye densitometer, to measure the arterial blood ICG concentration, a NIRS method capable of quantifying the tissue ICG concentration and a deconvolution method (Brown et al., 2002; Springett et al., 2001). Because of the inherent sensitivity of NIRS to blood oxygenation, CMRO₂ can also be measured by combining NIRS measurements of CBF and oxygenation. In addition, CMRO₂ has been shown to be a better marker of injury severity in hypoxia-ischemia than CBF alone (Tichauer et al., 2006a). In this chapter we will show that NIRS can be used to measure cerebral blood flow and oxygen metabolism, and to detect general and focal brain injuries.

2. Theory

2.1 Cerebral blood flow model

The hemodynamics of an organ can be quantified by tracking the passage of a contrast agent through the vascular bed, an approach that has been adapted to imaging modalities including MRI and CT, and to NIRS. With this method, the amount of contrast agent in the organ at a given time t ($Q(t)$) is related to the difference between its arterial ($C_a(t)$) and venous concentrations ($C_v(t)$), and to blood flow (F) via the Fick Principle (Meier & Zierler, 1954):

$$\frac{dQ(t)}{dt} = FC_a(t) - FC_v(t). \quad (1)$$

If $Q(t)$, $C_a(t)$ and $C_v(t)$ could be measured non-invasively, then the calculation of flood flow would be a simple mathematical operation but that is not the case since $C_v(t)$ cannot be measured noninvasively. However, the venous concentration of contrast agent can be expressed in term of $C_a(t)$ as (Lee, 2002):

$$C_v(t) = C_a(t) * h(t), \quad (2)$$

where $*$ is the convolution operator and $h(t)$ is the impulse response function of the organ (i.e., the distribution of transit times) and represents the venous concentration of contrast agent if the arterial input was a Dirac-delta function. From Eq. (1) and (2) it can be shown that $Q(t)$ can be expressed as (Lee, 2002):

$$Q(t) = C_a(t) * F \cdot R(t). \quad (3)$$

Equation (3) shows that CBF can be determined by measuring $Q(t)$ and $C_a(t)$, and applying a deconvolution technique to extract $F \cdot R(t)$. The initial height of the function $F \cdot R(t)$ is CBF, as by definition $R(0) = 1$, and the area under the curve is the cerebral blood volume (CBV) (Brown et al., 2002). It is clear from Eq. (3) that determining CBF requires the quantification of the tracer concentration in the brain. Fig. 1 shows an example of $Q(t)$ and $C_a(t)$ measured on a piglet and the retrieved $F \cdot R(t)$.

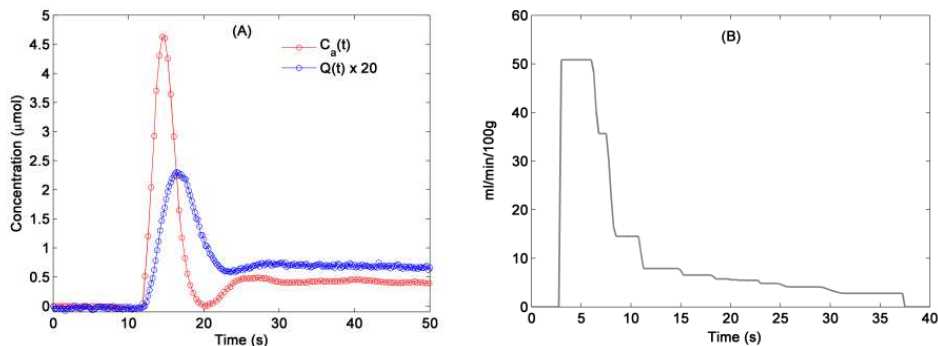


Fig. 1. (A) An example of tissue and arterial ICG concentration curves measured with a NIRS apparatus and a dye densitometer respectively. The curves were measured simultaneously over a period of 50 seconds after injection of an ICG bolus. The peak arterial concentration is approximately 20 times greater than that of tissue. This is because blood volume in tissue is approximately 5 % of the total tissue volume. (B) Cerebral blood flow scaled impulse residue function, $F \cdot R(t)$, retrieved from the deconvolution of the curves in (A). Height of initial plateau yields CBF (50 ml/min/100g) and area under the curve is CBV.

2.2 Measuring the cerebral metabolic rate of oxygen

The NIRS CBF measurements can be used to determine $CMRO_2$ by applying the Fick Principle (Tichauer et al., 2006b):

$$CMRO_2 = F \cdot (AVDO_2), \quad (4)$$

where $AVDO_2$ is the arterial-venous difference of oxygen, or the difference between the oxygen concentration of the arterial system feeding the tissue of interest and the oxygen concentration of the venous system draining the tissue. Assuming that the oxygen content of arterial blood is the same throughout the body (Brown et al., 2003), the arterial O_2 concentration can be obtained from hemoximeter analysis of arterial blood samples from a periphery artery or non-invasively from a pulse oximeter. The venous O_2 concentration is more difficult to determine non-invasively. However, considering that the Hb measured in the brain is due solely to O_2 dissociation from HbO_2 , the NIRS measurements of tissue Hb concentration can be used as an indirect measure of the venous O_2 concentration. With this approach, it is necessary to account for the fact that the tissue Hb concentration is a weighted average of the three blood compartments: arterial, capillary and venous. The relative distribution of arterial, capillary, and venous compartments in the total CBV is generally accepted to be approximately 20%, 10%, and 70% respectively (Phelps et al., 1979).

Assuming that the capillary concentration of Hb is the average of arterial and venous concentrations, the venous concentration of Hb can be expressed as:

$$[Hb]_V = \frac{4}{3} \cdot \frac{[Hb]_T}{CBV \cdot \rho} - \frac{1}{3} \cdot [Hb]_a, \quad (5)$$

where $[Hb]_V$, $[Hb]_T$, and $[Hb]_a$ are the venous, tissue, and arterial concentrations of Hb, respectively. The tissue Hb concentration, $[Hb]_T$, is measured by NIRS and $[Hb]_a$ can be measured by either hemoximeter analysis of an arterial blood sample or pulse oximetry. The NIRS measurement of $[Hb]_T$ is normalized by the dilution factor, $CBV \cdot \rho$, to determine the concentration of Hb in just the blood compartment of the tissue region of interest. The density of brain tissue, ρ , is 1.05 g/ml and is used to convert the CBV from volume of blood per mass of tissue to volume of blood per volume of tissue. Finally, with knowledge of the total hemoglobin (tHb = Hb + HbO₂) measured from a blood sample, the venous O₂ concentration can be determined as follows (Brown et al., 2003):

$$\text{Venous O}_2 \text{ Concentration} = ([tHb] - [Hb]_v) \cdot 1.39 \text{ ml O}_2 / \text{gHb}. \quad (6)$$

3. Measurement of $Q(t)$ and $Ca(t)$

3.1 Measurement of tissue chromophores concentration

Fig. 2 shows a picture of the cart housing the broadband continuous-wave NIRS instrument. The main components of the apparatus are the light source, the fiber optic cables (optodes), and the spectrometer. The light source is a power-stabilized halogen light bulb and the spectrometer consists of a holographic grating and a cooled CCD camera. During measurements, the two optodes are placed 3.0 cm apart on the skull of the subject. One optode is used to guide the light from the source to the head and the other collects light re-emitted from the head and transmits it to the holographic grating of the spectrometer, where it is dispersed across the cooled CCD chip (cooled to 70°C to reduce electronic dark noise) to generate an attenuation spectrum every 200 ms.

Measured spectra were analyzed on the basis of the principle that when NIR light enters tissue, it is multiply scattered and partially absorbed by endogenous tissue chromophores, such as water, HbO₂, Hb, cytochrome c oxidase, and lipids. Since scattering causes the total pathlength traveled by the NIR light from the emission optode to detection probe to be larger than the physical distance between the two optodes, a simple approach is to take into account the increase in pathlength using the differential pathlength factor (DPF), as first described by Delpy et al. (Delpy et al., 1988). With accurate knowledge of the DPF, a modified version of the Beer-Lambert law can be used to determine absolute changes in the concentrations of the NIR absorbers (Cope, 1991):

$$\Delta A(\lambda) = \sum_i \Delta c_i \cdot DPF \cdot L \cdot \varepsilon_i(\lambda), \quad (7)$$

where $\Delta A(\lambda)$ is the change in the attenuation spectra, Δc_i is the absolute change in concentration of the i^{th} NIR absorber, L is the physical distance between the emission and detection probes, and $\varepsilon_i(\lambda)$ is the extinction coefficient of the i^{th} NIR absorber as a function of wavelength. In particular, Eq. (7) can be used to quantify tissue ICG concentration, following a bolus injection of the dye, since there is no ICG in the brain prior to the injection.

Furthermore, the second derivative technique described by Matcher et al. (Matcher et al., 1994) can be applied to the broadband data, in conjunction with the assumption of 85% water concentration in the brain in infants and 80% in adults (Matcher & Cooper, 1994), to obtain the DPF and absolute concentrations of endogenous absorbers – as opposed to absolute changes of concentrations – in real time.



Fig. 2. Picture of the potable NIRS apparatus.

3.2 Arterial ICG concentration measurement

Arterial ICG concentration can be measured noninvasively on a peripheral artery (e.g., a foot in the case of a piglet) using a dye densitometer unit (model DDG-2001 A/K, Nihon Kohden, Tokyo, Japan). The probe of the dye densitometer can be held on the skin using a spring-loaded clip, much the same as used for a regular pulse oximeter probe.

4. Validation experiments

4.1 CBF validation

Cerebral blood flow and blood volume were altered in a newborn piglet model, by changing the partial arterial carbon dioxide tension (PaCO_2), and concomitantly measured with NIRS and CT perfusion (Brown et al., 2002). Because of the portable nature of the NIRS apparatus, both NIRS and CT measurements were acquired with the piglet in the CT

scanner. Newborn piglets (less than a week old) were chosen to avoid complications due to extracerebral contamination of the NIRS signal that occurs in older subjects, which is discussed section 6. As shown in Fig. 3, there is a strong linear correlation between CT and NIRS hemodynamic measurements over a wide range. In addition, there is no significant statistical difference between CT and NIRS measurements of CBF and CBV, and the estimated bias are small relative to the respective mean values in each case. The precision of NIRS CBF and CBV measurements - determined using analysis of variance of repeated measurements - were 9.71% and 13.05% respectively. These results show that this NIRS technique is capable of accurate and reliable bedside measurement of cerebral hemodynamics in newborn piglets.

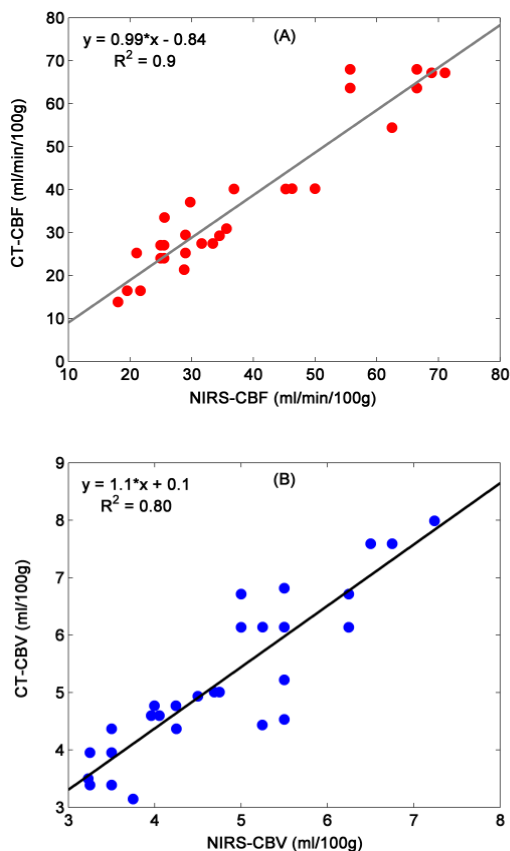


Fig. 3. Comparison of CT and NIRS measurements of cerebral blood flow and blood volume.

There are, however, some challenges facing the clinical application of the technique. Although the piglet head mimics that of a neonate in terms of skull composition and thickness, the two are significantly different in size and dimension. In this validation study an inter-optode distance of 3.0 cm was used and this yields a maximum depth of light

penetration of ~ 1.73 cm (Brown et al., 2002). This inter-optode separation should be appropriate for neonatal application since it has been shown that in this population, the thickness of the tissue overlying the brain are typically less than 5 mm and do not significantly interfere with NIR monitoring of the brain for inter-optode distance of at least 3 cm (Benaron et al., 1995). A potential inconvenience with this technique is that it requires an ICG injection. Although the use of an exogenous blood flow tracer is somewhat less appealing than using one of the endogenous NIR absorbers (for example HbO_2 or Hb), ICG results in a much higher signal-to-noise ratio.

This study demonstrated the ability of NIRS to accurately measure cerebral hemodynamics at the bedside and showed that this technique can monitor and diagnose ischemic injury in neonates. In ischemic brain injury, CBF is often low for an extended period of time before symptoms of injury are apparent. The ability to detect diminished CBF at an earlier stage would significantly aid earlier intervention and greatly reduce mortality and morbidity. It has also been suggested that loss of PaCO_2 reactivity is associated with poor neurodevelopmental outcome and/or hypoxic-ischemic encephalopathy and that the loss of PaCO_2 reactivity is a candidate for predicting early severe brain damage in preterm infants (Blankenberg et al., 1997; Muller et al., 1997). Because the NIRS-CBF technique is capable of providing reliable, non-invasive, repeatable measurements it can be used to detect loss of PaCO_2 reactivity, thereby greatly improving diagnosis.

4.2 CMRO_2 validation

The cerebral metabolic rate of oxygen measured by the NIRS technique were compared to CMRO_2 determined from the product of CBF and the cerebral arterial-venous difference in oxygen (AVDO_2) measured from blood samples (Tichauer et al., 2006b). The experiments were conducted in newborn piglets subjected to five cerebral metabolic states created by varying the plane of anesthesia. The blood samples were collected from a peripheral artery and the superior sagittal sinus. As such, the two CMRO_2 measurements were not collected from exactly the same brain volumes. However, there should be significant overlap between the two sampled volumes since both techniques primarily measure cortical tissue (Scremin et al., 1982). In addition, partial volume errors were avoided by using anesthetics to alter CMRO_2 globally (Schultz, 1978). No statistically significant difference was found, within a range of ~ 1.5 to 4.0 $\text{mlO}_2/\text{min}/100\text{g}$, between CMRO_2 measurements obtained with the two techniques at any anesthetic level. There was also a strong correlation between concomitant CMRO_2 values obtained from the two techniques (Fig. 3 in Tichauer et al., 2006b). Furthermore, repeated measurements obtained while maintaining constant CMRO_2 showed that the NIRS technique can measure CMRO_2 with a precision of 10.7%. All of this shows that CMRO_2 can be determined accurately by combining NIRS measurements of CBF and deoxy-hemoglobin.

It is evident from Eq. 4 that there are two key parameters that must be determined accurately to calculate CMRO_2 : CBF and AVDO_2 . Due to the difficulty of measuring these parameters, introduced by the high scattering properties of biological tissue, few studies have attempted to measure *absolute* CMRO_2 with NIRS. In this validation, the second derivative technique was applied to broadband data to account for scattering (Matcher et al., 1994) and real-time measurements of the differential pathlength were acquired using the known water concentration in brain (Matcher & Cooper, 1994). A consequence of the second derivative approach is that the AVDO_2 must be calculated solely from the Hb

signal as the second derivative of the HbO₂ absorption spectrum is relatively featureless (Cope, 1991). With this approach, an independent measure of the arterial oxygenation must be obtained, which can be determined directly from an arterial blood sample or indirectly from the arterial oxygen saturation. It is also necessary to normalize the tissue by CBV, which was obtained from the ICG measurements, and to assume a relative distribution of in the vasculature.

Quantitative measures of AVDO₂ were calculated under the assumption that the relative contribution of venous and arterial blood to the total blood volume in the brain is 3:1 (Phelps et al., 1979). Because of its importance, there have been a number of studies that have attempted to measure the relative vascular distribution (Hueber et al., 2001; Kusaka et al., 2002; Watzman et al., 2000; Wiedeman, 1963). These studies compared NIRS tissue oxygenation measurements to oxygenation measurements from arterial and venous blood samples, and found results similar to the 3:1 ratio which was originally derived from cerebrovascular resistance measurements. In addition, it has been shown that the AVDO₂ is relatively insensitive to errors in the assumed relative vascular contribution (Tichauer et al., 2010).

5. Applications

5.1 Detection of hypoxia-ischemia

Recent clinical trials have demonstrated that the incidence of death and disability from hypoxic-ischemic brain injury in newborns can be significantly reduced by initiating treatment strategies - hypothermia for example - after birth and within a 6 h therapeutic window (Chaudhari & McGuire, 2008; Eicher et al., 2005a; Eicher et al., 2005b; Gluckman et al., 2005; Shankaran et al., 2005). Due to the brevity of the therapeutic window, early detection of injury and an early determination of those infants who are likely candidates for treatment are crucial (Gunn & Bennet, 2008). In this regard, traditional early indicators of brain injury - including Apgar scores, umbilical artery acidosis and fetal heart rate monitoring - suffer from poor specificity (Carter et al., 1998; Shankaran, 1998) and more specific indicators of injury, such as magnetic resonance imaging and spectroscopy, are insensitive or difficult to implement within the therapeutic window (Cady, 2001; Martin & Barkovich, 1995). To this point, the most promising and clinically-feasible monitoring technique for early indicator of hypoxia-ischemia (HI) after birth has been amplitude-integrated electroencephalography (aEEG) due to its ease of use, non-invasiveness and high prognostic value as early as 3 h after birth (al Naqeeb et al., 1999; Toet et al., 1999). However, recent studies have questioned the sensitivity of aEEG to detect infants with milder injuries that could still benefit from treatment (Sarkar et al., 2008). Another potentially promising early indicator is reduction in CMRO₂ since HI is believed to impair oxidative metabolism.

To test the idea that NIRS-CMRO₂ measurements can improve early detection of perinatal HI, measurements were acquired in newborn piglets (Tichauer et al., 2009) before and after 1 h of reperfusion from HI - the duration of which was varied from piglet to piglet with a range of 3-24 min - under fentanyl/nitrous oxide anesthesia to mimic awake-like levels of cerebral metabolism. CMRO₂ was found to be significantly depressed following the insult; mean CMRO₂ was 2.61 ± 0.11 mlO₂·min⁻¹·100g⁻¹ prior to the insult and 1.58 ± 0.09 mlO₂·min⁻¹·100g⁻¹ after 1 h of reperfusion, respectively. The NIRS-CMRO₂ measurements were combined with aEEG and both measurements displayed statistically significant correlations

with duration of ischemia ($p < 0.05$; $r = 0.71$ and $r = 0.89$, respectively); however, only $CMRO_2$ was sensitive to milder injuries (< 5 min). These evidences suggest that the NIRS- $CMRO_2$ technique has the potential to delineate different insult severities within 1 h of reperfusion from hypoxia-ischemia in a piglet model of perinatal HI. Since the technique can be applied at the bedside of the sick newborn, these results highlight its potential to improve diagnosis and to monitor treatment of hypoxic-ischemic encephalopathy within the therapeutic window.

5.2 Focal brain injury

Although the previous sections highlight the potential of using NIRS for early detection of brain injury in newborns, CBF and $CMRO_2$ were only measured in a single brain volume as the NIRS instrument had only one detection channel. This limits the clinical applicability of the technique due to selective patterns of damage associated with major causes of neonatal brain injury, such as hypoxia-ischemia and intraventricular hemorrhage, and due to focal injury caused by ischemic stroke. To expand the detection capabilities of the NIRS apparatus to enable the measurements of regional CBF and $CMRO_2$, a relatively simple multiplexing approach based on electronically controlled mechanical shutters has been proposed (Diop et al., 2009). The entire apparatus was housed in a cart (see Fig. 2) and could be moved to the bedside. The ability of this multi-detector NIRS instrument to detect regional CBF and $CMRO_2$ abnormalities was tested in newborn piglets in which the vasoconstrictor Endothelin-1 (ET-1) was injected into the brain to cause a focal ischemic injury. Endothelin-1 is an amino acid peptide that possesses prolonged and profound vasoconstrictive effects on cerebral blood vessels (Diop et al., 2009). For comparison, regional CBF was concurrently measured by CT perfusion. Due to limited space on the piglet head, only four detection channels were used in that study. A general reduction in CBF was observed across all detection channels with the magnitude decreasing farther from the site of ET-1 injection; a trend that was also observed in the CT perfusion images. An excellent agreement was also observed between CBF in the lesion site, as determined from the CT perfusion images, and CBF measured by the NIRS optode nearest to the lesion site (optode 1 in Fig. 4). The NIRS- $CMRO_2$ measurements showed that ET-1 injection did not cause a significant change in cerebral energy metabolism. This was expected as $CMRO_2$ would be maintained, despite the reduction in CBF, by an increase in cerebral oxygen extraction. Although both NIRS and CT measured $\sim 50\%$ CBF reduction in the lesion region, this decrease was likely not sufficient to exhaust the compensatory effects of increased oxygen extraction. Typically, reductions in $CMRO_2$ are not observed until CBF falls below 25 ml/100g/min.

A limitation with this multi-channel NIRS apparatus is that it is not immune to partial-volume errors which could result in an overestimation of CBF in focal lesions significantly smaller than the sensitivity volume of a source-detector unit. One approach to improving the spatial resolution would be to combine the multi-channel NIRS instrument with a discrete-wavelength continuous-wave system with multiple emission and detection optodes. Broadband NIRS could be used to determine the DPF and the steady-state Hb concentration needed to determine $CMRO_2$. A discrete-wavelength imaging system could then be used to rapidly acquire dynamic ICG concentration data. The relative ICG data would be converted into absolute units using the DPF measurements. With such an approach, it may be possible to apply diffuse optical tomographic methods to further improve spatial resolution.

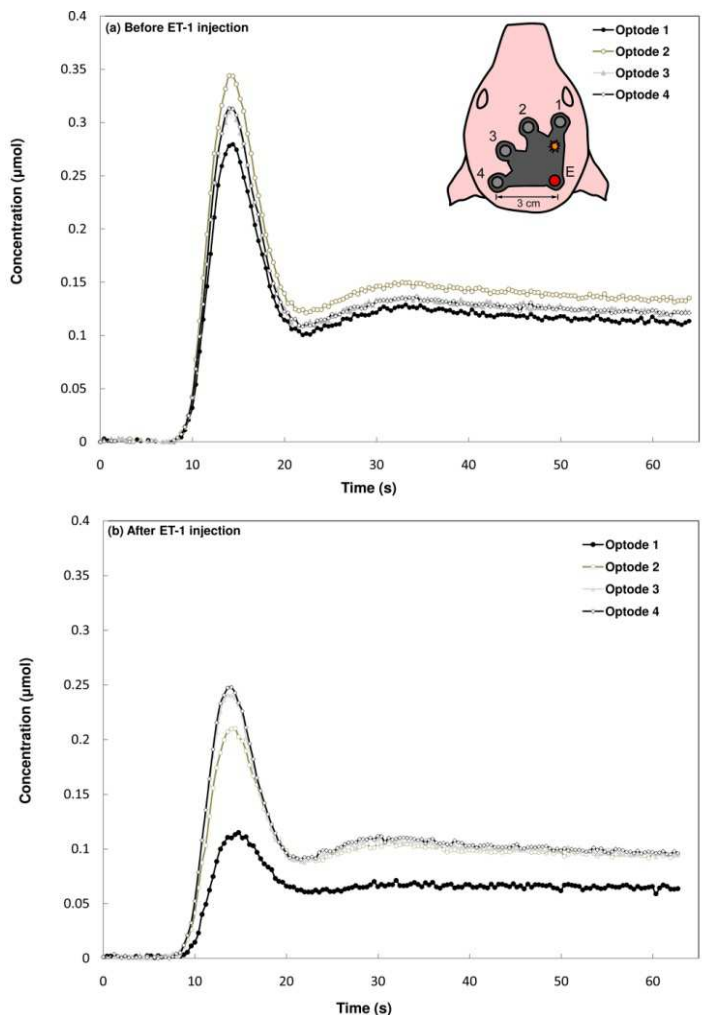


Fig. 4. Brain tissue ICG concentration curves obtained from detection optodes 1-4 before (a) and after (b) ET-1 injection. The reduction in the peak height of the ICG curve for optode 1 after ET-1 injection reflects the reduction in CBF caused by the drug. Shown in the top right hand side of (a) is a cartoon of a piglet head showing the location of the 4 detection optodes (labelled 1-4) relative to the emission optode (labelled E). The emission-detector distance was 3 cm in all cases. The approximate position of the ET-1 injection site is represented by the orange mark between the emission optode and detection optode 1.

6. Extra-cerebral signal contamination

A major obstacle to NIRS clinical applications in adults is the presence of extra-cerebral tissues (scalp, skull and CSF) within the region interrogated by NIRS probes. For CBF

measurements, the measured ICG tissue concentration curve is comprised of both cerebral and non-cerebral components that are highly correlated. Using tracer kinetic models to recover CBF from a contaminated curve would result in an underestimation of CBF (Elliott et al., 2010; Gora et al., 2002; Owen-Reece et al., 1996). Solutions to overcoming this challenge have been proposed, including more advanced instrumentation as well as analytical approaches, with the main goal of increasing sensitivity to cerebral components.

The presence of the extra-cerebral component in the measured signal makes the analytical problem underdetermined when using a single-channel continuous-wave configuration. To differentiate between signal arising from cerebral tissue and extracerebral contamination, more information about the light-tissue interaction is necessary. Several instrumentation approaches have emerged which provide additional information and include multi-distance (also known as spatially resolved), time-resolved and frequency-domain approaches. The additional data provided by these techniques facilitate the removal of extracerebral contamination by further constraining the system of equations which describe the change in light propagation due to the inflow of tracer.

In depth-resolved NIRS, multiple detectors are used to simultaneously measure the optical signal at difference source-detector distances (Hongo et al., 1995; Pucci et al., 2010). This approach is based on the principle that the penetration depth of light increases with source-detector distance. Therefore, the distance that light travels in each tissue type depends on both the geometry of the tissue layers as well as the source-detector distance. Measuring the NIR signal at a variety of source-detector distances for the same tissue structure provides a means of algebraically isolating information from the cerebral tissue. The main limitation of this approach is that the mean partial pathlength of light for a given source-detector distance is unknown and must therefore be determined using mathematical modeling, spectral information, anatomical priors, or a combination of these. Recently, a depth-resolved NIRS method that incorporated CT imaging data into a light propagation model has been validated (Elliott et al., 2010). The determination of mean partial pathlengths using this approach allowed the removal of extracerebral contamination, and the recovered CBF values were in good agreement with independent measurements obtained with CT perfusion. Several other multi-distance techniques have been proposed, using time-resolved or frequency-domain methods to provide additional information (Liebert et al., 2004; Steinbrink et al., 2006).

An effective way to isolate the deeper cerebral component of the signal is to collect information about individual photons, mainly the time required to travel from the source fibre, through the tissue, to the detector. This “time-of-flight” is a function of the optical properties of the tissue and the distribution of times-of-flight for a sample of photons can be considered as a unique signature of the tissue geometry and type. Similar to the depth-resolved approach, photons with late arrival times are more likely to have propagated into cerebral tissue, but unlike in the case of depth-resolved NIRS, the relationship is not straight-forward. Instead, it is necessary to mathematically model the time-of-flight distribution (Kienle et al., 1998; Wang et al., 1995) to determine the optical properties of each medium. Changes in light attenuation recovered from this modeling can be converted to ICG concentration and deconvolved to yield CBF (Diop et al., 2010).

In a similar way, when a frequency-modulated light signal is introduced into a tissue, the amplitude and phase components of the detected light depend on the tissue geometry and optical properties (Choi et al., 2004). In theory, the same time-of-flight information collected using time-resolved NIRS is contained in frequency-domain measurements. Since most analytical models employed in time-resolved analysis have solutions for the frequency domain as well, the two techniques are theoretically equivalent.

When using the methods discussed above, a certain amount of prior information is necessary to properly analyze the measured data. These priors include information regarding the geometry and type of tissue being interrogated, the optical properties of the tissues, and the placement and efficiency of the optical probes. Because the determination of these priors can often be challenging in a clinical environment, it is common to make a limited number of assumptions and simplifications. However, the number and quality of priors will usually affect the accuracy of the CBF measurement, making it necessary to carefully consider this trade-off.

Perhaps the most important prior from a clinical perspective is anatomical information pertaining to the thickness and shape of the extracerebral layers, and must be incorporated into light propagation models. In the absence of this information, the head is treated either as a homogenous medium or as a simple two-layered structure with a top layer thickness based on the population average. Measurements of CBF determined using either of these two assumptions have been shown to be inaccurate under most clinical situations (Gora et al., 2002; Schytz et al., 2009). The accuracy of CBF measurements can be improved when the total thickness of the extra-cerebral layer, or preferably, the individual thicknesses of the scalp, skull and CSF layers are known (Elliott et al., 2010). Recent studies have also suggested that incorporating an imaging dataset from CT or MRI may further increase the accuracy of the measurements (Dehaes et al., 2011), but this has not yet been demonstrated experimentally.

An alternative approach to the quantitative methods discussed above is to use semi-quantitative comparisons to assess the relative change in blood flow as a function of time, or the relative difference in blood flow between different areas on the head (Liebert et al., 2005). While these techniques cannot quantify CBF, they may be effective in specific clinical applications even if no priors are available. Recently, Steinkeller et al. demonstrated the use of a semi-quantitative time-resolved NIRS technique to monitor cerebral perfusion in acute ischemic stroke patients (Steinkellner et al., 2010). In this study, NIRS measurements were acquired over both hemispheres following the injection of tracer, and the time-to-peak, or time between first appearance of tracer and the peak concentration of tracer, was determined. In all patients, a larger time-to-peak was observed in the affected hemisphere, when compared to the normal hemisphere.

7. Conclusion

Near-infrared spectroscopy is already an accepted and widely used monitoring tool for the clinical management of patients since the ubiquitous pulse oximeter is in fact a NIRS instrument. Although NIRS instruments are in general relatively simple, analyzing the measured signal is not always straightforward. For this reason, interpreting NIRS data remains one of the major obstacles preventing its wide spread and routine clinical use. To overcome this challenge, better analytical tools need to be developed as well as stronger collaboration between researchers and clinicians. Another major problem with NIRS is the lack of widely accepted standards. Efforts are being made to solve this issue with multiple research groups working together to develop calibrated tissue mimicking phantoms.

8. Acknowledgment

The authors would like to thank the financial support of the Canadian Institutes of Health Research (CIHR), the Natural Sciences and Engineering Research Council of Canada (NSERC), the Canada Foundation for Innovation, Heart and Stroke Foundation Ontario and the Ontario Neurotrauma Foundation.

9. References

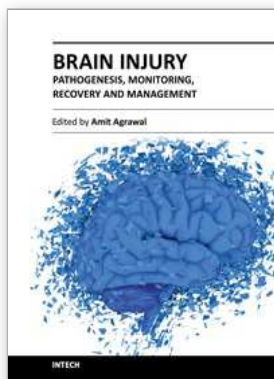
- Al-Rawi, P. G. & Kirkpatrick, P. J. (2006): Tissue oxygen index: thresholds for cerebral ischemia using near-infrared spectroscopy. *Stroke*, Vol.37.11: 2720
- al Naqeeb, N., Edwards, A. D., Cowan, F. M. & Azzopardi, D. (1999): Assessment of neonatal encephalopathy by amplitude-integrated electroencephalography. *Pediatrics*, Vol.103.6 Pt 1: 1263
- Asgeirsson, B., Grande, P. O. & Nordstrom, C. H. (1994): A new therapy of post-trauma brain oedema based on haemodynamic principles for brain volume regulation. *Intensive Care Med*, Vol.20.4: 260
- Benaron, D. A., Kurth, C. D., Steven, J. M., Delivoria-Papadopoulos, M. & Chance, B. (1995): Transcranial optical path length in infants by near-infrared phase-shift spectroscopy. *J Clin Monit*, Vol.11.2: 109
- Blankenberg, F. G., Loh, N. N., Norbash, A. M., Craychee, J. A., Spielman, D. M., Person, B. L., Berg, C. A. & Enzmann, D. R. (1997): Impaired cerebrovascular autoregulation after hypoxic-ischemic injury in extremely low-birth-weight neonates: detection with power and pulsed wave Doppler US. *Radiology*, Vol.205.2: 563
- Bolognese, P., Miller, J. I., Heger, I. M. & Milhorat, T. H. (1993): Laser-Doppler flowmetry in neurosurgery. *J Neurosurg Anesthesiol*, Vol.5.3: 151
- Brady, K. M., Lee, J. K., Kibler, K. K., Easley, R. B., Koehler, R. C. & Shaffner, D. H. (2008): Continuous measurement of autoregulation by spontaneous fluctuations in cerebral perfusion pressure: comparison of 3 methods. *Stroke*, Vol.39.9: 2531
- Bratton, S. L., Chestnut, R. M., Ghajar, J., McConnell Hammond, F. F., Harris, O. A., Hartl, R., Manley, G. T., Nemecek, A., Newell, D. W., Rosenthal, G., Schouten, J., Shutter, L., Timmons, S. D., Ullman, J. S., Videtta, W., Wilberger, J. E. & Wright, D. W. (2007a): Guidelines for the management of severe traumatic brain injury. IX. Cerebral perfusion thresholds. *J Neurotrauma*, Vol.24 Suppl 1S59
- Bratton, S. L., Chestnut, R. M., Ghajar, J., McConnell Hammond, F. F., Harris, O. A., Hartl, R., Manley, G. T., Nemecek, A., Newell, D. W., Rosenthal, G., Schouten, J., Shutter, L., Timmons, S. D., Ullman, J. S., Videtta, W., Wilberger, J. E. & Wright, D. W. (2007b): Guidelines for the management of severe traumatic brain injury. VIII. Intracranial pressure thresholds. *J Neurotrauma*, Vol.24 Suppl 1S55
- Brown, D. W., Hadway, J. & Lee, T. Y. (2003): Near-infrared spectroscopy measurement of oxygen extraction fraction and cerebral metabolic rate of oxygen in newborn piglets. *Pediatr Res*, Vol.54.6: 861
- Brown, D. W., Picot, P. A., Naeni, J. G., Springett, R., Delpy, D. T. & Lee, T. Y. (2002): Quantitative near infrared spectroscopy measurement of cerebral hemodynamics in newborn piglets. *Pediatr Res*, Vol.51.5: 564
- Cady, E. B. (2001): Magnetic resonance spectroscopy in neonatal hypoxic-ischaemic insults. *Childs Nerv Syst*, Vol.17.3: 145
- Carter, B. S., McNabb, F. & Merenstein, G. B. (1998): Prospective validation of a scoring system for predicting neonatal morbidity after acute perinatal asphyxia. *J Pediatr*, Vol.132.4: 619
- Chaudhari, T. & McGuire, W. (2008): Allopurinol for preventing mortality and morbidity in newborn infants with suspected hypoxic-ischaemic encephalopathy. *Cochrane Database Syst Rev*.2: CD006817
- Choi, J., Wolf, M., Toronov, V., Wolf, U., Polzonetti, C., Hueber, D., Safonova, L. P., Gupta, R., Michalos, A., Mantulin, W. & Gratton, E. (2004): Noninvasive determination of the

- optical properties of adult brain: near-infrared spectroscopy approach. *J Biomed Opt*, Vol.9.1: 221
- Coles, J. P., Steiner, L. A., Johnston, A. J., Fryer, T. D., Coleman, M. R., Smielewski, P., Chatfield, D. A., Aigbirhio, F., Williams, G. B., Boniface, S., Rice, K., Clark, J. C., Pickard, J. D. & Menon, D. K. (2004): Does induced hypertension reduce cerebral ischaemia within the traumatized human brain? *Brain*, Vol.127.Pt 11: 2479
- Cope, M. (1991): *The application of near infrared spectroscopy to non invasive monitoring of cerebral oxygenation in the newborn infant*. Ph. D., University College London, London, U.K.
- Cremer, O. L. (2008): Does ICP monitoring make a difference in neurocritical care? *Eur J Anaesthesiol Suppl*, Vol.4287
- Dehaes, M., Grant, P. E., Sliva, D. D., Roche-Labarbe, N., Pienaar, R., Boas, D. A., Franceschini, M. A. & Selb, J. (2011): Assessment of the frequency-domain multi-distance method to evaluate the brain optical properties: Monte Carlo simulations from neonate to adult. *Biomed Opt Express*, Vol.2.3: 552
- Delpy, D. T., Cope, M., van der Zee, P., Arridge, S., Wray, S. & Wyatt, J. (1988): Estimation of optical pathlength through tissue from direct time of flight measurement. *Phys Med Biol*, Vol.33.12: 1433
- DeWitt, D. S. & Prough, D. S. (2003): Traumatic cerebral vascular injury: the effects of concussive brain injury on the cerebral vasculature. *J Neurotrauma*, Vol.20.9: 795
- Diop, M., Elliott, J. T., Tichauer, K. M., Lee, T. Y. & St Lawrence, K. (2009): A broadband continuous-wave multichannel near-infrared system for measuring regional cerebral blood flow and oxygen consumption in newborn piglets. *Rev Sci Instrum*, Vol.80.5: 054302
- Diop, M., Tichauer, K. M., Elliott, J. T., Migueis, M., Lee, T. Y. & St Lawrence, K. (2010): Comparison of time-resolved and continuous-wave near-infrared techniques for measuring cerebral blood flow in piglets. *J Biomed Opt*, Vol.15.5: 057004
- Edwards, A. D., Wyatt, J. S., Richardson, C., Delpy, D. T., Cope, M. & Reynolds, E. O. (1988): Cotside measurement of cerebral blood flow in ill newborn infants by near infrared spectroscopy. *Lancet*, Vol.2.8614: 770
- Eicher, D. J., Wagner, C. L., Katikaneni, L. P., Hulsey, T. C., Bass, W. T., Kaufman, D. A., Horgan, M. J., Languani, S., Bhatia, J. J., Givelichian, L. M., Sankaran, K. & Yager, J. Y. (2005a): Moderate hypothermia in neonatal encephalopathy: efficacy outcomes. *Pediatr Neurol*, Vol.32.1: 11
- Eicher, D. J., Wagner, C. L., Katikaneni, L. P., Hulsey, T. C., Bass, W. T., Kaufman, D. A., Horgan, M. J., Languani, S., Bhatia, J. J., Givelichian, L. M., Sankaran, K. & Yager, J. Y. (2005b): Moderate hypothermia in neonatal encephalopathy: safety outcomes. *Pediatr Neurol*, Vol.32.1: 18
- Elliott, J. T., Diop, M., Tichauer, K. M., Lee, T. Y. & St Lawrence, K. (2010): Quantitative measurement of cerebral blood flow in a juvenile porcine model by depth-resolved near-infrared spectroscopy. *J Biomed Opt*, Vol.15.3: 037014
- Gallagher, C. N., Hutchinson, P. J. & Pickard, J. D. (2007): Neuroimaging in trauma. *Curr Opin Neurol*, Vol.20.4: 403
- Gluckman, P. D., Wyatt, J. S., Azzopardi, D., Ballard, R., Edwards, A. D., Ferriero, D. M., Polin, R. A., Robertson, C. M., Thoresen, M., Whitelaw, A. & Gunn, A. J. (2005): Selective head cooling with mild systemic hypothermia after neonatal encephalopathy: multicentre randomised trial. *Lancet*, Vol.365.9460: 663
- Gora, F., Shinde, S., Elwell, C. E., Goldstone, J. C., Cope, M., Delpy, D. T. & Smith, M. (2002): Noninvasive measurement of cerebral blood flow in adults using near-infrared spectroscopy and indocyanine green: a pilot study. *J Neurosurg Anesthesiol*, Vol.14.3: 218

- Gowda, N. K., Agrawal, D., Bal, C., Chandrashekar, N., Tripathi, M., Bandopadhyaya, G. P., Malhotra, A. & Mahapatra, A. K. (2006): Technetium Tc-99m ethyl cysteinate dimer brain single-photon emission CT in mild traumatic brain injury: a prospective study. *AJNR Am J Neuroradiol*, Vol.27.2: 447
- Gunn, A. J. & Bennet, L. (2008): Timing of injury in the fetus and neonate. *Curr Opin Obstet Gynecol*, Vol.20.2: 175
- Helmy, A., Vizcaychipi, M. & Gupta, A. K. (2007): Traumatic brain injury: intensive care management. *Br J Anaesth*, Vol.99.1: 32
- Hongo, K., Kobayashi, S., Okudera, H., Hokama, M. & Nakagawa, F. (1995): Noninvasive cerebral optical spectroscopy: depth-resolved measurements of cerebral haemodynamics using indocyanine green. *Neurol Res*, Vol.17.2: 89
- Hope-Ross, M., Yannuzzi, L. A., Gragoudas, E. S., Guyer, D. R., Slakter, J. S., Sorenson, J. A., Krupsky, S., Orlock, D. A. & Puliafito, C. A. (1994): Adverse reactions due to indocyanine green. *Ophthalmology*, Vol.101.3: 529
- Hueber, D. M., Franceschini, M. A., Ma, H. Y., Zhang, Q., Ballesteros, J. R., Fantini, S., Wallace, D., Ntziachristos, V. & Chance, B. (2001): Non-invasive and quantitative near-infrared haemoglobin spectrometry in the piglet brain during hypoxic stress, using a frequency-domain multidistance instrument. *Phys Med Biol*, Vol.46.1: 41
- Jobsis, F. F. (1977): Noninvasive, infrared monitoring of cerebral and myocardial oxygen sufficiency and circulatory parameters. *Science*, Vol.198.4323: 1264
- Kienle, A., Patterson, M. S., Dognitz, N., Bays, R., Wagninures, G. & van den Bergh, H. (1998): Noninvasive Determination of the Optical Properties of Two-Layered Turbid Media. *Appl Opt*, Vol.37.4: 779
- Kirkpatrick, P. J., Smielewski, P., Czosnyka, M. & Pickard, J. D. (1994): Continuous monitoring of cortical perfusion by laser Doppler flowmetry in ventilated patients with head injury. *J Neurol Neurosurg Psychiatry*, Vol.57.11: 1382
- Kusaka, T., Isobe, K., Nagano, K., Okubo, K., Yasuda, S., Kondo, M., Itoh, S., Hirao, K. & Onishi, S. (2002): Quantification of cerebral oxygenation by full-spectrum near-infrared spectroscopy using a two-point method. *Comp Biochem Physiol A Mol Integr Physiol*, Vol.132.1: 121
- Lee, T.-Y. (2002): Functional CT: physiological models. *Trends in Biotechnology*, Vol.20.8: S3
- Liebert, A., Wabnitz, H., Steinbrink, J., Moller, M., Macdonald, R., Rinneberg, H., Villringer, A. & Obrig, H. (2005): Bed-side assessment of cerebral perfusion in stroke patients based on optical monitoring of a dye bolus by time-resolved diffuse reflectance. *Neuroimage*, Vol.24.2: 426
- Liebert, A., Wabnitz, H., Steinbrink, J., Obrig, H., Moller, M., Macdonald, R., Villringer, A. & Rinneberg, H. (2004): Time-resolved multidistance near-infrared spectroscopy of the adult head: intracerebral and extracerebral absorption changes from moments of distribution of times of flight of photons. *Appl Opt*, Vol.43.15: 3037
- Martin, E. & Barkovich, A. J. (1995): Magnetic resonance imaging in perinatal asphyxia. *Arch Dis Child Fetal Neonatal Ed*, Vol.72.1: F62
- Matcher, S. J. & Cooper, C. E. (1994): Absolute quantification of deoxyhaemoglobin concentration in tissue near infrared spectroscopy. *Phys Med Biol*, Vol.39.8: 1295
- Matcher, S. J., Cope, M. & Delpy, D. T. (1994): Use of the water absorption spectrum to quantify tissue chromophore concentration changes in near-infrared spectroscopy. *Phys Med Biol*, Vol.39.1: 177
- Meier, P. & Zierler, K. L. (1954): On the theory of the indicator-dilution method for measurement of blood flow and volume. *J Appl Physiol*, Vol.6.12: 731

- Muller, A. M., Morales, C., Briner, J., Baenziger, O., Duc, G. & Bucher, H. U. (1997): Loss of CO₂ reactivity of cerebral blood flow is associated with severe brain damage in mechanically ventilated very low birth weight infants. *Eur J Paediatr Neurol*, Vol.1.5-6: 157
- Owen-Reece, H., Elwell, C. E., Harkness, W., Goldstone, J., Delpy, D. T., Wyatt, J. S. & Smith, M. (1996): Use of near infrared spectroscopy to estimate cerebral blood flow in conscious and anaesthetized adult subjects. *Br J Anaesth*, Vol.76.1: 43
- Patel, J., Marks, K., Roberts, I., Azzopardi, D. & Edwards, A. D. (1998): Measurement of cerebral blood flow in newborn infants using near infrared spectroscopy with indocyanine green. *Pediatr Res*, Vol.43.1: 34
- Phelps, M. E., Huang, S. C., Hoffman, E. J. & Kuhl, D. E. (1979): Validation of tomographic measurement of cerebral blood volume with C-11-labeled carboxyhemoglobin. *J Nucl Med*, Vol.20.4: 328
- Pucci, O., Toronov, V. & St Lawrence, K. Measurement of the optical properties of a two-layer model of the human head using broadband near-infrared spectroscopy. *Appl Opt*, Vol.49.32: 6324
- Robertson, C. S., Valadka, A. B., Hannay, H. J., Contant, C. F., Gopinath, S. P., Cormio, M., Uzura, M. & Grossman, R. G. (1999): Prevention of secondary ischemic insults after severe head injury. *Crit Care Med*, Vol.27.10: 2086
- Sarkar, S., Barks, J. D. & Donn, S. M. (2008): Should amplitude-integrated electroencephalography be used to identify infants suitable for hypothermic neuroprotection? *J Perinatol*, Vol.28.2: 117
- Schultz, J. E. (1978): Brain Energy Metabolism. Von B. K. Siesjö, John Wiley and Sons, Chichester, New York, Brisbane Toronto, 1978, 607 S., DM 78,65. *Pharmazie in unserer Zeit*, Vol.7.6: 192
- Schytz, H. W., Wienecke, T., Jensen, L. T., Selb, J., Boas, D. A. & Ashina, M. (2009): Changes in cerebral blood flow after acetazolamide: an experimental study comparing near-infrared spectroscopy and SPECT. *Eur J Neurol*, Vol.16.4: 461
- Scremin, O. U., Sonnenschein, R. R. & Rubinstein, E. H. (1982): Cerebrovascular anatomy and blood flow measurements in the rabbit. *J Cereb Blood Flow Metab*, Vol.2.1: 55
- Shankaran, S. (1998): Identification of term infants at risk for neonatal morbidity. *J Pediatr*, Vol.132.4: 571
- Shankaran, S., Lupton, A. R., Ehrenkranz, R. A., Tyson, J. E., McDonald, S. A., Donovan, E. F., Fanaroff, A. A., Poole, W. K., Wright, L. L., Higgins, R. D., Finer, N. N., Carlo, W. A., Duara, S., Oh, W., Cotten, C. M., Stevenson, D. K., Stoll, B. J., Lemons, J. A., Guillet, R. & Jobe, A. H. (2005): Whole-body hypothermia for neonates with hypoxic-ischemic encephalopathy. *N Engl J Med*, Vol.353.15: 1574
- Sioutos, P. J., Orozco, J. A., Carter, L. P., Weinand, M. E., Hamilton, A. J. & Williams, F. C. (1995): Continuous regional cerebral cortical blood flow monitoring in head-injured patients. *Neurosurgery*, Vol.36.5: 943
- Soustiel, J. F., Mahamid, E., Goldsher, D. & Zaaroor, M. (2008): Perfusion-CT for early assessment of traumatic cerebral contusions. *Neuroradiology*, Vol.50.2: 189
- Springett, R., Sakata, Y. & Delpy, D. T. (2001): Precise measurement of cerebral blood flow in newborn piglets from the bolus passage of indocyanine green. *Phys Med Biol*, Vol.46.8: 2209
- Steinbrink, J., Fischer, T., Kuppe, H., Hetzer, R., Uludag, K., Obrig, H. & Kuebler, W. M. (2006): Relevance of depth resolution for cerebral blood flow monitoring by near-infrared spectroscopic bolus tracking during cardiopulmonary bypass. *J Thorac Cardiovasc Surg*, Vol.132.5: 1172

- Steinkellner, O., Gruber, C., Wabnitz, H., Jelzow, A., Steinbrink, J., Fiebach, J. B., Macdonald, R. & Obrig, H. (2010): Optical bedside monitoring of cerebral perfusion: technological and methodological advances applied in a study on acute ischemic stroke. *J Biomed Opt*, Vol.15.6: 061708
- Thavasoathy, M., Broadhead, M., Elwell, C., Peters, M. & Smith, M. (2002): A comparison of cerebral oxygenation as measured by the NIRO 300 and the INVOS 5100 Near-Infrared Spectrophotometers. *Anaesthesia*, Vol.57.10: 999
- Tichauer, K. M., Brown, D. W., Hadway, J., Lee, T. Y. & St Lawrence, K. (2006a): Near-infrared spectroscopy measurements of cerebral blood flow and oxygen consumption following hypoxia-ischemia in newborn piglets. *J Appl Physiol*, Vol.100.3: 850
- Tichauer, K. M., Elliott, J. T., Hadway, J. A., Lee, D. S., Lee, T. Y. & St Lawrence, K. (2010): Using near-infrared spectroscopy to measure cerebral metabolic rate of oxygen under multiple levels of arterial oxygenation in piglets. *J Appl Physiol*, Vol.109.3: 878
- Tichauer, K. M., Elliott, J. T., Hadway, J. A., Lee, T. Y. & St Lawrence, K. (2009): Cerebral metabolic rate of oxygen and amplitude-integrated electroencephalography during early reperfusion after hypoxia-ischemia in piglets. *J Appl Physiol*, Vol.106.5: 1506
- Tichauer, K. M., Hadway, J. A., Lee, T. Y. & St Lawrence, K. (2006b): Measurement of cerebral oxidative metabolism with near-infrared spectroscopy: a validation study. *J Cereb Blood Flow Metab*, Vol.26.5: 722
- Toet, M. C., Hellstrom-Westas, L., Groenendaal, F., Eken, P. & de Vries, L. S. (1999): Amplitude integrated EEG 3 and 6 hours after birth in full term neonates with hypoxic-ischaemic encephalopathy. *Arch Dis Child Fetal Neonatal Ed*, Vol.81.1: F19
- Vajkoczy, P., Horn, P., Bauhuf, C., Munch, E., Hubner, U., Ing, D., Thome, C., Poeckler-Schoeninger, C., Roth, H. & Schmiedek, P. (2001): Effect of intra-arterial papaverine on regional cerebral blood flow in hemodynamically relevant cerebral vasospasm. *Stroke*, Vol.32.2: 498
- Valdueza, J. M., Balzer, J. O., Villringer, A., Vogl, T. J., Kutter, R. & Einhaupl, K. M. (1997): Changes in blood flow velocity and diameter of the middle cerebral artery during hyperventilation: assessment with MR and transcranial Doppler sonography. *AJNR Am J Neuroradiol*, Vol.18.10: 1929
- Wang, L., Jacques, S. L. & Zheng, L. (1995): MCML--Monte Carlo modeling of light transport in multi-layered tissues. *Comput Methods Programs Biomed*, Vol.47.2: 131
- Watzman, H. M., Kurth, C. D., Montenegro, L. M., Rome, J., Steven, J. M. & Nicolson, S. C. (2000): Arterial and venous contributions to near-infrared cerebral oximetry. *Anesthesiology*, Vol.93.4: 947
- Wiedeman, M. P. (1963): Dimensions of blood vessels from distributing artery to collecting vein. *Circ Res*, Vol.12:375
- Wintermark, M., Sesay, M., Barbier, E., Borbely, K., Dillon, W. P., Eastwood, J. D., Glenn, T. C., Grandin, C. B., Pedraza, S., Soustiel, J. F., Nariai, T., Zaharchuk, G., Caille, J. M., Dousset, V. & Yonas, H. (2005): Comparative overview of brain perfusion imaging techniques. *Stroke*, Vol.36.9: e83
- Wright, W. L. (2007): Multimodal monitoring in the ICU: when could it be useful? *J Neurol Sci*, Vol.261.1-2: 10
- Yoshitani, K., Kawaguchi, M., Tatsumi, K., Kitaguchi, K. & Furuya, H. (2002): A comparison of the INVOS 4100 and the NIRO 300 near-infrared spectrophotometers. *Anesth Analg*, Vol.94.3: 586



Brain Injury - Pathogenesis, Monitoring, Recovery and Management

Edited by Prof. Amit Agrawal

ISBN 978-953-51-0265-6

Hard cover, 522 pages

Publisher InTech

Published online 23, March, 2012

Published in print edition March, 2012

The present two volume book "Brain Injury" is distinctive in its presentation and includes a wealth of updated information on many aspects in the field of brain injury. The Book is devoted to the pathogenesis of brain injury, concepts in cerebral blood flow and metabolism, investigative approaches and monitoring of brain injured, different protective mechanisms and recovery and management approach to these individuals, functional and endocrine aspects of brain injuries, approaches to rehabilitation of brain injured and preventive aspects of traumatic brain injuries. The collective contribution from experts in brain injury research area would be successfully conveyed to the readers and readers will find this book to be a valuable guide to further develop their understanding about brain injury.

How to reference

In order to correctly reference this scholarly work, feel free to copy and paste the following:

Mamadou Diop, Jonathan T. Elliott, Ting-Yim Lee and Keith St. Lawrence (2012). Towards Non-Invasive Bedside Monitoring of Cerebral Blood Flow and Oxygen Metabolism in Brain-Injured Patients with Near-Infrared Spectroscopy, Brain Injury - Pathogenesis, Monitoring, Recovery and Management, Prof. Amit Agrawal (Ed.), ISBN: 978-953-51-0265-6, InTech, Available from: <http://www.intechopen.com/books/brain-injury-pathogenesis-monitoring-recovery-and-management/towards-non-invasive-bedside-monitoring-of-cerebral-blood-flow-and-oxygen-metabolism-in-brain-injure>

INTECH

open science | open minds

InTech Europe

University Campus STeP Ri
Slavka Krautzeka 83/A
51000 Rijeka, Croatia
Phone: +385 (51) 770 447
Fax: +385 (51) 686 166
www.intechopen.com

InTech China

Unit 405, Office Block, Hotel Equatorial Shanghai
No.65, Yan An Road (West), Shanghai, 200040, China
中国上海市延安西路65号上海国际贵都大饭店办公楼405单元
Phone: +86-21-62489820
Fax: +86-21-62489821

© 2012 The Author(s). Licensee IntechOpen. This is an open access article distributed under the terms of the [Creative Commons Attribution 3.0 License](#), which permits unrestricted use, distribution, and reproduction in any medium, provided the original work is properly cited.