

Cryopreservation of Embryos from Model Animals and Human

Wai Hung Tsang and King L. Chow

*Division of Life Science, The Hong Kong University of Science and Technology
Hong Kong*

1. Introduction

Diploidic germplasms such as embryos, compared to haploidic gametes, are theoretically a better choice for preservation of an animal species. However, there are significant challenges in cryopreservation of multicellular materials due to their size and physical complexity which affect the permeation of cryoprotectants and water, sensitivity to chilling and toxicity of cryoprotectants. While cryopreservation technologies are well developed and found feasible in embryos/larvae of some species, embryos of other species such as zebrafish failed to be cryopreserved. In addition, cryopreservation in many other emerging model organisms have not been developed at all. Hence, the limited cryopreservation technology has become a bottleneck in the development of various research areas, especially those relying on molecular genetics of emerging model organisms. Thorough understanding of the embryonic development and critical stages tolerant to cryopreservation needs to be identified so as to facilitate expansion of model systems available for specific biological and experimental interrogations.

1.2 Traditional and emerging animal models

Classical animal models, including species that represent major branches of the tree of life, are being used in biological studies. They include *Caenorhabditis elegans* (a nematode), *Drosophila melanogaster* (an arthropod), *Danio rerio* (a teleost fish), *Gallus gallus* (an avian), and *Mus musculus* (a mammal). They have been widely used in scientific research, primarily due to the ease of maintenance and specific features that facilitate experimental manipulations, genetic study and observation. As knowledge from these models has accumulated over the years, they offer important insights into the overall organization and functional composition of the general form of life. However, a comprehensive picture of variations of mechanistic innovation in the vast diversity of species in the Animal Kingdom is not available. Greater understanding of these organisms in different branches of the phylogenetic tree is in demand, in order to fill the gaps of existing findings. To meet this demand, more model organisms are emerging to provide unique perspectives of animal development and specific biological functions not yet uncovered in the study of other classical models. Emerging animal models include the brine shrimp *Artemia sinica*, starlet sea anemone *Nematostella vectensis*, non-parasitic flatworm *Planaria*, amphioxus *Branchiostoma floridae*, sea squirt *Ciona intestinalis*, sea lamprey *Petromyzon marinus*, Japanese

quail *Coturnix japonica*, opossum *Monodelphis domestica* and marmoset *Callithrix jacchus*, etc. For example, sea lampreys are cyclostomes in a basal group of vertebrates. Comparative studies on lamprey and jawed fish, e.g., zebrafish, reveal key elements guiding jaw evolution. Characteristics shared between lamprey and other vertebrates but absent in non-vertebrate chordates include the presence of neural crest cells and a jaw. Comparative studies can direct us to the origins of these features. Therefore, study of these emerging model organisms does offer a unique approach to understand the relatedness of species in the living world. Another example illustrating the importance of new model systems in studying the evolution of body plan is shown in Figure 1 (Kosik, 2009).

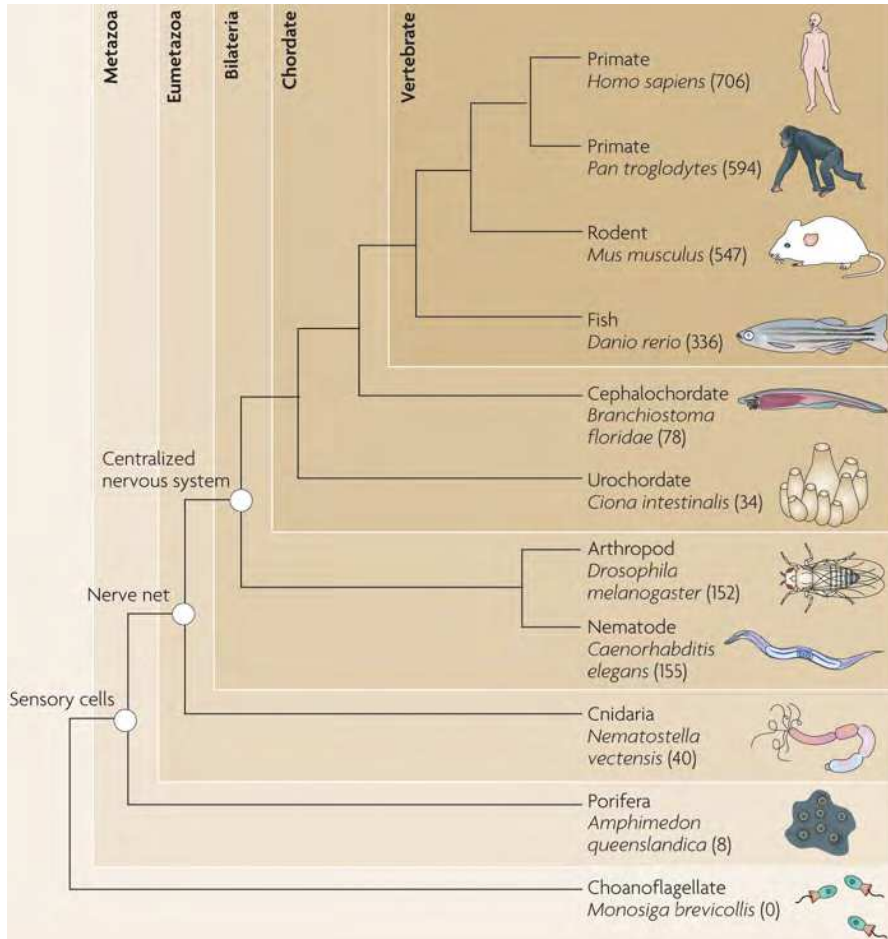


Fig. 1. The identification of miRNAs in different metazoan lineages revealed that the number of microRNAs (in brackets) is generally correlated with the complexity of body plan. Comparative studies involving “non-classical” model organisms further suggested a possible role of new microRNAs in evolutionary innovation. The figure is reproduced from Kosik (2009) with permission from the publisher.

1.3 Needs for cryopreservation

1.3.1 Archives of genetic resources

Modern evolutionary developmental biology and molecular genetic studies on model organisms largely rely on manipulation of tissues and genomes. The advancement of technologies for genomic modification of these model organisms, in turn, affects the popularity of usage of particular model organisms. Eventually, this leads to a rapid increase in the number of transgenic/mutant strains in each popular species.

For the *Caenorhabditis* Genetic Center, mutants had been deposited by individual research groups and various genome wide mutagenesis projects such as the National BioResource Project for The Nematode and *Caenorhabditis elegans* Gene Knockout Consortium. In the National BioResource Project, random mutagenesis was performed for nematodes with UV in the presence of trimethylpsoralen. Affected genes are identified by screening with a gene-specific primer set (Gengyo-Ando & Mitani, 2000). As of April 2010, about 4,400 mutants were available and mutants of some 2800 genes were being screened. Without convenient procedures for cryopreserving these species, maintenance of these strains is a heavy burden to these centers, and in other laboratories using these mutants extensively for their studies. On the other hand, passaging parasitic nematode models in plants and in donor animals, e.g., *Cooperia oncophora* in the cattle host (Borgsteede & Hendriks, 1979), is particularly labor intensive and costly and poses risk of cross contamination.

At Bloomington *Drosophila* Stock Center, more than 30,000 strains of *Drosophila* are currently present. Preparations are in progress to expand the facility to hold up to 70,000 stocks in order to meet the needs of stocking transgenic strains to be generated for a wide range of studies, including those made by tissue specific knocking-out of genes for the modeling of human diseases. In Flybase, 112,278 fly stocks were recorded for 2011 (Flybase FB2011_07 Release Notes).

In The Jackson Laboratory, over 4,000 mouse strains have been deposited and are available to the public. At the Medical Research Council Harwell and at The European Mouse Mutant Archive, over 1300 and 2200 mouse strains are stocked respectively (Eppig & Strivens, 1999). In various mouse stock centers in Japan, including BioResources Center (Riken) and Trans Genic Inc., about 8,000 mouse strains are stocked. More than 16,000 of the 24,954 protein coding genes in the mouse genome have been modified by the International Knockout Mouse Consortium (IKMC), as conditional knockout alleles in embryonic stem cells. So far, more than 1,000 mutant mice, each containing one of these conditional knockout alleles, are made available to the community. The ultimate goal is to generate different targeted alleles in embryonic stem cells (for targeted mice generation) or in targeted mice, to be available to the research community worldwide (Skarnes et al., 2011). On the other hand, about 1,200 zebrafish lines and about 100 *Xenopus* lines have been archived in the Zebrafish International Resource Center and European *Xenopus* Resource Centers, respectively.

Since keeping live animals is costly in terms of requirements of space, consumables and manpower, strains not being used need to be cryopreserved to reduce the running cost. It is, therefore, a very important technology that keeps various genome-wide knockout consortia affordable to average research laboratories.

1.3.2 Genetic stability control

The continuous passing of live animals in a small population may lead animal strains to accumulate spontaneous mutations and undergo genetic drift. In mouse, as an example of a lower mutation rate because of its relatively long life cycle, about 0.4 mutations are accumulated in each genome in each generation (Drake et al., 1998). Using this estimation, and assuming there are four generations per year, about ten mutations are accumulated in each descendent mouse diploid genome every 6.25 years (Tsang & Chow, 2010). After four years of sibling intercrosses, there is a 90% probability that more than one mutation can be fixed in a particular mouse line (Stevens et al., 2007). To circumvent this problem, the Jackson Laboratory (Bar Harbor, Maine, USA) adopted the Genetic Stability Program to refresh some mouse colonies with cryopreserved embryos once every five generations. This strategy aims at wiping out spontaneous mutations accumulated over time to ensure consistency of the mouse genome composition.

1.3.3 Genetic diversity maintenance

Maintaining genetic stability and diversity of wild parasitic nematodes collection is vital for research on parasite-host interactions, drug resistance and their applications. For example, prolonged passage of insecticidal nematodes (i.e. entomopathogenic nematodes) can cause a reduction of traits beneficial to pest control (Shapiro et al., 1996; Stuart & Gaugler, 1996; Wang & Grewal, 2002). Three continuous passages of *Galleria mellonella in vitro* resulted in a significant reduction in reproductive potential, and attenuated tolerance to heat, UV and desiccation (Wang & Grewal, 2002). These observations suggest that a selective pressure had been exerted on an isolated population that experienced continuous passages. The original genetic diversity in an isolated population will thus be largely reduced if cryopreservation is not practiced immediately after collection, before experimental analysis is performed.

1.3.4 Logistic advancement on assisted reproduction technologies

A traditional human *in vitro* fertilization cycle involves hormone induced ovarian stimulation for oocyte retrieval, *in vitro* fertilization, culture of embryos to blastocyst, selection of embryos and transfer of embryos into a recipient in an uninterrupted program. Surplus embryos are discarded. If the first pregnancy failed or another pregnancy is desired, the whole cycle has to be started again. Cryopreserving surplus embryos from the first round of the program can now be a backup for the second or more rounds of pregnancy. It can be done simply by transferring the thawed embryos to the recipients when the endometrial conditions are ready (Parriego et al., 2007).

In addition, for preimplantation genetic diagnosis programs, embryos must be transferred back to the mother at or younger than day-6 blastocysts, and so biopsies for prenatal diagnosis must be taken at the latest at day-6. More genetic materials (i.e. blastomeres or trophoblastic cells) can be obtained if the biopsy is performed later. However, accompanied shortcomings will be less time for genetic tests to be performed (Manipalviratn et al., 2009).

Cryopreservation of biopsied embryos can eliminate such conflicts between the quantity of biopsy material and the quality of genetic tests (as a function of available time; Figure 2). It has been demonstrated recently on mouse and then human embryos that biopsied embryos at various stages can survive cryopreservation well (Krzyminska & O'Neill, 1991; Wilton et al., 1989; Liu et al., 1993; Snabes et al., 1993; Zhang et al., 2009; Keskinetepe et al., 2009).

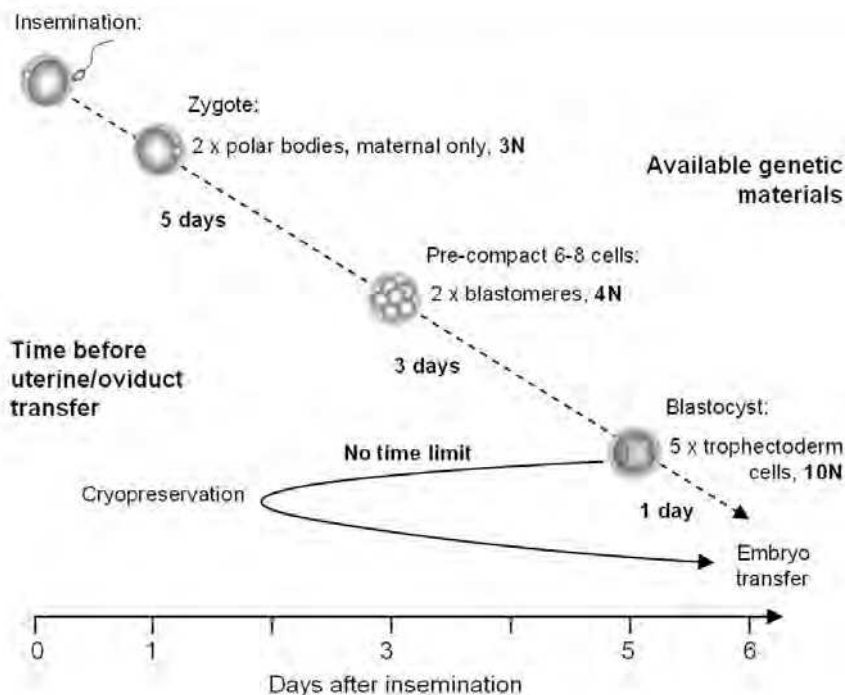


Fig. 2. Role of cryopreservation in assisted reproduction technology. Conflict between the time allowed for genetic diagnostic tests and the amount of genetic materials available (represented by the numbers of haploid genomes, N) from biopsies at different embryonic stages exists in a continuous pre-implantation genetic diagnosis program (dashed arrow). The release of the time constraint by a cryopreservation cycle after blastocyst biopsy is denoted by the solid arrow.

2. Cryopreservation of mammalian preimplantation embryos

2.1 Mammalian pre-implantation embryos at different stages

The mammalian zygote (Figure 3D) is formed by fertilization of the oocyte by spermatozoa, normally in the oviduct. With advancement of the embryo culture technology, fertilization can be initiated outside the body (i.e. *in vitro* fertilization). The embryonic development continues up to hatched blastocysts, i.e. maximum of 4 days in mouse and 6 days in human, without compromising the development of the embryos after they are transferred into the recipient's uterus/oviduct. The preimplantation stage embryo is composed of a single cell or multiple blastomeres surrounded by an outer membrane called the zona pellucida, glycoprotein layer of a thickness of about 6 μ m in mouse and 8 μ m in human. The embryos have an outer diameter of about 0.10 mm in mouse and 0.12 mm in human. The volume enclosed by the mouse zona pellucida is limited to about 200 μ l and the diameter of the

cellular part of a mouse zygote is about $85\mu\text{m}$ (Zernicka-Goetz et al., 1997). In the presence of the perivitelline space, the cellular component is still in close contact with the zona pellucida, and is subjected to the immediate influence by the external medium due to the high permeability of the zona pellucida. The mouse embryo reaches two-cell stage and eight-cell stage at day 2 (dpc 1.5) and day 3 (dpc 2.5), respectively, after fertilization. Compaction usually occurs at day 3, causing a tight cell-cell association between the eight blastomeres to form a compact morula. At day 4 (dpc3.5), a blastocoel is evidenced as a cavity accumulated with fluid to form the blastocyst. The blastocoel expansion is limited by the non-growing zona pellucida. The blastocyst is composed of an embryonic inner cell mass and an extraembryonic trophoblast which immediately surrounds the expanding blastocoel. At day 4, the blastocyst hatches from a breach in the zona pellucida and attaches onto the endometrium for further development.

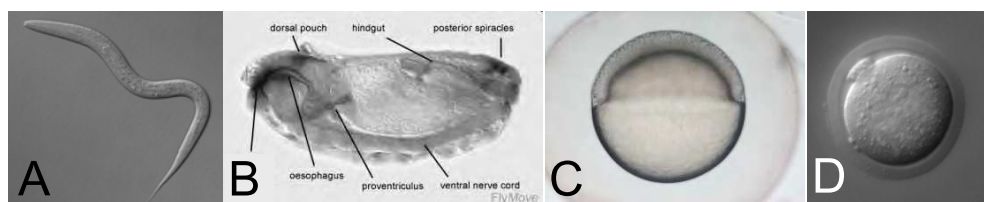


Fig. 3. Embryos and larva of model organisms to be cryopreserved. A, L1 stage larva of *C. elegans*; B, stage 15 (11-13hours) embryo of *Drosophila* (Weigmann et al., 2003); C, zebrafish at 50% epipoly; D, mouse embryo at zygote stage.

2.2 Cryoprotectant permeability of mammalian embryos

Prevention of ice formation by cryoprotectants is the key principle of protecting embryos from damage at cryogenic temperatures. To prevent intracellular ice formation, cryoprotectant molecules must penetrate the cells to exert intracellular cryoprotecting function. By measuring the changes in the volume of embryos immersed in cryoprotectant solutions (Emiliani et al., 2000), permeability of different cryoprotectant molecules at different developmental stages of preimplantation mouse embryos were compared (Table 1).

Embryos of different developmental stages show a differential permeating response to glycerol. The glycerol permeates compact morulae effectively and pre-compact 8-cell morulae moderately. One-cell embryos, 2-cell embryos and oocytes are virtually impermeable to glycerol. The highest permeability of embryos to cryoprotectant among all combinations is on compact morula to ethylene glycol. Acetamide also permeates at a relatively high degree in mouse 8-cell morulae but its permeability decreases dramatically in embryos at earlier developmental stages (Pedro et al., 2005). In sheep morula, ethylene glycol permeates faster than propylene glycol, dimethyl sulfoxide (DMSO) and glycerol (Songsasen et al., 1995). DMSO, on the other hand, shows moderate permeability on embryos at different preimplantation stages, with little difference. Being the most permeating cryoprotectants on 1-cell embryos and 2-cell embryos, propylene glycol permeates better than ethylene glycol. In general, there is a trend of increased permeability of the membrane towards various cryoprotectants when embryos develop (Mazur & Schneider, 1986; Pedro et al., 2005).

The findings indicate a dynamic change in permeability of cell membrane to different cryoprotectants during development. This permeability change does not correlate with the molecular size of the cryoprotectants. In addition, the dynamic changes in cryoprotectant permeability do not seem to be caused by the increase in the total surface area of the embryos. The mouse 8-cell embryos undergo compaction at late day 4, thus decreasing the total surface area drastically, but it is best penetrated at least by ethylene glycol, compared with 1-, 2- and pre-compacted 8-cell embryos (Pedro et al., 2005), which have a higher surface area to volume ratios. Altogether, these findings support the notion that permeability is a dynamic physiological change related to the cellular differentiation state, not a simple passive mechanism dictated by the physical size and surface area. Understanding the changes of permeability of embryos to cryoprotectants at the molecular level may help further develop the use of cryopreservation technologies on mammalian embryos and, more importantly, on other organisms that cannot be cryopreserved yet.

Cryoprotectants		Permeability to different mouse embryo			
Common name	Molecular property	1-cell	2-cell	Pre-compact morula (8-cell)	Compact morula (8-cell)
Acetamide	Amide, MW=59	Moderate	Moderate	High	High
Ethylene glycol	Polyhydric alcohol, MW=62.1	Moderate	Moderate	High	High
Propylene glycol	Polyhydric alcohol, MW=76.1	High	High	High	High
DMSO	Organosulfur, MW=78.1	High	High	High	High
Glycerol	Polyol, MW=92	Impermeable	Impermeable	Moderate	High

Table 1. Permeability of various common cryoprotectants to mouse preimplantation embryos (Information derived from Pedro et al., 2005)

2.3 Cryoprotectant toxicity to mammalian embryos

The higher the concentration of cryoprotecting agent is in a solution, the lower is the likelihood water crystals would be formed in the solution in a rapid-cooling process. However, most cryoprotecting molecules are toxic to embryos with toxicity positively correlating to their concentrations and the exposure time. When choosing the appropriate cryoprotectants, toxicity must be considered. Among five common permeating cryoprotecting agents to be tested, toxicity was determined to be dimethylformamide > erythritol > DMSO > glycerol and ethylene glycol on mouse morulae (Kasai et al., 1981). By electron probe microanalysis, Pogorelov et al. (2006 & 2007a) detected a dramatic decrease in intracellular potassium and sodium content in two-cell embryos treated with procedures mimicking vitrification in ethylene glycol, demonstrating a potential stress exerted on the

embryos. When the mouse morulae were stored in 1.5M ethylene glycol or glycerol for 6 hours, the majority (>75%) of the embryos retained the capacity to develop into expanded blastocysts (Kasai et al., 1981). To minimize the toxic effect of the cryoprotecting solution to the embryos while retaining the cryoprotecting function, a mixture of two or more cryoprotecting agents could be used to decrease the relative concentration of each chemical. Macromolecules such as polyethylene glycol, ficoll and polyvinylpyrrolidone, which increase the viscosity of a solution, thus slowing down water molecules associating to form ice crystals when cooling, can also lower the concentration of cryoprotecting agents to be used in vitrification.

2.4 Osmotic flows in cryopreserving mammalian embryos

2.4.1 Slow-cooling

In a general slow-cooling procedure, embryos are immersed into permeating cryoprotectants. Intracellular water leaves the cells by osmosis and re-enters the cells together with the permeating cryoprotectants by diffusion. A temporal osmotic equilibrium state is acquired at the end. A 1-2M permeating cryoprotecting agent(s) is often used in slow-cooling. To cryopreserve the embryos, embryos and the surrounding freezing medium are loaded into a plastic straw and subjected to cooling to a temperature slightly lower than the freezing point, i.e. at about -7°C . Controlled ice nucleation is initiated by touching the straw with a cooler surface (e.g., a pair of forceps) to initiate the growth of ice inside the straw. The embryos themselves remain unfrozen but supercooled. The removal of water from the solution by the growing ice crystals increases the solute concentration of the extracellular medium. By osmosis, the intercellular water leaves the cells, resulting in an increase of cryoprotectant concentration in the cells. The subsequent slow cooling further dehydrates the embryos and concentrates the cryoprotectant in the cells to promote intracellular solidification, without intracellular ice formation, at a sufficiently low temperature. If the cooling is too fast, it leads to intracellular ice formation because the intracellular solute has not yet achieved a sufficiently high concentration. Too slow a cooling rate causes cells' death due to the prolonged exposure to hypertonic conditions. The cooling rate must be carefully controlled for each embryonic stage of each species because the permeability of cell membranes, and thus the hydrodynamics, of different samples, can be different.

2.4.2 Vitrification

In cryopreservation by vitrification (or rapid-cooling), equilibration of cryoprotectants in the embryos and the cryoprotecting medium are not required. Embryos are first permeated by cryoprotecting agents at a low concentration and then immersed in a moderately high concentration (4M or above) of the same cryoprotecting agent, sometimes together with non-permeating cryoprotectants such as 0.5M sucrose. In the presence of the non-permeating cryoprotectants, the embryos shrink osmotically, thus further increasing concentration of intracellular cryoprotectants. The high concentration of cryoprotecting agents in the medium prevents efflux of intracellular cryoprotecting agents by diffusion (Figure 4). The embryos are then loaded into a container and are rapidly cooled to solidify the embryos without the formation of ice crystals (Rall, 1987). Mathematical modelings such as the relativistic permeability approach is able to simulate the osmotic curve in these

processes to facilitate the optimization of vitrification protocols in future (Katkov and Pogorelov, 2007).

2.5 The success of cryopreservation on mammalian embryos

The first mammalian embryo that survived cryopreservation was the mouse embryo 40 years ago by slow-cooling (Whittingham et al., 1972). More than 50% of preimplantation embryos survived after thawing and about 40% of the surviving embryos developed to full-term after being transferred to foster females. A similar protocol was applied successfully on cow embryos (Wilmut & Rowson, 1973), sheep embryos (Willadsen, 1977) and many other domestic mammals (Saragusty & Arav, 2011), suggesting that slow cooling is basically applicable to other mammalian embryos, provided the cooling rate can be optimized and well controlled. By using 1.5M DMSO as a cryoprotectant, sheep morulae and blastocysts were cooled at a rate of 0.1°C per minute. A survival rate of 80% can be achieved. With a similar protocol developed from mouse experiments, the first pregnancy after transfer of a cryopreserved human 8-cell embryo was recorded in 1983 (Trounson & Mohr, 1983). The pregnancy terminated at 24-weeks due to premature rupture of the membrane and *Streptomyces agalactiae* infection (Trounson & Mohr, 1983). A year later, Zeilmaker et al. (1984) described the first live birth after the transfer of cryopreserved human embryos. More reports of live births of cryopreserved human embryos were reported in the following year (Cohen et al., 1985; Downing et al., 1985) and in the years after that.

With the extensive characterization of embryo-cryoprotectant interactions, the feasibility of embryo cryopreservation by vitrification was demonstrated by Rall and Fahy (1985). The next challenges were to further lower the concentration of the cryoprotecting agent to be used and to increase the cooling rate. Increasing the cooling rate not only guarantees the absence of ice formation but also allows a further decrease in the amount of cryoprotecting agents being used, thus minimizing the potential toxic effects on the embryos. It can be illustrated by a recent report describing the use of a highly conductive micro-capillary to increase the cooling rate up to about 4,000°C per second. The cryoprotectant propylene glycol concentration can be reduced to 1.5M, compared to the normally used 4M or above (Lee et al., 2010). Over the past decade, a variety of holding devices have been developed to allow fast transmission of heat (thus a high cooling rate) from the sample to the coolants (reviewed in detail in Tsang and Chow, 2010). Some researchers have made use of containers with thinner walls, such as pulled-straw (Vajta et al., 1998). Others have made use of an open property of the devices to hold the sample on a surface to allow direct heat transfer between the samples and the coolant. These include the electronic microscopic metal grid (Martino et al., 1996), cryoloop (Lane et al., 1999), nylon mesh (Matsumoto et al., 2001), hemi-straw (Vanderzwalmen et al., 2003), cryotop (Kuwayama et al., 2005), vitrification spatula (Tsang & Chow, 2009) and plastic blade (Sugiyama et al., 2010). Using most of these open-systems, cryo-survival rates of above 80% are usually obtained. The remaining challenge is to select the right tool by considering the microbial surveillance requirement (a closed-storage system versus an open-storage system), the convenience factor and economic considerations in a routine facility operation.

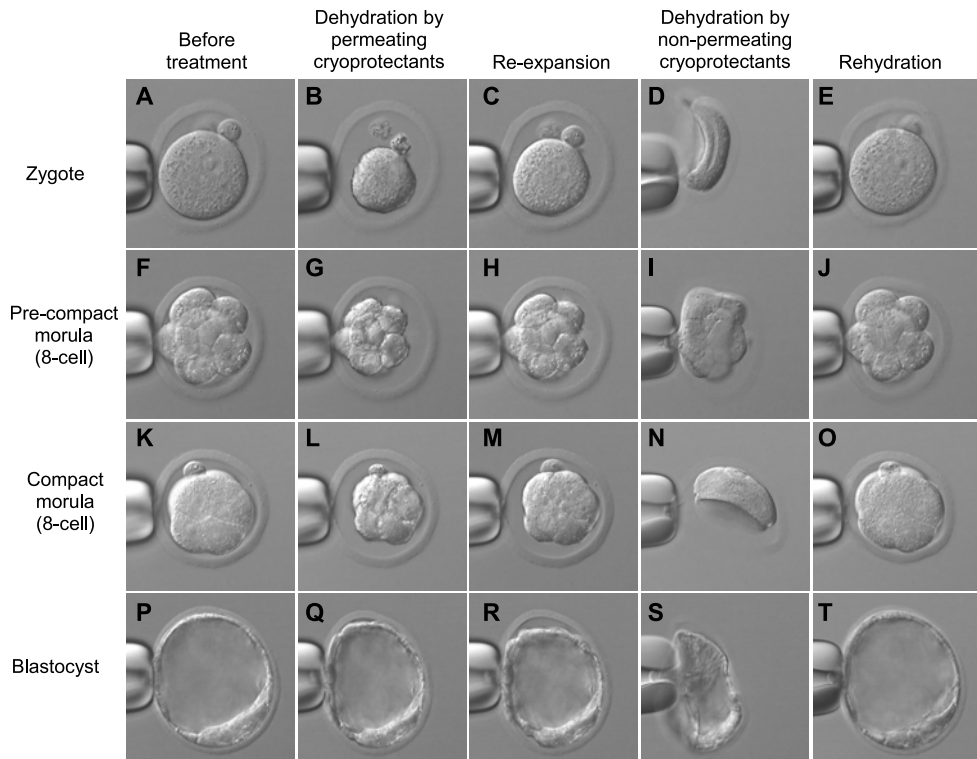


Fig. 4. Morphological changes of mammalian (mouse) preimplantation embryos in response to cryoprotectant treatments (for vitrification) and rehydration. Panel A-E: zygote (1-cell); panel F-J, pre-compact morula (8-cell); panel K-O, compact morula (8-cell); panel P-T, expanded blastocyst. Individual embryos were held by a glass micropipette by a slight suction under physiological isotonic medium (A, F, K and P). Vitrification solutions containing low concentration of permeating cryoprotectants and high concentration of permeating cryoprotectants plus non-permeating cryoprotectants were applied to the surroundings of the embryos, sequentially. About 30 seconds after the application of solution containing low concentration of permeating cryoprotectants, the embryos osmotically shrunk to minimal volumes (panel B, G, L and Q). The embryos (except the blastocyst) later re-expanded to a size closer to the original volumes, after an additional 30 seconds, when cryoprotectants and water re-entered the cells passively (panel C, H, M and R). After addition of the final vitrification solution containing high concentration of permeating cryoprotectants and non-permeating cryoprotectants, the embryos were further dehydrated by osmosis and shrunk without re-expansion. (panel D, I, N and S) High concentration of intracellular permeating cryoprotectants was achieved. Rapid cooling is normally done at this stage to vitrify the embryos but such cooling was not done in this demonstration. Step-wise rehydration of the embryos was done after dehydration to imitate the recovery steps after thawing the embryos from vitrification. After rehydration, the embryos re-expanded to their original size and regained normal morphologies (E, J, O and T).

Vitrification is now well accepted as a reliable means for cryopreserving mammalian embryos because of its simplicity; it does not require a controllable cooler. One factor responsible for the acceptance of this technology for cryopreservation of mammalian embryos has been the intensive studies on the interaction between different cryoprotectants and embryos, i.e. permeability and toxicity, at different developmental stages. Luckily, the most permeating cryoprotectants are not very toxic to the embryos. It allows the use of the cryoprotectants at a high concentration, yet below the lethal dose, to promote vitrification in response to a convenient cooling rate in most laboratories.

3. Cryopreservation of larvae of nematodes and platyhelminthes

3.1 Development of the nematode

Nematoda belong to the ecdysozoa, sharing the same clade with arthropoda. The members range from free living species to parasitic species in plants and animals. The life cycle of the nematode is generally divided into five morphological stages. Each successive larval stage is preceded by a molting process to remove the collagenous cuticle from the former larval stage. At hatching, the first-stage larva (Figure 3 A) consisting of 558 cells is under the protection by a cuticular layer. The animal grows in size after each hatching. In adulthood, a reproductive hermaphrodite is about 1mm long, 0.06mm in diameter, containing about 1,000 somatic cells. In comparison, a first-stage larva is about 0.37mm in length and 0.025mm in diameter.

Under favorable conditions, the development of the animal continues through the first- to the fourth-larval stage and finally to the reproductive adults. In many parasitic species such as the entomopathogenic species, the third-stage larvae are juveniles that are infective to their hosts. Under unfavorable conditions, i.e. outside the host body, a second-stage larva develops into the third-stage infective juvenile but retains the cuticle from the last larval stage to form a sheath. The entire animal is enclosed in the sheath until a suitable host is infected.

3.2 Cryopreservation of nematode without cryoprotectant additive

The simplest method for nematode cryopreservation was reported on ruminant nematodes. Infective juveniles were cooled directly in liquid nitrogen vapor after being unshathed by sodium hypochlorite, and suspended in physiological saline (Campbell and Thomson, 1973; Van Wyk et al., 1977). For example, infective juveniles of sheep nematodes (*Haemonchus contortus*, *Ostertagia circumcincta*, *Trichostrongylus axei*, *Trichostrongylus colubriformis*, *Nematodirus spathiger* and *Oesophagostomum columbianum*) and the bovine nematodes (*Haemonchus placei*, *Ostertagia ostertagi*, *Nematodirus helvetianus*, *Oesophagostomum radiatum*, *Cooperia pectinata* and *Cooperia punctata*) survived these simple cryopreservation procedures.

James (1985) suggested that the presence of natural cryoprotectants plays a role in the cryo-survival of domestic animal parasitic nematodes. Bai et al. (2004) demonstrated in *Steinernema carpocapsae* and *Heterorhabditis bacteriophora* that the cryo-survival rates of infective juveniles are positively correlated with worm concentration during the cryoprotectant glycerol incubation step. The survival rates ranged from about 20% to 100%, which was proportional to worm concentration of 120-12,000 per ml (Bai et al., 2004). Infective juveniles indeed produce cryoprotecting molecules such as trehalose and glycerol,

in response to thermal and other environmental stresses (Jagdale & Grew, 2003; Qiu & Bedding, 2002). The trehalose content in *Steinernema carpocapsae* increases from 4% to 8% after being incubated in 22% glycerol for 18 hours, before the animals are further processed for cryopreservation (Popiel & Vasquez, 1991). Production of natural cryoprotectants by the animal itself could, therefore, be the key to good animal survival in this cryopreservation procedure. Exploring an efficient way to induce the production of the natural cryoprotectants can improve cryo-survival. Identifying the molecular pathway responsible for cryoprotectant production may help make cryopreservation of these species simpler.

3.3 Slow freezing with DMSO and glycerol

Storage of live nematodes in liquid nitrogen was first demonstrated by Hwang (1970) who reported survival of animals in the genera *Aphelenchoides*, *Panagrellus*, *Turbatrix* and *Caenorhabditis*, after slow-cooling in heat-sealed glass ampoules, using DMSO as cryoprotectants. Later, glycerol was applied to slow cooling of *Caenorhabditis elegans* at the first-larval stage (Brenner, 1974) and since then this cryopreservation procedure has been routinely used for freezing this model organism in laboratories in the past 40 years. Up to 100% of the first-stage larvae survival can be achieved.

On the other hand, a slow-cooling method using DMSO as a cryoprotectant was used for cryopreserving another *Caenorhabditis* species popular in basic scientific research, i.e. *Caenorhabditis briggsae* (Haight et al., 1975). The worms were simply suspended in cooled 5% DMSO for 10 minutes and then slowly cooled at a rate of 0.2°C per minute to -100°C before storage in liquid nitrogen. About 75% of the animals at the second-larval stage and the third-larval stage, 50% of the fourth-stage larvae and 3% of the adult animals survived the freezing/thawing cycle. In contrast to *Caenorhabditis elegans*, no animals at the first-larval stage survived the cryopreservation (Haight et al., 1975). Obviously, traits favoring the cryopreservation procedures are present in different larval stages in both species.

The dog parasitic nematode *Strongyloides stercoralis* can be cryopreserved by slow cooling after incubation for up to 60 minutes in a solution containing 10% DMSO. When thawed, third-stage larvae retain infectivity to dogs and the recovered first-stage larvae develop to the third-larval stage and regain infectivity (Nolan et al., 1988). The cryopreserved sheep nematodes *Haemonchus contortus*, *Trichostrongylus colubriformis* and *Ostertagia circumcincta*, at the first-larval stage, retained their infectivity as well as unfrozen worms, when cooled slowly in 10% DMSO to -80°C before being transferred to liquid nitrogen for storage (Gill and Redwin, 1995).

3.4 Vitrification by an ethylene glycol two-step procedure

Before being used in mouse and fly embryo vitrification, ethylene glycol had been used for vitrifying the human platyhelminth *Schistosoma mansoni* and the farm animal nematode *Onchocerca microfilariae* in a similar two-stage procedure. *Schistosoma mansoni* were pre-incubated in 10% ethylene glycol at 37°C for 10 minutes, then cooled at 0°C for 5 minutes and finally incubated in 35% ethylene glycol for 10 minutes at 0°C. Before being rapidly cooled in liquid nitrogen, the worms were spread on a glass sliver (prepared from microscopic coverslips) which acted as an open carrier. About half of the thawed worms survived and remained infective in mice with an efficiency equivalent to half that of

unfrozen worms (James, 1981). On the other hand, 70% of the *Onchocerca microfilariae* were viable and remained infective after vitrification and thawing (Ham et al., 1981).

A similar vitrification methodology was also applied to the plant parasitic nematode *Meloidogyne Graminicola*, a rice root-knot nematode (Bridge & Ham 1985). The second-stage larvae were pre-incubated in 10% ethylene glycol at 37°C for 15 minutes and then incubated in 40% ethylene glycol for 30-45 minutes. The worms were then rapidly cooled in liquid nitrogen in the same manner as James (1981) on *Schistosoma mansoni*. This two-stage vitrification procedure on plant nematodes was later modified by Triantaphyllou & McCabe (1989) who replaced the glass coverslip slivers with a small strip of chromatography paper as a carrier device. A survival rate of up to 90% was obtained. The author reported that the modified two-step method produced satisfactory results on other plant parasitic nematodes also, such as some *Meloidogyne* and *Heterodera* species (Triantaphyllou & McCabe, 1989).

3.5 Vitrification by a glycerol/methanol two-step procedure

An entirely different treatment methodology was developed primarily for vitrifying the entomopathogenic nematodes in the genera *Steinernema* and *Heterorhabditis*, which are effective as a biological control agent for insect pests in agriculture (Popiel & Vasquez, 1991). *Steinernema carpocapsae* were pre-incubated in 22% glycerol at room temperature for 24 hours and then in ice cold 70% methanol for 10 minutes. After removal of the majority of methanol by centrifugation, concentrated worms in methanol (i.e. 20µl) were spread on a small strip of filter paper before plunging into liquid nitrogen for rapid cooling. Up to 95% post-thaw survival rate could be obtained. On the other hand, a post-thaw survival rate of about 55% was obtained on *Heterorhabditis bacteriophora* when the optimal 14% glycerol was used (Popiel & Vasquez, 1991).

Curran et al. (1992) further optimized the protocol by replacing the centrifugation with a filtration step to remove glycerol prior to the methanol incubation. The optimal conditions for glycerol incubation for a number of entomopathogenic nematodes were also determined. Optimal glycerol pre-incubation conditions were determined to be 18% glycerol for 24 hours for *Steinernema carpocapsae*, 17% glycerol for 72 hours for *Heterorhabditis bacteriophora* and 13.8% glycerol for 72 hours for *Steinernema feltiae* and *Steinernema glaseri* (Curran et al., 1992). Other than that, 167 entomopathogenic nematodes were found to be able to survive the cryopreservation treatments, proving the feasibility of cryobanking of these worms. The mean survival rate of the *Steinernema* species is 58% (ranging from 25% to 97%) and that of *Heterorhabditis* species is 51% (ranging from 25% to 87%).

Based on the modification by Curran et al. (1992), Nugent et al. (1996) optimized cryopreservation on seven isolates of *Heterorhabditis*. Up to 8 days of pre-incubation in 11% or 15% glycerol is optimal for cryopreserving a couple of isolates. Nugent (1996) also found that glycerol can be replaced by DMSO in the pre-incubation step. For example, incubation of isolate HI82 in 8% DMSO for 3 days yielded a survival rate of about 80%, similar to those pre-incubated in 15% DMSO.

To the best of our knowledge, unlike mammals, there have been no studies of interactions between nematodes and cryoprotectants. Conversely, different protocols have been developed independently by different groups for specific worm species. Whether the different protocols are indeed applicable to other groups of nematodes or not requires

further investigation. Nonetheless, we can interpret from the protocols that nematodes are generally resistant to cryoprotectant toxicity because most protocols involve a relatively long incubation time in cryoprotecting solutions. Surprisingly, most of the protocols do not involve removal of the cuticle, which is well known for its poor permeability, though successful cryoprotection requires the presence of enough intracellular concentration of cryoprotectant. It is possible that the cryoprotectants themselves can permeabilize the cuticle and then permeate into the cells beneath. Or the cryoprotectant enters the worm via the oral opening and the gut, into the rest of the body. Equally possible is that the "cryoprotectants" did not act as a cryoprotectant *per se* but acted as inducers to trigger the production of natural cryoprotectant in the worm. Therefore, thorough permeation of the chemicals was not required.

4. Cryopreservation of insect embryos

4.1 Development of insect embryos

Insecta is a class with the greatest interest among the *Arthropoda*. Pathogenic vectors associating mosquitoes, flies and bugs are of interest in medical and healthcare related research. Honeybee, silk moth, beetle and other moths are of economic interest to the beekeeping industry, silk industry and pest control in agriculture, respectively. The fruit fly *Drosophila melanogaster*, a species of the order *Diptera*, is chosen as an insect model in genetic studies because of its ease of keeping, handling and observing. It has a short life cycle and is fertile through out the year. A complete life cycle involves four distinct stages of development, which takes 8.5 days for a *Drosophila* egg to reach adulthood at 25°C.

A *Drosophila melanogaster* egg is about 0.18mm in width and 0.5mm in length, occupying a volume of about 9nl. The laid egg is a single cell with about 6,000 nuclei which later migrate to the plasma membrane to form a syncytial blastoderm at around 2 hours. Cell membranes form between the nuclei at around 2.5 hours. As gastrulation occurs, a ventral furrow and a cephalic furrow form. The midgut invaginates followed by a germ band extension (3-7 hours), stomodeal invagination (5-7 hours), germ band shortening, foregut and hindgut deeply invaginate (9-10 hours). The ectoderm closes dorsally and the head involutes at about 10-13 hours (Figure 3B). At around 13 hours, organogenesis has already begun in the 50,000-cell embryos. Organogenesis is completed and the gut regions are joined between 15 and 22 hours (i.e. at hatching) (Markow et al., 2009; Weigmann et al., 2003; Grumblin & Strelets, 2006). The hatched larva experiences three instar larval phases, before the skin of the third-instar larva hardens and encapsulates the animal to form a puparium. It takes four days for the third larva to transform into an adult by metamorphosis. At the end of metamorphosis, the adult of about 2.5mm length emerges from the puparium.

4.2 Permeabilization of insect embryos to cryoprotectants

The outermost layer of the eggshell of an insect embryo is a porous proteinacious chorion with a thickness ranging from 300-500nm in *Drosophila* to more than 40µm in saturniid moth (Magaritis et al., 1980; Fehrenbach, 1995). Underneath are: (1) the innermost crystalline chorion layer of about 40nm in *Drosophila* (Papassideri & Margaritis, 1996), (2) the waterproofing wax layer (Beament, 1946; Slifer, 1948) and (3) the vitelline layer (Papassideri et al., 1991). The wax layer is only 5nm in thickness in *Drosophila* and is intercalating with

the outer crystalline chorion layer and the inner vitelline layer (Papassideri et al., 1991). The wax is mainly composed of n-alkanes and methyl-branched alkanes (Nelson & Leopold, 2003), making the eggshell impermeable even to water, thus protecting the embryos from desiccation. Extracting the dechorionated eggs with a wax removing solvent makes the vitelline membrane permeable to water, cytological stains and antibiotics (Schreuders et al., 1996), (Limbourg & Zalokar, 1973). It supports the notion that the wax component in the vitelline layer is the major factor blocking the cryoprotecting molecule from permeating into the embryos.

To facilitate permeation of cryoprotectants into insect embryos for further cryopreservation protocol development, attempts were made to permeabilize the eggshell but retain the viability of the embryos. Removal of the chorion can be done by exposing the eggs to about 2.5% sodium hypochlorite, without compromising the survival of the embryos (Lynch et al., 1989). Permeabilizing the inner layer of the eggshell with low injury can be done by a 2-step method. Dechorionated eggs of 12-13 hour embryos were rinsed with isopropanol and hexane. The embryos in permeabilized eggshell experienced minimal injury with a survival rate of 75% to 90% in culture medium (Lynch et al., 1989). This procedure resulted in 80%-95% of the treated eggs being permeabilized to water, ethylene glycol, propylene glycol, glycerol and DMSO. Mazur et al. (1992b) further optimized the two-step method to allow permeation of common cryoprotectants such as ethylene glycol and glycerol. The best result was obtained by exposing the dechorionated 12-14 hour embryos to 0.3%-0.4% 1-butanol in n-heptane for 90 seconds. At least 90% permeabilization and 80% survival can be obtained. Older embryos between 14-16 hours are much less sensitive to the above procedures, which are lethal to 3 hour embryos. Using procedures similar to Mazur (1992b), with decreased concentration of sodium hypochlorite in dechorionation and replacing isopropanol with air drying, all mosquito (*Anopheles gambiae*) embryos at 15-19 hours can be permeabilized in ethylene glycol with an acceptable survival rate of 30% (Valencia et al., 1996). On the other hand, heptane treatment seemed to be detrimental to the greater wax moth (*Galleria mellonella*) embryos. Replacing the heptane treatment with incubation in 1.25% sodium hypochlorite with 0.08% Tween-80 for 2 minutes permeabilized the moth embryos with 68% survival (Cosi et al., 2010). Determination of the optimal permeabilization procedures and the optimal embryonic stage to be permeabilized in different insecta species has opened the door for efficient cryopreservation of this largest class of animals on land.

4.3 Chilling sensitivity of insect embryos

Drosophila embryos are highly sensitive to chilling. When 15 hour eggs were incubated at -15°C, 50% of the embryos died within an hour even in the absence of ice formation. When younger embryos at 3 hours and 6 hours were cooled to the same temperature, the chilling injury increased dramatically (Mazur et al., 1992c). All 12 hour embryos died at -25°C when cooled at 1°C per minute. A similar phenomenon was found in case of honey bee (*Apis mellifera*) embryos (Collins & Mazur, 2006). The slow cooling approach that requires time for efflux of intracellular water osmotically to avoid intracellular ice formation is, therefore, theoretically impractical for handling insect embryo cryoprotection. It was estimated that cooling the embryos faster than 300°C per second can circumvent the chilling injury by shortening the time the embryo stays at such a low temperature. However, lethal

intracellular ice forms at such a cooling rate when using the standard concentration of cryoprotectants (Mazur et al., 1992c). Vitrification is, therefore, the only possible way to cryopreserve insect embryos.

4.4 The success of insect embryo vitrification

Adopting and modifying the protocol for vitrifying mouse embryos with ethylene glycol (Rall & Fathy, 1985), Steponkus et al. (1990) first demonstrated successful vitrification of 13-14 hour *Drosophila* embryos. Instead of permeabilizing the vitelline layer with the currently developed method using an alkane, the eggs were "permeabilized" with a medium containing 2.125M ethylene glycol for 20 minutes. The intracellular concentration of ethylene glycol was further increased by dehydrating the embryos in 8.5M ethylene at 0°C for 8 minutes before plunging the embryos into nitrogen slush (-204°C), using a copper electronic microscopic grid as an open carrier (to achieve a cooling rate of about 400°C per second). After thawing, 18% of the eggs hatched and 3% developed into fertile adults. On the contrary, there were no embryos surviving at a lower cooling rate of 15°C per second when using a polypropylene straw as a carrier. The surrounding cryoprotecting solution vitrified *per se* since no crystals were detected by differential scanning calorimetry. The high lethality is probably due to the suboptimal permeabilization of the vitelline layer by ethylene glycol, leading to a lower concentration of cryoprotectants in the inner part of the multicellular/highly differentiated insect embryos. This may result in crystallization of water in the area with a lower concentration of cryoprotectant which would require a higher cooling rate to induce vitrification. A higher cooling rate was achieved by using a metal grid allowing vitrification to occur at such low concentrations of cryoprotectants, thus partially circumventing this potential permeating defect. Using a similar protocol, other *Dipteral* species such as blowfly (*Lucilia cuprina*, a parasite in sheep) (Leopold & Atkinson, 1999 20), midge (*Culicoides sonorensis*) (Nunamaker & Lockwood, 2001) and screw-worm (Leopold et al., 2001) were reported to be cryopreserved.

On the other hand, Mazur et al. (1992a) made use of the accumulated experience of wax removal by butanol-heptane based procedures to permeabilize the vitelline membrane prior to vitrification. In the optimized procedure, dechorionated *Drosophila* embryos were first permeabilized in 0.3% 1-butanol in n-heptane for 90 seconds. The embryos were then pre-incubated in 2M ethylene glycol for 30 minutes and then 8.5M ethylene glycol solution containing 10% polyvinylpyrrolidone for 5 minutes at 5°C before rapid cooling, using a filter membrane as an open carrier. The developmental stage of the embryos was also found to be critical for cryo-survival determination. Vitrifying precisely staged 14.5 hour embryos using the above mentioned method resulted in 60% of the cryopreserved embryos hatching and more than 40% of the hatched larvae developed into fertile adults (Mazur et al., 1992a).

The development of cryopreservation on *Drosophila* embryos suggests that permeabilization of the sample to cryoprotectant is the key to success even though the embryos are structurally complex. In nematode larvae, which are also susceptible to being cryopreserved, the organogenesis is even more advanced. This indicates that the body complexity brought about by organogenesis is not associated with the susceptibility of an embryo/larva to be cryopreserved, at least by vitrification. On the other hand, chilling injury can be circumvented by vitrification practically.

5. Cryopreservation of teleost embryos

5.1 Development of teleost embryos

The zygote of zebrafish (*Brachydanio rerio*) is about 0.7 mm in diameter when fertilization occurs. A few minutes later, the chorion swells to increase the diameter to about 1.2 mm, without much alteration in thickness, generating a significant vitelline space. The cytoplasm segregates to form the animal pole and the vegetal yolk with an approximate total volume of 128nl, not including the vitelline space and the chorion (Leung et al., 1998). The first cell cleavage occurs in the animal pole at about 45 minutes after fertilization. The blastomere gets divided five more times synchronously, each at about 15 minutes interval, producing a blastoderm with 64 cells in 2 hours. The daughter cells increase in number with a decrease in cell size. The blastomeres arrange themselves in a single cell layer before the fifth cleavage. Afterwards, newly formed daughter cells overlap with each other in the blastoderm. The multi-cell layered blastoderm spread over the yolk, reaching 30% epiboly at 4.7 hours and 50% epiboly at 5.25 hours (Figure 3C). At the gastrula period, epiboly continues at 5.3 hours. Two germ layers, i.e. epiblast and hypoblast, are formed by morphogenetic movement of involution, convergence and extension. Epiboly reaches 90% at 9 hours. At the end of this period, the tail bud and neural plate starts to form. The volume of the epiboly remains constant from 40% epiboly to 100% epiboly. Entering the segmentation period at 10 hours, segmentation processes such as formation of neuromeres, somites and the pharyngeal arch primordia occur. The embryo volume increases to 0.23 mm³ at the six-somite stage at 12 hours when organogenesis starts (Hagedorn et al., 1997c). At the end of the 14 hour-period, the yolk largely reduces and tail movement can be seen. Pigment can be identified after 36 hours. At the third day, the primary organogenesis completes. Cartilage in the head and pectoral fin develops while hatching occurs anytime in the third day (Kimmel et al., 1995).

5.2 Complexity of teleost embryos

Fish embryos are composed of several components with distinct physical properties. They include the highly dynamic cellular part on the animal pole which contributes entirely to the future animal body, the yolk surrounded by the yolk syncytial layer occupying the majority of the early stage embryo and the chorion as the outermost mechanical protective shield. From 40-100% epiboly, the blastoderm and the yolk occupy 18% and 82% of the dechorionated embryo, respectively, in zebrafish (*Brachydanio rerio*). At the six-somite stage, the volume of the blastoderm increases to about 40%, leaving the yolk occupying 60% of the embryo (Hagedorn et al., 1997c). Between the chorion and the embryo is the perivitelline space filled with liquid with a chemical composition virtually identical to the surrounding medium (Rawson et al., 2000). The complexity of the teleost embryos is further increased by the unbalanced partial density of water in different compartments. At the six-somite stage, the blastoderm occupies about 40% of the dechorionated embryos but water constitutes 82% of its volume. Conversely, the yolk occupies about 60% of the volume of the dechorionated embryos but only 42% of this is constituted by water (Hagedorn et al., 1997b). It was estimated that the osmotically inactive volume in the one-somite stage and six-somite stage embryos are 72.9% and 82.6%, respectively (Zhang & Rawson, 1998).

5.3 Permeability of teleost embryos

The low permeability of the chorion and the perivitelline is evident from retarded permeation of radio-labeled DMSO from the external medium into the embryos by several folds (Harvey et al., 1983). Even after removal of the outermost barrier, the embryos were poorly permeated by cryoprotectants. By chemical shift selective magnetic resonance microscopy and magnetic resonance spectroscopy, kinetics of permeation of cryoprotectants methanol, DMSO and propylene were measured. While methanol can permeate the entire six-somite zebrafish (*Brachydanio rerio*) embryos in 15 minutes, DMSO and propylene are relatively poor in permeating into the embryos when applied to the medium (Hagedorn et al., 1996). Similar findings were obtained by osmometric measurements of volume changes in the embryos tested (Hagedorn et al., 1997c). Also, magnetic resonance imaging on the distribution of cryoprotectants, delivered to the external medium or injected into the yolk, in the three-somite stage *Brachydanio rerio* embryo revealed that the yolk is far less permeable than the blastoderm and the yolk syncytial layer is the major barrier to the cryoprotectants (Hagedorn et al., 1996; Hagedorn et al., 1997a).

To artificially promote permeation of cryoprotectants into fish embryos, ultrasound of 175V was used to increase the permeability by methanol to *Danio rerio* 50% epiboly (Wang et al., 2008). A high-intensity femtosecond laser was also used to introduce transient pores on blastomeres and the blastoderm-yolk boundary. Successful delivery of large molecules such as fluorescein isothiocyanate, streptavidin-conjugated quantum dots and DNA plasmid was detected on pec-fin stage (Kohli et al., 2007). Whether the physically induced permeation method can help cryopreservation of the whole teleost embryos requires experimental verification.

5.4 Chilling sensitivity of teleost embryos

Medaka (*Oryzias latipes*) embryos at early cleavage stage, i.e. 2-4-cell stage, are very sensitive to cooling at 0°C for 40 minutes. Only 38% of the embryos survived the chilling treatment. However, the same chilling treatment did not affect the survival of embryos in early gastrula stage (Valdez et al., 2005). Similarly, zebrafish (*Brachydanio rerio*) at cleavage stage are more sensitive to chilling than embryos at epiboly and at three-somite stage (Hagedorn et al., 1997c). This indicates that embryos at later developmental stages are more resistant to chilling. A similar phenomenon was found on other teleost species such as red sea bream, olive flounder and multicolorfin rainbowfish. In the same study, it was found that cleavage stage embryos responded to chilling by obstructing mitotic division and early gastrula stage embryos responded by delayed development at epiboly (Sasaki et al., 1998).

5.5 Cryoprotectant toxicity on teleost embryos

Incubation of the three-somite stage zebrafish (*Brachydanio rerio*) embryos in 1.5M DMSO and methanol for 30 minutes at room temperature did not adversely affect their survival. While propylene glycol is moderately toxic to the embryos, similar treatment with ethylene glycol or glycerol is lethal to all treated embryos. Of the cryoprotecting agents tested, ethylene glycol solution specifically led to the blastoderm being dissociated from the yolk (Hagedorn et al., 1997c). A similar phenomenon was observed on 14 to 20-somite stage embryos of *Danio rerio* (Higaki et al., 2010b). Treating the embryos with glycerol at a

concentration of 2M for 30 minutes did not yield any viable cells in the embryos. The rest of the cryoprotectants tested (including methanol, ethylene glycol, DMSO, propylene glycol and 1,3-butylene glycol) gave a survival rate of between 90 to 100%. Treating the embryos with cryoprotectants at a higher concentration revealed that ethylene glycol is the next most toxic cryoprotectant, after glycerol; it kills all cells in the embryos at a concentration of 3M. In comparison, methanol and DMSO are moderately toxic. Propylene glycol and 1,3-butylene glycol are mildly toxic, killing only 58-78% of cells even at a concentration of 5M (Higaki et al., 2010b).

5.6 Attempts in vitrifying teleost embryos

So far, there have been no successful examples of live fish recovery after cryopreservation. The difficulty in controlling the dynamics of cryoprotecting agents and water in the highly structurally complex embryos may be the cause. However, studies have been conducted to assess the degree of protection provided by the cryoprotectant in vitrification. In a study, five-somite stages of turbot and zebrafish embryos were treated for 5 minutes with incremental concentrations of DMSO and then for a total time of 4 minutes in mixtures containing 5M DMSO, 2M methanol and 1M ethylene glycol, before being loaded into plastic straws and plunged into liquid nitrogen for vitrification. Although 50% of the overall glucose-6-phosphate dehydrogenase activity was retained, no embryo hatched after thawing (Robles et al., 2004).

The yolk and the surrounding syncytial layer were suggested to be a major reservoir of osmotically inactive water and a barrier to permeation of cryoprotectant to the blastoderm. After vitrifying yolk-removed zebrafish (*Danio rerio*) embryos at 14 to 20-somite stage in 20% ethylene glycol, 20% DMSO and 0.5M sucrose, no living embryos were obtained, but 87% of the cells survived after vitrification and up to 90% of the primordial germ cells were viable (Higaki et al., 2010a). Removal of yolk is deleterious to the development of the embryos. Eliminating the solute and water barrier by yolk removal is not the ultimate solution for cryopreserving fish embryos unless an artificial replacement of yolk is made feasible.

5.7 Alternatives for whole embryo cryopreservation

Due to the lack of progress in development of cryopreservation of fish embryos, isolated somatic cells are being explored as a means to preserve diploid genetic materials. The blastomere becomes one of the attractive candidates because of its abundance in embryos and its pluripotent property in the chimeric animals generated by blastomere implantation. The blastomere from genetically pigmented zebrafish embryos at mid-blastula stage were transplanted into an albino recipient embryo of the same developmental stage. In five out of the twenty-eight chimeric fish produced, blastomeres from the donor contributed to the germline, transmitting the pigmented phenotype to the next generation at a frequency of 1% to 40% (Lin et al., 1992). Slowly cooled zebrafish (*Danio rerio*) blastomeres, isolated from 50% epiboly, were cryopreserved with 1.5M DMSO and 0.1M sucrose in 0.25 ml straws by a programmable freezer. A survival rate of 70% was obtained after thawing (Lin et al., 2009). Combining these technologies, the germline transmission of the cryopreserved genetic materials through blastomeres-embryo chimera seems to be possible. More optimization, e.g., the stages from which the blastomeres are to be isolated, is needed to maximize germline transmission and to minimize operations to be conducted in a recovery procedure.

Another alternative diploid material often sought to be cryopreserved is the primordial germ cells. Compared with the blastomere, primordial germ cells are developmentally closer to the cell type to be differentiated *in vivo*, i.e. the germ cells. The first success in transplantation of primordial germ cells was demonstrated on rainbow trout (*Oncorhynchus mykiss*), a model with a relatively larger body size. Green fluorescent protein expressing primordial germ cells isolated from the genital ridge of hatchlings were injected into the peritoneal cavities of a wild type hatchling. The marker-labeled primordial germ cells were able to colonize the genital ridge of the recipient animal and transmit the donor characteristic to the next generation through sperm and eggs at a rate of up to about 4% (Takeuchi et al., 2003).

A similar operation in the smaller teleost species such as zebrafish is more challenging. A single primordial germ cell isolated from the pearl *Danio* (*Danio albolineatus*) at ten- to fifteen-somite stage was transplanted into the marginal region of each zebrafish (*Danio rerio*) embryo at the blastula stage and *vice versa*. The development of host germ cells was prevented in advance by injection of an antisense *dead end* morpholino oligonucleotide at an earlier embryonic stage (Slanchev et al., 2005). In the host, the transplanted primordial germ cell developed into a single gonad, making the animal regain fertility and transmit the donor genotype to the progenies. This complete germline replacement procedure can be applied to both goldfish (*Carassius auratus*) and loach (*Misgurnus anguillicaudatus*) (Saito et al., 2008). The success of these cases suggests that cryopreservation of primordial germ cells is a feasible approach to preserve the diploid germlasm. As the reservoirs of primordial germ cells, genital ridges from Rainbow trout (*Oncorhynchus mykiss*) embryos were cryopreserved by cooling in dry ice and then liquid nitrogen after treating with 1.8M ethylene glycol. About 51% of primordial germ cells survived. Fifteen to twenty surviving primordial germ cells were transplanted to the peritoneal cavity of each newly hatched animal. Germline transmission of the donor genotype could be found in 7.8% of the hosts and the germline transmission frequency was from 0.1 to 13.5%. (Kobayashi et al., 2007).

Later, Higaki et al. (2010b) vitrified whole zebrafish (*Danio rerio*) embryos at 14- to 20-somite stage with an optimized vitrification solution to cryopreserve primordial germ cells. With the use of 3M ethylene glycol and 0.5M sucrose, about 4 primordial germ cells, about 40% of all, survived in each embryo, after thawing. To increase cryo-survival, yolk-removed zebrafish (*Danio rerio*) embryos were vitrified in 20% ethylene glycol, 20% DMSO and 0.5M sucrose. Up to 90% live primordial germ cells were obtained. Half of the primordial germ cells retained pseudopodial movement. After transplanting the motile primordial germ cells into sterilized golden-type zebrafish blastulae, about 2.8% of the recipients developed normally and produced progenies with the donor's genotype (Higaki et al., 2010a).

Unless there is a breakthrough in cryopreserving and recovering whole fish embryos, cryopreservation of blastomeres or primordial germ cells seem to be the only methods for cryopreserving the fish diploid germlasm. Blastomeres may have advantages over primordial germ cells in generating germline transmitting chimera. Firstly, identification and isolation of primordial germ cells relies on a readily observable transgenic marker (Higaki et al., 2010b; Kobayashi et al., 2007). Breeding of a strain to a marker transgenic strain or freshly injecting DNA constructs is required before cryopreservation procedures, making the procedures more complicated. Removal of the marker from the recovered animals may also be required in some applications. Secondly, for germ-line replacement, the

recipient blastulae have to be sterilized, e.g., by injecting a *dead end* antisense morpholino (Ciruna et al., 2002). This demands additional procedures in the entire cryopreservation/recovery cycle, making the primordial germ cell-base approach less attractive than the existing sperm cryopreservation. Delivery of antifreezing proteins to directly minimize water crystal formation or aquaporins to increase permeability to cryoprotectants and movement of water (Chauvigne et al., 2011) through transgenesis similarly complicate the cryopreservation procedures.

6. Concluding remarks

Successful cryopreservation relies on a number of conditions and properties of the embryos or larvae to be fulfilled. The conditions, which may be interdependent on each other, are (1) the chilling sensitivity of the embryos/larvae; (2) the permeability of the embryos/larvae to cryoprotectant and water; and (3) the sensitivity of the embryos/larvae to the cryoprotectant toxicity. The permeability of the embryos/larvae can be a function of size and structural heterogeneity. The toxicity of the cryoprotectant to the embryos/larvae can be a function of permeability at a particular developmental stage. Although a cryopreservation protocol can be as simple as slow freezing *Caenorhabditis elegans* in 15% glycerol, most of the other organisms require extensive optimization before being cryopreserved efficiently. Understanding the behavior of the interacting conditions can help initiate the development of cryopreservation of other model animals.

Chilling injury We learned from classical model organisms that chilling sensitivity coupled with a slow cooling procedure could be detrimental and vitrification can be a shortcut or even a better starting point to achieve the same goal. Vitrification of highly chilling-sensitive insect embryos is an excellent example. On the other hand, we have to keep in mind that vitrification requires a relatively high concentration of permeating cryoprotectant(s). If a new model organism to be cryopreserved is highly sensitive to the cryoprotectant(s) and has relatively low permeability, vitrification may not be feasible. Slow cooling, which requires a lower concentration of cryoprotectant, thus also allowing longer time for permeation, may be considered.

Permeability The permeability of a sample towards cryoprotectants is the major barrier to cryopreservation of *Drosophila melanogaster*, *Danio rerio* and probably some other model organisms. Understanding the complexity and structural properties of the embryo/larvae can make cryopreservation possible by developing a corresponding strategy to manage the flow of cryoprotecting agents and water at will. Although the studies on *Danio rerio* embryo complexity and development did not bring about successful cryopreservation of the whole embryo, they helped development of alternatives for cryopreserving diploidic germplasms. Cryopreservation of blastomeres and primordial germ cells using the optimized conditions leads to generation of germline-transmitting chimera after transplantation of cells.

Toxicity of cryoprotectants Knowing the toxicity of cryoprotectants at different developmental stages of an organism is critical in determining the combination of cryoprotectants with embryonic/larval stages to be chosen for effective cryopreservation during protocol development. For example, glycerol and dimethylformamide are very toxic to fish embryos and mammalian morulae, respectively (Higaki et al., 2010b; Kasai et al., 1981).

Model organisms offer a platform to address biological issues of a broad range of interests with ease. An ideal platform must have specific traits allowing convenient manipulations in a manner beneficial to specific fields of study. Use of classical model organisms such as the house mouse *Mus musculus*, zebrafish *Danio rerio*, fruit fly *Drosophila melanogaster* and nematode *Caenorhabditis elegans* for studying physiology, genetics, genomics, behavior, human diseases and their treatments, etc is well established. These are attractive model organisms from their representative evolutionary position. They are relatively more readily available, tractable, small in body size, rapid in development and have short reproductive cycles. They are still popular models because of the establishment of transgenic technologies related to these animals (Fire, 1986; Gordon et al., 1980; Rubin & Spradling, 1982; Zelenin et al., 1991). Such genome manipulation technologies make reverse genetics possible, allowing studies to be amendable for these model organisms.

Knowledge gained on the above-mentioned classical models and other less popular model organisms has been expanding for the past few decades. Thorough comparative studies in various fields of research will benefit translational research and our understanding of the evolutionary tree of life. More interdisciplinary studies on model organisms representing animals in various branches of the phylogenetic tree will enhance our comparative study. Promising transgenic techniques have been recently established in respect of some of these animals, e.g., planaria *Girardia tigrina*, brine shrimp *Artemia sinica*, amphipod crustacean *Parhyale hawaiiensis*, red flour beetle *Tribolium castaneum*, sea anemone *Nematostella vectensis*, Mollusk dwarf surfclam *Mulinia lateralis*, sea squirt *Ciona intestinalis*, channel catfish *Ictalurus punctatus*, frog *Xenopus laevis* and *Xenopus tropicalis*, chicken *Gallus gallus*, Japanese quail *Coturnix japonica*, goat *Capra hircus*, dog *Canis familiaris* and marmoset *Callithrix jacchus*, (Berghammer et al., 1999; Chang et al., 2011; Dunham et al., 2002; Gonzalez-Estevéz et al., 2003; Hong et al., 2009; Houdebine, 2009; Huss et al., 2008; Lu et al. 1996; Macha et al., 1997; Mozdziak & Petite 2004 ; Pavlopoulos and Averof, 2005; Renfer et al., 2010; Sasaki et al., 2009; Sasakura et al., 2007; Wheeler, 2003). The development of genome manipulation techniques for these emerging animal models will open the door to unlimited possibilities of *in vivo* investigations.

The cost of the knowledge explosion and scientific advancement will be the handling of an enormous number of transgenic strains generated. The cost of managing these invaluable resources can be a substantial burden on research laboratories or institutions world wide, which may impede further development. So far cryopreservation has been developed for embryos/larvae from non-classical model animals, including oyster *Crassostrea gigas*, hard clam *Meretrix lusoria*, sea urchin *Loxechinus albus*, amphioxus *Branchiostoma belcheri*, brine shrimp *Artemia franciscana*, euryhaline rotifer *Brachionus plicatilis* and marmoset *Callithrix jacchus*, etc. (Barros et al., 1997; Chao et al., 1997; Summers et al., 1987; Sun et al., 2007; Toleda & Kurokura, 1990; Yoshida et al., 2011).

The experience in cryopreserving embryos from such a broad evolutionary range will benefit the development of cryopreservation techniques in other emerging model organisms. The parameters highlighted in this review represent some keys for developing an effective cryopreservation protocol for any organisms for experimental use. The thorough understanding of these parameters in different model systems, the optimization therein, and improved procedures to store transgenic strains will not only release the management stress caused by the need for keeping the live animals but also eliminate the risk of their being affected by disease outbreaks and genetic drifts. It has great practical

value for short term research purposes and daily operations. It is also beneficial for a longer term establishment of these models as alternative platforms for biomedical investigations.

7. Acknowledgement

We would like to thank Miss Mandy Chan and Prof. Andrew L. Miller (HKUST) for contribution to the photograph of a zebrafish embryo in Figure 3C. FlyMove, an internet educational resource (Weigmann 2003), is acknowledged for the permission in reproducing an image of a fly embryo in Figure 3B. WHT is a postdoctoral fellow supported by HKUST postdoctoral fellowship. This work was conducted and supported by Research Grants Council (HKUST 660407 and 660508).

8. References

- Bai, C., Shapiro-Ilan, D.I., Gaugler, R. & Yi, S. (2004). Effect of entomopathogenic nematode concentration on survival during cryopreservation in liquid nitrogen. *Journal of Nematology*, Vol. 36, pp. (281-284).
- Ballweber, P., Markl, J. & Burmester, T. (2002). Complete hemocyanin subunit sequences of the hunting spider *Cupiennius salei*: Recent hemocyanin remodeling in entelegyne spiders. *The Journal of Biological Chemistry*, Vol. 277, pp. (14451-14457).
- Barros, C., Muller, A. & Wood, M.J. (1997). High survival of spermatozoa and pluteus larvae of sea urchins frozen in Me2SO. *Cryobiology*, Vol. 35, pp. (341).
- Beament, J.W.L. (1946). The waterproofing process in eggs of *Rhadnius prolius* Stahl. *Proceedings of the Royal Society B: Biological Science*, Vol. 133, pp. (407-418).
- Berghammer, A.J., Klingler, M. & Wimmer, E.A. (1999). A universal marker for transgenic insects. *Nature*, Vol. 402, pp. (370-371).
- Borgsteede, F.H. & Hendriks, J. (1979). Experimental infections with *Cooperia oncophora* (Railliet, 1918) in calves. Results of single infections with two graded dose levels of larvae. *Parasitology*, Vol. 78, pp. (331-342).
- Brenner, S. (1974). The genetics of *Caenorhabditis elegans*. *Genetics*, Vol. 77, pp. (71-94).
- Bridge, J. & Ham, P.J. (1985). A technique for the cryopreservation of viable juveniles of *Meloidogyne gramminicola*. *Nematologica*, Vol. 31, pp. (185-189).
- Campbell, W.C. & Thomson, B.M. (1973). Survival of nematode larvae after freezing over liquid nitrogen. *Australian Veterinary Journal*, Vol. 49, pp. (110-111).
- Chang, S.H., Lee, B.C., Chen, Y.D., Lee, Y.C. & Tsai, H.J. (2011). Development of transgenic zooplankton *Artemia* as a bioreactor to produce exogenous protein. *Transgenic Research*, (Jan2011). 1573-9368.
- Chao, N.H., Lin, T.T., Chen, Y.J., Hsu, W.H. & Liao, I.C. (1997). Cryopreservation of the late embryos and early larvae in the oyster and hard clam. *Aquaculture*, Vol. 155, pp. (31-44).
- Chauvigne, F., Lubzens, E. & Cerda, J. (2011). Design and characterization of genetically engineered zebrafish *aquaporin-3* mutants highly permeable to the cryoprotectant ethylene glycol. *BMC Biotechnology*, Vol. 11, pp. (34).
- Ciruna, B., Weidinger, G., Knaut, H., Thisse, B., Thisse, C., Raz, E. & Schier, A.F. (2002). Production of maternal-zygotic mutant zebrafish by germ-line replacement.

- Proceedings of the National Academy of Sciences of the United States of America*, Vol. 99, pp. (14919-14924).
- Cohen, J., Simons, R.F., Fehilly, C.B., Fishel, S.B., Edwards, R.G., Hewitt, J., Rowland, G.F., Steptoe, P.C. & Webster, J.M. (1985). Birth after replacement of hatching blastocyst cryopreserved at expanded blastocyst stage. *Lancet*, Vol. 1, pp. (647).
- Collins, A.M. & Mazur, P. (2006). Chill sensitivity of honey bee, *Apis mellifera*, embryos. *Cryobiology*, Vol. 53, pp. (22-27).
- Cosi, E., Abidalla, M.T. & Roversi, P.F. (2010). The effect of Tween 80 on eggshell permeabilization in *Galleria mellonella* (L.) (Lepidoptera, pyralidae). *CryoLetters*, Vol. 31, pp. (291-300).
- Curran, J., Gilbert, C. & Butler, K. (1992). Routine cryopreservation of isolates of *Steinernema* and *Heterorhabditis* spp. *Journal of Nematology*, Vol. 24, pp. (269-270).
- Downing, B.G., Mohr, L.R., Trounson, A.O., Freemann, L.E. & Wood, C. (1985). Birth after transfer of cryopreserved embryos. *The Medical Journal of Australia*, Vol. 142, pp. (409-411).
- Drake, J.W., Charlesworth, B., Charlesworth, D. & Crow, J.F. (1998). Rates of spontaneous mutation. *Genetics*, Vol. 148, pp. (1667-1686).
- Dunham, R.A., Warr, G.W., Nichols, A., Duncan, P.L., Argue, B., Middleton, D. & Kucuktas, H. (2002). Enhanced bacterial disease resistance of transgenic channel catfish *Ictalurus punctatus* possessing cecropin genes. *Marine Biotechnology*, Vol. 4, pp. (338-344).
- Emiliani, S., Van den Bergh, M., Vannin, A.S., Biramane, J. & Englert, Y. (2000). Comparison of ethylene glycol, 1,2-propanediol and glycerol for cryopreservation of slow-cooled mouse zygotes, 4-cell embryos and blastocysts. *Human Reproduction*, Vol. 15, pp. (905-910).
- Eppig, J.T. & Strivens, M. (1999). Finding a mouse: The international mouse strain resource (IMSR). *Trends in Genetics*, Vol. 15, pp. (81-82).
- Fehrenbach, H. (1995). Egg shells of *Lepidoptera* - fine structure and phylogenetic implications. *Zoologischer Anzeiger*, Vol. 234, pp. (19-41).
- Fire, A. (1986). Integrative transformation of *Caenorhabditis elegans*. *The EMBO Journal*, Vol. 5, pp. (2673-2680).
- Gengyo-Ando, K. & Mitani, S. (2000). Characterization of mutations induced by ethyl methanesulfonate, UV, and trimethylpsoralen in the nematode *Caenorhabditis elegans*. *Biochemical and Biophysical Research Communications*, Vol. 269, pp. (64-69).
- Gill, J.H. & Redwin, J.M. (1995). Cryopreservation of the first-stage larvae of trichostrongylid nematode parasites. *International Journal for Parasitology*, Vol. 25, pp. (1421-1426).
- Gonzalez-Estevez, C., Momose, T., Gehring, W.J. & Salo, E. (2003). Transgenic planarian lines obtained by electroporation using transposon-derived vectors and an eye-specific GFP marker. *Proceedings of the National Academy of Sciences of the United States of America*, Vol. 100, pp. (14046-14051).
- Gordon, J.W., Scangos, G.A., Plotkin, D.J., Barbosa, J.A. & Ruddle, F.H. (1980). Genetic transformation of mouse embryos by microinjection of purified DNA. *Proceedings of the National Academy of Sciences of the United States of America*, Vol. 77, pp. (7380-7384).

- Grumbling, G. & Strelets, V. (2006). FlyBase: Anatomical data, images and queries. *Nucleic Acids Research*, Vol. 34, pp. (D484-8).
- Hagedorn, M., Hsu, E.W., Pilatus, U., Wildt, D.E., Rall, W.R. & Blackband, S.J. (1996). Magnetic resonance microscopy and spectroscopy reveal kinetics of cryoprotectant permeation in a multicompartamental biological system. *Proceedings of the National Academy of Sciences of the United States of America*, Vol. 93, pp. (7454-7459).
- Hagedorn, M., Hsu, E., Kleinhans, F.W. & Wildt, D.E. (1997a). New approaches for studying the permeability of fish embryos: Toward successful cryopreservation. *Cryobiology*, Vol. 34, pp. (335-347).
- Hagedorn, M., Kleinhans, F.W., Freitas, R., Liu, J., Hsu, E.W., Wildt, D.E. & Rall, W.F. (1997b). Water distribution and permeability of zebrafish embryos, *Brachydanio rerio*. *The Journal of Experimental Zoology*, Vol. 278, pp. (356-371).
- Hagedorn, M., Kleinhans, F.W., Wildt, D.E. & Rall, W.F. (1997c). Chill sensitivity and cryoprotectant permeability of dechorionated zebrafish embryos, *Brachydanio rerio*. *Cryobiology*, Vol. 34, pp. (251-263).
- Haight, M., Frim, J., Pasternak, J. & Frey, H. (1975). Freeze-thaw survival of the free-living nematode *Caenorhabditis briggsae*. *Cryobiology*, Vol. 12, pp. (497-505).
- Ham, P.J., Townson, S., James, E.R. & Bianco, A.E. (1981). An improved technique for the cryopreservation of onchocerca microfilariae. *Parasitology*, Vol. 83, pp. (139-146).
- Harvey, B., Kelley, R.N. & Ashwood-Smith, M.J. (1983). Permeability of intact and dechorionated zebra fish embryos to glycerol and dimethyl sulfoxide. *Cryobiology*, Vol. 20, pp. (432-439).
- Higaki, S., Eto, Y., Kawakami, Y., Yamaha, E., Kagawa, N., Kuwayama, M., Nagano, M., Katagiri, S. & Takahashi, Y. (2010a). Production of fertile zebrafish (*Danio rerio*) possessing germ cells (gametes) originated from primordial germ cells recovered from vitrified embryos. *Reproduction*, Vol. 139, pp. (733-740).
- Higaki, S., Mochizuki, K., Akashi, Y., Yamaha, E., Katagiri, S. & Takahashi, Y. (2010b). Cryopreservation of primordial germ cells by rapid cooling of whole zebrafish (*Danio rerio*) embryos. *The Journal of Reproduction and Development*, Vol. 56, pp. (212-218).
- Hong, S.G., Kim, M.K., Jang, G., Oh, H.J., Park, J.E., Kang, J.T., Koo, O.J. et al. (2009). Generation of red fluorescent protein transgenic dogs. *Genesis*, Vol. 47, pp. (314-322).
- Houdebine, L.M. (2009). Production of pharmaceutical proteins by transgenic animals. *Comparative Immunology, Microbiology and Infectious Diseases*, Vol. 32, pp. (107-121).
- Huss, D., Poynter, G. & Lansford, R. (2008). Japanese quail (*Coturnix japonica*) as a laboratory animal model. *Lab Animal*, Vol. 37, pp. (513-519).
- Hwang, S.W. (1970). Freezing and storage of nematodes in liquid nitrogen. *Nematologica*, Vol. 16, pp. (305-308).
- Jagdale, G.B. & Grewal, P.S. (2003). Acclimation of entomopathogenic nematodes to novel temperatures: Trehalose accumulation and the acquisition of thermotolerance. *International Journal for Parasitology*, Vol. 33, pp. (145-152).
- James, E.R. (1981). *Schistosoma mansoni*: Cryopreservation of schistosomula by two-step addition of ethanediol and rapid cooling. *Experimental Parasitology*, Vol. 52, pp. (105-116).

- James, E.R. (1985). Cryopreservation of helminths. *Parasitology Today*, Vol. 1, pp. (134-139).
- Kasai, M., Niwa, K. & Iritani, A. (1981). Effects of various cryoprotective agents on the survival of unfrozen and frozen mouse embryos. *Journal of Reproduction and Fertility*, Vol. 63, pp. (175-180).
- Katkov, I.I. & Pogorelov, A.G. (2007). Influence of exposure to vitrification solutions on 2-cell mouse embryos: II. osmotic effects or chemical toxicity? *CryoLetters*, Vol. 28, pp. (409-427).
- Keskintepe, L., Sher, G., Machnicka, A., Tortoriello, D., Bayrak, A., Fisch, J. & Agca, Y. (2009). Vitrification of human embryos subjected to blastomere biopsy for pre-implantation genetic screening produces higher survival and pregnancy rates than slow freezing. *Journal of Assisted Reproduction and Genetics*, Vol. 26, pp. (629-635).
- Kimmel, C.B., Ballard, W.W., Kimmel, S.R., Ullmann, B. & Schilling, T.F. (1995). Stages of embryonic development of the zebrafish. *Developmental Dynamics : An Official Publication of the American Association of Anatomists*, Vol. 203, pp. (253-310).
- Kobayashi, T., Takeuchi, Y., Takeuchi, T. & Yoshizaki, G. (2007). Generation of viable fish from cryopreserved primordial germ cells. *Molecular Reproduction and Development*, Vol. 74, pp. (207-213).
- Kohli, V., Robles, V., Cancela, M.L., Acker, J.P., Waskiewicz, A.J. & Elezzabi, A.Y. (2007). An alternative method for delivering exogenous material into developing zebrafish embryos. *Biotechnology and Bioengineering*, Vol. 98, pp. (1230-1241).
- Kosik, K.S. (2009). MicroRNAs tell an evo-devo story. *Nature Reviews.Neuroscience*, Vol. 10, No. 10, (Oct), pp. (754-759).
- Krzyminska, U. & O'Neill, C. (1991). The effects of cryopreservation and thawing on the development in vitro and in vivo of biopsied 8-cell mouse embryos. *Human Reproduction*, Vol. 6, pp. (832-835).
- Kuwayama, M., Vajta, G., Kato, O. & Leibo, S.P. (2005). Highly efficient vitrification method for cryopreservation of human oocytes. *Reproductive Biomedicine Online*, Vol. 11, pp. (300-308).
- Lane, M., Schoolcraft, W.B. & Gardner, D.K. (1999). Vitrification of mouse and human blastocysts using a novel cryoloop container-less technique. *Fertility and Sterility*, Vol. 72, pp. (1073-1078).
- Lee, H.J., Elmoazzen, H., Wright, D., Biggers, J., Rueda, B.R., Heo, Y.S., Toner, M. & Toth, T.L. (2010). Ultra-rapid vitrification of mouse oocytes in low cryoprotectant concentrations. *Reproductive Biomedicine Online*, Vol. 20, pp. (201-208).
- Leung, C.F., Webb, S.E. & Miller, A.L. (1998). Calcium transients accompany ooplasmic segregation in zebrafish embryos. *Development, Growth & Differentiation*, Vol. 40, pp. (313-326).
- Limbourg, B. & Zalokar, M. (1973). Permeabilization of *Drosophila* eggs. *Developmental Biology*, Vol. 35, pp. (382-387).
- Lin, S., Long, W., Chen, J. & Hopkins, N. (1992). Production of germ-line chimeras in zebrafish by cell transplants from genetically pigmented to albino embryos. *Proceedings of the National Academy of Sciences of the United States of America*, Vol. 89, pp. (4519-4523).
- Lin, C., Zhang, T. & Rawson, D.M. (2009). Cryopreservation of zebrafish (*Danio rerio*) blastomeres by controlled slow cooling. *CryoLetters*, Vol. 30, pp. (132-141).

- Liu, J., Van den Abbeel, E. & Van Steirteghem, A. (1993). The in-vitro and in-vivo developmental potential of frozen and non-frozen biopsied 8-cell mouse embryos. *Human Reproduction*, Vol. 8, pp. (1481-1486).
- Leopold, R.A. & Atkinson, P.W.(1999). Cryopreservation of sheep blow fly embryos, *Lucilia cuprina* (Diptera: Calliphoridae). *CryoLetters*, Vol. 20, pp. (37-44).
- Leopold, R.A., Wang, W.B., Berkebile, D.R. & Freeman T.P.(2001). Cryopreservation of embryos of the new world screwworm *Cochliomyia hominivorax* (diptera: calliphoridae). *Annals of the Entomological Society of America*, Vol. 94, pp. (695-701).
- Lu, J.K., Chen, T.T., Allen, S.K., Matsubara, T. & Burns, J.C. (1996). Production of transgenic dwarf surfclams, *Mulinia lateralis*, with pantropic retroviral vectors. *Proceedings of the National Academy of Sciences of the United States of America*, Vol. 93, pp. (3482-3486).
- Lynch, D.V., Lin, T.T., Myers, S.P., Leibo, S.P., Macintyre, R.J., Pitt, R.E. & Steponkus, P.L. (1989). A two-step method for permeabilization of *Drosophila* eggs. *Cryobiology*, Vol. 26, pp. (445-452).
- Macha, J., Stursova, D., Takac, M., Habrova, V. & Jonak, J. (1997). Uptake of plasmid RSV DNA by frog and mouse spermatozoa. *Folia Biologica*, Vol. 43, pp. (123-127).
- Manipalviratn, S., DeCherney, A. & Segars, J. (2009). Imprinting disorders and assisted reproductive technology. *Fertility and Sterility*, Vol. 91, pp. (305-315).
- Margaritis, L.H., Kafatos, F.C. & Petri, W.H. (1980). The eggshell of *Drosophila melanogaster*. I. fine structure of the layers and regions of the wild-type eggshell. *Journal of Cell Science*, Vol. 43, pp. (1-35).
- Markow, T.A., Beall, S. & Matzkin, L.M. (2009). Egg size, embryonic development time and ovoviviparity in *Drosophila* species. *Journal of Evolutionary Biology*, Vol. 22, pp. (430-434).
- Martino, A., Songsasen, N. & Leibo, S.P. (1996). Development into blastocysts of bovine oocytes cryopreserved by ultra-rapid cooling. *Biology of Reproduction*, Vol. 54, pp. (1059-1069).
- Matsumoto, H., Jiang, J.Y., Tanaka, T., Sasada, H. & Sato, E. (2001). Vitrification of large quantities of immature bovine oocytes using nylon mesh. *Cryobiology*, Vol. 42, pp. (139-144).
- Mazur, P. & Schneider, U. (1986). Osmotic responses of preimplantation mouse and bovine embryos and their cryobiological implications. *Cell Biophysics*, Vol. 8, pp. (259-285).
- Mazur, P., Cole, K.W., Hall, J.W., Schreuders, P.D. & Mahowald, A.P. (1992a). Cryobiological preservation of *Drosophila* embryos. *Science (New York, N.Y.)*, Vol. 258, pp. (1932-1935).
- Mazur, P., Cole, K.W. & Mahowald, A.P. (1992b). Critical factors affecting the permeabilization of *Drosophila* embryos by alkanes. *Cryobiology*, Vol. 29, pp. (210-239).
- Mazur, P., Schneider, U. & Mahowald, A.P. (1992c). Characteristics and kinetics of subzero chilling injury in *Drosophila* embryos. *Cryobiology*, Vol. 29, pp. (39-68).
- Mozdziak, P.E. & Petite, J.N. (2004). Status of transgenic chicken models for developmental biology. *Developmental Dynamics*, Vol. 229, pp. (414-421).

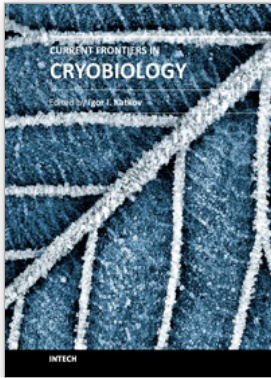
- Nelson, D.R. & Leopold, R.A. (2003). Composition of the surface hydrocarbons from the vitelline membranes of dipteran embryos. *Comparative Biochemistry and Physiology, Part B, Biochemistry & Molecular Biology*, Vol. 136, pp. (295-308).
- Nolan, T.J., Aikens, L.M. & Schad, G.A. (1988). Cryopreservation of first-stage and infective third-stage larvae of *Strongyloides stercoralis*. *The Journal of Parasitology*, Vol. 74, pp. (387-391).
- Nugent, M.J., O'Leary, S.A. & Burnell, A.M. (1996). Optimised procedures for the cryopreservation of different species of *Heterorhabditis*. *Fundamental and Applied Nematology*, Vol. 19, pp. (1-6).
- Nunamaker, R.A. & Lockwood, J.A. (2001). Cryopreservation of embryos of *Culicoides sonorensis* (Diptera: Ceratopogonidae). *Journal of Medical Entomology*, Vol. 38, pp. (55-58).
- Papassideri, I., Margaritis, L.H. & Gulik-Krzywicki, T. (1991). The egg-shell of *Drosophila melanogaster*. VI, structural analysis of the wax layer in laid eggs. *Tissue & Cell*, Vol. 23, pp. (567-575).
- Papassideri, I.S. & Margaritis, L.H. (1996). The eggshell of *Drosophila melanogaster*: IX. synthesis and morphogenesis of the innermost chorionic layer. *Tissue & Cell*, Vol. 28, pp. (401-409).
- Parriego, M., Sole, M., Aurell, R., Barri, P.N. & Veiga, A. (2007). Birth after transfer of frozen-thawed vitrified biopsied blastocysts. *Journal of Assisted Reproduction and Genetics*, Vol. 24, pp. (147-149).
- Pavlopoulos, A. & Averof, M. (2005). Establishing genetic transformation for comparative developmental studies in the crustacean *Parhyale hawaiiensis*. *Proceedings of the National Academy of Sciences of the United States of America*, Vol. 102, pp. (7888-7893).
- Pedro, P.B., Yokoyama, E., Zhu, S.E., Yoshida, N., Valdez, D.M., Jr, Tanaka, M., Edashige, K. & Kasai, M. (2005). Permeability of mouse oocytes and embryos at various developmental stages to five cryoprotectants. *The Journal of Reproduction and Development*, Vol. 51, pp. (235-246).
- Pogorelov, A.G., Katkov, I.I. & Pogorelova, V.N. (2007). Influence of exposure to vitrification solutions on 2-cell mouse embryos: I. intracellular potassium and sodium content. *CryoLetters*, Vol. 28, pp. (403-408).
- Pogorelov, A.G., Katkov, I.I., Smolyaninova, E.I. & Goldshtein, D.V. (2006). Changes in intracellular potassium and sodium content of 2-cell mouse embryos induced by exposition to vitrification concentrations of ethylene glycol. *CryoLetters*, Vol. 27, pp. (87-98).
- Popiel, I. & Vasquez, E.M. (1991). Cryopreservation of *Steinernema carpocapsae* and *Heterorhabditis bacteriophora*. *Journal of Nematology*, Vol. 23, pp. (432-437).
- Qiu, L. & Bedding, R.A. (2002). Characteristics of protectant synthesis of infective juveniles of *Steinernema carpocapsae* and importance of glycerol as a protectant for survival of the nematodes during osmotic dehydration. *Comparative Biochemistry and Physiology, Part B, Biochemistry & Molecular Biology*, Vol. 131, pp. (757-765).
- Rall, W.F. & Fahy, G.M. (1985). Ice-free cryopreservation of mouse embryos at -196 degrees C by vitrification. *Nature*, Vol. 313, pp. (573-575).
- Rall, W.F. (1987). Factors affecting the survival of mouse embryos cryopreserved by vitrification. *Cryobiology*, Vol. 24, pp. (387-402).

- Rawson, D.M., Zhang, T., Kalicharan, D. & Jongebloed, W.L. (2000). FESEM and TEM studies of the chorion, plasma membrane and syncytial layers of the gastrula stage embryo of the zebrafish (*Brachydanio rerio*): A consideration of the structural and functional relationship with respect to cryoprotectant penetration. *Aquaculture Research*, Vol. 31, pp. (325-336).
- Renfer, E., Amon-Hassenzahl, A., Steinmetz, P.R. & Technau, U. (2010). A muscle-specific transgenic reporter line of the sea anemone, *Nematostella vectensis*. *Proceedings of the National Academy of Sciences of the United States of America*, Vol. 107, pp. (104-108).
- Robles, V., Cabrita, E., de Paz, P., Cunado, S., Anel, L. & Herraez, M.P. (2004). Effect of a vitrification protocol on the lactate dehydrogenase and glucose-6-phosphate dehydrogenase activities and the hatching rates of zebrafish (*Danio rerio*) and turbot (*Scophthalmus maximus*) embryos. *Theriogenology*, Vol. 61, pp. (1367-1379).
- Rubin, G.M. & Spradling, A.C. (1982). Genetic transformation of *Drosophila* with transposable element vectors. *Science*, Vol. 218, pp. (348-353).
- Saito, T., Goto-Kazeto, R., Arai, K. & Yamaha, E. (2008). Xenogenesis in teleost fish through generation of germ-line chimeras by single primordial germ cell transplantation. *Biology of Reproduction*, Vol. 78, pp. (159-166).
- Saragusty, J. & Arav, A. (2011). Current progress in oocyte and embryo cryopreservation by slow freezing and vitrification. *Reproduction*, Vol. 141, pp. (1-19).
- Sasaki, K., Kurokura, H. & Kasahara, S. (1988). Changes in low temperature tolerance of the eggs of certain marine fish during embryonic development. *Comparative Biochemistry and Physiology*, Vol. 91A, pp. (183-187).
- Sasaki, E., Suemizu, H., Shimada, A., Hanazawa, K., Oiwa, R., Kamioka, M., Tomioka, I. et al. (2009). Generation of transgenic non-human primates with germline transmission. *Nature*, Vol. 459, pp. (523-527).
- Sasakura, Y., Oogai, Y., Matsuoka, T., Satoh, N. & Awazu, S. (2007). Transposon mediated transgenesis in a marine invertebrate chordate: *Ciona intestinalis*. *Genome Biology*, Vol. 8 Suppl 1, pp. (S3).
- Scavarda, N.J. & Hartl, D.L. (1984). Interspecific DNA transformation in *Drosophila*. *Proceedings of the National Academy of Sciences of the United States of America*, Vol. 81, pp. (7515-7519).
- Schreuders, P.D., Kassis, J., Cole, K.W., Schneider, U., Mahowald, A.P. & Mazur, P. (1996). Kinetics of embryo drying in *Drosophila melanogaster* as a function of the steps of permeabilization: Experimental. *Journal of Insect Physiology*, Vol. 42, pp. (501-516).
- Shapiro, D.I., Glazer, I. & Segal, D. (1996). Trait stability and fitness of the heat tolerant entomopathogenic nematode *Heterorhabditis bacteriophora* IS5 strain. *Biological Control*, Vol. 6, pp. (238-244).
- Skarnes, W.C., Rosen, B., West, A.P., Koutsourakis, M., Bushell, W., Iyer, V., Mujica, A.O. et al. (2011). A conditional knockout resource for the genome-wide study of mouse gene function. *Nature*, Vol. 474, pp. (337-342).
- Slanchev, K., Stebler, J., de la Cueva-Mendez, G. & Raz, E. (2005). Development without germ cells: The role of the germ line in zebrafish sex differentiation. *Proceedings of the National Academy of Sciences of the United States of America*, Vol. 102, pp. (4074-4079).

- Slifer, E.H. (1948). Isolation of a wax-like material from the shell of the grasshopper egg. *Discussions of the Faraday Society*, Vol. 3, pp. (182-187).
- Snabes, M.C., Cota, J. & Hughes, M.R. (1993). Cryopreserved mouse embryos can successfully survive biopsy and refreezing. *Journal of Assisted Reproduction and Genetics*, Vol. 10, pp. (513-516).
- Songsasen, N., Buckrell, B.C., Plante, C. & Leibo, S.P. (1995). In vitro and in vivo survival of cryopreserved sheep embryos. *Cryobiology*, Vol. 32, No. 1, (Feb), pp. (78-91).
- Steponkus, P.L., Myers, S.P., Lynch, D.V., Gardner, L., Bronshteyn, V., Leibo, S.P., Rall, W.F., Pitt, R.E., Lin, T.T. & MacIntyre, R.J. (1990). Cryopreservation of *Drosophila melanogaster* embryos. *Nature*, Vol. 345, pp. (170-172).
- Stevens, J.C., Banks, G.T., Festing, M.F. & Fisher, E.M. (2007). Quiet mutations in inbred strains of mice. *Trends in Molecular Medicine*, Vol. 13, pp. (512-519).
- Stuart, R.J. & Gaugler, R. (1996). Genetic adaptation and founder effect in laboratory populations of the entomopathogenic nematode *Steinernema glaseri*. *Canadian Journal of Zoology*, Vol. 74, pp. (164-170).
- Sugiyama, R., Nakagawa, K., Shirai, A., Sugiyama, R., Nishi, Y., Kuribayashi, Y. & Inoue, M. (2010). Clinical outcomes resulting from the transfer of vitrified human embryos using a new device for cryopreservation (plastic blade). *Journal of Assisted Reproduction and Genetics*, Vol. 27, pp. (161-167).
- Summers, P.M., Shephard, A.M., Taylor, C.T. & Hearn, J.P. (1987). The effects of cryopreservation and transfer on embryonic development in the common marmoset monkey, *Callithrix jacchus*. *Journal of Reproduction and Fertility*, Vol. 79, pp. (241-250).
- Sun, Y., Zhang, Q.J. & Wang, Y.Q. (2007). Programmed cryopreservation of the amphioxus *Branchiostoma belcheri* embryos. *Current Zoology*, Vol. 53, pp. (524-530).
- Takeuchi, Y., Yoshizaki, G. & Takeuchi, T. (2003). Generation of live fry from intraperitoneally transplanted primordial germ cells in rainbow trout. *Biology of Reproduction*, Vol. 69, pp. (1142-1149).
- Toledo, J.D. & Kurokura, H. (1990). Cryopreservation of the euryhaline rotifer *Brachionus plicatilis*. *Aquaculture*, Vol. 91, pp. (385-394).
- Triantaphyllou, A.C. & McCabe, E. (1989). Efficient preservation of root-knot and cyst nematodes in liquid nitrogen. *Journal of Nematology*, Vol. 21, pp. (423-426).
- Trounson, A. & Mohr, L. (1983). Human pregnancy following cryopreservation, thawing and transfer of an eight-cell embryo. *Nature*, Vol. 305, pp. (707-709).
- Tsang, W.H. & Chow, K.L. (2009). Mouse embryo cryopreservation utilizing a novel high-capacity vitrification spatula. *BioTechniques*, Vol. 46, pp. (550-552).
- Tsang, W.H. & Chow, K.L. (2010). Cryopreservation of mammalian embryos: Advancement of putting life on hold. *Birth Defects Research. Part C, Embryo Today : Reviews*, Vol. 90, pp. (163-175).
- Vajta, G., Holm, P., Kuwayama, M., Booth, P.J., Jacobsen, H., Greve, T. & Callesen, H. (1998). Open pulled straw (OPS) vitrification: A new way to reduce cryoinjuries of bovine ova and embryos. *Molecular Reproduction and Development*, Vol. 51, pp. (53-58).
- Valdez, D.M., Jr, Miyamoto, A., Hara, T., Edashige, K. & Kasai, M. (2005). Sensitivity to chilling of medaka (*Oryzias latipes*) embryos at various developmental stages. *Theriogenology*, Vol. 64, pp. (112-122).

- Valencia, M.D., Miller, L.H. & Mazur, P. (1996). Permeabilization of eggs of the malaria mosquito *Anopheles gambiae*. *Cryobiology*, Vol. 33, pp. (149-162).
- Van Wyk, J.A., Gerber, H.M. & Van Aardt, W.P. (1977). Cryopreservation of the infective larvae of the common nematodes of ruminants. *The Onderstepoort Journal of Veterinary Research*, Vol. 44, pp. (173-194).
- Vanderzwalmen, P., Bertin, G., Debauche, C., Standaert, V., Bollen, N., van Roosendaal, E., Vandervorst, M., Schoysman, R. & Zech, N. (2003). Vitrification of human blastocysts with the hemi-straw carrier: Application of assisted hatching after thawing. *Human Reproduction*, Vol. 18, pp. (1504-1511).
- Wang, X. & Grewal, P.S. (2002). Rapid genetic deterioration of environmental tolerance and reproductive potential of an entomopathogenic nematode during laboratory maintenance. *Biological Control*, Vol. 23, pp. (78).
- Wang, R.Y., Guan, M., Rawson, D.M. & Zhang, T. (2008). Ultrasound enhanced methanol penetration of zebrafish (*Danio rerio*) embryos measured by permittivity changes using impedance spectroscopy. *European Biophysics Journal*, Vol. 37, pp. (1039-1044).
- Weigmann, K., Klapper, R., Strasser, T., Rickert, C., Technau, G., Jackle, H., Janning, W. & Klamt, C. (2003). FlyMove--a new way to look at development of *Drosophila*. *Trends in Genetics*, Vol. 19, pp. (310-311).
- Wheeler, M.B. (2003). Production of transgenic livestock: Promise fulfilled. *Journal of Animal Science*, Vol. 81 Suppl 3, pp. (32-37).
- Whittingham, D.G., Leibo, S.P. & Mazur, P. (1972). Survival of mouse embryos frozen to -196 degrees and -269 degrees C. *Science*, Vol. 178, pp. (411-414).
- Willadsen, S.M. (1977). Factors affecting the survival of sheep embryos during-freezing and thawing. *Ciba Foundation Symposium*, Vol. (52), pp. (175-201).
- Wilmot, I. & Rowson, L.E. (1973). Experiments on the low-temperature preservation of cow embryos. *The Veterinary Record*, Vol. 92, pp. (686-690).
- Wilton, L.J., Shaw, J.M. & Trounson, A.O. (1989). Successful single-cell biopsy and cryopreservation of preimplantation mouse embryos. *Fertility and Sterility*, Vol. 51, pp. (513-517).
- Yoshida, T., Arii, Y., Hino, K., Sawatani, I., Tanaka, M., Takahashi, R., Bando, T., Mukai, K. & Fukuo, K. (2011). High hatching rates after cryopreservation of hydrated cysts of the brine shrimp *A. franciscana*. *CryoLetters*, Vol. 32, pp. (206-215).
- Zeilmaker, G.H., Alberda, A.T., van Gent, I., Rijkmans, C.M. & Drogendijk, A.C. (1984). Two pregnancies following transfer of intact frozen-thawed embryos. *Fertility and Sterility*, Vol. 42, pp. (293-296).
- Zelenin, A.V., Alimov, A.A., Barmintzev, V.A., Beniumov, A.O., Zelenina, I.A., Krasnov, A.M. & Kolesnikov, V.A. (1991). The delivery of foreign genes into fertilized fish eggs using high-velocity microprojectiles. *FEBS Letters*, Vol. 287, pp. (118-120).
- Zernicka-Goetz, M., Pines, J., McLean Hunter, S., Dixon, J.P., Siemering, K.R., Haseloff, J. & Evans, M.J. (1997). Following cell fate in the living mouse embryo. *Development*, Vol. 124, pp. (1133-1137).
- Zhang, T. & Rawson, D.M. (1998). Permeability of dechorionated one-cell and six-somite stage zebrafish (*Brachydanio rerio*) embryos to water and methanol. *Cryobiology*, Vol. 37, pp. (13-21).

Zhang, X., Trokoudes, K.M. & Pavlides, C. (2009). Vitrification of biopsied embryos at cleavage, morula and blastocyst stage. *Reproductive Biomedicine Online*, Vol. 19, pp. (526-531).



Current Frontiers in Cryobiology

Edited by Prof. Igor Katkov

ISBN 978-953-51-0191-8

Hard cover, 574 pages

Publisher InTech

Published online 09, March, 2012

Published in print edition March, 2012

Almost a decade has passed since the last textbook on the science of cryobiology, *Life in the Frozen State*, was published. Recently, there have been some serious tectonic shifts in cryobiology which were perhaps not seen on the surface but will have a profound effect on both the future of cryobiology and the development of new cryopreservation methods. We feel that it is time to revise the previous paradigms and dogmas, discuss the conceptually new cryobiological ideas, and introduce the recently emerged practical protocols for cryopreservation. The present books, "Current Frontiers in Cryobiology" and "Current Frontiers in Cryopreservation" will serve the purpose. This is a global effort by scientists from 27 countries from all continents and we hope it will be interesting to a wide audience.

How to reference

In order to correctly reference this scholarly work, feel free to copy and paste the following:

Wai Hung Tsang and King L. Chow (2012). Cryopreservation of Embryos from Model Animals and Human, *Current Frontiers in Cryobiology*, Prof. Igor Katkov (Ed.), ISBN: 978-953-51-0191-8, InTech, Available from: <http://www.intechopen.com/books/current-frontiers-in-cryobiology/cryopreservation-of-embryos-of-model-animals-and-human>

INTECH
open science | open minds

InTech Europe

University Campus STeP Ri
Slavka Krautzeka 83/A
51000 Rijeka, Croatia
Phone: +385 (51) 770 447
Fax: +385 (51) 686 166
www.intechopen.com

InTech China

Unit 405, Office Block, Hotel Equatorial Shanghai
No.65, Yan An Road (West), Shanghai, 200040, China
中国上海市延安西路65号上海国际贵都大饭店办公楼405单元
Phone: +86-21-62489820
Fax: +86-21-62489821

© 2012 The Author(s). Licensee IntechOpen. This is an open access article distributed under the terms of the [Creative Commons Attribution 3.0 License](#), which permits unrestricted use, distribution, and reproduction in any medium, provided the original work is properly cited.