

Induction of Apoptosis in Human Cancer Cells by Human Eb- or Rainbow Trout Ea4-Peptide of Pro-Insulin-Like Growth Factor-I (Pro-IGF-I)

Maria J. Chen, Chun-Mean Lin and Thomas T. Chen

Department of Molecular and Cell Biology, University of Connecticut, Storrs, CT, USA

1. Introduction

Insulin-like growth factors (IGFs)-I and -II are members of the insulin family that play essential roles in regulating growth, development and metabolism in all vertebrates (de Pablo et al., 1990, 1993; Stewart and Rotwein, 1996). Like many peptide hormones, IGFs are initially produced as pre-pro-hormones containing an amino-terminal signal peptide, followed by the mature peptide of B, C, A, and D domains, and a carboxyl terminal E-domain. Via post-translational processing, the signal peptide and the E-peptide are proteolytically cleaved off from the pre-pro-peptide, and both the mature IGFs and E-peptides are secreted into the circulation (Rotwein et al., 1986; Duguay 1999). From molecular characterization of IGF-I gene and its transcription products, multiple isoforms of IGF-I mRNA were identified from fish to mammals. In human, three different species of IGF-I mRNAs which encode three isoforms of pro-IGF-I (i.e., pro-IGF-Ia, -Ib and Ic) were identified (Rotwein et al., 1986; Duguay 1995). These three isoforms of pro-IGF-I contain an identical mature IGF-I with 70 amino acid residues (aa) and different E-peptides with 30 aa (Ea), 77 aa (Eb) and 40 aa (Ec), respectively. The a-type E-domains are highly conserved among vertebrates but the b-type E-peptides are conserved in the first 15 amino acids and different thereafter among human, rats and mice (variable region).

In fish, multiple isoforms of IGF-I transcripts have also been identified. These different isoforms of IGF-I transcripts encode an identical mature IGF-I but different E-peptides. Shamblott and Chen (1992, 1993) reported the presence of four different IGF-I transcripts encoding four different isoforms of pro-IGF-I for rainbow trout (*Oncorhynchus mykiss*). Similar to the isoforms of human pro-IGF-I, the four different isoforms of the rainbow trout pro-IGF-I contain an identical mature IGF-I (70 aa) and four different lengths of E-peptides (i.e., rtEa1, 35 aa; rtEa2, 47 aa; rtEa3, 62 aa; rtEa4, 74 aa). The first 15 amino acid residues of these four E-peptides are identical among themselves and the a-type E-peptides of mammals, and the 20 amino acid residues at the C-termini share 70% identity with their human counterparts. The rtEa1-peptide is composed of the first 15 and the last 20 amino acid residues. Insertion of either 12 or 27 amino acid residues between the first and the last segments of rtEa1-peptide results in rtEa2- or rtEa3-peptide, whereas insertion of both segments into rtEa1-peptide gives rise to rtEa4-peptide. Similar to rainbow trout, four different forms of Ea-peptides of pro-IGF-I have also been identified in Chinook salmon,

Coho salmon (Duguay et al., 1992; Willis and Devlin, 1993), and red drum (Faulk et al., 2010). However, not all teleosts possess four different E-peptides. While gilthead seabream possesses three different E-peptides (namely Ea1, Ea2 and Ea4), zebrafish and grouper each has only one Ea-peptide: Ea2-peptide in zebrafish and Ea4-peptide in grouper (Chen et al., 2001; Shi et al., 2002; Tiago et al., 2008).

Although the biological activity of the mature IGF-I has been extensively studied, the biological activity of E-peptides has been over-looked until recently. It was generally assumed that E-peptides of pro-IGF-I may be biologically inert; however the following lines of evidence suggest that E-peptides may possess biological activity. First, many peptide hormones are initially synthesized as complex pro-hormone molecules and following post-translational processing to generate multiple peptides with distinct or similar biological activities. Examples are pro-opiomelanocortin (Civelli et al., 1986), pro-glucaagon (Bell et al., 1983) and pro-insulin (Ido et al., 1997), just to name a few. In a similar manner, generation of E-peptides from pro-IGF-I may suggest a pluripotential role for these peptides. Second, the E-domains of pro-IGF-I are evolutionally conserved. Third, different isoforms of pro-IGF-I transcripts are expressed in a tissue-specific and developmental stage-specific manner, and exhibiting differential responses to growth hormone (Shablott and Chen 1993; Duguay 1994; Yang and Goldspink 2002). Siegfried et al. (1992) reported the first evidence that hEb-peptide contained biological activity. In their studies, Siegfried and colleagues showed that a synthetic peptide amide with 23 amino acid residues (Y-23-R-NH₂) of the hEb-peptide (a.a. 103-124) at 2-20 nM exerted mitogenic activity in normal and malignant human bronchial epithelial cells. They further demonstrated that Y-23-R-NH₂ bound to specific high affinity receptors ($K_d = 2.8 \pm 1.4 \times 10^{-11}M$) present at $1-2 \times 10^4$ binding sites per cell and the ligand binding was not inhibited by recombinant insulin or IGF-I. Several investigators have reported recently that the Eb-peptide of rodent pro-IGF-I peptide (same sequence as hEc-peptide) possessed activity in promoting proliferation of rodent myoblasts, whereas Ea-peptide stimulated differentiation of mature myoblasts (Yang and Goldspink 2002; Matheny et al., 2010). Besides exerting mitogenic activity in rodent myoblasts by rodent Eb-peptide, murine Ea-peptide of pro-IGF-I also modulates the entry of mature IGF-I protein into C2C12, a murine skeletal muscle cell line (Pfeffer et al., 2009).

Evidence documenting the biological activity of E-peptides of rainbow trout pro-IGF-I came from studies conducted by Tian et al. (1999). Tian et al. reported that recombinant rtEa2-, rtEa3- and rtEa4-peptides but not Ea1-peptide exhibited a dose dependent mitogenic activity in NIH 3T3 cells and carprine mammary gland epithelial cells (CMEC). Recently, Mark Chen in Taiwan also demonstrated that Ea2-peptide of zebrafish exerted a stimulatory effect on incorporation of ³⁵S-sulfate into zebrafish gill bronchial cartilage in a sulfation assay (personal communication). These results are consistent with those reported in mammals (Siegfried et al., 1992; Matheny et al., 2010; Yang and Goldspink 2002). Further studies conducted in our laboratory showed that both recombinant rtEa4- or synthetic hEb-peptide exerted unexpected anti-cancer cell activities in established human cancer cell lines such as MDA-MB-231, HT-29, HepG2, SK-N-F1, SKOV-3A, PC-3 and OVCAR-3B (Chen et al., 2002, 2007; Kuo and Chen 2002). These activities include: (i) induction of morphological differentiation and inhibition of anchorage-independent growth, (ii) inhibition of invasion and metastasis, and (iii) inhibition of cancer-induced angiogenesis.

Programmed cell death, i.e., apoptosis, is a crucial process of eliminating unwanted cells in animal life, and it is vital for embryonic development, homeostasis and immune defense (Elmore 2007, for review). Apoptosis is characterized by typical morphological and

biochemical hallmarks, such as cell shrinkage, nuclear DNA fragmentation and plasma membrane blebbing (Hengartner, 2000). Results of extensive studies revealed that two pathways, extrinsic pathway (death receptor triggered pathway) and intrinsic pathway (mitochondrial pathway) can lead to apoptosis (Hengartner, 2000; Fulda and Debatin, 2006). Furthermore, there is ample evidence indicating that these two pathways are linked, and molecules from one pathway can influence the other pathway. One striking feature of cancer cells is that they do not readily undergo apoptosis due to reduction of expression or mutation of pro-apoptotic genes such as caspase genes (Ghavani et al., 2009) while increasing expression of anti-apoptotic genes such as Bcl-2 family genes (Youle and Strasser, 2008). Certain anti-cancer drugs and agents which have been identified as potential effective cancer treatment can restore normal apoptotic pathways (Fulda and Debatin, 2006; Yang et al., 2008). Since rEa4- and hEb-peptides have been shown to possess anti-cancer activities in vitro in a variety of human cancer cells (Kuo and Chen, 2002; Chen et al., 2007), it would be of great interest to determine if these peptides can also induce apoptosis in human cancer cells. In this paper, we report that rEa4- and hEb-peptide of pro-IGF-I induces apoptosis in various human cancer cell lines via both extrinsic and intrinsic pathways.

2. Materials and methods

2.1 Cell culture

Single-cell subclones were isolated from the aggressive breast cancer cells (MDA-MB-231), ovarian cancer cells (OVCAR and SKOV), neuroblastoma cells (SK-N-SH and SK-N-F1) and non-cancerous foreskin cells (CCD-1112SK) [all purchased from ATCC, Mannassas, VA] were routinely maintained in F12/DMEM (Gibco-BRL, Rockville, MD) supplemented with 10% fetal bovine serum (FBS, Gibco-BRL) at 37°C under a humidified atmosphere of 5% CO₂. Each cell line was sub-cultured every 3 days.

2.2 Preparation of rEa4- and hEb-peptides

Recombinant rEa4-peptide, hEb-peptide and control protein were prepared following the method described by our laboratory (Tian et al., 1999; Kuo and Chen, 2002; Chen et al., 2007). Briefly, *E. coli* cells, transformed with an expressing vector pET-15b (Novagen, EMD Chemicals, Gibbstown, NJ) containing the coding sequence of rEa4-peptide or hEb-peptide, were cultured in 5 ml of LB broth for 4 h, diluted to 500 ml LB broth and allow the culture to grow at 37 °C. The culture was induced with 1 mM isopropyl β-D-thiolactopyranoside (IPTG) at an OD₆₀₀ of 0.6-0.8 for 2 h. Induced cells were harvested by low speed centrifugation and resuspended in 10 ml of a binding buffer (50 mM imidazole, 0.5 M NaCl, 20 mM Tris-HCl, pH 7.9). Following ultrasonication, the cell lysate was obtained by centrifugation at 39,000g for 20 min. The recombinant protein, containing His-tags, was isolated by affinity chromatography on His-bind resin (Novagen) and followed by extensive dialysis in 1X PBS buffer to remove imidazole. The purity of the recovered recombinant protein was accessed to be about 80% by electrophoresis on SDS-polyacrylamide gels. The control protein was prepared from *E. coli* cells harboring the backbone of the expression vector without E-peptide insert following the same method as described above.

2.3 Microscopic observation of apoptotic cells induced by recombinant rEa4-peptide

Cancer cells (MDA-MB-231C and SKOV-3A) in serum free medium were treated with various concentrations (1.4 μM or 2.8 μM) of recombinant rEa4-peptide or control protein

for 2 h, and were observed under an inverted phase contrast microscope (Olympus IX50) to determine apoptotic cells. SKOV-3A cells, after treated with 1.5 μM or control protein for 3 days, were stained with H33258 and observed under an inverted phase contrast microscope (Olympus IX50).

MDA-MB-231C cells in serum free medium were treated with rtEa4-peptide (3.0 μM) or same concentration of control protein for 48 h. One sample was treated with H_2O_2 for 16 h to induce apoptosis to serve as a positive control. TUNEL assay was carried out following the protocol supplied by the manufacturer (Roche Diagnostics Corp., Indianapolis, IN). MDA-MB-231C cells treated with rtEa4-peptide or control protein were stained with Rodamine Red labeled mono-specific polyclonal rabbit anti-activated capase 3 immunoglobulin (Bioscience Resource Project, South San Francisco, CA) following conditions provided by the manufacturer. All images were observed under an inverted microscope (Olympus IX50) equipped with epifluorescence attachment.

2.4 Quantitative relative real-time RT-PCR analysis

Cancer cells (MDA-MB-231C, SKOV-3A, OVCAR-3B, SK-N-SH, and SK-N-F1) and non-immortalized foreskin cells (CCD-1112SK) were treated with recombinant rtEa4-peptide (2.0 μM), hEb-peptide (0.5 μM) or control protein for 6 h and RNA samples were prepared from these cells using Trizol reagent following the manufacturer's protocol (Invitrogen, Carlsbad, CA). Each RNA sample was treated with RNase-free DNase to remove any DNA contamination during isolation. To confirm that the RNA samples were free of DNA contamination, RNA samples were used as templates for direct amplification of β -actin sequence without prior reverse transcription. One microgram of total RNA was reverse transcribed in a 20 μl reaction volume, containing 100 ng of oligo(dT)₁₈, 10 nM dNTP, 200mM DTT, 1 x reverse transcription buffer, and 1 μl SuperScrip^R III reverse transcriptase (Invitrogen) for 90 min at 42 °C, and the reverse transcription product was diluted to 100 μl with buffer. The PCR reaction was carried out in a 96-well plate with a final volume of 20 μl per well. The reaction mixture consists 1 X Sso fast EvaGreen Supermix (BioRad) containing Sso7d-fusion polymerase (BioRad), 500 nM of each forward and reverse primers (Table 1), and 4 μl of cDNA products. The amplification profile is as the following: 1 cycle of 95 °C for 2 min, 40 cycles of 95 °C for 2 sec and 60 °C for 10 sec annealing and synthesis (conditions provided by BioRad). The cycle threshold, CT, was determined from the fluorescence value which was 10 times the mean standard deviation of fluorescence of the base line cycles, and the efficiency of amplification in all of the genes determined is 95-98%. The relative expression was determined using the arithmetic formula:

$2^{-[(\text{SACT}-\text{CACT})]}$, where SACT is the difference in CT values between the gene of interest in cells treated with rtEa4- or hEb-peptide and the house keeping gene (hGAPDH) in the sample, and CACT is the difference in CT values between the gene of interest in cells treated with control protein and the housekeeping gene (hGAPDH) of the control sample. Each experiment was repeated three times (n=3).

3. Results and discussion

Earlier studies conducted in our laboratory showed that recombinant rtEa4- or synthetic hEb-peptide of pro-IGF-I inhibited anchorage-independent growth and invasion of established human breast cancer cells (MDA-MB-231C), colon cancer cells (HT-29), ovarian cancer cells

(OVCAR-3A and SKOV-3B), neuroblastoma cells (SK-N-F1), human hepatoma cells (HepG-2) and rainbow trout hepatoma cells (RTH) in vitro (Chen et al., 2002; Kuo and Chen 2002). Chen et al. (2007) also showed that seeding of aggressive human breast cancer cells (MDA-MB-231C) onto the chorioallantoic membrane (CAM) of five-day old chicken embryos resulted in rapid growth of MDA-MB-231C cells into cancer nodules, invasion of the cancer cells and induction of the blood vessel formation in and around the cancer mass. The growth, invasion and angiogenesis by MDA-MB-231C cells on the chicken CAM was inhibited by treatment with a single or multiple doses rtEa4 or hEb-peptide. By microarray and quantitative relative real-time RT-PCR analyses, Chen et al. (2007) have further shown that a group of genes related to cancer cell activities were up- or down-regulated in MDA-MB-231C cells transfected with a cDNA encoding rtEa4-peptide. Together, these results suggest that rtEa4-or hEb-peptide may be developed as therapeutics for treating human cancers.

Gene	Sequence	Amplification Size (bp)
hGAPDH	(Fd): 5'GAAGGTGAAGGTCGGAGT-3' (Re): 5'-GAAGATGGTGATGGGATTTC-3'	207
hBcl-XL	(Fd): 5'-GCCACTTACCTGAATGACCACC-3' (Re): 5'-GGGAGGGTAGAGTGGATGGTCAG-3'	222
hCaspase-8	(Fd): 5'-GGTCTCACTCTGTTGCCCA-3' (Re): 5'-CAGGCGGATCACTTGAGGTC-3'	223
hCaspase-9	(Fd): 5'-GGGACAGATGAATGCCGTGGA-3' (Re): 5'-GGCACCACCTCAGGAAGACGC-3'	229
hFADD	(Fd): 5'-CAGAGCGTGTGCGGGAGTC-3' (Re): 5'-GCTTCGAGGTTAGATGCGTC-3'	208
hMCL-1	(Fd): 5'-AGGAGGAGGGAGTGGTGGG-3' (Re): 5'-GTCCCTAACCTTCCTGGCACA-3'	279
hTRAIL-R1	(Fd): 5'-GCTGTTGTGGCTGTGCTGA-3' (Re): 5'-CAGAGACGAAAGTGGACAGCGA-3'	179
hCytochromeC	(Fd): 5'-GGCAGGCAGATCACTTGAGG-3' (Re): 5'-TCACTCGTCACCCAGGCTTG-3'	220
hBcl-2A	(Fd): 5'-TCCGACCCTAATTGCCAAGC-3' (Re): 5'-TCTCCCAGCCTCCAGCAGC-3'	176
hCaspase-3	(Fd): 5'-GCAATAAATGAATGGGCTGAG-3' (Re): 5'-GCGTATGGAGAAATGGGCTG-3'	139
P53	(Fd): 5'-CCCAGCCAAAGAAGAAACCA-3' (Re): 5'-CTCGGAACATCTCGAAGCG-3'	81
hPTEN	(Fd): 5'-CAAGATGATGTTTGAACCTATTCCAATG-3' (Re): 5'-CCTTTAGCTGGCAGACCACAA-3'	77

Table 1. Gene specific primers used in comparative real-time RT-PCR analysis

Cancer cells do not undergo apoptosis because they bypass apoptosis through a series of complex mechanisms involving dynamic interplays between cancer causing genes, oncogens, and/or mutated suppressor genes (Fulda and Debatin, 2004; Lowe and Lin, 2000). Apoptosis dysregulation in many cancers is one of the major hindrances towards the destruction of cancers in cancer therapy. Therefore, drugs and agents which can restore the normal apoptosis signaling pathways are considered as effective therapeutic agents for treating cancers (Evan and Vousden, 2001; Finkel 1999; Max 2002). Since rtEa4- or hEb-peptide suppresses anchorage-independent growth, invasion and angiogenesis of many different cancer cells in vitro (Chen et al., 2002, 2007; Chen and Kuo, 2002), it would be of

great interest to know whether the protein can induce apoptosis in cancer cells. Treatment of ovarian cancer cells (SKOV-3A) or breast cancer cells (MDA-MB-231C) cells with recombinant rtEa4-peptide (1.4 and 2.8 μM) for 2 h, many cells exhibited distinct morphology of membrane blebbing, cell shrinkage, and chromatin condensation and disintegration (Fig 1). These morphological characteristics are consistent with those reported for apoptosis (Hacker 2000, for review). While these morphological changes in the rtEa4-peptide treated cells were further enhanced with time, no such morphological changes were observed in untreated cells or cells treated with control protein even after 48 h of culture. To confirm that rtEa4-peptide treated cancer cells exhibited apoptosis, MDA-MB-231C cells were treated with 3.0 μM of recombinant rtEa4-peptide for 48 h, and the treated cells were subjected to TUNEL assay or immuno-cytochemical staining with a mono-specific antibody against activated caspase 3. As shown in Figure 2, after incubation for 48 h in a serum free medium containing 3.0 μM of recombinant rtEa4-peptide, most of the cells showed positive in TUNEL assay (Fig 2A) as well as in immuno-cytochemical staining for activated caspase 3 (Fig 2B). Furthermore, apoptosis was also observed in ovarian cancer cells, SKOV 3A, treated with 1.5 μM of recombinant rtEa4-peptide (Fig 3). These results confirmed that rtEa4-peptide induced apoptosis in human breast cancer cells and ovarian cancer cells.

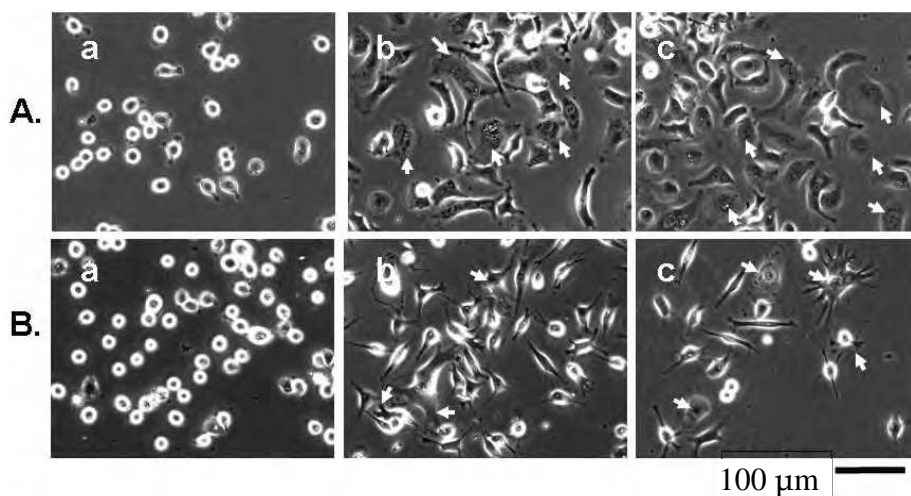


Fig. 1. Induction of apoptosis in ovarian cancer cells (A, SKOV-3A) and breast cancer cells (B, MDA-MB-231C) by recombinant rtEa4-peptide. Cancer cells in serum free medium were treated with or without rtEa4-peptide for 2 h, and observed under an inverted phase contrast microscope (Olympus IX50). a, control protein; b, 1.4 μM rtEa4-peptide; c, 2.8 μM rtEa4-peptide. Arrows indicate apoptotic cells.

Generally speaking, apoptosis can be stimulated via extrinsic and intrinsic pathways. Does rtEa4-peptide or hEb-peptide induce apoptosis in cancer cells via both extrinsic and intrinsic pathways? It has been reported by many investigators that if apoptosis is induced via extrinsic pathway, up-regulation of expression of *TRAIL-RI*, *FADD* and *pro-Casp-8* genes will be observed. On the other hand, if apoptosis is induced via intrinsic pathway, down-regulation of expression of *Bcl-2*, *Bcl-XL* and *Mcl-1* genes and up-regulation of expression of

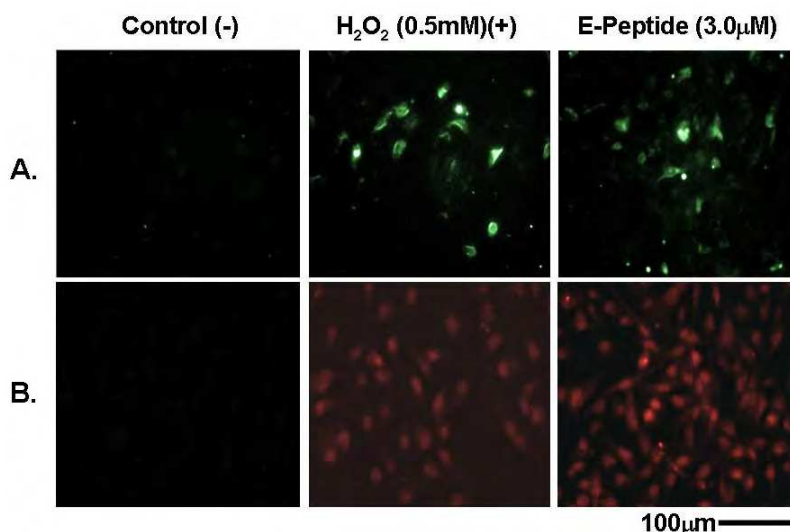


Fig. 2. Apoptotic cells identified by TUNEL assay (A) and immunostaining with mono-specific antibody to activated capase-3 (B). MDA-MB-231C cells in serum free medium were treated with (3.0µM) rtEa4-peptide or control protein for 48 h. One sample was treated with H₂O₂ for 16 h to induce apoptosis as a positive control. TUNEL assay was carried out following the protocol supplied by the manufacturer. Monospecific polyclonal rabbit anti-activated caspase 3 immunoglobulin was labeled with Rodamine Red and used to stain recombinant rtEa4 peptide treated or positive control cells. The immuno-stained cells were observed under an inverted microscope (Olympus IX50) with epifluorescence attachment.

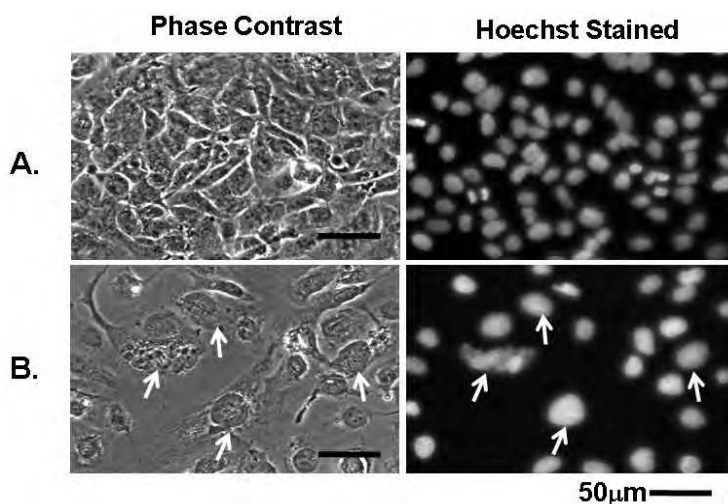
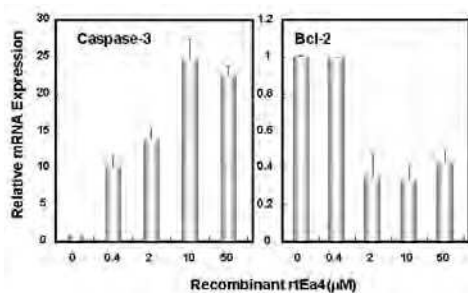
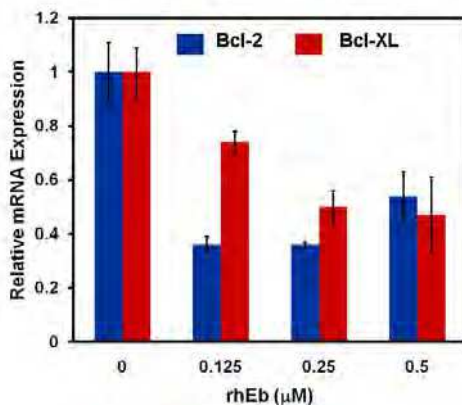


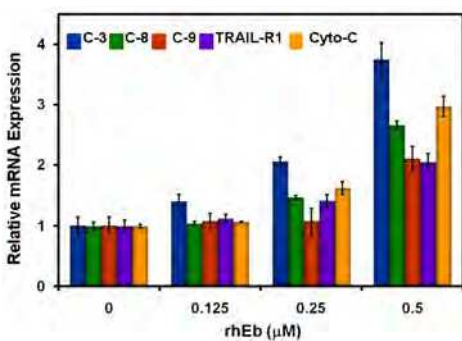
Fig. 3. Induction of apoptosis in ovarian cancer cells (SKOV-3A) by rtEa4-peptide. SKOV-3A cells in serum free medium were treated with control protein (A) or 1.5 µM of rtEa4-peptide (B) for 3 d, and cells were stained with H33258. Arrows indicate apoptotic cells.



A



B



C

Fig. 4. Effect of recombinant rEa4- (A) or hEb-peptide (B and C) on levels of Casp-3, Casp-8, Casp-9, TRAIL-R1 and Cyt-C mRNAs in MDA-MB-231C cells. MDA-MB-231C cells in serum free medium were treated with various concentrations of recombinant rEa4- or hEb-peptide for 6 h, and total RNA samples were isolated from the treated cells. The levels of mRNA were determined by quantitative relative real-time RT-PCR analysis. The level of GAPDH mRNA was used as an internal control. Relative Expression Level = $2^{-(\Delta\Delta CT)}$, where $\Delta\Delta CT$ is the difference between the CT number of the sample (cancer cells treated with E-peptide) and GAPDH, and the ΔCT is the difference between the CT of cancer cells without E-peptide treatment and the CT of GAPDH. Error bars indicate standard deviation (n=3).

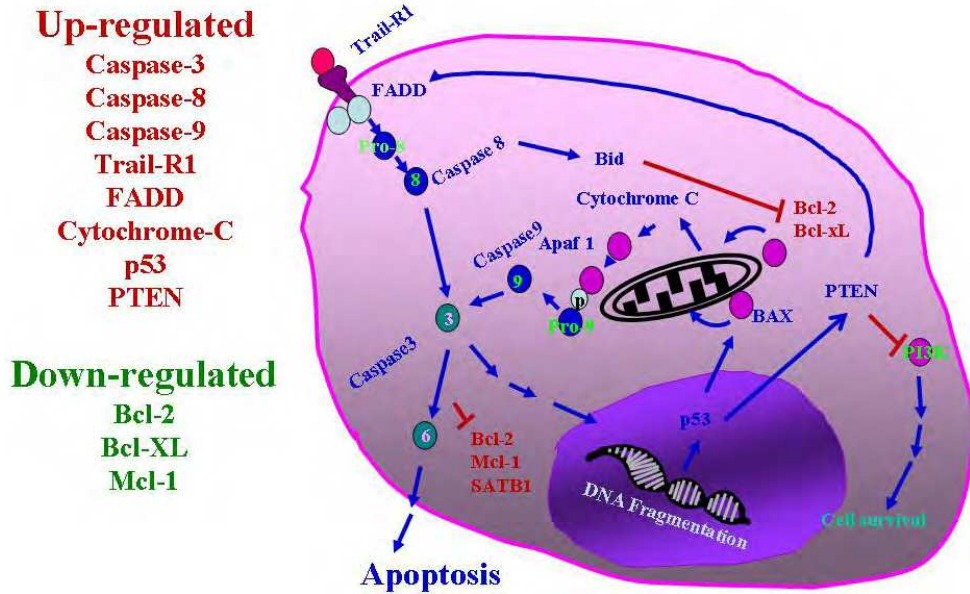


Fig. 5. A schematic presentation of extrinsic and intrinsic pathways of apoptosis. Apoptosis can be initiated via stimulation at the plasma membrane by death receptor (extrinsic pathway) or at mitochondria (intrinsic pathway). Stimulation of death receptors will result in aggregation and recruitment of the adaptor molecule Fas-associated protein with death domain (FADD) and pro-caspase 8. Upon recruitment, pro-caspase 8 is activated to caspase 8 and initiates apoptosis by direct activating downstream caspases (caspases 3 and 9). Intrinsic pathway is initiated by a variety of stress stimuli in which the mitochondrial membrane permeability is regulated by balance of opposing action of pro-apoptotic and antiapoptotic Bcl family members (Bax, Bak, Bcl2, Bcl-XL and Mcl-1). Following mitochondrial permeabilization, mitochondrial proapoptotic proteins such as cytochrome C, Samc/Diablo, Omi/HrtA2, AIF and Endo G are released via transmembrane channels across the mitochondrial outer membrane. This figure was redrawn from information provided by Fulda and Debatin (2006).

Cyt-C gene will be observed (Figure 5) (Fulda and Debatin, 2006; O'Brien and Kirby, 2008 for review). Therefore, to address the question whether rtEa4-peptide and hEb-peptide can induce apoptosis in cancer cells through both extrinsic and intrinsic pathways, levels of Bcl-2, Bcl-XL, Casp-3, Casp-8, Casp-9, TRAIL-R1 and *Cyt-C* mRNAs were measured by quantitative relative real-time RT-PCR analysis in MBA-MD-231C cells following treatment with recombinant rtEa4- or hEb-peptide. As shown in Figures 4A, 4B and 4C, upon treatment of MDA-MB-231C cells with various doses of recombinant rtEa4- or hEb-peptide, a dose-dependent up-regulation on levels of Casp-3, Casp-8, Casp-9, TRAIL-R1 and *Cyt-C* mRNAs and a dose-dependent down-regulation on levels of Bcl-2 and Bcl-XL mRNAs were observed. These results suggest that E-peptide may induce apoptosis in breast cancer cells via both extrinsic and intrinsic pathways. To further confirm that rtEa4- or hEb-peptide can also induce apoptosis in other cancer cells, human ovarian cancer cells (OVCAR-3A, SKOV-

3B), neuroblastoma cells (SK-N-SH and SK-N-F1) and non-cancerous foreskin cells (CCD-1112SK) were treated with 2.0 μ M of rtEa4-peptide or 0.5 μ M hEb-peptide for 6 h and RNA samples were extracted for determination of levels of Bcl-2, Bcl-XL, Mcl-1, Casp-3, Casp-8, Casp-9, TRAIL-R1, FADD, Cyt-C, p53 and PTEN mRNAs by quantitative relative real-time RT-PCR analysis. As shown in Table 2, while the levels of Bcl-2, Bcl-XL and Mcl-1 mRNAs in rtEa4-peptide or hEb-peptide treated cancer cells were down-regulated significantly, those of Casp-3, Casp-8, Casp-9, TRAIL-R1, FADD, Cyt-C, p53 and PTEN mRNAs were up-regulated. Results presented in Table 2 not only provide a strong evidence to support the hypothesis that rtEa4- or hEb-peptide induces apoptosis in cancer cells via both extrinsic and intrinsic pathways, but also confirm the notion that E-peptide can induce apoptosis in many cancer cells other than MBA-MD-231C cells.

Genes	Cell Lines (Relative Expression Levels)						
	rtEa4 (2 μ M)						hEb (0.5 μ M)
	CCD-1112SK*	MDA-MB-231C	OVCA9-3B	SKOV-3A	SKNSH	SKNF1	MDA-MB-231C
Bcl-2	1.08 \pm 0.55	0.19 \pm 0.03	0.66 \pm 0.10	0.20 \pm 0.05	0.79 \pm 0.34	0.08 \pm 0.02	0.54 \pm 0.09
Bcl-XL	0.96 \pm 0.04	0.33 \pm 0.00	0.49 \pm 0.01	0.21 \pm 0.01	0.50 \pm 0.04	0.18 \pm 0.00	0.47 \pm 0.14
Mcl-1	0.92 \pm 0.04	0.60 \pm 0.00	0.29 \pm 0.01	0.15 \pm 0.02	0.38 \pm 0.08	0.07 \pm 0.01	-
Casp-3	0.96 \pm 0.12	3.48 \pm 0.27	26.07 \pm 2.50	12.18 \pm 2.61	3.32 \pm 0.10	13.91 \pm 1.81	3.75 \pm 0.28
Casp-8	0.91 \pm 0.03	3.74 \pm 0.28	2.44 \pm 0.04	2.67 \pm 0.06	5.49 \pm 0.56	7.96 \pm 0.01	2.66 \pm 0.07
Casp-9	1.08 \pm 0.01	2.18 \pm 0.10	3.13 \pm 0.021	1.98 \pm 0.02	6.16 \pm 0.18	8.70 \pm 1.12	2.11 \pm 0.2
TRAIL-R1	1.01 \pm 0.11	2.04 \pm 0.16	2.24 \pm 0.01	1.37 \pm 0.06	6.50 \pm 0.16	7.47 \pm 0.78	2.05 \pm 0.14
FADD	1.04 \pm 0.11	3.61 \pm 0.09	1.42 \pm 0.03	2.67 \pm 0.03	3.31 \pm 0.05	8.33 \pm 1.14	1.49 \pm 0.22
Cyt-C	1.02 \pm 0.05	2.54 \pm 0.18	1.40 \pm 0.00	1.72 \pm 0.01	4.31 \pm 1.02	10.59 \pm 8.20	2.97 \pm 0.17
p53	1.08 \pm 0.06	2.37 \pm 0.05	3.09 \pm 0.29	1.03 \pm 0.51	3.99 \pm 0.47	6.93 \pm 1.75	1.57 \pm 0.03
PTEN	--	8.30 \pm 0.73	--	4.61 \pm 0.11	4.09 \pm 0.20	30.80 \pm 0.15	--

Relative Expression Level $2^{-[(\Delta\Delta CT)]}$ and standard deviation (n=3) where $\Delta\Delta CT$ is the difference between the CT number of the sample (cancer cells treated with E-peptide) and the house keeping gene (GAPDH), and the ΔCT is the difference between the CT of cancer cells without E-peptide treatment and the CT of GAPDH $2^{-[(\Delta\Delta CT)]} > 1$, up-regulation; $2^{-[(\Delta\Delta CT)]} < 1$, down-regulation *CCD-1112SK, non-immortalized human fibroblast cells.

Table 2. Relative Expression Levels of Apoptosis Genes by E-peptide of Pro-IGF I

It is very interesting to note that treatment of non-cancerous foreskin cells (CCD-1112SK) with the same concentration of recombinant rtEa4-peptide or hEb-peptide (result not shown) did not result in significant changes in the levels of Bcl-2, Bcl-XL, Mcl-1, Casp-3, Casp-8, Casp-9, TRAIL-R1, FADD, Cyt-C, p53 and PTEN mRNAs when compare to non-treatment control (Table 2). This observation suggests that rtEa4- or hEb-peptide only induces apoptosis in cancer cells. The resistance of cancer cells to apoptosis is one of the major concerns in cancer therapy. So in searching for effective chemotherapeutic drugs, the

effectiveness of the drugs to induce apoptosis in a wide variety of cancer types will be the top choice. Although there are numerous chemotherapeutic drugs available on the market that have been shown to induce apoptosis in cancer cells, unfortunately these drugs also induce apoptosis in non-cancerous cells. In this study we have shown that rEa4- or hEb-peptide can induce apoptosis in a variety of human cancer cells but not in non-cancerous cells. Therefore, we believe that rEa4- or hEb-peptide could be developed as an ideal therapeutic agent for treating human cancers.

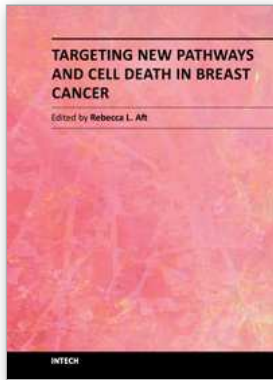
4. Acknowledgement

This work was supported by funds from US Department of Agriculture (CONS-9803641) to T.T.C.

5. References

- Bell GI, Sanchez-Pescador R, Laybourn PJ, Najarian RC. 1983. Exon duplication and divergence in the human preproglucagon gene. *Nature* 304:716-718.
- Chen MHC, Lin GH, Gong HY, Weng CF, Chang CY, Wu JH. 2001. The characterization of prepro-insulin-like growth factor-I Ea-2 expression and insulin-like growth factor-I genes (devoid 81 bp) in the zebrafish (*Danio reio*). *Gene* 268:67-75.
- Chen MJ, Kuo Ya Huei, Tian XC, Chen TT. 2002. Anti-tumor activities of pro-IGF-I E-peptides: studies on morphological changes, anchorage-dependent cell division, and invasiveness in tumor cells. *Gen. Comp. Endocrinol.* 126:342-351.
- Chen MJ, Chiou PP, Lin P, Lin C-M, Siri S, Peck K, Chen TT. 2007. Suppression of growth and cancer-induced angiogenesis of aggressive human breast cancer cells (MDA-MB-231) on the chorioallantoic membrane of developing chicken embryos by E-peptide of pro-IGF-I. *J Cell Biochem* 101:1316-1327.
- Civelli O, Douglass J, Rosen H, Martens G, Herbert E. 1986. Biosynthesis of opioid peptides. In "Opioid Peptides: Molecular Pharmacology, Biosynthesis, and Analysis (ed by Rapaka RS and Hawaks RL) NDA Research Monograph 70:21-34.
- de Pablo F, Scott LA, Roth J. 1990. Insulin and insulin-like growth factor I in early development: peptides, receptors and biological events. *Endocr Rev* 11:558-577.
- de Pablo F, Perez-Villami B, Serna J, Gonzalez-Guerrero PR, Lopez-Carranza A, de la Rosa EJ, Alemany J, Caldes T. 1993. IGF-I and the IGF-I receptor in development of nonmammalian vertebrates. *Mol Repro Deve* 35:427-432; discussion 432-433.
- Duguay SJ, Park LK, Samadpour M, Dickhoff WW. 1992. Nucleotide sequences and tissue distribution of three different insulin-like growth factor I prohormone in salmon. *Mol Endocr* 6: 1202-1210.
- Duguay SJ. 1999. Post-translational processing of insulin-like growth factors. *Horm Metab Res* 31:43-49.
- Elmore S. 2007. Apoptosis: A review of programmed cell death. *Toxicol Pathol* 35:495-516.
- Evan GI, Vousden KH. 2001. Proliferation, cell cycle and apoptosis in cancer. *Nature* 411:342-348.
- Finkel E. 1999. Does cancer therapy trigger cell suicide? *Science* 286:2256-2258.
- Fulda S, Debatin KM. 2004. Apoptosis signaling in tumor therapy. *Ann N Y Acad Sci* 2004 1028: 150-156.
- Fulda S, Debatin K-M 2006. Extrinsic versus intrinsic apoptosis pathways in anticancer chemotherapy. *Oncogene* 25: 4798-4811.

- Faulk CK, Perez-Dominguez R, Webb Jr KA, Holt GJ. 2010. The novel finding of four distinct prepro-IGF-I E domains in a perciform fish, *Sciaenops ocellatus*, during ontogeny. *Gen Comp Endocr* 169:75-81.
- Hacker G. 2000. The morphology of apoptosis. *Cell Tissue Res* 301:5-17.
- Hengartner MO. 2000. The biochemistry of apoptosis. *Nature* 407:770-776.
- Ghavami S, Hashemi M, Ande SR, Yeganeh B, Xiao W, Eshraghi M, Bus CJ, Kadkhoda K, Wiechec E, Halayke AJ, Los M. 2009. Apoptosis and cancer: mutation with caspase genes. *J Med Genet* 46: 497-510.
- Ido Y, Vindigni A, Chang K, Stramm L, Chance R, Heath WF, DiMarchi RD, Di Cera E, Williamson JR. 1997. Prevention of vascular and neural dysfunction in diabetic rats by C-peptide. *Science* 277:563-566.
- Kuo YH, Chen TT. 2002. Novel activities of pro-IGF-I E-peptides: regulation of morphological differentiation and anchorage-independent growth in human neuroblastoma cells. *Exp Cell Res* 280:75-89.
- Lowe SW, Lin AW. 2000. Apoptosis in cancer. *Carcinogenesis* 21:485-495.
- Matheny RW Jr, Nindl BC, Adamo ML. 2010. Minireview: mechano factor: a putative product of IGF-I gene expression involved in tissue repair and regeneration. *Endocrinology* 151: 865-875.
- Marx J. 2002. Cancer research obstacle for promising cancer therapy. *Science* 295:1444.
- O'Brien, MA, Kirby R. 2008. Apoptosis: a review of pro-apoptotic and anti-apoptotic pathways and dysregulation in disease. *J Vet. Emergency and Crit Care* 18: 572-586.
- Pfeffer LA, Brisson, BK, Lei H, Barton ER. 2009. The insulin-like growth factor (IGF)-I E-peptides modulate cell entry of the mature IGF-I protein. *Mol Biol Cell* 20:3810-3817.
- Rotein P, Pollock KM, Didier DK, Krivi GG. 1986. Organization and sequence of the human insulin-like growth factor I gene: Alternative RNA processing produces two insulin-like growth factor I precursor peptides. *J Biol Chem* 261:4828-4832.
- Shamblott MJ, Chen TT. 1992. Identification of a second insulin-like growth factor in a fish species. *Proc Natl Acad Sci USA* 89:8913-8971.
- Shamblott MJ, Chen TT. 1993. Age-related and tissue-specific levels of five forms of insulin-like mRNA in a teleost. *Mol Mar Biol Biotechnol* 2:351-361.
- Shi FT, Li WS, Bai CH, Lin HR. 2002. IGF-I of orange spotted grouper *Epinephelus coioides*: cDNA cloning, sequencing and expression in *Escherichia coli*. *Fish Physiol Biochem* 27:147-156.
- Siegfried JM, Kasprzyk PG, Treston AM, Mulshine JL, Quinn KA, Cuttitta F. 1992. A mitogenic peptide amide encoded within the E-peptide domain of the insulin-like growth factor IB prohormone. *Proc Natl Acad Sci USA* 89:8107-8111.
- Stewart CE, Rotwein P. 1996. Growth, differentiation, and survival: multiple physiological functions for insulin-like growth factors. *Physiol Rev* 76:1005-1026.
- Tiago DM, Laize V, Cancela ML. 2008. Alternatively spliced transcripts of *Sparus aurata* insulin-like growth factor 1 are differentially expressed in adult tissues and during early development. *Gen Comp Endocrinol* 157:107-115.
- Wallis AE and Devlin RH. 1993. Duplicate insulin-like growth factor-I genes in salmon display alternative splicing pathways. *Mol Endocr* 7:409-422.
- Yang SY, Goldspink G. 2002. Different roles of the IGF-I E peptide (MGF) and mature IGF-I in myoblast proliferation and differentiation. *FEBS Letters* 522:156-160.
- Yang SY, Sales KM, Fuller BJ, Seifalian AM, Winslet MC. 2008. Inducing apoptosis of human colon cancer by an IGF-I D domain analogue peptide. *Molecular Cancer* 7: 17-28.
- Youle RJ, Strasser A. 2008. The BCL-2 protein family: opposing activities that mediate cell death. *Nature Reviews / Molecular Cell Biology* 9: 47-59.



Targeting New Pathways and Cell Death in Breast Cancer

Edited by Dr. Rebecca Aft

ISBN 978-953-51-0145-1

Hard cover, 190 pages

Publisher InTech

Published online 29, February, 2012

Published in print edition February, 2012

This book presents novel and interesting findings by multiple accomplished investigators in breast cancer. These chapters elucidate new mechanisms of breast cancer cell death as well as discuss new pathways for therapeutic targeting.

How to reference

In order to correctly reference this scholarly work, feel free to copy and paste the following:

Maria J. Chen, Chun-Mean Lin and Thomas T. Chen (2012). Induction of Apoptosis in Human Cancer Cells by Human Eb- or Rainbow Trout Ea4-Peptide of Pro-Insulin-Like Growth Factor-I (Pro-IGF-I), Targeting New Pathways and Cell Death in Breast Cancer, Dr. Rebecca Aft (Ed.), ISBN: 978-953-51-0145-1, InTech, Available from: <http://www.intechopen.com/books/targeting-new-pathways-and-cell-death-in-breast-cancer/induction-of-apoptosis-in-human-cancer-cells-by-or-human-eb-or-rainbow-trout-ea4-peptide-of-pro-insu>

INTECH

open science | open minds

InTech Europe

University Campus STeP Ri
Slavka Krautzeka 83/A
51000 Rijeka, Croatia
Phone: +385 (51) 770 447
Fax: +385 (51) 686 166
www.intechopen.com

InTech China

Unit 405, Office Block, Hotel Equatorial Shanghai
No.65, Yan An Road (West), Shanghai, 200040, China
中国上海市延安西路65号上海国际贵都大饭店办公楼405单元
Phone: +86-21-62489820
Fax: +86-21-62489821

© 2012 The Author(s). Licensee IntechOpen. This is an open access article distributed under the terms of the [Creative Commons Attribution 3.0 License](#), which permits unrestricted use, distribution, and reproduction in any medium, provided the original work is properly cited.