

# Contribution of X-Ray Spectroscopy to Marine Ecotoxicology: Trace Metal Bioaccumulation and Detoxification in Marine Invertebrates

Sabria Barka

*Research Unit of Marine and Environmental Toxicology, UR 09-03, University of Sfax,  
Institut Supérieur de Biotechnologie de Monastir,  
Tunisia*

## 1. Introduction

Among contaminants involved in pollution, metals are peculiar as they are natural components of the geosphere. Volcanic eruptions, soil leaching, anthropogenic inputs, constitute different sources of metal introduction in the aquatic environments, the sea being the final receptacle for toxic compounds (Ramade, 1992). Moreover, they are the only environmental pollutants that are not made nor degraded by Men but that are transported and transformed in various products that affect living organisms. Metals are present in the sea within its different compartments: water column, sediments and in marine biota, where they are accumulated from water or food. Some metals are so essential to living organisms that when their availability is limited, the process of life development may be negatively affected. In fact, beyond a given threshold, all metals, whether essential or not, may have toxicological and ecotoxicological effects. Toxic effects may impair numerous biological and physiological processes, leading to animal death and threatening of species conservation. The energy costs associated with excreting and/or detoxifying the ingested/assimilated metals may decrease growth and reproduction with negative consequence on population density and on ecological intra and inter-specific relations.

Aquatic organisms accumulate metals to concentrations several folds higher than those in the surrounding medium (Bryan, 1979; Rainbow et al., 1990). However, metal bioaccumulation per se is not necessarily an indication of adverse effects (Campbell & Tessier, 1996) and knowledge of the physiological processes of accumulation and detoxification is needed to understand the significance of accumulated trace metal concentrations in marine animals collected from contaminated areas, especially in the frame of biomonitoring programs (Rainbow, 1993; 1997). Metal bioaccumulation in organisms is a natural physiological process or a consequence of an accidental surcharge. In both cases, common cellular structures involved in metal sequestration are requested (Jeantet et al., 1997). Cells have various biological ligands, such as metalloproteins, to which metals can bind, on the one hand, and their organelles (ie lysosomes, endoplasmic reticulum) are involved in metal sequestration (Ballan-Dufrançais, 1975; Brown, 1982; Mason & Jenkins, 1995; Nott & Nicolaidou, 1989a; Simkiss & Taylor, 1995; Raimundo et al., 2008; Simkiss & Masson, 1983). Total metal body burden may reflect the presence of inert particles

mineralized (the so-called granules) within tissues and cells which are no longer involved in metabolism. Generally, metal bioaccumulation studies in marine invertebrates give quantitative data on the tissular partitioning of metals (organotropism) but few of them consider the physico-chemical form in which metals are present within tissues or cells. However, these informations would improve our knowledge on cellular mechanisms involved in metal sequestration, storage and excretion as those mechanisms neutralize the toxicity of metals and could then be considered as detoxification processes.

The presence of metals in granules has been evidenced in marine invertebrate cells by microanalytical techniques (Nott, 1991). These techniques have been currently used in the field of geology, mineralogy, petrology, paleontology, environmental atmospheric analysis, marine chemistry etc. Although their applications are increasing in material sciences, such as semiconductors, thin film, nanoparticles and surfaces (Van Cappellen, 2004), these techniques have been rarely used in the field of biological sciences even if it is currently used in medical science since 1995 and particularly in toxicology (George, 1993; Börjesson & Mattsson, 2004).

The aims of this chapter are to present the potential use of X-Ray spectroscopy as an analytical tool in biological systems and its possible applications (combined with ultrastructural studies) in the field of ecotoxicology, while highlighting its important contribution to understand how marine invertebrates cope with environmental metals.

## 2. Trace metal bioaccumulation in marine invertebrates

Metals are naturally present in seawater in very low concentrations (Bruland, 1983). Major metals (Sodium, Magnesium) are present in an order of mmol Kg<sup>-1</sup>; minor metals (Lithium, Barium) in μmol to nmol Kg<sup>-1</sup> and trace metals (Copper, Zinc, Mercury, Cadmium, Lead) in pmol Kg<sup>-1</sup>. Metals are also present in sediments and in benthic biota (Bryan & Langston, 1992; Rainbow et al., 2011). Marine invertebrates are continuously exposed to variable concentrations of trace metals in seawater. There is a huge intra and inter-specific variability in metal accumulation among marine invertebrates. Metal accumulation occurs to different extent in individuals depending on the metal, its speciation, its bioavailability, and the considered species and biotic (body size, gender, molting, reproductive and developmental stage, and feeding habit...) and abiotic (temperature, salinity, pH...) factors (Marsden & Rainbow, 2004; Wang & Rainbow, 2008).

### 2.1 Background metal concentration

Metal concentrations in marine invertebrates collected from different natural areas show a considerable variation even in close phylogenetically related species (Table 1). As for essential metals, they are accumulated to fulfill metabolic requirement. Various proteins, enzymatic or not, require metals to be functional. The blood of marine invertebrates may contain respiratory pigments which bind to copper or iron. For example, annelids X-Ray microanalysis revealed the presence of Fe, Ca and small amounts of Zn. *Tubifex* hemoglobin also contained Cu and Pb (Rokosz & Vinogradov, 1982). The elemental mapping of several biological structures showed that different metals may also have a structural role as they can be constitutive of annelid jaws (Bryan & Gibbs, 1980; Gibbs & Bryan, 1980), crab cuticle (Schofield et al., 2009) or copepod exoskeleton (unpublished data). In fact, metals which are

essential for metabolic requirement can be theoretically estimated (Depledge, 1989; Pequegnat et al., 1969; White & Rainbow, 1985) and is necessary to identify these components when interpreting total essential metal concentration in invertebrate tissues or bodies or to identify a metal deficiency (Rainbow, 1993).

However, non essential metals such as silver or cadmium were also found in molluscs and crustaceans collected in non-polluted areas (Ballan-Dufrançais et al., 1982; Bustamante, 1998; Martoja et al., 1985; & Pétri, 1993). Their presence in animals could not be explained.

This illustrates the concept of metal background concentration which is considered as the typical metal concentration found in invertebrates collected from a habitat remote from anthropogenic inputs of metals (Rainbow, 1993). Evaluating background concentrations is necessary when invertebrates, collected from metal polluted areas, are used as biomonitors to know if metal concentrations have risen over a baseline in order to make realistic interpretations of the metal content in animals

## 2.2 Metal accumulation patterns

Aquatic invertebrates are able to cope with the pollution pressure of their environment due to the existence of different adaptive strategies which have been reviewed, for instance, by Mason and Jenkins (1995):

- they are able to limit the entrance of the contaminant into their body;
- they are able to balance uptake by an increased excretion, the total concentration in the organisms remaining constant;
- they are able to detoxify and store the metals which have entered the organism.

From an ecotoxicological point of view, and considering the fate and transport of metals in the marine environment, understanding metal uptake and excretion in invertebrates is important as these organisms may be exposed to very high levels of metals.

Experimental metal exposure of marine invertebrates, particularly well studied crustaceans, showed that these animals have developed different pattern of metal accumulation which vary within and between invertebrates depending on the metal and the species (Rainbow, 1998, 2002, 2007).

The first pattern, currently described in palaemonid decapod crustaceans, consists of a balance of the rate of zinc excretion to that of zinc uptake resulting in a regulation of this metal as its body concentration is maintained relatively constant (Rainbow, 1993, 1997; White & Rainbow, 1984). In many decapod species of crustaceans, it has been well established that essential metal concentrations remain steady over a large range of metal concentrations in their medium. This pattern has been described in numerous crustacean species not only for Zn but also for Cu (Amiard et al., 1987; Maranhão et al., 1999; Rainbow, 1993, 1998; Sandler, 1984). Some exceptions have been mentioned such as the absence of Cu regulation in the freshwater shrimp *Macrobrachium malcomsonii* (Vijayram & Geraldine, 1996) or of Zn regulation in crabs *Uca annulipes* and *U. triangulis* (Uma & Prabhakara, 1989). In other classes of crustaceans (amphipods, copepods...), Zn and Cu regulation processes are generally absent (Amiard et al., 1987; Barka et al., 2010; Chen & Liu, 1987; Clason et al., 2003; Rainbow, 1988; Rainbow & White, 1989; Zauke et al., 1996) even if the amphipods *Allorchestes compressa* and *Hyatella azteca* appear to be able to control their internal metal content (Ahsanullah & Williams, 1991; Borgmann et al., 1993).

Taxon	Class	Species (geographical zone)	Cu	Zn	Ni	Cd	Hg	Reference
Crustaceans	Copepod	<i>Tigriopus brevicornis</i> (North Atlantic coast)	9	66	9.3	0.17	0.34	(Barka <i>et al.</i> , 2010)
		<i>Calanus hyperboreus</i> (Greenland Sea)	4.7 5.6	80 104	11.4	4.0 0.75	0.31	Pohl (1992) Ritterhoff & Zauke (1997b)
		<i>Euchaeta barbata</i> (Greenland Sea)	4.5	225	3.9	0.16	0.27	Ritterhoff & Zauke (1997b)
		<i>Acartia clausi</i> (Méditerranean)	55	1270		0.6		Zarifopoulos & Grimaris (1977)
		<i>Metridia longa</i> (Greenland Sea)	7.5	351	19.7	0.71	0.68	Ritterhoff & Zauke (1997b)
	Isopod	<i>Ceratoserolis trilobitoides</i> (Gould Bay) (Elephant island)	38 46	40 40				De Nicola <i>et al.</i> , 1993
		<i>Idotea baltica</i> males (Bay of Naples, Italy)		292		0.68		
	Barnacle	<i>Capitulum mitella</i> (Cape d' Aguilar, Honk Kong)	29.2					Phillips & Rainbow, 1988
		<i>Amphibalanus amphitrite</i> Algeciras Bay (Spain)	94- 225	852- 4170	2.7-26			Morillo <i>et al.</i> , 2008
	Amphipod	<i>Platorchestia platensis</i> Hoi Ha Wan, Honk Kong Cape d' Aguilar, Honk Kong		199 193			fl	Rainbow <i>et al.</i> , 1989
		<i>Orchestia gammarellus</i> Whithorn, Scotland Girvan, Scotland	132 66					Rainbow <i>et al.</i> , 1989
	Branchiopod	<i>Daphnia magna</i> (Lab culture, from Huo Qi Ying Bridge, China)	230					Fan <i>et al.</i> , 2011
	Decapod	<i>Systemaspis debilis</i> (Deep Sea North East Atlantic)					12	Ridout <i>et al.</i> , 1989
Molluscs	Bivalve	<i>Mizuhopecten yessoensis</i> (Peter the Great Bay, Japan) Digestive gland Kidney				142 11.6		Lukyanova <i>et al.</i> , 1993
		<i>Mizuhopecten magellanicus</i> (US Atlantic coast) Digestive gland Kidney				94 62.6		Uthi & Chou, 1987

Table 1. Mean metal concentration in marine invertebrates collected from natural marine areas ( $\mu\text{g.g}^{-1}$  dry weight of total body or organ when indicated).

In fact, metal accumulation can be modelled at a given exposure by a straight line, the slope of each line representing the accumulation rate ( $\mu\text{g Metal g}^{-1} \text{d}^{-1}$ ) at that exposure. By plotting these rates against the exposure concentration, we can calculate the slope of this line which is the metal accumulation index ( $\mu\text{g g}^{-1} \text{d}^{-1}$  per  $\mu\text{g L}^{-1}$ , or  $\text{L g}^{-1} \text{d}^{-1}$ ) (according to Rainbow & White, 1989). From this index, it is possible to calculate the expected accumulated concentration at any exposure concentration at any exposure time. Sometimes, in the case of the lack of significant change in animal body metal concentration over controls, the calculation of accumulation index helps to decide whether a true metal regulation is occurring or not (when the index is very low).

When metal exposure concentration is high, regulation breakdowns and the excretion rate fails to match the uptake rate, resulting in a net increase in body metal. Therefore, metals may remain in metabolically available form, without detoxification, thus exerting a toxic effect after metabolic requirement is fulfilled. Another possible route for metal is to remain in detoxified form such as mineralized granules. In both cases, metal excretion may occur in a different form, metabolically available and detoxified, depending on the considered component.

Amphipods have a low zinc uptake rate with no significant excretion, resulting in a weak accumulation of this metal (Rainbow & White, 1989). Conversely, barnacles (*Elminius modestus*) (Rainbow, 1987; Rainbow & White, 1989) strongly accumulate zinc, in detoxified granules, with no excretion. Net accumulation strategies were reported for crustaceans from polar regions with respect to Pb and Cu in Arctic zooplankton *Calanus hyperboreus*, *Calanus finmarchicus*, *Metridia longa*, *Themisto abyssorum* (Ritterhoff & Zauke, 1997a,d) and to Co, Cu, Ni, Pb, and Zn in the Antarctic copepods *Calanoides acutus* (Kahle & Zauke, 2002a) and *Metridia gerlachei* (Kahle & Zauke, 2002b).

### 3. Localization of metals in marine invertebrates

Invertebrates possess several mineral bioaccumulation structures in various organs. Bioaccumulation structures were first revealed empirically or with imperfect histochemical techniques (Ballan-Dufrançais, 2002). In 1815, Brugnatelli observed "shalky structures" in malpighian tubules (involved in mineral homeostasis) of silk worms using microchemical techniques. Ever since, literature reported the existence of metal-containing granules in invertebrates, whether these were exposed or not to trace metals. Numerous studies have shown that metal-containing granules occur in many different aquatic phyla (from protozoa to arthropoda) (Ballan-Dufrançais, 1975; Barka, 2007; Mason & Jenkins, 1995; Moore, 1979; Nassiri et al., 2000; Simkiss & Mason, 1983; Nott, 1991; Viarengo & Nott, 1993; Vogt & Quinitio, 1994).

#### 3.1 Bioaccumulation structures in invertebrates: size, aspect, composition and role

Due to their chemical composition (Masala et al., 2002) and their different stages of development, metal granules are highly variable in form, composition, size, aspect and location (Brown, 1982; Mason & Jenkins, 1995; Roesijadi & Robinson, 1994). Sectioned granules show different types of internal structure. It may be homogeneous (Walker, 1977), diffuse (Mason et al., 1984), conglomerated (Isheii et al., 1986; Reid & Brand, 1989), crystalline (Masala et al., 2002) or arranged in concentric strata (Ballan-Dufrançais, 1975; Hopkin & Nott, 1979; Pugno et al., 2006). Their size is about less than a  $\mu\text{m}$  to several  $\mu\text{m}$ .

Depending on their elemental composition, cytochemical and chemical characteristics granules have been classified into three types (Brown, 1982 and references cited therein):

- i. Fe-containing granules in which Fe may be present in ferritin (Brown, 1982; Hopkin, 1989; Viarengo & Nott, 1993). They are generally amorphous but crystalline structures have already been observed in copepods, isopods, molluscs and amphipods (Barka, 2000; Jones et al., 1969; Quintana et al., 1987; Moore, 1979 respectively) (Fig. 1);

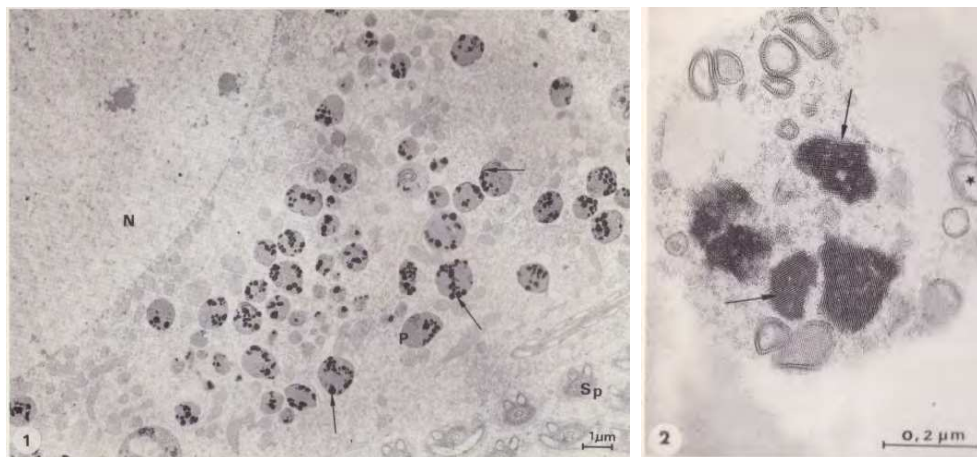


Fig. 1. (1) Ultrastructure of the ovotestis of *Planorbarius*, at the last stage of vitellogenesis. The platelets (P) of the oocyte contain electron-dense ferritin (arrows), N, nucleus, Sp, cross section of the sperm tails. Unstained osmicated ultrathin sections. X 7800. (2) Detail of a snail platelet. Natural occurrence of crystalline form of ferritin (arrows). Unstained non-osmicated section. X 50 000 (after Quintana et al., 1987).

- ii. Cu-containing granules also contain S and small amounts of Ca, K, P, Cl and Fe. Cu-rich granules have been observed in the digestive tract of many crustaceans living in pristine areas (Al-Mohanna & Nott, 1987; Barka, 2007; Hopkin & Nott, 1979; Nassiri et al., 2000; Walker, 1977). Vogt and Quintino (1994) found Cu-rich granules in hepatocytes of *Penaeus monodon*. Weeks (1992) and Nassiri et al. (2000) have also observed Cu-rich granules in the ventral caeca of the Amphipod *Orchestia gammarellus*. The same type of granule was found in the midgut of control and Cu-exposed marine isopods (Tupper et al., 2000) and in the digestive cells (sometimes in the apex) of copepods (Barka, 2007)(Fig.2a).

Ag was also found in Cu-S rich granules in control and Ag exposed crustaceans, (Barka 2007; Chou et al., 1998)(Fig.2b).. This may be explained by the fact that both metals, belonging to the group I.b of the transition elements, display many similar chemical properties as suggested by Hogstrand and Wood (1998) and Bury et al. (2003). Ag is probably naturally bioaccumulated which may indicate that these granules are not simply a sink for essential metals. Silver is often found in the aquatic environment in the 1-100 ng.l<sup>-1</sup> range and known to avidly bind to inorganic and organic ligand (Kramer et al., 2002). It is interesting to notice that larger Cu-containing granules were found in animals inhabiting Cu-contaminated environments (Barka, 2007; Brown, 1982). There is a great variability in the morphology

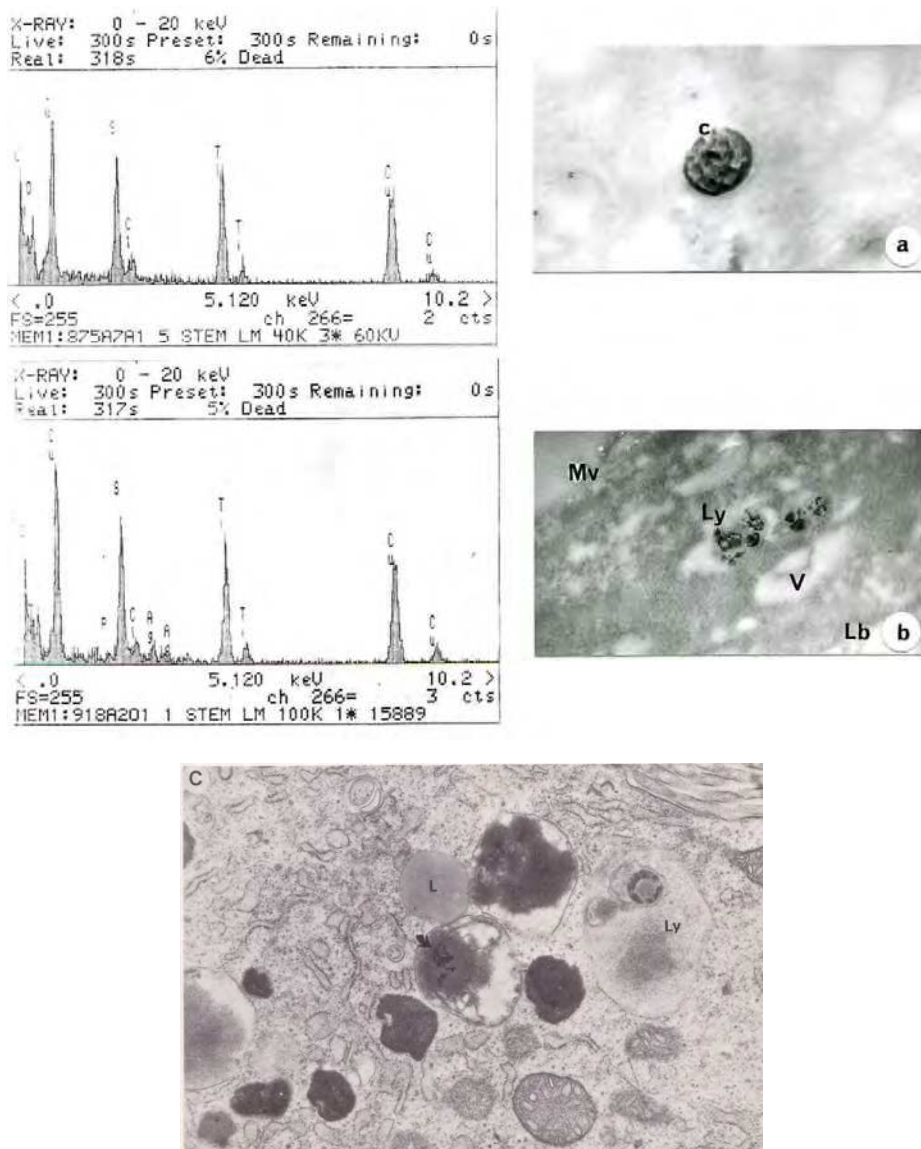


Fig. 2. (a,b) X-Ray microanalysis in the digestive epithelium of a copepod collected from an clean area. (a) Occurrence of Cu and S in a compact granule (c). x 29 000 (b) occurrence of Cu, P, S and Ag in the fine granular material of a lysosome (Ly), (Lb) basal lamina, (Mv) microvilli, (V) vacuole. x 19 000 (after Barka, 2007). (c) Bivalve (*Abra alba*) collected from Morlaix Bay, France. Ultrastructural aspect of a digestive cell, showing voluminous lysosomes (Ly) with vacuoles containing a flocculent material and electron dense particles (arrow). L, lipidic inclusion. Microanalysis revealed the presence of Si, Fe, Cu, P, Zn and S. X 26 000 (after Martoja et al, 1988).

of the different Cu-containing granules. However, they are all usually homogeneous, spherical structures with no concentric structuring;

iii. Ca-containing granules which may be of two types based on their composition:

- Ca carbonates granules, of a high purity are found in arthropod and gastropod conjunctive tissues as they are involved in Ca storage. They play no role in heavy metal physiology - although Pb may substitute to  $\text{Ca}^{2+}$  (George, 1982). They are generally big (several  $\mu\text{m}$ ) and have a typical aspect, with concentric strata. These particular structures, also called calcospherites or spherocrystals, have been found in the digestive cells of different terrestrial and aquatic arthropods (Ballan-Dufrançais, 2002; Barka, 2007; Corrêa et al., 2002; Defaye et al., 1985; Durfort, 1981) (Fig. 3);

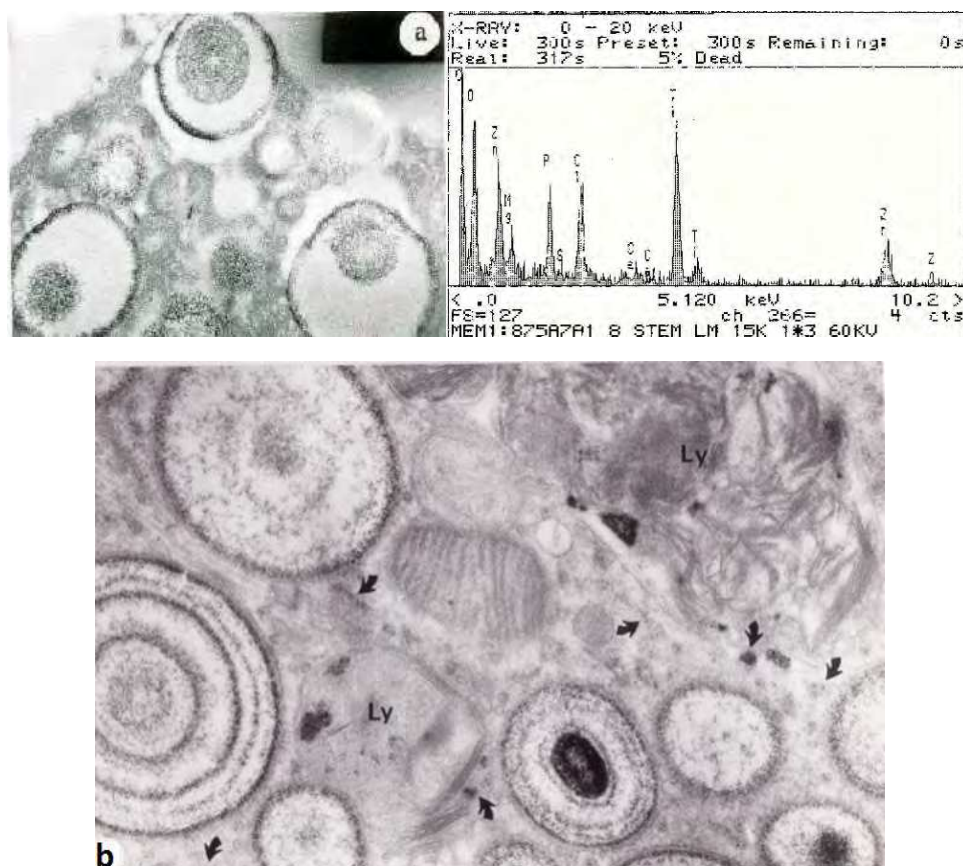


Fig. 3. (a) Occurrence of Zn, Mg, P, S and Ca in spherocrystals (2–2.5  $\mu\text{m}$ ) in digestive epithelium of a benthic copepod collected from the North Atlantic french coast. Note the dark and light concentric strata.  $\times 14,000$  (after Barka, 2007) (b) Cockroach (*Blattella*) exposed to  $\text{CH}_3\text{HgCl}$  through diet for 4 days. Ultrastructural aspect of ileum. Note the abundance of spherocrystals. Microgranules of Hg, Zn and Cu (arrows) are present in lysosomes (Ly) and in the endoplasmic reticulum.  $\times 40,000$  (after Jeantet, 1981).



- Ca phosphate granules in which Ca is present together with Mg, but also other metals such as Al, Ag, Ba, Co, Fe, Mn, Pb, Sn et Zn; and possibly Cu, Cd, Cr, Hg and Ni (Roesijadi & Robinson, 1994). They are intra and inter-specifically highly variable in aspect and composition which depend on environmental metal concentration (George, 1982; Sullivan et al., 1988) (Fig. 4). They are generally small (less than 1  $\mu\text{m}$ ) although huge ones (10-15  $\mu\text{m}$ ) have been found in marine bivalves (Marsh & Sass, 1985).

The precise role of these particular granules still remains unclear but the literature reported two major functions: regulation of storage and release of  $\text{Ca}^{2+}$  and detoxification (Corrêa et al., 2002; Simkiss & Wilbur, 1989; Simmons et al., 1996). These granules may act as a calcium reservoir serving as a source of calcium for metabolic needs, maintaining Ca homeostasis, exoskeleton replacement after moulting as suggested for crabs (Becker et al., 1974) or building material of skeletal tissue in molluscs (Jacob et al., 2011). However, several authors proposed a metal detoxification role for Ca granules (Mason & Simkiss, 1982; Simkiss, 1981). Furthermore, calcium granules, whose formation being controlled by factors associated with ion fluxes as evidenced by Masala et al. (2002), could act as a passive sink for toxic metals during calcium precipitation.

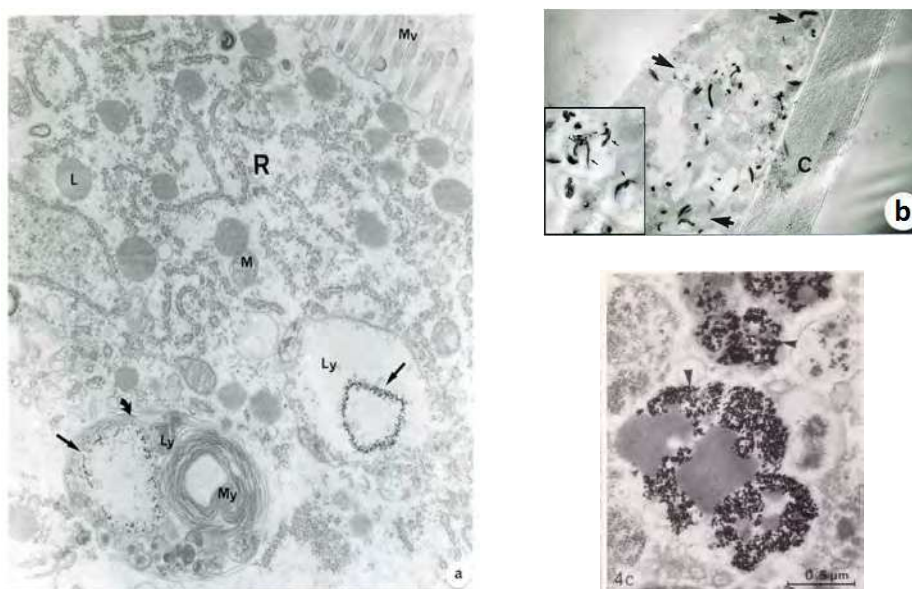


Fig. 4.(a) Ultrastructural aspect of a digestive epithelium cell of a benthic copepod exposed to Hg. Occurrence of dense granules (arrows) in lysosomes (Ly), L, lipids, Lu, lumen, M, mitochondria, Mv, microvilli, My, myelin.  $\times 15\ 000$ . (b) Occurrence of Cu, S and Ag in needles (arrows) in lysosomes of the integument of Ag exposed copepods.  $\times 19\ 000$  and  $\times 72\ 000$  for detail (after Barka, 2007) (c) Scallop (*Pecten maximus*) collected from the Channel coast. The lysosomes of the digestive gland contain dense granules (arrows) in which numerous elements are detected (Cd, Ag, Mo, Br, Zn, Cu, Fe, Ca, S, Si, Al).  $\times 48\ 600$  (after Ballan-Dufrançais et al., 1985).

### 3.2 Localization of metals in tissues and cells

Depending on the species, metal granules have been observed in different tissues. In gastropod mollusks, granules have been found in different tissues such as the digestive gland (Mason & Nott, 1981), gills (Marigomez et al., 1990; Mason et al., 1984; Simkiss & Mason, 1983), gonads (Quintana et al., 1987) and conjunctive tissue (Bouquegneau & Martoja, 1982; Martoja et al., 1980; Martoja et al., , 1985;). In crustaceans, these structures have been found in the digestive tract (Bernard & Lane, 1961; Guary & Négrel, 1981; Hopkin & Nott, 1979, 1980; Vogt & Quintio, 1994) and in the cuticular hypodermic parenchyme (Barka 2007; White, 1978 as cited in Mason & Jenkins, 1995). Actually, metal granules are present in almost every invertebrate tissues particularly in those involved in digestion and/or excretion (Mason & Jenkins, 1995).

At the cellular level, metal granules occur in the cytoplasm of cells and more specifically in the basal lamina, or cell apex and within specific organelles such as endoplasmic reticulum (ER) Golgi complex, Golgi vesicles and even in nucleus. Granules can also occur in the paracellular space or in the digestive lumen.

### 3.3 Origin and formation of metal mineralized structures

Metals entering cells may have different possible intracellular routes which have been summarized in Fig. 5.

X-Ray microanalysis associated with transmission electron microscopy showed that metal granules were found in vesicles originated from the lysosomal system. Granule elemental composition showed the presence of different minerals associated with C, S, O which have an organic origin. Cu-granules elemental composition showed the coexistence of Cu and S suggesting that sulphur may be the chelating agent. Heavy metals, especially class "b" metals, tend to form stable complexes with the sulphhydryl residues of amino acids and polypeptides. Metallothionein, with its high cysteine content, and other metal-binding proteins, are sulphur donors to which Cu can bind. Degraded proteins are finally engulfed into lysosomes where they are digested. This pathway has been extensively described in the literature and explains the presence of metals in lysosomes (Mason & Jenkins, 1995; Viarengo & Nott, 1993). As some metals can induce metallothioneins, it is reasonable to think that the presence of Cu (associated with S), Hg or Cd in lysosomes results from the breakdown products of metal-thionein that might be turning over at high rates in metal exposed animal. However, Cu-granules may also be a consequence of respiratory pigment catabolism as suggested by Moore & Rainbow (1992) in amphipods although, Cu in lysosomal granules may have entered the organelle through an ATPase transport system localized on the lysosomal membrane as found in lobster hepatopancreatic cells (Chavez-Crooker et al., 2003).

In Ca phosphate granules, lipofuscin may be the organic matrix for metal incorporation within lysosomes as it has been shown for Cd and Zn which passively adsorb onto lipofuscin (George, 1983b). Over time, some lysosomes fit together and/or evolve into voluminous heterolysosomes in which cytoplasmic material is progressively mineralized. Heterolysosomes then get smaller, more condensed and filled with indigestible products and finally they mature into residual bodies (also called tertiary lysosomes) in which enzyme activities are exhausted. The great variability of granules may be due to these different development stages.

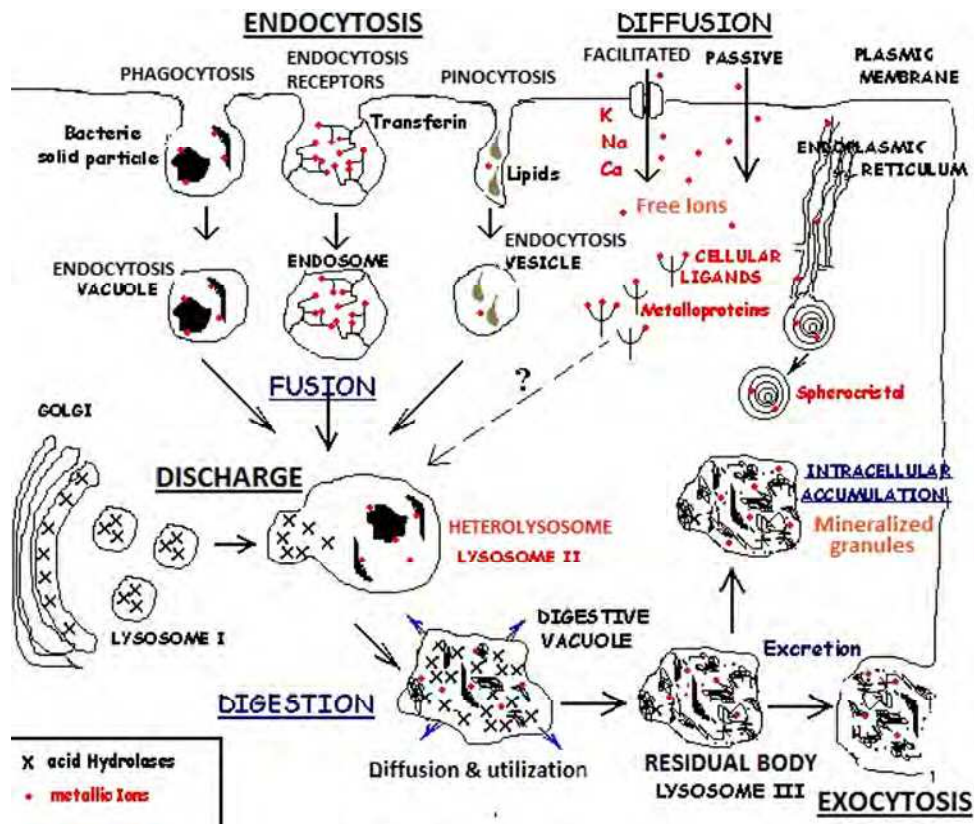


Fig. 5. Possible routes of metals in cells.

The structure of calcospherites granules is concentric and are thought to have a different origin. They may be derived from the endoplasmic reticulum (Ballan-Dufrancais, 2002; Cheung & Marshall, 1973; Correa et al., 2002). Studies based on cytochemical assays found a phosphatase activity associated to calcospherites, which strengthened the hypothesis that the reticulum is involved in the formation of these structures (Correa et al., 2002; Loret & Devos, 1995).

The mechanism of granule intra and extracellular growth was shown to be different from that leading to their initial formation. Metal accretion onto granules has been observed *in vivo* and *in vitro* (George, 1983a, b; Simkiss, 1981). Concentric strata have been interpreted as alternated period of accretion and resorption (Carmichael et al., 1979). In lysosomes, pH variations facilitate metal adsorption onto granule surfaces in sites where Ca dissociated during dissolution (Taylor et al., 1988) or following Mg<sup>2+</sup> loss (Nott & Nicolaidou, 1989b).

Overall, the precise elemental composition of granules using microanalytical techniques would greatly improve our understanding of the origin and the formation process of metal granules and, indirectly, metal handling mechanisms in invertebrates.

### **3.4 Technical considerations: ultrastructure and microanalysis**

#### **3.4.1 Technique principle**

Energy dispersive X-Ray Microanalysis in Transmission Electronic Microscopy (EDMA-TEM) consists of an analytical TEMs which is equipped with detectors for sample analysis. It works similarly to TEM: the sample is bombarded with an electron beam, emitting x-rays at wavelengths characteristic to the elements being analyzed. The elemental composition and abundance may be determined.

In the following section, technical considerations concerning Energy dispersive X-Ray Microanalysis connected with Transmission Electronic Microscopy are presented.

#### **3.4.2 Sample preparation before analysis**

The specimen-preparation technique influences the elemental data generated by granule microanalysis. Animal or tissue glutaraldehyde fixation was found to remove chemical elements such as Cd, as shown by the study of Nott and Langston (1989) who found Cd in granules in Cd-exposed molluscs when they used a cryo-preparation method instead of a chemical one. The original work of Vesk and Byrne (1999) on mussels, showed that chemical fixation and sectioning influenced elemental distribution and concentration of metals in granules. Furthermore, the conservation of tissues in a basic medium (sodium cacodylate) prior to dehydration do not favour the preservation of cytoplasmic bioaccumulation structures (Ballan-Dufrançais, 1975).

Resin embedding composition must be known. In general, resins contain chloride and an important Cl peak appears among those of other elements in microanalysis spectra.

As for grids, on which embedded specimens are deposited, they should be made of a metal that is not suspected to be found in biological tissues. Titanium grids rather than copper or gold grids are preferable.

Sample section thickness must be chosen to fit the best resolution. TEM samples should be thin enough to be beam transparent and resolve morphological detail using the transmitted electron signal. X-Ray spatial resolution depends on thickness sections because the energy beam, commonly between 100kV - 400kV in the analytical TEM, should not be destructive to samples. However, X-Ray generation is low for thin samples as the ionization volume is small but when analyzing thicker samples, absorption corrections (material density and thickness) should be made to minimize electron scattering.

#### **3.4.3 Advantages and inconvenient**

X-ray microanalysis of thin specimens in the Transmission Electron Microscope (TEM) offers nano-scale information on the chemistry of materials. X-Ray microanalysis is a non destructive, sensitive, accurate and precise technique. It is qualitative and semi-quantitative. However, quantitative results can be obtained from the relative x-ray counts at the characteristic energy levels for the sample constituents. The spectra obtained are easy to interpret.

The inconvenient, besides the fact that the instrument is expensive and requires technical skills, is that X-ray signals (peaks) for some elements may interfere with those for non-

biological elements (grid, resin...), which make the interpretation difficult. The sensitivity threshold of the technique can also be considered as a limiting factor. When metal concentration is too low, it remains undetectable. Furthermore, the thickness of the non-osmicated specimen section does not allow a proper visualization of the elements located, in the tissue or cell. Generally, when TEM is used, even if metal granules are visualized at the ultrastructural level, these structures do not necessarily match microanalysis data. This is due to the fact that X-Ray microanalysis and TEM observation require different preparation for each specimen (non-osmicated/thin section versus osmicated/ultrathin section)

#### **4. Ecotoxicological significance of metal bioaccumulation**

Crustaceans exoskeleton, molluscs shell etc are likely to come into contact with the surrounding metals and to bind to them before these are absorbed. When ingested (via food or water), metals entering the gut or passing through permeable membranes (e.g. gills), are absorbed in soft tissues where they are stored or excreted. Metals accumulated in soft tissues are likely to be present in two phases: dissolved in the cytoplasm, mainly as complexes with metal-binding proteins, or incorporated in metal-rich granules (Mason & Jenkins, 1995). All metals have the potential to be deleterious to cellular mechanisms, even though some of them are essential to normal metabolic processes. The metal accumulation levels, and consequently the potential toxicity, cannot be predicted only on the basis of concentration in water or in tissues (Simon et al., 2011). It is the only bioavailable fraction that is potentially toxic and of ecotoxicological relevance (Rainbow 1998, 2002, 2006). Therefore, toxicity cannot be attributed to the global body/organ metal burden but depends on the physico-chemical form in which the metal is present in organisms. From an ecotoxicological perspective/point of view, partitioning of metals (soluble versus insoluble) is important as metals, within these two fractions, are involved in different metal handling mechanisms and may have different mobility from prey to predator species through trophic transfer.

##### **4.1 Metal detoxification**

Lysosomal systems are ubiquitous in all invertebrate cells, particularly well developed in digestive and excretory cells. Furthermore, the occurrence of increasing lysosomes in metal exposed animals, compared to controls, leads to think that these organelles are involved in metal cellular responses. Two major metal storage pathways have been reported in invertebrates, namely, cytosolic metalloproteins and/or the lysosomal system (Amiard et al., 2006; Marigomez et al., 2002; Mason & Jenkins, 1995; Rainbow, 2006; Viarengo & Nott, 1993). The complexation of metals by metallothioneins (MTs), non-enzymatic metalloproteins, is one mechanism used by the invertebrate cell to prevent the activation of toxic metals in the cytoplasm (Viarengo et al., 1987). Consequently, in addition to their role in homeostasis, MTs have often been considered as detoxification proteins, although this latter function is still open to debate (Cosson et al., 1991).

The great ability of invertebrates to accumulate metals in granules probably enables these animals to cope with the presence of (potentially dangerous levels of) metals in their surroundings and to be protected from their toxicity (Brown, 1982; Desouky, 2006; Masala et al., 2004; Mason & Jenkins, 1995; Mason & Nott, 1981; Simkiss & Mason, 1983; Stegeman et al., 1992). In some species, these concretions remain in the cell for a relatively long period of time before they are excreted (Fowler, 1987; Sullivan et al., 1988; Nott, 1991). Actually

granules were found in the digestive lumen of the crab *Callinectes sapidus* (Becker et al., 1974; Guary & Negrel, 1981) and of the copepod *Tigriopus brevicornis* (Barka, 2007) suggesting that metal detoxification occurs (if the release of granules into the lumen is followed by an excretion in the gut)(Fig. 6). In fact, the dissolution of mineralized granules may occur along the digestive tract as showed in a terrestrial arthropod by Krueger et al. (1987). The decrease of the pH of lumen contents from distal to proximal regions of the digestive tract appears to be a major effector of granule dissolution. These authors also studied the effect of pH on the dissolution of isolated granules *in vitro*. They showed that the release of calcium, phosphorus, and magnesium from granules increased exponentially as the pH of the bathing medium was decreased. Loss of structural integrity of the granules accompanied mineral release and also increased as pH of the bathing medium was lowered *in vitro*. This study suggests that, during gut transit, metals can be released from granules for both prey and predators.

The significant increase in the number of granules upon exposure to metals and the fact that they are generally insoluble and associated with digestive or excretory tissues (i.e., digestive gland, hepatopancreas, kidney, among others) and, consequently, can be excreted, may give further evidence for their role in detoxification (Desouky, 2006; Marigomez et al., 2002; Pullen & Rainbow, 1991; Simkiss, 1976; Simkiss & Taylor, 1989).

#### 4.2 Biomagnification and trophic transfer

Many authors have suggested that the subcellular distribution of metals is critical for metal assimilation in predators (Amiard-Triquet et al., 1993; Nott & Nicolaidou, 1990; Reinfelder & Fisher, 1994; Wang & Rainbow, 2000). If we consider invertebrates as prey species, it is important to know how metals are distributed in animals because physicochemical characteristics of these contaminants (in prey species) control their mobility and thus their transfer to the next trophic level. Furthermore, accumulated metal in prey that is trophically available to one predator is not necessarily equally trophically available to another predator feeding on the same prey, given the variability between invertebrate digestive systems (Rainbow & Smith, 2010). The literature provides evidence that the assimilation of trace elements in predators is governed by the cytoplasmic distribution in prey (Ni et al., 2000; Nott & Nicolaidou, 1993; Reinfelder & Fisher, 1991, 1994; Wallace & Lopez, 1996, 1997; Wallace et al., 1998;).

Metals, mainly present in the fraction operationally described as the soluble fraction, are probably more able to be transferred along a food chain than those in insoluble fractions. Consequently, detoxification processes based on metallothioneins presumably would not protect the consumer since these proteins can be degraded, in predator gut, during digestion. Incorporation of metals into detoxified granules may lead to a "transfer of metal detoxification along marine food chains" since such inorganic compounds may not be assimilated during gut passage in the predators. The fact that metals can strongly bind to pre-existing granules, should guaranty a minimal remobilization. Consequently, metal incorporation, in detoxified form, within granules should reduce metal toxicity to the next trophic level although Khan et al., (2010) showed that cadmium bound to metal rich granules from an amphipod caused oxidative damage in the gut of its predator. These findings suggest that granules, largely considered as having limited bioavailability, may as also be toxic to some extent.

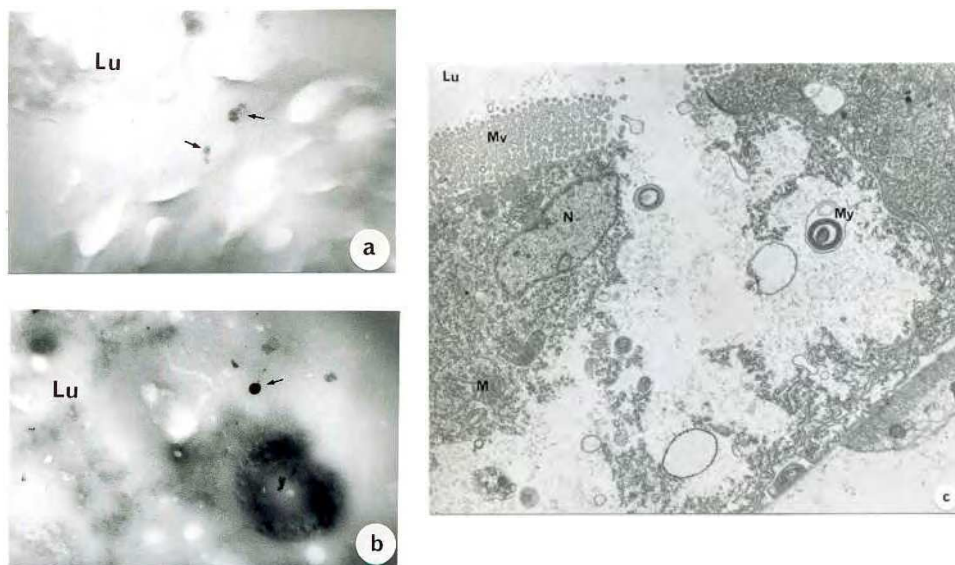


Fig. 6. Metal containing granules in the luminal tube (Lu) of a benthic copepod. (a) Occurrence of Cu, P, S and Ag in granules (arrows).  $\times 7\,200$ . (b) Occurrence of Fe, Cu, Zn, P, S and Ca in a granule (arrow).  $\times 29\,000$ . (c) Ultrastructure of a digestive cell extruding its contents into the lumen. Note the presence of a spherocrystal, a lysosome which membrane is electron-dense and another structure with myelin (My). M, mitochondria, Mv, microvilli, N, nucleus.  $\times 7\,000$  (after Barka, 2007).

Once in the gut, the reabsorption of the ions after the granule chemical and enzymatic dissolution may also occur, as suggested by Becker et al. (1974). Nott and Nicolaidou (1993), fed a carnivorous gastropod (*Nassarius reticulatus*) with another gastropod (*Littorina littorea*) hepatopancreas which contained intracellular phosphate granules. These granules passed through the predator gut. X-Ray microanalysis revealed that granules in the predator faecal pellets retained about 50% of the original zinc and 33% of the original manganese and showed that a metal bio-reduction occurred along the molluscan food chain suggesting, however, that part of the metals were bioavailable for the predator. X-ray microanalysis revealed also that, in phosphate granules, an increase in the quantity of metal is associated with a reduction in the magnesium/calcium ratio. Metals displace magnesium from the phosphate granule to the carbonate granule (Nott & Nicolaidou, 1989b; Schönborn et al., 2001).

The ability of granules to dissolve or not in the predator lumen may have a consequence not only on the trophic transfer of metals but also on the subsequent handling of toxic metals in predators.

## 5. Conclusion

Various examples of trace metal bioaccumulation structures, mostly among marine invertebrates, were illustrated and discussed in this chapter. They revealed the potential of

X-Ray analysis in understanding cellular mechanisms underneath metal bioaccumulation, granule composition, origin, growth and trophic transfer as well as metal detoxification adaptive strategies. For its accuracy and precision, X-Ray microanalysis is a powerful technique which allows to resolve several questions about metal handling. In fact, the way marine animals cope with the presence of metals in their surrounding is still open to investigation. Hence, and in order to enable the monitoring of metals in the environment, granule microanalysis may be proposed as a new approach (Dimitriadis & Papadaki, 2004).

## 6. Acknowledgments

This chapter has been written in memory of Christiane Ballan-Dufrançais, who left us too early, and to whom I am indebted. I would like to thank Anne-Yvonne Jeantet, Lydia Massot, Anny Anglo and Patricia Beaunier for their technical help and scientific advices.

## 7. References

- Ahsanullah, M., Williams, A.R. (1991). Sublethal effects and bioaccumulation of cadmium, chromium, copper and zinc in the marine amphipod *Allorchestes compressa*. *Marine Biology*, Vol. 108, No. 1, pp (59-65), ISSN 0025-3162
- Al-Mohanna, S.Y., Nott, J.A. (1987). R-Cells and the digestive cycle in *Penaeus semisulcatus* (Crustacea : Decapoda). *Marine Biology*, Vol. 95, pp (129-137), ISSN 0025-3162
- Amiard, J.C., Amiard-Triquet, C., Berthet, B., Metayer, C. (1987). Comparative study of the patterns of bioaccumulation of essential (Cu, Zn) and non-essential (Cd, Pb) trace metals in various estuarine and coastal organisms. *Journal of Experimental Marine Biology and Ecology*, Vol. 106, pp (73-89), ISSN 0022-0981
- Amiard, J.C., Amiard-Triquet, C., Barka, S., Pellerin, J., Rainbow, P.S. (2006). Metallothioneins in aquatic invertebrates: Their role in metal detoxification and their use as biomarkers. *Aquatic Toxicology*, Vol. 76, pp (160-202), ISSN 0166-445X
- Amiard-Triquet, C., Jeantet, A.Y., Berthet, B. (1993). Metal transfer in marine food chains: bioaccumulation and toxicity. *Acta Biologica Hungarica*, Vol. 44, No. 4, pp (387-409), ISSN 0236-5383
- Ballan-Dufrançais, C. (1975). Bioaccumulation minérale, purique et flavinique chez les insectes. Méthodes d'étude-Importance physiologique. *Thèse d'état*, université Pierre-et-Marie-Curie, 172p.
- Ballan-Dufrançais, C. (2002). Localization of metals in cells of Pterygote insects. *Microscopy Research and Techniques*, Vol. 56, pp (82-98), ISSN 1059-910X
- Ballan-Dufrançais, C.; Jeantet, A.Y., Halpern, S. (1982). Localisation intracellulaire par microanalyse X de métaux et métalloïdes dans la glande digestive d'un mollusque bivalve (*Pecten maximus*). Implication des processus de digestion. *Comptes-Rendus Hebdomadaires des Séances de l'Académie des Sciences de Paris*, Vol. 294, pp (673-678), ISSN 0567-655X
- Barka S. (2000) - Processus de détoxification et localisation tissulaire des métaux traces (cuivre, zinc, nickel, cadmium, argent et mercure) chez un Crustacé marin (Copépode harpacticoïde) *Tigriopus brevicornis*. Etude du biomarqueur « protéines type métallothionéines », de la bioaccumulation des métaux et des conséquences sur le transfert trophique. *Thèse de Doctorat (PhD) de l'Université Pierre et Marie Curie*, p. 204 + Boards



- Barka, S. (2007). Insoluble detoxification of trace metals (copper, zinc, nickel, cadmium, silver and mercury) in a marine crustacean *Tigriopus brevicornis* (Müller). *Ecotoxicology*, Vol. 16, pp (491–502), ISSN 0963-9292
- Barka, S., Pavillon J.-F., Amiard-Triquet, C. (2010). Metal distribution in *Tigriopus brevicornis* (Crustacea, Copepoda) of copper, zinc, nickel, cadmium, silver and mercury and assessment of subsequent transfer in the food web. *Environmental Toxicology*, Vol. 25, pp (350-360), ISSN 1520-4081
- Becker, G.L., Chen, C.H., Greenawalt, J.W., Lehninger, A.L. (1974). Calcium phosphate granules in the hepatopancreas of the blue crab *Callinectes sapidus*. *The Journal of Cell Biology*, Vol. 61, pp (316-326), ISSN 0021-9525
- Bernard, F.J., Lane, C.E. (1961). Absorption and excretion of copper ion during settlement and metamorphosis of the barnacle *Balanus amphitrite niveus*. *Biological Bulletin*, Vol. 121, pp (438-488), ISSN 0006-3185
- Borgmann, U., Norwood, W.P., Clarcke, C. (1993). Accumulation, regulation and toxicity of copper, zinc, lead and mercury in *Hyatella azteca*. *Hydrobiologia*, Vol. 259, pp (79-89), ISSN 0018-8158
- Börjesson, J., Mattsson, S. (2004). New applications. X-Ray fluorescence analysis in medical sciences. In: *X-Ray Spectrometry: Recent Technological Advances*, Tsuji, K., Injuk, J., Van Grieken, R., pp (487-515), John Wiley & Sons, Ltd, ISBN 0-471-48640-X, Chichester
- Bouquegneau, J.M., Martoja, M. (1982). Copper content and its degree of complexation in four marine gastropods. Data concerning cadmium and zinc. *Oceanologica Acta*, Vol. 5, No 2, pp (219-231), ISSN 0399-1784
- Brown, B.E. (1982). The form and function of metal-containing 'granules' in invertebrate tissues. *Biological Reviews*, Vol. 57, pp (621-667), ISSN 1464-7931
- Brunland, K.W. (1983). Trace elements in seawater. In: *Chemical Oceanography 8*, Riley, J.P., Chester, R., pp (157-220), Academic Press, ISBN 0-12-588608-X, London
- Bryan, G. W., Langston, W. J. (1992). Bioavailability, accumulation and effects of heavy metals in sediments with special reference to United Kingdom estuaries: a review. *Environmental Pollution*, Vol. 76, No. 2, pp (89-131), ISSN 0269-7491
- Bryan, G.W. (1979). Bioaccumulation of marine pollutants. *Philosophical Transactions of the Royal Society of London*, Vol. B286, pp (483-505), ISSN 0080-4622
- Bryan, G.W., Gibbs, P.E. (1980). Metals in nereid polychaetes: the contribution of metals in the jaws to the total body burden. *Journal of the Marine Biology Association of the United Kingdom*, Vol. 60, pp (641-654), ISSN 0025-3154
- Bury, N.R., Walker, P.A., Clover, C.N., (2003). Nutritive metal uptake in teleost fish. *Journal of Experimental Biology*, Vol. 206, pp (11–23), ISSN 0022-0949
- Bustamante, P. (1998). Bioaccumulation des éléments traces chez les mollusques céphalopodes et bivalves pectinidés. Implication de leur biodisponibilité pour le transfert vers les prédateurs. *Thèse de doctorat*, université de La Rochelle, 296p.
- Campbell, P.G.C., Tessier, A. (1996). Ecotoxicology of metals in the aquatic environment : Geochemical aspects. In: *Ecotoxicology: A hierarchical treatment*, Newman, M.C., Jagoe, C.H., Lewis Publishers, , pp (11-58), ISBN 1566701279, Boca Raton, Florida
- Carmichael, N.G., Squibb, K.S., Fowler, B.A. (1979). Metals in the molluscan kidney : a comparison of two closely related bivalve species (*Argopecten*), using X-ray

- microanalysis and atomic absorption spectroscopy. *Journal of the Fisheries Research Board of Canada*, Vol. 36, pp (1149-1155), ISSN 0015-296X
- Chavez-Crooker, P., Garrido, N. Pozo, P., Ahearn, G.A., (2003). Copper transport by lobster (*Homarus americanus*) hepatopancreatic lysosomes. *Comparative Biochemistry and Physiology*, Vol. C 135, pp (107-118), ISSN 1532-0456
- Chen J.C., Liu, P.C. (1987). Accumulation of heavy metals in the nauplii of *Artemia salina*. *Journal of the World Aquaculture Society*, Vol. 18, No. 2, pp (84-93), ISSN 1749-7345
- Cheung, V.W.K., Marshall, A.T. 1973. Studies on water and ion transport in homopteran insects: ultrastructure and cytochemistry of the cicadoid and cercopoid midgut. *Tissue and Cell*, Vol. 5, pp (651-669), ISSN 0040-8166
- Chou, C.L., Paon, L., Moffatt, J., Zwicker, B. (1998). Concentrations of metals in the American lobster (*Homarus americanus*) and sediments from harbours of the eastern and southern shores and the Annapolis Basin of Nova Scotia, Canada *Canadian Technical Report of Fisheries and Aquatic Sciences*, Vol. 2254, pp (78-89), ISSN 0706-6457
- Clason, B., Dusquene, M., Liess, M., Schulz, R., Zauke, G.P. (2003). Bioaccumulation of trace metals in the antarctic amphipod *Paramoera walkeri* (Stebbing, 1906): comparison of two-compartment and hyperbolic toxicokinetic models. *Aquatic Toxicology*, Vol. 65, pp (117-140), ISSN 0166-445X
- Corrêa J.D.Jr., Farina, M., Allodi, S. (2002). Cytoarchitectural features of *Ucides cordatus* (Crustacea Decapoda) hepatopancreas: structure and elemental composition of electron-dense granules *Tissue and Cell*, Vol 34, No. 5, (October 2002), pp (315-325), ISSN 0040-8166
- Cosson, R.P., Amiard-Triquet, C., Amiard, J.C. (1991). Metallothioneins and detoxification. Is the use of detoxification protein for MTs a language abuse?. *Water Air Soil Pollution*, Vol. 57-58, pp (555-567), ISSN 0049-6979
- De Nicola, M., Cardellicchio, N., Gambardella, C., Guarino, S.M., Marra, C. (1993). Effects of Cadmium on survival, bioaccumulation, histopathology and PGM polymorphism in the marine isopod *Idothea baltica*, In: *Ecotoxicology of metals in invertebrates*, Dallinger, R., Rainbow, P.S., pp (103-116), SETAC special publication, Lewis Publishers, ISBN 0-87371-734-I, Boca Raton, Florida
- Defaye, D., Suck J., Dussart, B. (1985). The alimentary canal of a freshwater Copepoda, *Macrocyclus albidus* and some other Cyclopoida. *Acta Zoologica*, Vol. 66, No. 2, pp (119-129), ISSN 1463-6395
- Depledge, M.H., Bjerregaard, P. (1989). Haemolymph protein composition and copper levels in decapods crustaceans. *Helgolander Wissenschaftliche Meeresuntersuchungen*, Vol. 43, pp (207-223), ISSN 0017-9957
- Desouky, M.A. (2006). Tissue distribution and subcellular localization of trace metals in the pond snail *Lymnaea stagnalis* with special reference to the role of lysosomal granules in metal sequestration *Aquatic Toxicology*, Vol. 77, No. 2, (May 2006), pp ( 143-152), ISSN 0166-445X
- Dimitriadis, V. K., Papadaki, M. (2004). Field application of autometallography and X-ray microanalysis using the digestive gland of the common mussel. *Ecotoxicology and Environmental Safety*, Vol. 59, No. 1, (September 2004), pp (31-37), ISSN 0147-6513

- Durfort, M. (1981). Mineral concretions in the intestinal epithelium of *Cyclops strenuus* Fish (Crustacea: Copepoda). Ultrastructural study. *Bulletin del Institut Catalan de Historia Natural*, Vol. 47, No. 4, pp (93-103), ISSN 1133-6889
- Fan, W., Cui, M., Liu, H., Wang, C., Shi, Z., Tan, C., Yang, X. (2011). Nano-TiO<sub>2</sub> enhances the toxicity of copper in natural water to *Daphnia magna*. *Environmental Pollution*, Vol.159, pp (729-734), ISSN 0269-7491
- Fowler, B.A. (1987). Intracellular compartmentation of metals in aquatic organisms: Relationships to mechanisms of cell injury. *Environmental Health Perspectives*, Vol. 71, pp (121-135), ISSN 0091-6765
- George, N.G. (1993). X-ray absorption spectroscopy of light elements in biological systems, *Current Opinion in Structural Biology*, Vol. 3, pp (780-784), ISSN 0959-440X
- George, S.G. (1982). Subcellular accumulation and detoxication of metals in aquatic organisms. In: *Physiological Mechanisms of Marine Pollutant Toxicity*, Vernberg, W.B. Calabrese, A., Thruberg, F.P., Vernberg, F.J., pp (3-52), Academic Press, ISBN 0-87371-734, New York
- George, S.G. (1983a). Heavy metal detoxication in the mussel *Mytilus edulis* - Composition of Cd-containing kidney granules (tertiary lysosomes). *Comparative Biochemistry and Physiology*, Vol. 76, No. 1C, pp (53-57), ISSN 1532-0456
- George, S.G. (1983b). Heavy metal detoxication in *Mytilus* kidney - an in vitro study of Cd and Zn-binding to isolated tertiary lysosomes. *Comparative Biochemistry and Physiology*, Vol. 76, No. 1C, pp (59-65), ISSN 1532-0456
- Gibbs, P.E., Bryan, G.W. (1980). Copper-The major inorganic component of glycerid polychaete jaws. *Journal of the Marine Biology Association of the United Kingdom*, Vol. 60, pp (205-214), ISSN 0025-3154
- Guary, J.C., Négrel, R. (1981). Calcium phosphate granules : A trap for transuranics and iron in crab hepatopancreas. *Comparative Biochemistry and Physiology*, Vol. 68A, pp (423-427), ISSN 1095-6433
- Hogstrand, C., Wood, C.M., (1998). Toward a better understanding of the bioavailability, physiology, and toxicity of silver in fish: implications for water quality criteria. *Environmental Toxicology and Chemistry*, Vol. 17, pp (547-561), ISSN 1552-8618
- Hopkin, S.P., Nott, J.A. (1979). Some observations on concentrically structured intracellular granules in the hepatopancreas of the shore crab *Carcinus maenas* (L.) with special reference to the B-Cells in the hepatopancreas. *Journal of the Marine Biological Association of the United Kingdom*, Vol. 60, pp (891-907), ISSN 0025-3154
- Hopkin, S.P., Nott, J.A. (1980). Studies on the digestive cycle of the shore crab *Carcinus maenas* (L.). *Journal of the Marine Biological Association of the United Kingdom*, Vol. 59, pp (867-877), ISSN 0025-3154
- Hopkin, S.P. (Ed.). (1989). *Ecophysiology of metals in terrestrial invertebrates*. Elsevier Applied Sciences, ISBN 1-85166-312-6, London
- Isheii, T., Ikuta, K., Hara, M., Ishikawa, M., Koyanagi, T. (1986). High accumulation of elements in the kidney of the marine bivalve *Cyclosunetta menstrualis*. *Bulletin of the Japanese Society of Scientific Fisheries*, Vol. 52, pp (147-154), ISSN 0021-5392
- Jacob, D.E., Wirth, R., Soldati, A.L., Wehrmeister, U., Schreiber, A. (2011). Amorphous calcium carbonate in the shells of adult *Unionoida*. *Journal of Structural Biology*, Vol. 173, No. 2, (February 2011), pp (241-249), ISSN 1047-8477

- Jeantet, A.Y., Ballan-Dufrançais, C., Anglo, A. (1997). Pollution par les métaux et atteintes cytologiques chez les bivalves marins. In: *Biomarqueurs en écotoxicologie. Aspects fondamentaux*, Lagadic, L., Caquet, T., Amiard, J.C., Ramade, F., pp (315-353), ISBN 2225830533, Masson, Paris,
- Jones, D.A., Babbage, P.C., King, P.E. (1969). Studies on the digestion and the fine structure of digestive caeca in *Eurydice pulchra* (Crustacea : Isopoda). *Marine Biology*, Vol. 2, pp (311-320), ISSN 0025-3162
- Kahle, J., Zauke G.P. (2002a). Bioaccumulation of trace metals in the copepod *Calanoides acutus* from the Weddell Sea (Antarctica): comparison of two-compartment and hyperbolic toxicokinetic models. *The Science of the Total Environment*, Vol. 295, pp (1-16), ISSN 0048-9697
- Kahle, J., Zauke, G.-P. (2002b). Bioaccumulation of trace metals in the copepod *Calanoides acutus* from the Weddell Sea (Antarctica): Comparison of two-compartment and hyperbolic toxicokinetic models. *Aquatic Toxicology*, Vol. 59, pp (115-135), ISSN 0166-445X
- Khan, F.R., Bury, N.R., Hogstrand, C. (2010). Cadmium bound to metal rich granules and exoskeleton from *Gammarus pulex* causes increased gut lipid peroxidation in zebrafish following single dietary exposure. *Aquatic Toxicology*, Vol. 96, No. 2, (31 January 2010), pp (124-129), ISSN 0166-445X
- Kramer, J.R., Benoit, G., Bowles, K.C., Di Toro, D.M., Herrin, R.T., Luther III, G.W., Manolopoulos, H., Robillard, K.A., Shafer, M.M., Shaw, J.R. (2002). . In: *Environmental chemistry of silver, Silver in the Environment: Transport, Fate and Effects*, Andren, A.W., Bober, T.W. (Eds.), pp (1-25), Setac Press, ISBN 0-936287-05-5, Pensacola, FL, USA
- Krueger, R.A., Broce, A.B., Hopkins, T.L. (1987). Dissolution of granules in the Malpighian tubules of *Musca autumnalis* DeGeer, during mineralization of the puparium. *Journal of Insect Physiology*, Vol. 33, No. 4, pp (255-263), ISSN 0022-1910
- Loret, S.M., Devos, P.E. (1995). Corrective note about R\*cells of the digestive gland of the shore crab *Carcinus maenas*. *Cell Tissue Research*, Vol. 290, pp (401-405), ISSN 0302-766X
- Lukyanova, O.N., Belcheva, N.N., Chelomin, V.P. (1993). Cadmium bioaccumulation in the scallop *Mizuhopecten yessoensis* from an unpolluted environment. In: *Ecotoxicology of metals in invertebrates*, Dallinger, R., Rainbow, P.S., pp (103-116), SETAC special publication, pp (26-35), Lewis Publishers, ISBN 0-87371-734-I, Boca Raton, Florida
- Maranhao, P., Marques, J.C., Madeira, V.M.C. (1999). Zinc and cadmium concentrations in soft tissues of the red swamp crayfish *Procambarus clarkii* (Girard 1852) after exposure to zinc and cadmium. *Environmental Toxicology and Chemistry*, Vol. 18, No. 8, pp (1769-1771), ISSN 1552-8618
- Marigomez, J.A., Cajaraville, M.P., Angulo, E. (1990). Cellular cadmium distribution in the common winkle *Littorina littorea* (L.) determined by X-ray microprobe analysis and histochemistry. *Histochemistry*, Vol. 94, pp (191-199), ISSN 0301-5564
- Marigomez, J.A., Soto, M., Carajaville, M.P., Angulo, E., Giamberini, L. (2002). Cellular and subcellular distribution of metals in molluscs, *Microscopy Research and Techniques*, Vol. 56, pp (358-392), ISSN 1059-910X

- Marsden, I.D., Rainbow, P.S. (2004). Does the accumulation of trace metals in crustaceans affect their ecology—the amphipod example? *Journal of Experimental Marine Biology and Ecology*, Vol.300, No. 1-2, pp (373-408), ISSN 0022-0981
- Marsh, M.E., Sass, R.L. (1985). Distribution and characterization of mineral-binding phosphoprotein particles in Bivalvia. *Journal of Experimental Zoology*, Vol. 234, pp (237-242), ISSN 0022-104X
- Martoja, M., Bouquegneau, J.M. , Truchet, M. , Martoja, B. (1985). Recherche de l'argent chez quelques mollusques marins, dulcicoles et terrestres. Formes chimiques et localisation histologiques. *Vie et Milieu*, Vol. 35, No. 1, pp (1-13), ISSN 0506-8924
- Martoja, M., Tue, V.T., Elkaïm, B. (1980). Bioaccumulation du cuivre chez *Littorina littorea* (L.) (Gastéropode, Prosobranchie). Signification physiologique et écologique. *Journal of Experimental Marine Biology and Ecology*, Vol. 43, pp (251-270), ISSN 0022-0981
- Martoja, M., Ballan-Dufrançais, C., Jeantet, A.Y., Truchet, M., Coulon, J. (1988). Influence de la composition chimique de l'environnement sur le bivalve *Abra alba*. Etude comparative d'animaux récoltés dans des milieux naturels et d'animaux contaminés expérimentalement par un effluent industriel. *Annales de l'Institut Océanographique*, Vol.64, No. 1, pp (1-24), ISSN 0078-9682
- Masala, O., McInnes, E.J.L., O'Brien, P. (2002). Modelling the formation of granules: the influence of manganese ions on calcium pyrophosphate precipitates. *Inorganica Chimica Acta*, Vol. 339, pp (366-372), ISSN 0020-1693
- Masala, O., O'Brien, P., Rainbow, P.S., (2004). Analysis of metal-containing granules in the barnacle *Tetraclita squamosa*. *Journal of Inorganic Biochemistry*, Vol. 98, pp (1095-1102), ISSN 0162-0134
- Mason, A.Z., Simkiss, K., Ryan, K. (1984). Ultrastructural localization of metals in specimens in *Littorina littorea* (L.) from polluted and non-polluted sites. *Journal of the Marine Biological Association of the United Kingdom*, Vol. 64, pp (699-720), ISSN 0025-3154
- Mason, A.Z., Nott, J.A. (1981). The role of intracellular biomineralized granules in the regulation and detoxification of metals in gastropods with special reference to the marine prosobranch *Littorina littorea*. *Aquatic Toxicology*, Vol. 1, pp (239-256), ISSN 0166-445X
- Mason, A.Z., Jenkins, K.D. (1995). Metal detoxification in aquatic organisms. In: *Metal speciation and bioavailability in aquatic systems*, Tessier A., Turner, D.R., John Wiley & Sons Ltd, pp (479-608), ISBN 0-471-95830-1, London,
- Mason, A.Z., Simkiss, K. (1982). Sites of mineral deposition in metal accumulating cells. *Experimental Cell Research*, Vol. 139, pp (383-391), ISSN 0014-4827
- Moore, P.G. (1979). Crystalline structure in the gut caeca of the amphipod *Stegocephaloides christianiensis* Boeck. *Journal of Experimental Marine Biology and Ecology*, Vol. 39, pp (223-229), ISSN 0022-0981
- Moore, P.G., Rainbow, P.S. (1992). Aspects of the biology of iron, copper and other metals in relation to feeding in *Andaniexis abyssi*, with notes on *Andaniopsis nordlandica* and *Stegocephalus inflatus* (Amphipoda: Stegocephalidae), from Norwegian waters. *Sarsia*, Vol. 76, No. 4, pp (215-225), ISSN 0036-4827
- Morillo, J., Usero, J., Bakouri, H.E. (2008). Biomonitoring of heavy metals in the coastal waters of two industrialised bays in southern Spain using the barnacle *Balanus amphitrite*. *Chemical Speciation and Bioavailability*, Vol.20, No. 4, pp (227-237), ISSN 0954-2299

- Nassiri, Y., Rainbow, P.S., Amiard-triquet, C., Rainglet, F., Smith, B.D. (2000). Trace metal detoxification in the ventral caeca of *Orchestia gammarellus* (Crustacea: Amphipoda). *Marine Biology*, Vol. 136, pp (477-484), ISSN 0025-3162
- Ni, I.H., Wang, W.X., Tam, Y.K. (2000). Transfer of Cd, Cr and Zn from zooplankton prey to mudskipper *Periophthalmus cantonensis* and glassy *Ambassis urotaenia* fishes. *Marine Ecology Progress Series*, Vol. 194, pp (203-210), ISSN 0171-8630
- Nott, J.A. (1991). Cytology of pollutant metals in marine invertebrates: A review of microanalytical applications. *Scanning Microscopy*, Vol. 5, pp (191-230), ISSN 0891-7035
- Nott, J.A., Nicolaidou, A. (1989a). The cytology of heavy metal accumulation in the digestive glands of three marine gastropods. *Proceedings of the Royal Society of London*, Vol. 234B, pp (463-470), ISSN 0962-8452
- Nott, J.A., Nicolaidou, A. (1989b). Metals in gastropods – metabolism and bioreduction. *Marine Environmental Research*, Vol. 28, No. 1-4, pp (201-205), ISSN 0141-1136
- Nott, J.A., Nicolaidou, A. (1990). Transfer of metal detoxification along marine food chains. *Journal of Marine Biological Association of the United Kingdom*, Vol. 70, pp (905-912), ISSN 0025-315
- Nott, J.A., Nicolaidou, A. (1993). Bioreduction of zinc and manganese along a molluscan food chain. *Comparative Biochemistry and Physiology Part A: Physiology*, Vol. 104, No. 2, (February 1993), pp (235-238), ISSN 1095-6433
- Pequegnat, J.E., Fowler, S.W., Small, L.F. (1969). Estimates of the zinc requirements of marine organisms. *Journal of the Fisheries Research Board of Canada*, Vol.26, pp (145-150), ISSN 0015-296X
- Phillips, D.J.H., Rainbow, P.S. (1988). Barnacles and mussels as biomonitors of trace elements: a comparative study, *Marine Ecology Progress Series*, Vol.49, pp (83-93), ISSN 0171-8630
- Pigino, G., Migliorini, M., Paccagnini, E. Bernini F. (2006). Localisation of heavy metals in the midgut epithelial cells of *Xenillus tegeocranus* (Hermann, 1804) (Acari: Oribatida). *Ecotoxicology and Environmental Safety*, Vol. 64, No. 3, (July 2006), pp (257-263), ISSN 0147-6513
- Pohl, C. (1992). Wechselbeziehungen zwischen Spurenmetalkonzentrationen (Cd, Cu, Pb, Zn) im meerwasser und in zooplanktonorganismen (Copepoda) der Arktis und des Atlantiks. *Berichte zur Polarforschung*, Vol. 101, pp (1-198), ISSN 0176-5027
- Pullen, J.S.H., Rainbow, P.S. (1991). The composition of pyrophosphate heavy metal detoxification granules in barnacles. *Journal of Experimental Marine Biology and Ecology*, Vol. 150, No. 2, pp (249-266), ISSN 0022-0981
- Quintana, C., Bonnet, N., Jeantet, AY., Chemelle, P. (1987). Crystallographic study of the ferritin molecules : new results obtained from the natural crystals *in situ* (mollusk oocyte) and from isolated molecules (horse spleen). *Biology of the Cell*, Vol.59, pp (247-254), ISSN 0248-4900
- Raimundo, J., Vale, C., Duarte, R., Moura, I. (2008). Sub-cellular partitioning of Zn, Cu, Cd and Pb in the digestive gland of native *Octopus vulgaris* exposed to different metal concentrations (Portugal). *The Science of The Total Environment*, Vol. 390, No. 2-3, (15 February 2008), pp (410-416), ISSN 0048-9697
- Rainbow, P.S. (2007). Trace metal bioaccumulation: Models, metabolic availability and toxicity. *Environment International*, Vol.33, No. 4, pp (576-582), ISSN 0160-4120

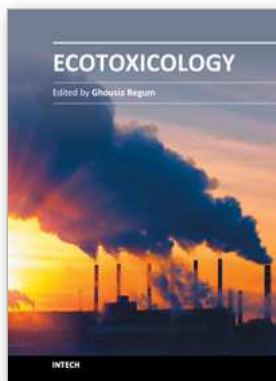
- Rainbow, P.S., Smith, B.D. (2010). Trophic transfer of trace metals: Subcellular compartmentalization in bivalve prey and comparative assimilation efficiencies of two invertebrate predators *Journal of Experimental Marine Biology and Ecology*, Vol. 390, No. 2, pp (143-148), 0022-0981
- Rainbow, P.S. (1987). Heavy metals in barnacles. In: *Crustacean Issues 5-Barnacle Biology*, Southward, A.J. (Ed.), pp (405-407), ISBN 90-6191-628-3, Rotterdam
- Rainbow, P.S. (1988). The significance of trace metal concentration in decapods, *Proceeding of the Symposium of the Zoological Society of London*, London, april 1988
- Rainbow, P.S. (1993). The significance of trace metal concentration in marine invertebrates. In: *Ecotoxicology of metals in invertebrates*, Dallinger, R., Rainbow, P.S. (Eds.), pp (3-23), SETAC special publication, Lewis Publishers, ISBN 0-87371-734-I, Boca Raton, Florida
- Rainbow, P.S. (1997). Trace metal accumulation in marine invertebrates : Marine biology or marine chemistry? *Journal of Marine Biology Association of the United Kingdom*, Vol. 77, pp (195-210), ISSN 0025-3154
- Rainbow, P.S. (1998). Phylogeny of trace metal accumulation in crustaceans. In: *Metal Metabolism in Aquatic Environments*, Langston, W.J., Bebianno, M., pp (285-319), Chapman and Hall, ISBN 0412803704, London
- Rainbow, P.S., Phillips, D.J.H., Depledge, M.H. (1990). The significance of trace metal concentrations in marine invertebrates, a need for laboratory investigation of accumulation strategies. *Marine Pollution Bulletin*, Vol. 21, pp (321-324), ISSN 0025-326X
- Rainbow, P.S., White, S.L. (1989). Comparative strategies of heavy metal accumulation by crustaceans : zinc, copper and cadmium in decapod, an amphipod and a barnacle. *Hydrobiologia*, Vol. 74, pp (243-262), ISSN 0018-8158
- Rainbow, P.S. (2002). Trace metal concentrations in aquatic invertebrates: why and so what?. *Environmental Pollution*, Vol. 120, pp (497-507), ISSN 0269-7491
- Rainbow, P.S., (2006). Trace metal bioaccumulation: model, metabolic availability and toxicity. *Environment International*, Vol. 30, pp (67-78), ISSN 0160-4120
- Rainbow, P.S., Moore, P.G., Watson, D. (1989). Talitrid amphipods as biomonitors for copper and zinc, *Estuarine Coastal Shelf Science*, Vol.28, pp (567-582), ISSN 0272-7714
- Rainbow, P.S., Kriefman, S., Smith, B.D., Luoma, S.N. (2011) Have the bioavailabilities of trace metals to a suite of biomonitors changed over three decades in SW England estuaries historically affected by mining? *The Science of The Total Environment*, Vol. 409, No. 8, pp (1589-1602), ISSN 0048-9697
- Ramade, F. (Ed.) (1992). *Précis d'écotoxicologie*, Masson, ISBN 2-225-82578-5, Paris
- Reid, R.G.B., Brand, D.G. (1989). Giant kidneys and metal-sequestering nephroliths in the bivalve *Pinna bicolor*, with comparative notes on *Altrina vexillum* (Pinnidae). *Journal of Experimental Marine Biology and Ecology*, Vol. 126, pp (95-117), ISSN 0022-0981
- Reinfelder, J.R., Fisher, N.S. (1991). The assimilation of elements ingested by marine copepods. *Science*, Vol. 251, pp (794-796), ISSN 0036-8075
- Reinfelder, J.R., Fisher, N.S. (1994). Retention of elements absorbed by juvenile fish (*Menidia menidia*, *Menidia beryllina*) from zooplankton prey. *Limnology and Oceanography*, Vol. 39, pp (1783-1789), ISSN 0024-3590

- Ridout, P.S., Rainbow, P.S., Roe, H.S., Jones, H.R. (1989). Concentrations of V, Cr, Mn, Fe, Ni, Co, Cu, Zn, As, Cd in mesopelagic crustaceans from north east Atlantic Ocean, *Marine Biology*, Vol.100, pp (465-), ISSN 0025-3162
- Ritterhoff, J., Zauke, G.P. (1997a). Bioaccumulation of trace metals in Greeland Sea copepod and amphipod collectives on board ship : verification of toxicokinetic model parameters. *Aquatic Toxicology*, Vol. 40, pp (63-78), ISSN 0166-445X
- Ritterhoff, J., Zauke, G.P. (1997b). Trace metals in field samples of zooplankton from the Fram Strait and the Greenland Sea. *The Science of The Total Environment*, Vol. 199, pp (255-270), ISSN 0048-9697
- Roesijadi, G., Robinson, W.E. (1994). Metal regulation in aquatic animals: Mechanisms of uptake, accumulation and release. In: *Aquatic toxicology: molecular, biochemical and cellular perspectives*, Martins, D.C., Ostrander, G.K., pp (387-420), Lewis Publishers, ISBN 0-87371-545-4, Boca Raton,.
- Rokosz, M.J., Vinogradov, S.N. (1982). X-ray fluorescence spectrometric determination of the metal content of the extracellular hemoglobin of *Tubifex tubifex*. *Biochimica et Biophysica Acta (BBA) - Protein Structure and Molecular Enzymology*, Vol. 707, No. 2, (5 October 1982), pp (291-293), ISSN 0167-4838
- Sandler, A. (1984). Zinc and copper concentrations in benthic invertebrates considered in relation to concentrations in sediments and water in the Bothnian sea (Northern Baltic). *Finnish Marine Research*, Vol. 250, pp (19-32), ISSN 0357-1076
- Schofield, R.M.S., Niedbala, J.C. Nesson, M.H., Tao, Y., Shokes, J.E., Scott, R.A., Latimer, M.J. (2009). Br-rich tips of calcified crab claws are less hard but more fracture resistant: A comparison of mineralized and heavy-element biological materials. *Journal of Structural Biology*, Vol. 166, No. 3, (June 2009), pp (272-287), ISSN 1047-8477
- Schönborn, C., Bauer, H.D., Röske, I. (2001) Stability of enhanced biological phosphorus removal and composition of polyphosphate granules. *Water Research*, Vol.35, No. 13, pp (3190-3196), ISSN 0043-1354
- Simkiss, K. (1976). Intracellular and extracellular routes of biomineralization. In: *Calcium in biological systems*, Symposia of the Society for experimental Biology 30, p (423-444), University Press, ISBN 0521212367, Cambridge
- Simkiss, K. (1981). Cellular discrimination processes in metal accumulating cells. *Journal of Experimental Biology*, Vol. 94, pp (317-), ISSN 0022-0949
- Simkiss, K., Mason, A.Z. (1983). Metal ions: Metabolic and toxic effects. In: *The Mollusca Vol.2*, Wilbur, K.M., pp (101), Academic Press, New York
- Simkiss, K., Taylor, M.G. (1989). Metal fluxes across the membranes of aquatic organisms. *CRC Critical Reviews in Aquatic Sciences*, Vol. 1, pp (173-), ISSN 0891-4117
- Simkiss, K., Taylor, M.G. (1995). Transport of metals across membranes. In: *Metal speciation and bioavailability in aquatic systems*, Tessier A., Turner, D.R., John Wiley & Sons Ltd, pp (1-44), ISBN 0-471-95830-1, London
- Simkiss, K., Wilbur, K.M., (1989). Crustacea – The dynamics of epithelial movements. In: *Biomineralization: Cell Biology and Mineral Deposition*, Simkiss, K., Wilbur, K.M., pp. (205-229), Academic Press, ISBN 978-0-12-643830-7 , San Diego
- Simmons, J., Simkiss, K., Taylor, M.G., Jarvis, K.E., (1996). Crab biominerals as environmental monitors. *Bulletin of Institute of Ocean*, Vol. 14, pp (225-231)
- Simon, O., Floriani, M., Cavalie, I., Camilleri, V., Adam, C., Gilbin, R., Garnier-Laplace, J. (2011). Internal distribution of uranium and associated genotoxic damages in the



- chronically exposed bivalve *Corbicula fluminea*. *Journal of Environmental Radioactivity*, Vol. 102, No. 8, (August 2011), pp (766-773), ISSN 0265-931X
- Stegeman, J.J., Brouwer, M., Di Giulio, R.T., Förlin, L., Fowler, B.A., Sanders, B.M., Van Veld, P.A. (1992). Molecular responses to environmental contamination: Enzyme and protein systems as indicators of chemical exposure and effect. In: *Biomarkers, Biochemical, Physiological and Histological Markers of Anthropogenic Stress*, Huggett, R.J., Kimerle, R.A., Mehrle, P.M. Jr, Bergman, H.L. pp (235-355),. Lewis Publishers, ISBN 087371-505-5, Boca Raton Florida
- Sullivan, P.A., Robinson, W.E., Morse, M.P. (1988). Isolation and characterization of granules from the kidney of the bivalve *Mercenaria mercenaria*. *Marine biology*, Vol. 99, pp(359-367), ISSN 0025-3162
- Taylor, M.G., Simkiss, K., Greaves, G.N., Haries, J. (1988). Corrosion of intracellular granules and cell death. *Proceedings of the Royal Society of London*, Vol. 234B, pp(463-476), ISSN 0962-8452
- Tupper, C., Pitman, A., Cragg, S. (2000). Copper accumulation in the digestive caecae of *Limnoria quadripunctata* Holthius (Isopoda: Crustacea) tunnelling CCA-treated wood in laboratory cultures. *Holzforchung*, Vol. 54, No. 6, pp (570-576), ISSN 0018-3830
- Uma, D.V., Prabhakara, R.Y. (1989). Zinc accumulation in fiddler crabs, *Uca annulipes* Latreille and *Uca triangulis* (Milne Edwards). *Ecotoxicology and Environmental Safety*, Vol. 18, pp (129-140), ISSN 0147-6513
- Uthi, J.F., Chou, C.L. (1987). Cadmium in sea scallop (*Placopecten magellanicus*) tissues from clean and contaminated areas. *Canadian Journal of Fisheries and Aquatic Sciences*, Vol.44, pp (91-98), ISSN 0706-652
- Van Cappellen, E. (2004) Energie Dispersive X-Ray Microanalysis in Scanning and conventional transmission electronic microscopy. In: *X-Ray Spectrometry: Recent Technological Advances*, Tsuji, K., Injuk, J., Van Grieken, R., pp (387-391), John Wiley & Sons, Ltd, ISBN 0-471-48640-X, Chichester
- Vesk, P.A., Byrne, M. (1999). Metal levels in tissue granules of the freshwater bivalve *Hyridella depressa* (Unionida) for biomonitoring: the importance of cryopreparation. *The Science of The Total Environment*, Vol. 225, No. 3, (January 1999), pp (219-229), ISSN 0048-9697
- Viarengo, A., Moore, M.N., Mancinelli, P.M., Zanicchi, G., Pipe, R.K. (1987). Detoxification of copper in the cells of the digestive gland of mussels: the role of lysosomes and thioneins. *The Science of the Total Environment*, Vol. 44, pp(135-145), ISSN 0048-9697
- Viarengo, A., Nott, J.A. (1993). Mechanisms of heavy metal cation homeostasis in marine invertebrates. *Comparative Biochemistry and Physiology*, Vol. 104C, pp (355-372), ISSN 1532-0456
- Vijayram, K., Geraldine, P. (1996). Regulation of essential heavy metals (Cu, Cr, and Zn) by the freshwater prawn *Macrobrachium malcolmsonii* (Milne Edwards). *Bulletin of Environmental Contamination and Toxicology*, Vol. 56, No. 2, pp (335-342), ISSN 0007-4861
- Vogt, G., Quintio, E.T. (1994). Accumulation and excretion of metal granules in the prawn *Penaeus monodon*, exposed to water-borne copper, lead, iron and calcium. *Aquatic Toxicology*, Vol. 28, pp (223-241), ISSN 0166-445X

- Walker, G. (1977). "Copper" granules in the barnacle *Balanus balanoides*. *Marine Biology*, vol. 39, pp (343-349), ISSN 0025-3162
- Wallace, W.G., Lopez, G.R. (1997). Bioavailability of biologically sequesters cadmium and the implications of metal detoxification. *Marine Ecology Progress Series*, Vol. 147, pp (149-157), ISSN 0171-8630
- Wallace, W.G., Lopez, G.R., Levinton, J.S. (1998). Cadmium resistance in an oligochaete and its effects on cadmium trophic transfer to an omnivorous shrimp. *Marine Ecology Progress Series*, Vol. 172, pp (225-237), ISSN 0171-8630
- Wang, W.X., Rainbow, P.S. (2008) Comparative approaches to understand metal bioaccumulation in aquatic animals *Comparative Biochemistry and Physiology Part C: Toxicology & Pharmacology*, Vol. 148, No. 4, pp (315-323), ISSN 1532-0456
- Wang, W.X., Rainbow, P.S. (2000). Dietary uptake of Cd, Cr and Zn in the barnacle *Balanus trigonus*: influence of diet composition. *Marine Ecology Progress Series*, Vol. 204, pp (159-168), ISSN 0171-8630
- Weeks, J.M. (1992). Copper-rich granules in the ventral caeca of talitrid amphipods (Crustacea; Amphipoda: Talitridae). *Ophelia*, Vol. 36, No. 2, pp (119-133), ISSN 0078-5326
- White, S.L., Rainbow, P.S. (1984). Regulation of zinc concentration of *Palaemon elegans* (Crustacea: Decapoda): Zinc flux and effects of temperature, zinc concentration and moulting. *Marine Ecology Progress Series*, Vol. 16, pp (135-147), ISSN 0171-8630
- White, S.L., Rainbow, P.S. (1985). On the metabolic requirements for copper and zinc in molluscs and crustaceans. *Marine Environmental Research*, Vol. 16, pp (215-229), ISSN 0141-1136
- Zauke, G.P., Krause, M., Weber, A. (1996). Trace metals in mesozooplankton of the north sea : concentrations in different taxa and preliminary results on bioaccumulation in copepod collectives (*Calanus finmarchicus*/*C. helgolandicus*). *International Revue der Gesamten und Hydrographie. Systematische beihefte*, Vol. 81, pp (141-160), ISSN 0535-4137
- Zafiroopoulos, D., Grimanis, A.P. (1977). Trace elements in *Acartia clausi* from Elefis Bay of the upper Saronikos Gulf, Greece. *Marine Pollution Bulletin*, Vol. 8, pp (79-81), ISSN 0025-326X
- Zauke, G.P., Petri, G. (1993). Metal concentration in Antarctic Crustacea: the problem of background levels. In: *Ecotoxicology of metals in invertebrates*, Dallinger, R., Rainbow, P.S., pp (73-101), SETAC special publication, Lewis Publishers, ISBN 0-87371-734-I, Boca Raton, Florida



## **Ecotoxicology**

Edited by Dr. Ghousia Begum

ISBN 978-953-51-0027-0

Hard cover, 146 pages

**Publisher** InTech

**Published online** 03, February, 2012

**Published in print edition** February, 2012

This is a good book on upcoming areas of Ecotoxicology. The first chapter describes genotoxicity of heavy metals in plants. The second chapter offer views on chromatographic methodologies for the estimation of mycotoxin. Chapter three is on effects of xenobiotics on benthic assemblages in different habitats of Australia. Laboratory findings of genotoxins on small mammals are presented in chapter four. The fifth chapter describes bioindicators of soil quality and assessment of pesticides used in chemical seed treatments. European regulation REACH in marine ecotoxicology is described in chapter six. X-ray spectroscopic analysis for trace metal in invertebrates is presented in chapter seven. The last chapter is on alternative animal model for toxicity testing. In conclusion, this book is an excellent and well organized collection of up dated information on Ecotoxicology. The data presented in it might be a good starting point to develop research in the field of ECOTOXICOLOGY.

### **How to reference**

In order to correctly reference this scholarly work, feel free to copy and paste the following:

Sabria Barka (2012). Contribution of X-Ray Spectroscopy to Marine Ecotoxicology: Trace Metal Bioaccumulation and Detoxification in Marine Invertebrates, Ecotoxicology, Dr. Ghousia Begum (Ed.), ISBN: 978-953-51-0027-0, InTech, Available from: <http://www.intechopen.com/books/ecotoxicology/contribution-of-x-ray-spectroscopy-to-marine-ecotoxicology-trace-metal-bioaccumulation-and-detoxific>

# **INTECH**

open science | open minds

### **InTech Europe**

University Campus STeP Ri  
Slavka Krautzeka 83/A  
51000 Rijeka, Croatia  
Phone: +385 (51) 770 447  
Fax: +385 (51) 686 166  
[www.intechopen.com](http://www.intechopen.com)

### **InTech China**

Unit 405, Office Block, Hotel Equatorial Shanghai  
No.65, Yan An Road (West), Shanghai, 200040, China  
中国上海市延安西路65号上海国际贵都大饭店办公楼405单元  
Phone: +86-21-62489820  
Fax: +86-21-62489821

© 2012 The Author(s). Licensee IntechOpen. This is an open access article distributed under the terms of the [Creative Commons Attribution 3.0 License](#), which permits unrestricted use, distribution, and reproduction in any medium, provided the original work is properly cited.