

# Role of Mitochondrial Dysfunction in Motor Neuron Degeneration in ALS

Luz Diana Santa-Cruz, Uri Nimrod Ramírez-Jarquín and Ricardo Tapia  
*División de Neurociencias, Instituto de Fisiología Celular,  
Universidad Nacional Autónoma de México, México, D.F.,  
México*

## 1. Introduction

Amyotrophic lateral sclerosis (ALS), which was described since 1869 by Jean Martin Charcot, is a devastating neurodegenerative disease characterized by the selective and progressive loss of upper and lower motor neurons of the cerebral cortex, brainstem and the spinal cord. Progressive motor neuron loss causes muscle weakness, spasticity and fasciculation, eventually paralysis and finally death by respiratory failure 3 to 5 years after diagnosis. ALS worldwide prevalence is about 2 to 8 people per 100,000, and presents two important differences with respect to other neurodegenerative diseases: the cognitive process is not affected and is not merely the result of aging because may occur at young ages (Chancellor & Warlow, 1992; Huisman et al., 2011). Two forms of ALS are known, the familial type (FALS), associated with genetic mutations, mainly in the gene encoding superoxide dismutase 1 (SOD1, enzyme responsible for superoxide dismutation to oxygen and hydrogen peroxide), and the sporadic form (SALS), of unknown origin. FALS represents only about 5-10% of cases (Rosen et al., 1993; Rowland & Shneider, 2001), and SALS comprises the remaining 90%. Despite having different origins, both ALS types develop similar histopathological and clinical characteristics.

## 2. Mechanisms of motor neuron death in ALS

After one hundred fifty years since the first ALS description of the disease, the cause of motor neuron degeneration remains unknown, but progress in neuroscience and clinical research has identified several mechanisms that seem to be involved in the cell death process, such as glutamate-mediated excitotoxicity, inflammatory events, axonal transport deficits, oxidative stress, mitochondrial dysfunction and energy failure.

### 2.1 Excitotoxicity

Based on the reduction of glutamate transporter-1 (GLT1 in rodents and excitatory amino acid transporter 2 or EAAT2 in human) content detected post-mortem in motor cortex and spinal cord of ALS patients (Rothstein et al., 1992; Rothstein et al., 1995) and on the increase of glutamate concentration in the cerebrospinal fluid (CSF) of about 40% of ALS patients (Shaw et al., 1995b; Spreux-Varoquaux et al., 2002), one proposed mechanism to explain

motor neuron death in ALS is glutamate-mediated excitotoxicity. This hypothesis has been generally accepted, although some data from our laboratory do not support it because a chronic increase in extracellular glutamate due to glutamate transport inhibition in the spinal cord in vivo was innocuous for motor neurons (Tovar-y-Romo et al., 2009b). However, overactivation of glutamate ionotropic receptors by agonists leads to neuronal death by augmenting the influx of  $\text{Ca}^{2+}$  into motor neurons. Experimental models in vivo have shown that of three major glutamate ionotropic receptor types, NMDA (N-methyl-D-aspartate), kainate and AMPA ( $\alpha$ -amino-3-hydroxy-5-isoxazolepropionate), the  $\text{Ca}^{2+}$ -permeable AMPA receptor seems to be particularly involved in motor neuron death, because the selective blockade of  $\text{Ca}^{2+}$ -permeable AMPA receptors or the chelation of intracellular  $\text{Ca}^{2+}$  prevents the motor neuron loss and the consequent paralysis induced by the infusion of AMPA into the rat lumbar spinal cord (Corona & Tapia, 2004, 2007; Tovar-y-Romo et al., 2009a). The  $\text{Ca}^{2+}$  permeability of this receptor is governed by the presence of the GluR2 subunit and its edition in the Q/R (glutamine/arginine) site of the second transmembrane domain (Burnashev et al., 1992; Corona & Tapia, 2007; Hollmann et al., 1991; Hume et al., 1991).

Increases in cytoplasmic  $\text{Ca}^{2+}$  concentration can be buffered by mitochondria, but when maintained for prolonged periods can cause mitochondrial swelling and dysfunction. These alterations are associated with deficits in mitochondrial ATP synthesis and energetic failure (this topic will be discussed later). The energetic deficits have been mainly associated with cell death process similar to necrosis (Kroemer et al., 2009; Martin, 2010). On the other hand, mitochondrial damage has also been linked to the release of proapoptotic factors such as cytochrome c and apoptosis-inducing factor (Martin et al., 2009). Cytochrome c involvement has been stressed because of its role in triggering the caspases pathway, which leads to apoptotic cellular death. In the cytoplasm cytochrome c promotes the formation of the apoptosome complex and activates caspase-3. The necrosis and apoptosis pathways are illustrated in Fig. 1.

## 2.2 Axonal transport deficits

Because of the structural and functional characteristics of motor neuron axons, the role of axonal transport is essential for the communication between the neuronal soma and the periphery, as well as for the anterograde and retrograde dispersive distribution of cargo intracellular structures such as vesicles or organelles. Changes in the speed of anterograde and retrograde transport (Breuer & Atkinson, 1988; Breuer et al., 1987; Sasaki & Iwata, 1996), as well as neurofilament disorganization and accumulation of mitochondria, vesicles and smooth endoplasmic reticulum have been described in peripheral nerves of ALS patients (Hirano et al., 1984a, b; Sasaki & Iwata, 1996). These alterations in axonal transport have been observed also in transgenic models of FALS, which have allowed the study of their progression and the molecular machinery involved (Bilsland et al., 2010; Brunet et al., 2009; Collard et al., 1995; De Vos et al., 2007; Ligon et al., 2005; Perlson et al., 2009; Pun et al., 2006; Tateno et al., 2009; Warita et al., 1999; Williamson & Cleveland, 1999). In mutant SOD1 (mSOD1) rodents, some motor proteins such as: dynein, dynactin, kinesin, myosin, actin, and microtubules and neurofilaments are affected by mSOD1 aggregates (Breuer & Atkinson, 1988; Breuer et al., 1987; Collard et al., 1995; Ligon et al., 2005; Sasaki & Iwata, 1996; Williamson & Cleveland, 1999; Zhang et al., 2007).

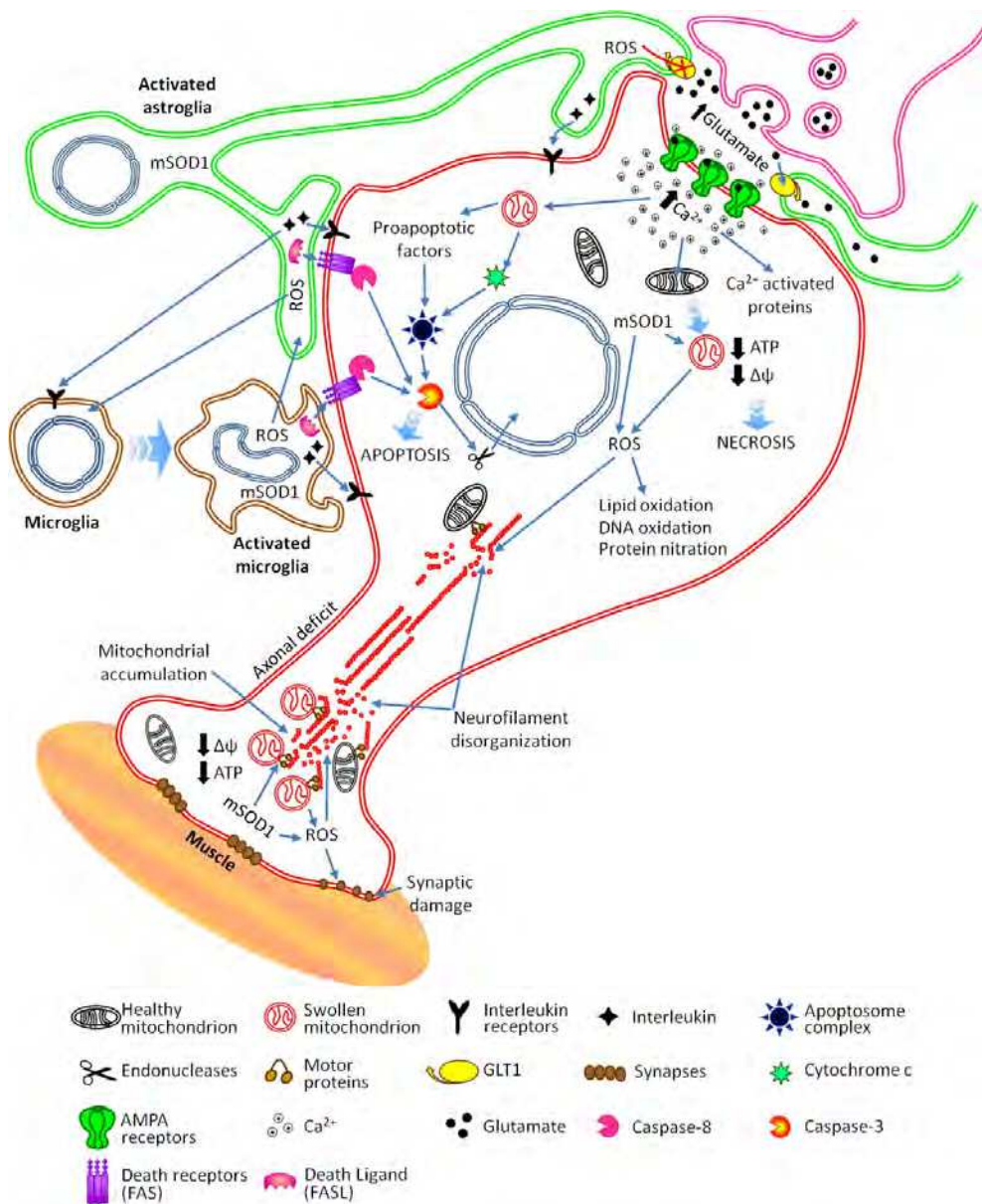


Fig. 1. Scheme of the main proposed mechanisms involved in motor neuron death. Description in the text.

These deficits may affect the renewal of organelles in the axon terminals of motor neurons, leading to accumulation of damaged mitochondria or autophagosomes, increased ROS production, disruption of microtubule formation and stability (Julien & Mushynski, 1998), as well as damage of presynaptic structure such as swelling of axon terminals (Komatsu et al., 2007). Accumulation of damaged mitochondria may result in energetic failure (Liu et al., 2004; Martin et al., 2009; Menzies et al., 2002a, b; Pasinelli et al., 2004; Wong et al., 1995; Zhu et al., 2002) and in the release of proapoptotic factors (Pasinelli et al., 2004) (Fig. 1, bottom left). These alterations may be involved in the distal neurophaty and impairment of muscular reinnervation observed in ALS.

### 2.3 Oxidative stress

Another mechanism implicated in motor neuron degeneration in ALS that involves both motor neurons and non-neuronal cells is oxidative stress. Reactive oxygen species (ROS) arise in cells as aerobic metabolism by-products, mostly due to the leakage of electrons from the mitochondrial respiratory chain, resulting in an incomplete reduction of molecular oxygen during the oxidative phosphorylation, generating the superoxide radical anion ( $O_2^{\cdot-}$ ). The  $O_2^{\cdot-}$  anion reacts quickly with the nitric oxide radical ( $NO^{\cdot}$ , produced by nitric oxide synthase, NOS) to form peroxynitrite ( $ONOO^-$ ). Meanwhile, the product of  $O_2^{\cdot-}$  dismutation,  $H_2O_2$ , slowly decomposes to form the highly reactive hydroxyl radical ( $\cdot OH$ ). Both  $ONOO^-$  and  $\cdot OH$  are highly reactive and can damage proteins, membranes and DNA by oxidation. Cellular mechanisms to combat the constant production of free radicals are: 1) enzymes such as SOD, catalase and peroxidase, which catalytically remove reactive species; 2) reducing agents synthesized in vivo, such as glutathione,  $\alpha$ -keto acids, lipoic acid and coenzyme Q, and compounds obtained from the diet, such as ascorbate (vitamin C) and  $\alpha$ -tocopherol (vitamin E); and 3) chaperone heat shock proteins which remove or facilitate repair of damaged proteins. Oxidative stress arises from an imbalance between ROS production and its control mechanisms.

The involvement of oxidative stress in ALS pathogenesis is supported by abundant evidence that has been reported in both SALS and FALS patients, where several indicators of increased oxidative damage have been found: 1) In postmortem central nervous system (CNS) tissue samples (mainly spinal cord) these markers include oxidized DNA (Ferrante et al., 1997b; Fitzmaurice et al., 1996), lipid peroxidation (Siciliano et al., 2002), protein glycooxidation (Shibata et al., 2001), elevated protein carbonylation (Ferrante et al., 1997b; Shaw et al., 1995a), and increased protein tyrosine nitration; remarkably, nitrotyrosine immunoreactivity was more densely detected in motor neurons (Abe et al., 1995; Abe et al., 1997; Beal et al., 1997; Ferrante et al., 1997a). 2) Oxidation markers in CSF, plasma and blood from living ALS patients during the course of the disease have also been described. The most relevant are oxidized DNA (Bogdanov et al., 2000; Ihara et al., 2005), hydroxyl and ascorbate free radicals (Ihara et al., 2005), lipid peroxidation (Baillet et al., 2010; Bogdanov et al., 2000; Bonnefont-Rousselot et al., 2000; Ihara et al., 2005; Oteiza et al., 1997; Simpson et al., 2004; Smith et al., 1998), and a remarkable elevation of 3-nitrotyrosine levels in CSF (Tohgi et al., 1999). However, in other study, 3-nitrotyrosine was not different between the CSF of ALS patients and control subjects (Ryberg et al., 2004). Increased oxidative damage to proteins, lipids and DNA has also been demonstrated in CNS tissue of transgenic mouse model of FALS expressing mSOD1 (Andrus et al., 1998; Casoni et al., 2005; Liu et al., 1999; Liu et al., 1998; Poon et al., 2005).

Mitochondria, ROS and glutamate-induced excitotoxicity are closely related and this is relevant in ALS, because the mitochondrion is the main oxygen consumer and it is also the main producer of ROS. These species can be produced in neurons and in non-neuronal cells and can cause failure in the glutamate uptake system of both motor neurons and astroglia (Rao et al., 2003; Trotti et al., 1996, 1998; Volterra et al., 1994; Zagami et al., 2009). This may contribute to an excitotoxic condition due to increased concentration of extracellular glutamate. ROS production and its effects on motor neurons and non-neuronal cells are illustrated in Fig. 1.

## 2.4 Inflammation

A mechanism of non-cell-autonomous death associated with motor neuron degeneration in both FALS and SALS is the participation of non-neuronal cells in inflammatory events (Boillee et al., 2006a; Boillee et al., 2006b; Hall et al., 1998; Yamanaka et al., 2008; Yang et al., 2011). The main histopathological feature of inflammation is the proliferation of reactive astrogliosis and of activated microglial cells, associated with alterations in their cellular functions, such as glutamate reuptake failure and release of proapoptotic and proinflammatory factors (Sanagi et al., 2010; Sargsyan et al., 2005; Sofroniew, 2005). Molecules associated with inflammatory process, such as interleukins 6, 12, 15, 17A, 23, C4d and C3d complement proteins, as well as tumor necrosis factor-alpha, have been found in blood and CSF from ALS patients (Almer et al., 2002; Fiala et al., 2010; Henkel et al., 2004; Kawamata et al., 1992; McGeer et al., 1991; Moreau et al., 2005; Rentzos et al., 2010a, b). The finding of increased levels of granzymes A, B in serum (Ilzecka, 2011) and decrease in cytochrome c levels in the CSF (Ilzecka, 2007), suggests an apoptotic process in human disease. The proliferation of activated non-neuronal cells has been associated with the disease severity (Clement et al., 2003). Nevertheless, alteration in their functions may be more important than their proliferation (Lepore et al., 2008). In experimental models of FALS (mSOD1) it has been attempted to prevent the motor neuron loss through the use of drugs with anti-inflammatory properties, such as minocycline (Keller et al., 2010; Kriz et al., 2002; Neymotin et al., 2009; Van Den Bosch et al., 2002; Zhu et al., 2002). This drug was effective in delaying the motor neurons loss when given prior to the symptoms onset, but when given at late stages it exaggerated the neuroinflammatory response and accelerated the progression of the symptoms (Keller et al., 2010). In this transgenic ALS model, apoptosis processes can be triggered by non-neuronal cells through the extrinsic apoptotic pathway, via the release from activated glial cells of several death ligands (for example FasL) that bind to their respective death receptor (Fas) and trigger the cleavage of caspase-8 (Locatelli et al., 2007; Petri et al., 2006; Raoul et al., 2006) (Fig. 1).

## 3. Mitochondrial dysfunction in ALS and in experimental motor neuron degeneration

A convergent point of the deleterious mechanisms discussed above is the mitochondrion. This organelle is the main energy producer in eukaryotic cells and plays a fundamental role in normal cell physiology. Among the functions mitochondria carry out, besides ATP synthesis, intracellular  $\text{Ca}^{2+}$  buffering has been recognized as another relevant factor for the protection against deleterious processes such as oxidative stress, excitotoxicity and necrotic and apoptotic death, thus playing a central role in neuronal survival.

Mitochondria are closely related to necrotic and apoptotic processes, which are the main cellular death mechanisms. During necrosis, mitochondria undergo rapid swelling and lysis. Although apoptosis is an energy-dependent active process, sometimes mitochondrial morphological alterations are associated with the intrinsic-apoptosis pathway. Furthermore, it is now recognized that apoptosis and necrosis are not two mutually exclusive processes, but they can occur simultaneously or one preceding the other (Kroemer et al., 2009; Martin, 2010; Martin et al., 2009; Shrivastava & Vivekanandhan, 2011).

As the organelle responsible for energy production in the cell, mitochondria possess the enzymatic machinery to catalyze the oxidation of various substrates generated inside and outside mitochondria, including pyruvate through pyruvate dehydrogenase, fatty acids through  $\beta$ -oxidation, and carbon chains from amino acids. Energy is obtained by oxidation of all these biomolecules to finally  $\text{CO}_2$  and  $\text{H}_2\text{O}$  through the tricarboxylic acid cycle and the respiratory chain. The tricarboxylic acid cycle is the converging point because the carbon skeletons of carbohydrates and fatty acids are metabolized to yield the acetyl group of acetyl-Coenzyme A, and many of the carbons of the amino acid skeleton also enter the cycle via its conversion to some cycle intermediates. The reducing equivalents generated in the tricarboxylic acid cycle reactions reduce pyridine and flavin nucleotides to NADH and  $\text{FADH}_2$ . These electron transporters enter the respiratory chain, where electron flux through various redox carriers and centers in the enzyme complexes located in the inner mitochondrial membrane finally reduces  $\text{O}_2$  to  $\text{H}_2\text{O}$ ; this flux is coupled to ATP synthesis through oxidative phosphorylation.

The energy released by the electron flux through respiratory chain complexes is used to pump protons through the inner mitochondrial membrane, producing an alkaline and negatively charged mitochondrial matrix, as compared to the intermembrane space, thus creating a proton gradient. This proton gradient generates an electrochemical potential called proton-motive force ( $\Delta p$ ), which supplies the energy to ATP synthase for ATP synthesis from ADP and inorganic phosphate. The  $\Delta p$  depends mainly on the mitochondrial transmembrane potential ( $\Delta\psi_m$ ), which is the electric potential (negative inside), but it also depends on the transmembrane pH gradient ( $\Delta\text{pH}$ ), which is the chemical potential (alkaline inside). Energy stored in the proton gradient can also transport solutes against concentration gradient across the membrane. The  $\Delta\psi_m$  is a central parameter that controls three fundamental and highly relevant cellular processes for neuronal survival: ATP synthesis, mitochondrial  $\text{Ca}^{2+}$  sequestration, and mitochondrial ROS generation. On the other hand,  $\Delta\psi_m$  is controlled by substrate availability, ATP demand, respiratory chain capacity, mitochondrial proton conductance, and mitochondrial  $\text{Ca}^{2+}$  sequestration (Nicholls & Budd, 2000). Therefore, mitochondrial bioenergetic status is crucial for controlling the susceptibility of neurons to chronic or acute stress and also in determining cellular fate (survival, apoptosis or necrosis).

Owing to the great relevance of mitochondria, their morphological, ultrastructural and functional characteristics have been studied in ALS patients. Deficits in respiratory chain complexes I and IV activities have been detected in the spinal cord and skeletal muscle (Borthwick et al., 1999; Crugnola et al., 2010; Vielhaber et al., 2000; Wiedemann et al., 2002; Wiedemann et al., 1998), and a temporal study of mitochondrial respiratory function in skeletal muscle in SALS demonstrated that respiratory complex IV activity is progressively altered as the disease develops (Echaniz-Laguna et al., 2006). Some cases of ALS have been described as a mitochondriopathy (Finsterer, 2002, 2003) including a mitochondrial DNA

mutation in the gene encoding subunit I of the mitochondrial respiratory chain complex IV (Comi et al., 1998). The electron transport chain proteins FAD synthetase, riboflavin kinase, cytochrome C1, and succinate dehydrogenase complex subunit B expression were significantly decreased in some ALS patients (Lin et al., 2009).

In the mSOD1 mice or cell culture familial ALS model, complexes I, II and IV of the electron transport chain exhibit decreased enzyme activities, even at early stages of the disease (Jung et al., 2002; Mattiazzi et al., 2002; Menzies et al., 2002a,b). In G93A-SOD1 mice the association of cytochrome c with the inner mitochondrial membrane was reduced and there was a significant decrease in respiratory chain complex IV (Kirkinetzos et al., 2005). SOD-containing aggregates (Higgins et al., 2002; Jaarsma et al., 2001; Pasinelli et al., 2004) and decreased oxygen consumption, lack of ADP-dependent respiratory control, and decreased membrane potential (Cassina et al., 2008), were observed in mitochondria from spinal cord of transgenic mSOD1 rodents.

In neuronal cultures, glutamate-mediated excitotoxicity caused significant changes in mitochondrial function, such as decline in ATP levels, mitochondrial transmembrane potential collapse, decreased mitochondrial and cellular oxygen consumption, and oxidative phosphorylation uncoupling, all these events preceding cell death (Ankarcrona et al., 1995; Atlante et al., 1996; Maus et al., 1999; Monje et al., 2001). There is a link between excitotoxicity-induced intracellular  $Ca^{2+}$  overload and the collapse of  $\Delta\psi_m$ , since intracellular  $Ca^{2+}$  increase and its accumulation in mitochondria are sufficient to induce prominent and persistent depolarization, leading to mitochondrial dysfunction and to neuronal death *in vitro* (Schinder et al., 1996; White & Reynolds, 1996).

Few studies on excitotoxicity have been carried out *in vivo*. In our laboratory we have developed two experimental models of spinal motor neurons degeneration by overactivation of AMPA receptors, both by infusing AMPA directly in the lumbar spinal cord of rats. In the first one AMPA is administered through microdialysis cannulas during short time periods (Corona & Tapia, 2004) and in the other AMPA is infused chronically during several days, using osmotic minipumps (Tovar-y-Romo et al., 2007). These models reproduce the main histopathological features of ALS: loss of lumbar motor neurons, astroglial activation and motor deficits that progresses to complete paralysis of the rear limbs. The main difference between the two models is the time required for the occurrence of motor neuron degeneration and the development of the paralysis. AMPA perfusion by microdialysis causes a rapid loss of motor neuron and paralysis, occurring within the initial 12 hours, while chronic AMPA infusion with osmotic minipumps triggers a progressive motor neuron loss and motor deficits throughout three to four days. For these reasons, the microdialysis model is defined as an acute model and the minipumps model as a chronic model of spinal motor neuron degeneration by excitotoxicity (Tovar-y-Romo et al., 2009a). The most important feature of both models is that motor neuron loss occurs without the influence of a genetic factor and thus presumably can be used to study the mechanisms that may be involved in motor neuron loss occurring in SALS, which accounts for over 90% of ALS cases.

We have recently assessed mitochondrial function in our acute model of spinal excitotoxic motor neuron degeneration, by studying mitochondrial oxygen consumption and transmembrane potential in mitochondria isolated from the lumbar spinal cord of rats perfused with AMPA. The AMPA-treated group showed decreased oxygen consumption, ADP-dependent respiratory control and transmembrane potential, as compared to control

rats perfused only with Krebs-Ringer medium (Santa-Cruz and Tapia, in preparation). These results suggest that mitochondrial dysfunction plays a crucial role in spinal motoneuron degeneration induced by overactivation of AMPA receptors *in vivo*. These mechanisms could be involved in ALS motoneuron degeneration.

### 3.1 Ca<sup>2+</sup>, mitochondria and motor neuron degeneration

Under physiological conditions, Ca<sup>2+</sup> participates as intracellular messenger in many normal cellular functions, such as cell growth, differentiation, signal transduction, membrane excitability regulation, exocytosis and synaptic activity. Cytoplasmic Ca<sup>2+</sup> concentration in resting neurons is maintained at low concentrations (~100 nM), 10,000 times lower than extracellular space concentration. To achieve this, neurons possess specialized homeostatic mechanisms, such as regulation of Ca<sup>2+</sup> input and output, Ca<sup>2+</sup> binding proteins, mitochondrial and endoplasmic reticulum storage, and Ca<sup>2+</sup>-ATPases. Moreover, neurons not only control intracellular Ca<sup>2+</sup> levels, but also its location in the cell by means of complex interactions among Ca<sup>2+</sup> input, output, buffering and internal storage. Under physiological conditions, these processes maintain spatial and temporal location of Ca<sup>2+</sup>, so that multiple Ca<sup>2+</sup>-regulated signaling pathways can take place independently within the same cell.

Excessive intracellular Ca<sup>2+</sup> concentration damages neurons through several mechanisms, including mitochondrial damage, energy metabolism deficit, toxic ROS generation, membrane depolarization, and activation of lytic enzymes such as proteases, lipases, phosphatases and endonucleases. Intracellular Ca<sup>2+</sup> accumulation also stimulates ROS production through NOS activation and the conversion of xanthine dehydrogenase to xanthine oxidase through proteases activation. All these events eventually produce membrane destruction and neuronal death (Arundine & Tymianski, 2003; Shaw, 1999).

Intracellular Ca<sup>2+</sup> regulation is an expensive process from the energy point of view. Ca<sup>2+</sup> is extruded from the cell and sequestered into the endoplasmic reticulum through active transport using Ca<sup>2+</sup>-ATPases, and it is also removed by secondary active transport using the Na<sup>+</sup>/Ca<sup>2+</sup> exchanger, which activates Na<sup>+</sup>/K<sup>+</sup>-ATPases to take out Na<sup>+</sup>. Mitochondria also play a critical role in the regulation of cytosolic Ca<sup>2+</sup> concentration, since they sequester this cation through a Ca<sup>2+</sup> uniporter located in the inner mitochondrial membrane and driven by the electric potential (Nicholls, 1985). To prevent a potentially lethal Ca<sup>2+</sup> accumulation in mitochondrial matrix, there is an output system that exchanges Na<sup>+</sup>/Ca<sup>2+</sup>, besides a mitochondrial Na<sup>+</sup>/H<sup>+</sup> transporter that extrudes Na<sup>+</sup>, so that ion flux under a constant Ca<sup>2+</sup> entrance to mitochondria involves a sequential transfer of Ca<sup>2+</sup>, Na<sup>+</sup> and H<sup>+</sup>, the latter driven by the respiratory chain (Crompton & Heid, 1978; Nicholls & Budd, 2000). When Ca<sup>2+</sup> concentration surpasses a certain critical point, under physiological phosphate concentration an osmotically inactive and rapidly dissociable Ca<sup>2+</sup>-phosphate complex is formed in the mitochondrial matrix, so that mitochondria work as efficient buffers of extramitochondrial Ca<sup>2+</sup> by accumulating this cation (Becker et al., 1980; Nicholls, 1978). Apparently, this organelle acts as a temporary Ca<sup>2+</sup> store during high cytoplasmic concentrations peaks, as suggested by the kinetics of mitochondrial Ca<sup>2+</sup> transport; because the Ca<sup>2+</sup>-phosphate complex is rapidly dissociable, mitochondria can release Ca<sup>2+</sup> back to the cytoplasm when its concentration decreases below the critical point. As long as mitochondria are polarized, cytosolic Ca<sup>2+</sup> accumulates within the mitochondrial matrix through the Ca<sup>2+</sup> uniporter. Mitochondrial Ca<sup>2+</sup> uptake is driven by  $\Delta\psi_m$ , so it will compete with ATP synthase for proton gradient, in such a way that Ca<sup>2+</sup> uptake could dominate due



to the fact that ATP synthesis requires a thermodynamic threshold for  $\Delta\Psi_m$ , while  $\text{Ca}^{2+}$  transport can proceed at much lower  $\Delta\Psi_m$  and excessive  $\text{Ca}^{2+}$  concentrations reduce  $\Delta\Psi_m$  dramatically. When  $\text{Ca}^{2+}$  concentration does not recover below the critical point, excessive  $\text{Ca}^{2+}$  overload in the mitochondrial matrix can lead to mitochondrial swelling, loss of respiratory control, increased mitochondrial ROS generation,  $\Delta\Psi_m$  collapse (depolarization) diminished ATP synthesis, and  $\text{Ca}^{2+}$  release from the mitochondrial matrix caused by inner mitochondrial membrane permeabilization through the mitochondrial permeability transition pore (MPTP, a large protein complex forming a non-selective pore through the inner mitochondrial membrane) (Al-Nasser & Crompton, 1986; Nicholls & Budd, 2000; Peng & Jou, 2010). When mitochondrion depolarizes, accumulated  $\text{Ca}^{2+}$  goes back into the cytoplasm, either through the  $\text{Ca}^{2+}$  uniporter, the  $\text{Na}^+/\text{Ca}^{2+}$  exchanger, or through the MPTP. Since  $\Delta p$  depends mainly on  $\Delta\Psi_m$ , its collapse causes  $\Delta p$  collapse, which results not only in halting ATP synthesis but also in a rapid cytoplasmic ATP hydrolysis because ATP synthase catalytic function reverses in an attempt to restore  $\Delta p$ .

In motor neurons, the damage produced by these alterations may be enhanced because they do not have sufficient mitochondrial  $\text{Ca}^{2+}$ -buffering capacity, due in part to a lower mitochondrial density per volume compared to non-motor neurons (Grosskreutz et al., 2007). In addition, other buffering mechanisms are deficient in spinal and cortical motor neurons because they lack the  $\text{Ca}^{2+}$ -binding proteins calbindin D-28K and parvalbumin. This may explain why other motor neurons that express these proteins, such as those located in oculomotor and Onuf's nuclei, are not usually affected in ALS (Alexianu et al., 1994; Celio, 1990; Ince et al., 1993; Palecek et al., 1999). For all these reasons, mitochondrial  $\text{Ca}^{2+}$  overload plays a key role in glutamatergic excitotoxicity (Nicholls et al., 2003), given that overactivation of  $\text{Ca}^{2+}$ -permeable AMPA receptors, which are abundant in spinal motor neurons, confers to these cells a special vulnerability to AMPA receptor-mediated excitotoxicity (Corona & Tapia, 2007; Grosskreutz et al., 2010). AMPA exposure to spinal motor neuron cultures results in an intracellular  $\text{Ca}^{2+}$  concentration increase that triggers mitochondrial  $\text{Ca}^{2+}$  overload, depolarization and ROS generation (Carriedo et al., 2000). So, there is abundant evidence that suggest that mitochondrial damage, probably related to  $\text{Ca}^{2+}$  homeostasis disturbances, is involved in SALS and FALS (Manfredi & Xu, 2005; Menzies et al., 2002a; Swerdlow et al., 1998; von Lewinski & Keller, 2005).

### 3.2 Energy deficits

Due to the large size of motor neurons and their long processes reaching muscles, they have an expensive energy cost and this renders them very vulnerable to energy deficits. Much of the ATP demand in neurons is used in the ion pumping through plasma membrane to maintain membrane potential. Thus,  $\text{Na}^+/\text{K}^+$ -ATPase is the most demanding ATP process in neurons (Scott & Nicholls, 1980) in order to expel  $\text{Na}^+$  excess resulting from excitation. Intracellular  $\text{Ca}^{2+}$  regulation by  $\text{Ca}$ -ATPases is also highly energy consuming, as previously discussed.

There is abundant evidence both *in vitro* and *in vivo* that any restriction in the ability of the cell to generate ATP can exacerbate or even induce glutamatergic excitotoxicity. The energy-linked excitotoxic hypothesis (Beal et al., 1993; Greene & Greenamyre, 1996; Novelli et al., 1988) proposes that the correlation between excitotoxic damage and energy restriction is due to plasma membrane depolarization. Diminished ATP levels cause a decrease in  $\text{Na}^+/\text{K}^+$ -ATPase and  $\text{Ca}^{2+}$ -ATPase functions, lessening  $\text{Na}^+$  and  $\text{Ca}^{2+}$  removal. This triggers plasma

membrane depolarization and as a consequence  $\text{Ca}^{2+}$  enters the cell through voltage-dependent  $\text{Ca}^{2+}$  channels and glutamate is released to the extracellular space by exocytosis. This in turn activates  $\text{Ca}^{2+}$  influx through the NMDA receptor, which is also voltage-dependent. Further, under energetic failure conditions, glutamate transporters operate in reverse because  $\text{Na}^+/\text{K}^+$  electrochemical gradient collapse due to ATP decrease, resulting in diminished glutamate uptake and non-vesicular glutamate release into extracellular space (Jabaudon et al., 2000; Longuemare & Swanson, 1995).

The observation that inhibition of mitochondrial respiratory chain complexes activity can induce pathological changes similar to those observed in some neurodegenerative diseases in specific CNS regions has generated great interest. Association among glutamatergic excitotoxicity and bioenergetic limitation has been proposed for Alzheimer, Parkinson, Huntington's disease and ALS (Beal, 1998), and in many cases specific respiratory chain complexes are involved. In organotypic spinal cord cultures, motor neurons are selectively vulnerable to chronic mitochondrial blockade by inhibitors of mitochondrial respiratory chain complex II and complex IV and this motor neuron degeneration displays structural changes similar to those seen following excitotoxicity (Brunet et al., 2009; Kaal et al., 2000).

In our acute model of excitotoxic motor neuron degeneration previously described (Corona & Tapia, 2004, 2007) we have demonstrated the importance of  $\text{Ca}^{2+}$ -permeable AMPA receptors and of intracellular  $\text{Ca}^{2+}$  overload in motor neuron death process. Using this model, we aimed to study the importance of energy deficits and oxidative stress in AMPA-induced degeneration. With this purpose, we assessed the potential neuroprotection of various energy substrates and antioxidants at different concentrations, co-perfusing them with AMPA in the rat lumbar spinal cord. We observed protection at different degrees depending on the concentration of each compound, but in general antioxidants only partially protected, while various energy substrates prevented the AMPA-induced motor impairment and the spinal motor neuron loss (Santa-Cruz and Tapia, in preparation). These findings suggest that intracellular  $\text{Ca}^{2+}$  overload in vivo disrupts mitochondrial energy metabolism. On the other hand, energy substrates can directly prevent  $\Delta\psi_m$  collapse and thus prevent mitochondrial dysfunction. Because one of the factors that control  $\Delta\psi_m$  is substrate availability, excess mitochondrial substrates administered exogenously can stimulate respiratory chain and increase oxidative phosphorylation, maintaining the electrochemical proton gradient and thus preventing the collapse of ATP synthesis.

### 3.3 Oxidative stress

Since mitochondria are the organelles where oxidative phosphorylation is accomplished, they consume about 98 % of the cell oxygen requirement and constitute a major site for intracellular ROS production. Some steps along mitochondrial oxygen reduction pathway have the potential to produce, and indeed generate free radicals, due to the fact that electron flux along respiratory chain may have leakage of electrons to oxygen. The intermediate radical ubiquinone, involved in the transfer of electrons through respiratory complexes III and I, can grant an electron to oxygen, forming the superoxide radical  $\text{O}_2^{\cdot-}$ , a powerful oxidant and a very reactive intermediate (Turrens et al., 1985) that must be rapidly removed by antioxidant enzymes to avoid its lethal effects. About 0.1-4% of the  $\text{O}_2$  used by actively respiring mitochondria is converted to  $\text{O}_2^{\cdot-}$ . Nevertheless, respiratory chain enzymes defects or other mitochondrial perturbations could be responsible of an excessive mitochondrial

ROS production, triggering or increasing cellular injury. Among them, mitochondrial  $\text{Ca}^{2+}$  overload resulting from NMDA, AMPA or kainate receptor overactivation (Carriedo et al., 1998; Carriedo et al., 2000; Dugan et al., 1995) increases ROS production (Dykens, 1994; Peng & Jou, 2010); thus, an initial excitotoxic event might also contribute to increased oxidative stress.

In addition, it is important to consider that mitochondria are not only ROS producers but also that they are a susceptible target of them. Thereby, in a pathologic situation where an increased ROS production occurs initially, oxidative damage to mitochondrial lipids, nucleic acids and proteins can reduce mitochondrial respiration, disturb normal function and seriously damage this organelle (Lenaz et al., 2002). Furthermore, mitochondrial DNA is more susceptible to oxidative damage than nuclear DNA, due to its close location next to an important ROS production site, to the lack of protective histones and to less effective repair mechanisms, as compared to the nuclear DNA (Richter et al., 1988). Mitochondrial redox status also influences the opening of the MPTP, since it is enhanced by oxidative stress in isolated mitochondria (Saxena et al., 1995).

#### **4. Mitochondrial structural damage in ALS and experimental motor neuron degeneration**

The death process involved in the motor neuron loss characteristic of ALS is not yet fully understood. Several functional alterations present in both human disease and experimental models have been reviewed in the previous sections, but several studies have shown also morphological and ultrastructural changes in motor neurons that may be associated with apoptosis and/or necrosis.

Postmortem examination of ALS patients tissues has revealed morphological and ultrastructural abnormalities in mitochondria. Atypical mitochondrial aggregates were found in skeletal muscle subsarcolemmal region and in intramuscular axons (Afifi et al., 1966; Atsumi, 1981), and morphological abnormalities were also detected in proximal axons, as well as dense clusters of mitochondria in the ventral horn of spinal cord SALS patients (Hirano et al., 1984a; b; Sasaki & Iwata, 1996). Giant mitochondria with intramitochondrial inclusions were observed in the liver of some ALS patients and these alterations were disease specific (Nakano et al., 1987). Further, mitochondria with increased volume and with high  $\text{Ca}^{2+}$  concentration were found in motor nerve terminals in muscle biopsies of alive ALS patients, which were not observed in patients with other neuropathies or in control subjects (Siklos et al., 1996). Ultrastructural damage of mitochondria, characterized by swelling and rounding, was recently described in platelets of ALS patients (Shrivastava & Vivekanandhan, 2011; Shrivastava et al., 2011a,b).

The main problem with pathological studies in human ALS is the difficulty in determining whether the alterations observed are a cause or a consequence of the disease. This highlights the importance of developing experimental models of motor neuron death to study the temporal progress of the morphological changes, including the alterations of mitochondrial structure. With this objective, we have recently studied the ultrastructural changes of mitochondria in both our acute and chronic models of spinal motor neuron death described above. In the acute model we observed motor neurons with mitochondrial swelling as soon as 2 h after AMPA perfusion, followed in a few hours by the rupture of mitochondrial, nuclear and plasma membranes, which led to total neuronal disruption. These ultrastructural alterations are characteristic of a necrotic process. In contrast, in the chronic

model we observed by day one swelling of the endoplasmic reticulum and only later progressive alterations in mitochondrial internal and external membranes that generated mitochondrial swelling. So, the initial mitochondrial integrity might indicate an apoptotic process, although motor neurons eventually probably die by a slow necrotic process (Fig. 2; Ramírez-Jarquín and Tapia, in preparation). The mitochondrial swelling observed in both models may be associated with energy failure, which as discussed above causes ATP depletion, oxidative stress and inflammatory events, leading to cell death.

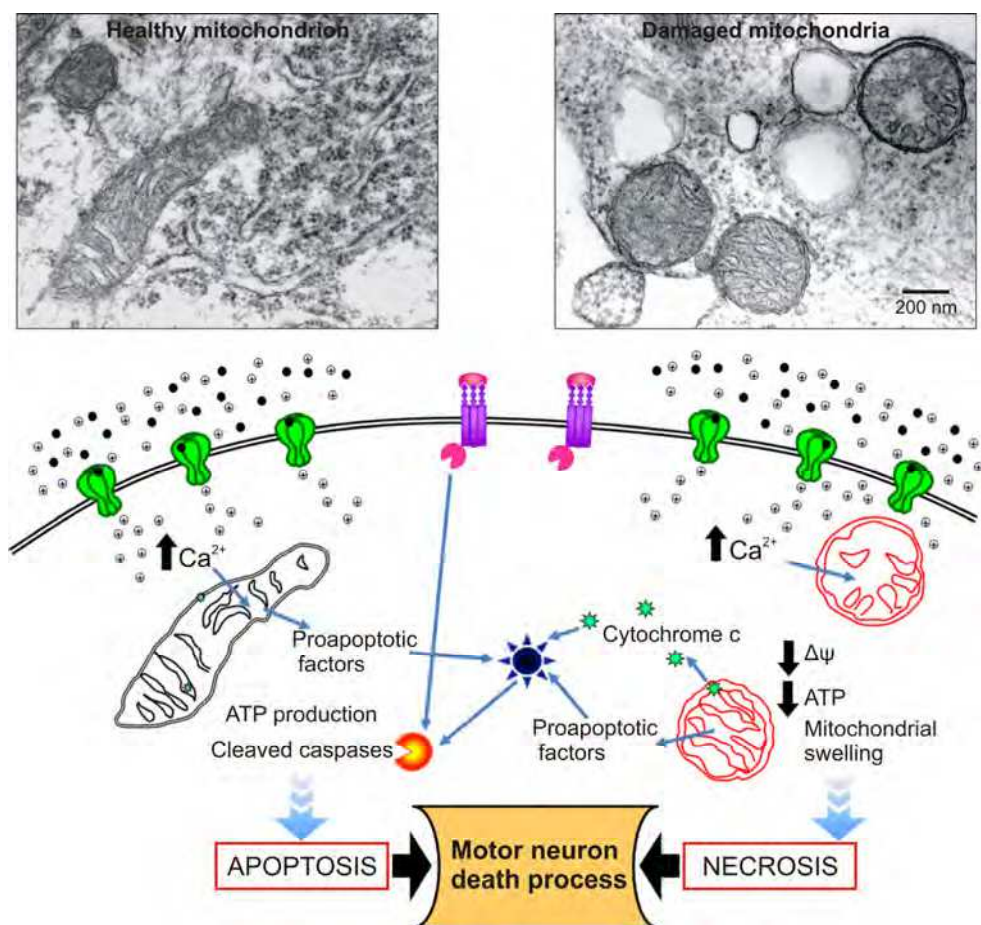


Fig. 2. Role of mitochondrial damage in motor neuron excitotoxicity. The electron-micrographs show normal mitochondria and endoplasmic reticulum in a spinal motor neuron of a control rat (left), and swollen mitochondria with altered cristae observed 2 h after perfusion of AMPA by microdialysis (right) (Ramírez-Jarquín and Tapia, unpublished). Bottom: proposal of the involvement of mitochondrial damage in the apoptosis and necrosis processes leading to motor neuron death. The symbols are the same as in Fig. 1. Description in the text.

The mitochondrial damage seen in our models is similar to those observed in the human disease and also in muscle and spinal cord of mSOD1 rodent models, namely mitochondrial fragmentation, enlargement, vacuolization, rearrangement of the cristae and swelling (Bendotti et al., 2001; Kong & Xu, 1998; Martin et al., 2009; Menzies et al., 2002b; Wong et al., 1995). The observed rearrangement of the inner membrane to form small vacuoles has been associated with an alteration in the MPTP permeability and also with the trigger of intrinsic-apoptosis pathway by release of proapoptotic factors, such as cytochrome c (Bendotti et al., 2001; Martin, 2010; Martin et al., 2009; Ohta et al., 2008) followed by the cleavage of caspases (Li et al., 2000; Pasinelli et al., 2000) Fig. 2 illustrates the ultrastructural mitochondrial damage and shows a schematic representation of the mechanisms associated with these alterations.

## 5. Conclusions

Altogether the foregoing data suggest that mitochondrial respiratory chain damage is a relevant event in ALS pathogenesis, although it is still unknown if mitochondrial abnormalities are the cause of the disease process or if they are consequence of neuronal degeneration. However, it is clear from the evidence reviewed here that mitochondria definitely play a central role in determining the fate of motor neurons and in their degeneration process. This evidence comes from studies in several tissues of ALS patients, both from biopsies or from postmortem observations, and from direct measurements of mitochondrial function in experimental models of motor neuron degeneration, both *in vitro* and *in vivo*. These experiments clearly point to energy deficits and disruption of  $\text{Ca}^{2+}$  homeostasis and axonal transport.

Integrity of the mitochondria morphology and structure is pivotal for their function and for cellular health. It is interesting that similar structural alterations have been observed in ALS tissues and in *in vitro* and *in vivo* models of motor neuron degeneration, including transgenic mSOD1 rodents and excitotoxicity. Clearly, this damage can be associated with the mitochondrial functional deficits, which trigger deleterious process resulting in cellular death by apoptosis, necrosis or a combination of these mechanisms. Although there is biochemical evidence of an apoptotic process involving the mitochondria, no ultrastructural evidence of classic apoptosis, such as apoptotic bodies, has been found. Rather, mitochondrial swelling and membrane disruption are frequently observed, suggesting the predominance of a necrotic process.

The evidence for a role of calcium homeostasis disruption in the induction of neuronal death is vast, and the involvement of mitochondria in this mechanism seems determinant. The advances in the elucidation of this process should help to understand the importance of the preservation of mitochondrial structure and function, which hopefully can lead to the design of preventive and therapeutic measures for ALS.

## 6. Acknowledgement

This work and the authors' experiments cited were supported by Dirección General del Personal Académico, Universidad Nacional Autónoma de México, (project IN215610) and Consejo Nacional de Ciencia y Tecnología (CONACYT), México (project 128229). L.D.S.C. and U.N.R.J. are recipients of a scholarship from CONACYT.

## 7. References

- Abe, K., Pan, L. H., Watanabe, M., Kato, T. & Itoyama, Y. (1995). Induction of nitrotyrosine-like immunoreactivity in the lower motor neuron of amyotrophic lateral sclerosis. *Neuroscience letters*, Vol.199, No.2, (October 1995), pp. 152-154, ISSN 0304-3940.
- Abe, K., Pan, L. H., Watanabe, M., Konno, H., Kato, T. & Itoyama, Y. (1997). Upregulation of protein-tyrosine nitration in the anterior horn cells of amyotrophic lateral sclerosis. *Neurological research*, Vol.19, No.2, (April 1997), pp. 124-128, ISSN 0161-6412.
- Afifi, A. K., Aleu, F. P., Goodgold, J. & MacKay, B. (1966). Ultrastructure of atrophic muscle in amyotrophic lateral sclerosis. *Neurology*, Vol.16, No.5, (May 1996), pp. 475-481, ISSN 0028-3878.
- Al-Nasser, I. & Crompton, M. (1986). The reversible Ca<sup>2+</sup>-induced permeabilization of rat liver mitochondria. *The Biochemical journal*, Vol.239, No.1, (October 1986), pp. 19-29, ISSN 0264-6021.
- Alexianu, M. E., Ho, B. K., Mohamed, A. H., La Bella, V., Smith, R. G. & Appel, S. H. (1994). The role of calcium-binding proteins in selective motoneuron vulnerability in amyotrophic lateral sclerosis. *Annals of neurology*, Vol.36, No.6, (December 1994), pp. 846-858, ISSN 0364-5134
- Almer, G., Teismann, P., Stevic, Z., Halaschek-Wiener, J., Deecke, L., Kostic, V. & Przedborski, S. (2002). Increased levels of the pro-inflammatory prostaglandin PGE<sub>2</sub> in CSF from ALS patients. *Neurology*, Vol.58, No.8, (April 2002), pp. 1277-1279, ISSN 0028-3878.
- Andrus, P. K., Fleck, T. J., Gurney, M. E. & Hall, E. D. (1998). Protein oxidative damage in a transgenic mouse model of familial amyotrophic lateral sclerosis. *Journal of neurochemistry*, Vol.71, No.5, (November 1998), pp. 2041-2048, ISSN 0022-3042.
- Ankarcrona, M., Dypbukt, J. M., Bonfoco, E., Zhivotovsky, B., Orrenius, S., Lipton, S. A. & Nicotera, P. (1995). Glutamate-induced neuronal death: a succession of necrosis or apoptosis depending on mitochondrial function. *Neuron*, Vol.15, No.4, (October 1995), pp. 961-973, ISSN 0896-6273.
- Arundine, M. & Tymianski, M. (2003). Molecular mechanisms of calcium-dependent neurodegeneration in excitotoxicity. *Cell calcium*, Vol.34, No.4-5, (October-November 2003), pp. 325-337, ISSN 0143-4160.
- Atlante, A., Gagliardi, S., Minervini, G. M., Marra, E., Passarella, S. & Calissano, P. (1996). Rapid uncoupling of oxidative phosphorylation accompanies glutamate toxicity in rat cerebellar granule cells. *Neuroreport*, Vol.7, No.15-17, (November 1996), pp. 2519-2523, ISSN 0959-4965.
- Atsumi, T. (1981). The ultrastructure of intramuscular nerves in amyotrophic lateral sclerosis. *Acta neuropathologica*, Vol.55, No.3, pp. 193-198, ISSN 0001-6322.
- Baillet, A., Chantepredrix, V., Trocme, C., Casez, P., Garrel, C. & Besson, G. (2010). The role of oxidative stress in amyotrophic lateral sclerosis and Parkinson's disease. *Neurochemical research*, Vol.35, No.10, (October 2010), pp. 1530-1537, ISSN 1573-6903 (Electronic), 0364-3190 (Linking).
- Beal, M. F. (1998). Mitochondrial dysfunction in neurodegenerative diseases. *Biochimica et biophysica acta*, Vol.1366, No.1-2, (August 1998), pp. 211-223, ISSN 0006-3002.

- Beal, M. F., Hyman, B. T. & Koroshetz, W. (1993). Do defects in mitochondrial energy metabolism underlie the pathology of neurodegenerative diseases? *Trends in neurosciences*, Vol.16, No.4, (April 1993), pp. 125-131, ISSN 0166-2236.
- Beal, M. F., Ferrante, R. J., Browne, S. E., Matthews, R. T., Kowall, N. W. & Brown, R. H., Jr. (1997). Increased 3-nitrotyrosine in both sporadic and familial amyotrophic lateral sclerosis. *Annals of neurology*, Vol.42, No.4, (October 1997), pp. 644-654, ISSN 0364-5134.
- Becker, G. L., Fiskum, G. & Lehninger, A. L. (1980). Regulation of free Ca<sup>2+</sup> by liver mitochondria and endoplasmic reticulum. *The Journal of biological chemistry*, Vol.255, No.19, (October 1980), pp. 9009-9012, ISSN 0021-9258.
- Bendotti, C., Calvaresi, N., Chiveri, L., Prella, A., Moggio, M., Braga, M., Silani, V. & De Biasi, S. (2001). Early vacuolization and mitochondrial damage in motor neurons of FALS mice are not associated with apoptosis or with changes in cytochrome oxidase histochemical reactivity. *Journal of the neurological sciences*, Vol.191, No.1-2, (October 2001), pp. 25-33, ISSN 0022-510X.
- Bilsland, L. G., Sahai, E., Kelly, G., Golding, M., Greensmith, L. & Schiavo, G. (2010). Deficits in axonal transport precede ALS symptoms in vivo. *Proceedings of the National Academy of Sciences of the United States of America*, Vol.107, No.47, (November 2010), pp. 20523-20528, ISSN 1091-6490 (Electronic), 0027-8424 (Linking).
- Bogdanov, M., Brown, R. H., Matson, W., Smart, R., Hayden, D., O'Donnell, H., Flint Beal, M. & Cudkovicz, M. (2000). Increased oxidative damage to DNA in ALS patients. *Free radical biology & medicine*, Vol.29, No.7, (October 2000), pp. 652-658, ISSN 0891-5849.
- Boillee, S., Vande Velde, C. & Cleveland, D. W. (2006a). ALS: a disease of motor neurons and their nonneuronal neighbors. *Neuron*, Vol.52, No.1, (October 2006), pp. 39-59, ISSN 0896-6273.
- Boillee, S., Yamanaka, K., Lobsiger, C. S., Copeland, N. G., Jenkins, N. A., Kassiotis, G., Kollias, G. & Cleveland, D. W. (2006b). Onset and progression in inherited ALS determined by motor neurons and microglia. *Science (New York, N.Y.)*, Vol.312, No.5778, (June 2006), pp. 1389-1392, ISSN 1095-9203 (Electronic), 0036-8075 (Linking).
- Bonnefont-Rousselot, D., Lacomblez, L., Jaudon, M., Lepage, S., Salachas, F., Bensimon, G., Bizard, C., Doppler, V., Delattre, J. & Meininger, V. (2000). Blood oxidative stress in amyotrophic lateral sclerosis. *Journal of the neurological sciences*, Vol.178, No.1, (September 2000), pp. 57-62, ISSN 0022-510X.
- Borthwick, G. M., Johnson, M. A., Ince, P. G., Shaw, P. J. & Turnbull, D. M. (1999). Mitochondrial enzyme activity in amyotrophic lateral sclerosis: implications for the role of mitochondria in neuronal cell death. *Annals of neurology*, Vol.46, No.5, (November 1999), pp. 787-790, ISSN 0364-5134.
- Breuer, A. C. & Atkinson, M. B. (1988). Fast axonal transport alterations in amyotrophic lateral sclerosis (ALS) and in parathyroid hormone (PTH)-treated axons. *Cell motility and the cytoskeleton*, Vol.10, No.1-2, pp. 321-330, ISSN 0886-1544.
- Breuer, A. C., Lynn, M. P., Atkinson, M. B., Chou, S. M., Wilbourn, A. J., Marks, K. E., Culver, J. E. & Fleegler, E. J. (1987). Fast axonal transport in amyotrophic lateral

- sclerosis: an intra-axonal organelle traffic analysis. *Neurology*, Vol.37, No.5, (May 1987), pp. 738-748, ISSN 0028-3878.
- Brunet, N., Tarabal, O., Esquerda, J. E. & Caldero, J. (2009). Excitotoxic motoneuron degeneration induced by glutamate receptor agonists and mitochondrial toxins in organotypic cultures of chick embryo spinal cord. *The Journal of comparative neurology*, Vol.516, No.4, (October 2009), pp. 277-290, ISSN 1096-9861 (Electronic), 0021-9967 (Linking).
- Burnashev, N., Monyer, H., Seeburg, P. H. & Sakmann, B. (1992). Divalent ion permeability of AMPA receptor channels is dominated by the edited form of a single subunit. *Neuron*, Vol.8, No.1, (January 1992), pp. 189-198, ISSN 0896-6273.
- Carriedo, S. G., Yin, H. Z., Sensi, S. L. & Weiss, J. H. (1998). Rapid Ca<sup>2+</sup> entry through Ca<sup>2+</sup>-permeable AMPA/Kainate channels triggers marked intracellular Ca<sup>2+</sup> rises and consequent oxygen radical production. *J Neurosci*, Vol.18, No.19, (October 1998), pp. 7727-7738, ISSN 0270-6474.
- Carriedo, S. G., Sensi, S. L., Yin, H. Z. & Weiss, J. H. (2000). AMPA exposures induce mitochondrial Ca(2+) overload and ROS generation in spinal motor neurons in vitro. *J Neurosci*, Vol.20, No.1, (January 2000), pp. 240-250, ISSN 1529-2401 (Electronic), 0270-6474 (Linking).
- Casoni, F., Basso, M., Massignan, T., Gianazza, E., Cheroni, C., Salmona, M., Bendotti, C. & Bonetto, V. (2005). Protein nitration in a mouse model of familial amyotrophic lateral sclerosis: possible multifunctional role in the pathogenesis. *The Journal of biological chemistry*, Vol.280, No.16, (April 2005), pp. 16295-16304, ISSN 0021-9258.
- Cassina, P., Cassina, A., Pehar, M., Castellanos, R., Gandelman, M., de Leon, A., Robinson, K. M., Mason, R. P., Beckman, J. S., Barbeito, L. & Radi, R. (2008). Mitochondrial dysfunction in SOD1G93A-bearing astrocytes promotes motor neuron degeneration: prevention by mitochondrial-targeted antioxidants. *J Neurosci*, Vol.28, No.16, (April 2008), pp. 4115-4122, ISSN 1529-2401 (Electronic), 0270-6474 (Linking).
- Celio, M. R. (1990). Calbindin D-28k and parvalbumin in the rat nervous system. *Neuroscience*, Vol.35, No.2, pp. 375-475, ISSN 0306-4522.
- Chancellor, A. M. & Warlow, C. P. (1992). Adult onset motor neuron disease: worldwide mortality, incidence and distribution since 1950. *Journal of neurology, neurosurgery, and psychiatry*, Vol.55, No.12, (December 1992), pp. 1106-1115, ISSN 0022-3050 (Print), 0022-3050 (Linking).
- Clement, A. M., Nguyen, M. D., Roberts, E. A., Garcia, M. L., Boillee, S., Rule, M., McMahon, A. P., Doucette, W., Siwek, D., Ferrante, R. J., Brown, R. H., Jr., Julien, J. P., Goldstein, L. S. & Cleveland, D. W. (2003). Wild-type nonneuronal cells extend survival of SOD1 mutant motor neurons in ALS mice. *Science (New York, N.Y.)*, Vol.302, No.5642, (October 2003), pp. 113-117, ISSN 1095-9203 (Electronic), 0036-8075 (Linking).
- Collard, J. F., Cote, F. & Julien, J. P. (1995). Defective axonal transport in a transgenic mouse model of amyotrophic lateral sclerosis. *Nature*, Vol.375, No.6526, (May 1995), pp. 61-64, ISSN 0028-0836.



- Comi, G. P., Bordoni, A., Salani, S., Franceschina, L., Sciacco, M., Prella, A., Fortunato, F., Zeviani, M., Napoli, L., Bresolin, N., Moggio, M., Ausenda, C. D., Taanman, J. W. & Scarlato, G. (1998). Cytochrome c oxidase subunit I microdeletion in a patient with motor neuron disease. *Annals of neurology*, Vol.43, No.1, (January 1998), pp. 110-116, ISSN 0364-5134.
- Corona, J. C. & Tapia, R. (2004). AMPA receptor activation, but not the accumulation of endogenous extracellular glutamate, induces paralysis and motor neuron death in rat spinal cord in vivo. *Journal of neurochemistry*, Vol.89, No.4, (May 2004), pp. 988-997, ISSN 0022-3042.
- Corona, J. C. & Tapia, R. (2007). Ca<sup>2+</sup>-permeable AMPA receptors and intracellular Ca<sup>2+</sup> determine motoneuron vulnerability in rat spinal cord in vivo. *Neuropharmacology*, Vol.52, No.5, (April 2007), pp. 1219-1228, ISSN 0028-3908.
- Crompton, M. & Heid, I. (1978). The cycling of calcium, sodium, and protons across the inner membrane of cardiac mitochondria. *European journal of biochemistry / FEBS*, Vol.91, No.2, (November 1978), pp. 599-608, ISSN 0014-2956.
- Crugnola, V., Lamperti, C., Lucchini, V., Ronchi, D., Peverelli, L., Prella, A., Sciacco, M., Bordoni, A., Fassone, E., Fortunato, F., Corti, S., Silani, V., Bresolin, N., Di Mauro, S., Comi, G. P. & Moggio, M. (2010). Mitochondrial respiratory chain dysfunction in muscle from patients with amyotrophic lateral sclerosis. *Archives of neurology*, Vol.67, No.7, (July 2010), pp. 849-854, ISSN 1538-3687 (Electronic), 0003-9942 (Linking).
- De Vos, K. J., Chapman, A. L., Tennant, M. E., Manser, C., Tudor, E. L., Lau, K. F., Brownlees, J., Ackerley, S., Shaw, P. J., McLoughlin, D. M., Shaw, C. E., Leigh, P. N., Miller, C. C. & Grierson, A. J. (2007). Familial amyotrophic lateral sclerosis-linked SOD1 mutants perturb fast axonal transport to reduce axonal mitochondria content. *Human molecular genetics*, Vol.16, No.22, (November 2007), pp. 2720-2728, ISSN 0964-6906 (Print), 0964-6906 (Linking).
- Dugan, L. L., Sensi, S. L., Canzoniero, L. M., Handran, S. D., Rothman, S. M., Lin, T. S., Goldberg, M. P. & Choi, D. W. (1995). Mitochondrial production of reactive oxygen species in cortical neurons following exposure to N-methyl-D-aspartate. *J Neurosci*, Vol.15, No.10, (October 1995), pp. 6377-6388, ISSN 0270-6474.
- Dykens, J. A. (1994). Isolated cerebral and cerebellar mitochondria produce free radicals when exposed to elevated CA<sup>2+</sup> and Na<sup>+</sup>: implications for neurodegeneration. *Journal of neurochemistry*, Vol.63, No.2, (August 1994), pp. 584-591, ISSN 0022-3042.
- Echaniz-Laguna, A., Zoll, J., Ponsot, E., N'Guessan, B., Tranchant, C., Loeffler, J. P. & Lampert, E. (2006). Muscular mitochondrial function in amyotrophic lateral sclerosis is progressively altered as the disease develops: a temporal study in man. *Experimental neurology*, Vol.198, No.1, (March 2006), pp. 25-30, ISSN 0014-4886.
- Ferrante, R. J., Shinobu, L. A., Schulz, J. B., Matthews, R. T., Thomas, C. E., Kowall, N. W., Gurney, M. E. & Beal, M. F. (1997a). Increased 3-nitrotyrosine and oxidative damage in mice with a human copper/zinc superoxide dismutase mutation. *Annals of neurology*, Vol.42, No.3, (September 1997), pp. 326-334, ISSN 0364-5134.
- Ferrante, R. J., Browne, S. E., Shinobu, L. A., Bowling, A. C., Baik, M. J., MacGarvey, U., Kowall, N. W., Brown, R. H., Jr. & Beal, M. F. (1997b). Evidence of increased

- oxidative damage in both sporadic and familial amyotrophic lateral sclerosis. *Journal of neurochemistry*, Vol.69, No.5, (November 1997), pp. 2064-2074, ISSN 0022-3042.
- Fiala, M., Chattopadhyay, M., La Cava, A., Tse, E., Liu, G., Lourenco, E., Eskin, A., Liu, P. T., Magpantay, L., Tse, S., Mahanian, M., Weitzman, R., Tong, J., Nguyen, C., Cho, T., Koo, P., Sayre, J., Martinez-Maza, O., Rosenthal, M. J. & Wiedau-Pazos, M. (2010). IL-17A is increased in the serum and in spinal cord CD8 and mast cells of ALS patients. *Journal of neuroinflammation*, Vol.7, pp. 76, ISSN 1742-2094.
- Finsterer, J. (2002). Mitochondriopathy as a differential diagnosis of amyotrophic lateral sclerosis. *Amyotroph Lateral Scler Other Motor Neuron Disord*, Vol.3, No.4, (December 2002), pp. 219-224, ISSN 1466-0822.
- Finsterer, J. (2003). Mitochondriopathy mimicking amyotrophic lateral sclerosis. *The neurologist*, Vol.9, No.1, (January 2003), pp. 45-48, ISSN 1074-7931.
- Fitzmaurice, P. S., Shaw, I. C., Kleiner, H. E., Miller, R. T., Monks, T. J., Lau, S. S., Mitchell, J. D. & Lynch, P. G. (1996). Evidence for DNA damage in amyotrophic lateral sclerosis. *Muscle & nerve*, Vol.19, No.6, (June 1996), pp. 797-798, ISSN 0148-639X.
- Greene, J. G. & Greenamyre, J. T. (1996). Bioenergetics and glutamate excitotoxicity. *Progress in neurobiology*, Vol.48, No.6, (April 1996), pp. 613-634, ISSN 0301-0082.
- Grosskreutz, J., Van Den Bosch, L. & Keller, B. U. (2010). Calcium dysregulation in amyotrophic lateral sclerosis. *Cell calcium*, Vol.47, No.2, (February 2010), pp. 165-174, ISSN 1532-1991 (Electronic), 0143-4160 (Linking).
- Grosskreutz, J., Haastert, K., Dewil, M., Van Damme, P., Callewaert, G., Robberecht, W., Dengler, R. & Van Den Bosch, L. (2007). Role of mitochondria in kainate-induced fast Ca<sup>2+</sup> transients in cultured spinal motor neurons. *Cell calcium*, Vol.42, No.1, (July 2007), pp. 59-69, ISSN 0143-4160.
- Hall, E. D., Oostveen, J. A. & Gurney, M. E. (1998). Relationship of microglial and astrocytic activation to disease onset and progression in a transgenic model of familial ALS. *Glia*, Vol.23, No.3, (July 1998), pp. 249-256, ISSN 0894-1491.
- Henkel, J. S., Engelhardt, J. I., Siklos, L., Simpson, E. P., Kim, S. H., Pan, T., Goodman, J. C., Siddique, T., Beers, D. R. & Appel, S. H. (2004). Presence of dendritic cells, MCP-1, and activated microglia/macrophages in amyotrophic lateral sclerosis spinal cord tissue. *Annals of neurology*, Vol.55, No.2, (February 2004), pp. 221-235, ISSN 0364-5134.
- Higgins, C. M., Jung, C., Ding, H. & Xu, Z. (2002). Mutant Cu, Zn superoxide dismutase that causes motoneuron degeneration is present in mitochondria in the CNS. *J Neurosci*, Vol.22, No.6, (March 2002), pp. RC215, ISSN 1529-2401 (Electronic), 0270-6474 (Linking).
- Hirano, A., Donnenfeld, H., Sasaki, S. & Nakano, I. (1984a). Fine structural observations of neurofilamentous changes in amyotrophic lateral sclerosis. *Journal of neuropathology and experimental neurology*, Vol.43, No.5, (September 1984), pp. 461-470, ISSN 0022-3069.
- Hirano, A., Nakano, I., Kurland, L. T., Mulder, D. W., Holley, P. W. & Saccomanno, G. (1984b). Fine structural study of neurofibrillary changes in a family with

- amyotrophic lateral sclerosis. *Journal of neuropathology and experimental neurology*, Vol.43, No.5, (September 1984), pp. 471-480, ISSN 0022-3069.
- Hollmann, M., Hartley, M. & Heinemann, S. (1991). Ca<sup>2+</sup> permeability of KA-AMPA--gated glutamate receptor channels depends on subunit composition. *Science (New York, N.Y.)*, Vol.252, No.5007, (May 1991), pp. 851-853, ISSN 0036-8075.
- Huisman, M. H., de Jong, S. W., van Doormaal, P. T., Weinreich, S. S., Schelhaas, H. J., van der Kooi, A. J., de Visser, M., Veldink, J. H. & van den Berg, L. H. (2011). Population based epidemiology of amyotrophic lateral sclerosis using capture-recapture methodology. *Journal of neurology, neurosurgery, and psychiatry*, (May 2011), pp., ISSN 1468-330X (Electronic), 0022-3050 (Linking).
- Hume, R. I., Dingledine, R. & Heinemann, S. F. (1991). Identification of a site in glutamate receptor subunits that controls calcium permeability. *Science (New York, N.Y.)*, Vol.253, No.5023, (August 1991), pp. 1028-1031, ISSN 0036-8075.
- Ihara, Y., Nobukuni, K., Takata, H. & Hayabara, T. (2005). Oxidative stress and metal content in blood and cerebrospinal fluid of amyotrophic lateral sclerosis patients with and without a Cu, Zn-superoxide dismutase mutation. *Neurological research*, Vol.27, No.1, (January 2005), pp. 105-108, ISSN 0161-6412.
- Ilzecka, J. (2007). Decreased cerebrospinal fluid cytochrome c levels in patients with amyotrophic lateral sclerosis. *Scandinavian journal of clinical and laboratory investigation*, Vol.67, No.3, pp. 264-269, ISSN 0036-5513.
- Ilzecka, J. (2011). Granzymes A and B levels in serum of patients with amyotrophic lateral sclerosis. *Clinical biochemistry*, Vol.44, No.8-9, (June 2011), pp. 650-653, ISSN 1873-2933 (Electronic), 0009-9120 (Linking).
- Ince, P., Stout, N., Shaw, P., Slade, J., Hunziker, W., Heizmann, C. W. & Baimbridge, K. G. (1993). Parvalbumin and calbindin D-28k in the human motor system and in motor neuron disease. *Neuropathology and applied neurobiology*, Vol.19, No.4, (August 1993), pp. 291-299, ISSN 0305-1846.
- Jaarsma, D., Rognoni, F., van Duijn, W., Verspaget, H. W., Haasdijk, E. D. & Holstege, J. C. (2001). CuZn superoxide dismutase (SOD1) accumulates in vacuolated mitochondria in transgenic mice expressing amyotrophic lateral sclerosis-linked SOD1 mutations. *Acta neuropathologica*, Vol.102, No.4, (October 2001), pp. 293-305, ISSN 0001-6322.
- Jabaudon, D., Scanziani, M., Gahwiler, B. H. & Gerber, U. (2000). Acute decrease in net glutamate uptake during energy deprivation. *Proceedings of the National Academy of Sciences of the United States of America*, Vol.97, No.10, (May 2000), pp. 5610-5615, ISSN 0027-8424.
- Julien, J. P. & Mushynski, W. E. (1998). Neurofilaments in health and disease. *Progress in nucleic acid research and molecular biology*, Vol.61, pp. 1-23, ISSN 0079-6603.
- Jung, C., Higgins, C. M. & Xu, Z. (2002). Mitochondrial electron transport chain complex dysfunction in a transgenic mouse model for amyotrophic lateral sclerosis. *Journal of neurochemistry*, Vol.83, No.3, (November 2002), pp. 535-545, ISSN 0022-3042.
- Kaal, E. C., Vlug, A. S., Versleijen, M. W., Kuilman, M., Joosten, E. A. & Bar, P. R. (2000). Chronic mitochondrial inhibition induces selective motoneuron death in vitro: a

- new model for amyotrophic lateral sclerosis. *Journal of neurochemistry*, Vol.74, No.3, (March 2000), pp. 1158-1165, ISSN 0022-3042.
- Kawamata, T., Akiyama, H., Yamada, T. & McGeer, P. L. (1992). Immunologic reactions in amyotrophic lateral sclerosis brain and spinal cord tissue. *The American journal of pathology*, Vol.140, No.3, (March 1992), pp. 691-707, ISSN 0002-9440.
- Keller, A. F., Gravel, M. & Kriz, J. (2010). Treatment with minocycline after disease onset alters astrocyte reactivity and increases microgliosis in SOD1 mutant mice. *Experimental neurology*, Vol.228, No.1, (March 2010), pp. 69-79, ISSN 1090-2430 (Electronic), 0014-4886 (Linking).
- Kirkinetzos, I. G., Bacman, S. R., Hernandez, D., Oca-Cossio, J., Arias, L. J., Perez-Pinzon, M. A., Bradley, W. G. & Moraes, C. T. (2005). Cytochrome c association with the inner mitochondrial membrane is impaired in the CNS of G93A-SOD1 mice. *J Neurosci*, Vol.25, No.1, (January 2005), pp. 164-172, ISSN 1529-2401 (Electronic), 0270-6474 (Linking).
- Komatsu, M., Wang, Q. J., Holstein, G. R., Friedrich, V. L., Jr., Iwata, J., Kominami, E., Chait, B. T., Tanaka, K. & Yue, Z. (2007). Essential role for autophagy protein Atg7 in the maintenance of axonal homeostasis and the prevention of axonal degeneration. *Proceedings of the National Academy of Sciences of the United States of America*, Vol.104, No.36, (September 2007), pp. 14489-14494, ISSN 0027-8424.
- Kong, J. & Xu, Z. (1998). Massive mitochondrial degeneration in motor neurons triggers the onset of amyotrophic lateral sclerosis in mice expressing a mutant SOD1. *J Neurosci*, Vol.18, No.9, (May 1), pp. 3241-3250, ISSN 0270-6474.
- Kriz, J., Nguyen, M. D. & Julien, J. P. (2002). Minocycline slows disease progression in a mouse model of amyotrophic lateral sclerosis. *Neurobiology of disease*, Vol.10, No.3, (August 2002), pp. 268-278, ISSN 0969-9961.
- Kroemer, G., Galluzzi, L., Vandenabeele, P., Abrams, J., Alnemri, E. S., Baehrecke, E. H., Blagosklonny, M. V., El-Deiry, W. S., Golstein, P., Green, D. R., Hengartner, M., Knight, R. A., Kumar, S., Lipton, S. A., Malorni, W., Nunez, G., Peter, M. E., Tschopp, J., Yuan, J., Piacentini, M., Zhivotovsky, B. & Melino, G. (2009). Classification of cell death: recommendations of the Nomenclature Committee on Cell Death 2009. *Cell death and differentiation*, Vol.16, No.1, (January 2009), pp. 3-11, ISSN 1476-5403 (Electronic), 1350-9047 (Linking).
- Lenaz, G., Bovina, C., D'Aurelio, M., Fato, R., Formiggini, G., Genova, M. L., Giuliano, G., Merlo Pich, M., Paolucci, U., Parenti Castelli, G. & Ventura, B. (2002). Role of mitochondria in oxidative stress and aging. *Annals of the New York Academy of Sciences*, Vol.959, (April 2002), pp. 199-213, ISSN 0077-8923.
- Lepore, A. C., Dejea, C., Carmen, J., Rauck, B., Kerr, D. A., Sofroniew, M. V. & Maragakis, N. J. (2008). Selective ablation of proliferating astrocytes does not affect disease outcome in either acute or chronic models of motor neuron degeneration. *Experimental neurology*, Vol.211, No.2, (June 2008), pp. 423-432, ISSN 1090-2430 (Electronic), 0014-4886 (Linking).
- Li, M., Ona, V. O., Guegan, C., Chen, M., Jackson-Lewis, V., Andrews, L. J., Olszewski, A. J., Stieg, P. E., Lee, J. P., Przedborski, S. & Friedlander, R. M. (2000). Functional role of

- caspase-1 and caspase-3 in an ALS transgenic mouse model. *Science (New York, N.Y.)*, Vol.288, No.5464, (April 2000), pp. 335-339, ISSN 0036-8075.
- Ligon, L. A., LaMonte, B. H., Wallace, K. E., Weber, N., Kalb, R. G. & Holzbaur, E. L. (2005). Mutant superoxide dismutase disrupts cytoplasmic dynein in motor neurons. *Neuroreport*, Vol.16, No.6, (April 2005), pp. 533-536, ISSN 0959-4965.
- Lin, J., Diamanduros, A., Chowdhury, S. A., Scelsa, S., Latov, N. & Sadiq, S. A. (2009). Specific electron transport chain abnormalities in amyotrophic lateral sclerosis. *Journal of neurology*, Vol.256, No.5, (May 2009), pp. 774-782, ISSN 1432-1459 (Electronic), 0340-5354 (Linking).
- Liu, D., Wen, J., Liu, J. & Li, L. (1999). The roles of free radicals in amyotrophic lateral sclerosis: reactive oxygen species and elevated oxidation of protein, DNA, and membrane phospholipids. *Faseb J*, Vol.13, No.15, (December 1999), pp. 2318-2328, ISSN 0892-6638.
- Liu, J., Lillo, C., Jonsson, P. A., Vande Velde, C., Ward, C. M., Miller, T. M., Subramaniam, J. R., Rothstein, J. D., Marklund, S., Andersen, P. M., Brannstrom, T., Gredal, O., Wong, P. C., Williams, D. S. & Cleveland, D. W. (2004). Toxicity of familial ALS-linked SOD1 mutants from selective recruitment to spinal mitochondria. *Neuron*, Vol.43, No.1, (July 2004), pp. 5-17, ISSN 0896-6273.
- Liu, R., Althaus, J. S., Ellerbrock, B. R., Becker, D. A. & Gurney, M. E. (1998). Enhanced oxygen radical production in a transgenic mouse model of familial amyotrophic lateral sclerosis. *Annals of neurology*, Vol.44, No.5, (November 1998), pp. 763-770, ISSN 0364-5134.
- Locatelli, F., Corti, S., Papadimitriou, D., Fortunato, F., Del Bo, R., Donadoni, C., Nizzardo, M., Nardini, M., Salani, S., Ghezzi, S., Strazzer, S., Bresolin, N. & Comi, G. P. (2007). Fas small interfering RNA reduces motoneuron death in amyotrophic lateral sclerosis mice. *Annals of neurology*, Vol.62, No.1, (July 2007), pp. 81-92, ISSN 0364-5134.
- Longuemare, M. C. & Swanson, R. A. (1995). Excitatory amino acid release from astrocytes during energy failure by reversal of sodium-dependent uptake. *Journal of neuroscience research*, Vol.40, No.3, (February 1995), pp. 379-386, ISSN 0360-4012.
- Manfredi, G. & Xu, Z. (2005). Mitochondrial dysfunction and its role in motor neuron degeneration in ALS. *Mitochondrion*, Vol.5, No.2, (April 2005), pp. 77-87, ISSN 1567-7249.
- Martin, L. J. (2010). Mitochondrial and Cell Death Mechanisms in Neurodegenerative Diseases. *Pharmaceuticals (Basel, Switzerland)*, Vol.3, No.4, pp. 839-915, ISSN 1424-8247.
- Martin, L. J., Gertz, B., Pan, Y., Price, A. C., Molkentin, J. D. & Chang, Q. (2009). The mitochondrial permeability transition pore in motor neurons: involvement in the pathobiology of ALS mice. *Experimental neurology*, Vol.218, No.2, (August 2009), pp. 333-346, ISSN 1090-2430 (Electronic), 0014-4886 (Linking).
- Mattiazzi, M., D'Aurelio, M., Gajewski, C. D., Martushova, K., Kiaei, M., Beal, M. F. & Manfredi, G. (2002). Mutated human SOD1 causes dysfunction of oxidative phosphorylation in mitochondria of transgenic mice. *The Journal of biological chemistry*, Vol.277, No.33, (August, 2002), pp. 29626-29633, ISSN 0021-9258.

- Maus, M., Marin, P., Israel, M., Glowinski, J. & Premont, J. (1999). Pyruvate and lactate protect striatal neurons against N-methyl-D-aspartate-induced neurotoxicity. *The European journal of neuroscience*, Vol.11, No.9, (September 1999), pp. 3215-3224, ISSN 0953-816X.
- McGeer, P. L., McGeer, E. G., Kawamata, T., Yamada, T. & Akiyama, H. (1991). Reactions of the immune system in chronic degenerative neurological diseases. *The Canadian journal of neurological sciences*, Vol.18, No.3 Suppl, (August 1991), pp. 376-379, ISSN 0317-1671.
- Menzies, F. M., Ince, P. G. & Shaw, P. J. (2002a). Mitochondrial involvement in amyotrophic lateral sclerosis. *Neurochemistry international*, Vol.40, No.6, (May 2002), pp. 543-551, ISSN 0197-0186.
- Menzies, F. M., Cookson, M. R., Taylor, R. W., Turnbull, D. M., Chrzanowska-Lightowlers, Z. M., Dong, L., Figlewicz, D. A. & Shaw, P. J. (2002b). Mitochondrial dysfunction in a cell culture model of familial amyotrophic lateral sclerosis. *Brain*, Vol.125, No.Pt 7, (July 2002), pp. 1522-1533, ISSN 0006-8950.
- Monje, M. L., Phillips, R. & Sapolsky, R. (2001). Calbindin overexpression buffers hippocampal cultures from the energetic impairments caused by glutamate. *Brain research*, Vol.911, No.1, (August 2001), pp. 37-42, ISSN 0006-8993.
- Moreau, C., Devos, D., Brunaud-Danel, V., Defebvre, L., Perez, T., Destee, A., Tonnel, A. B., Lassalle, P. & Just, N. (2005). Elevated IL-6 and TNF-alpha levels in patients with ALS: inflammation or hypoxia? *Neurology*, Vol.65, No.12, (December 2005), pp. 1958-1960, ISSN 1526-632X (Electronic), 0028-3878 (Linking).
- Nakano, Y., Hirayama, K. & Terao, K. (1987). Hepatic ultrastructural changes and liver dysfunction in amyotrophic lateral sclerosis. *Archives of neurology*, Vol.44, No.1, (January 1987), pp. 103-106, ISSN 0003-9942.
- Neymotin, A., Petri, S., Calingasan, N. Y., Wille, E., Schafer, P., Stewart, C., Hensley, K., Beal, M. F. & Kiaei, M. (2009). Lenalidomide (Revlimid) administration at symptom onset is neuroprotective in a mouse model of amyotrophic lateral sclerosis. *Experimental neurology*, Vol.220, No.1, (November 2009), pp. 191-197, ISSN 1090-2430 (Electronic), 0014-4886 (Linking).
- Nicholls, D. G. (1978). The regulation of extramitochondrial free calcium ion concentration by rat liver mitochondria. *Biochem J*, Vol.176, No.2, (November 1978), pp. 463-474, ISSN 0264-6021.
- Nicholls, D. G. (1985). A role for the mitochondrion in the protection of cells against calcium overload? *Progress in brain research*, Vol.63, pp. 97-106, ISSN 0079-6123.
- Nicholls, D. G. & Budd, S. L. (2000). Mitochondria and neuronal survival. *Physiological reviews*, Vol.80, No.1, (January 2000), pp. 315-360, ISSN 0031-9333.
- Nicholls, D. G., Vesce, S., Kirk, L. & Chalmers, S. (2003). Interactions between mitochondrial bioenergetics and cytoplasmic calcium in cultured cerebellar granule cells. *Cell calcium*, Vol.34, No.4-5, (October-November 2003), pp. 407-424, ISSN 0143-4160.
- Novelli, A., Reilly, J. A., Lysko, P. G. & Henneberry, R. C. (1988). Glutamate becomes neurotoxic via the N-methyl-D-aspartate receptor when intracellular energy levels are reduced. *Brain research*, Vol.451, No.1-2, (June 1988), pp. 205-212, ISSN 0006-8993.

- Ohta, Y., Kamiya, T., Nagai, M., Nagata, T., Morimoto, N., Miyazaki, K., Murakami, T., Kurata, T., Takehisa, Y., Ikeda, Y., Asoh, S., Ohta, S. & Abe, K. (2008). Therapeutic benefits of intrathecal protein therapy in a mouse model of amyotrophic lateral sclerosis. *Journal of neuroscience research*, Vol.86, No.13, (October 2008), pp. 3028-3037, ISSN 1097-4547 (Electronic), 0360-4012 (Linking).
- Oteiza, P. I., Uchitel, O. D., Carrasquedo, F., Dubrovski, A. L., Roma, J. C. & Fraga, C. G. (1997). Evaluation of antioxidants, protein, and lipid oxidation products in blood from sporadic amyotrophic lateral sclerosis patients. *Neurochemical research*, Vol.22, No.4, (April 1997), pp. 535-539, ISSN 0364-3190.
- Palecek, J., Lips, M. B. & Keller, B. U. (1999). Calcium dynamics and buffering in motoneurons of the mouse spinal cord. *The Journal of physiology*, Vol.520 Pt 2, (October 1999), pp. 485-502, ISSN 0022-3751.
- Pasinelli, P., Houseweart, M. K., Brown, R. H., Jr. & Cleveland, D. W. (2000). Caspase-1 and -3 are sequentially activated in motor neuron death in Cu,Zn superoxide dismutase-mediated familial amyotrophic lateral sclerosis. *Proceedings of the National Academy of Sciences of the United States of America*, Vol.97, No.25, (December 2000), pp. 13901-13906, ISSN 0027-8424.
- Pasinelli, P., Belford, M. E., Lennon, N., Bacsikai, B. J., Hyman, B. T., Trotti, D. & Brown, R. H., Jr. (2004). Amyotrophic lateral sclerosis-associated SOD1 mutant proteins bind and aggregate with Bcl-2 in spinal cord mitochondria. *Neuron*, Vol.43, No.1, (July 2004), pp. 19-30, ISSN 0896-6273.
- Peng, T. I. & Jou, M. J. (2010). Oxidative stress caused by mitochondrial calcium overload. *Annals of the New York Academy of Sciences*, Vol.1201, (July 2010), pp. 183-188, ISSN 1749-6632 (Electronic), 0077-8923 (Linking).
- Perlson, E., Jeong, G. B., Ross, J. L., Dixit, R., Wallace, K. E., Kalb, R. G. & Holzbaur, E. L. (2009). A switch in retrograde signaling from survival to stress in rapid-onset neurodegeneration. *J Neurosci*, Vol.29, No.31, (August 2009), pp. 9903-9917, ISSN 1529-2401 (Electronic), 0270-6474 (Linking).
- Petri, S., Kiaei, M., Wille, E., Calingasan, N. Y. & Flint Beal, M. (2006). Loss of Fas ligand-function improves survival in G93A-transgenic ALS mice. *Journal of the neurological sciences*, Vol.251, No.1-2, (December 2006), pp. 44-49, ISSN 0022-510X.
- Poon, H. F., Hensley, K., Thongboonkerd, V., Merchant, M. L., Lynn, B. C., Pierce, W. M., Klein, J. B., Calabrese, V. & Butterfield, D. A. (2005). Redox proteomics analysis of oxidatively modified proteins in G93A-SOD1 transgenic mice--a model of familial amyotrophic lateral sclerosis. *Free radical biology & medicine*, Vol.39, No.4, (August 2005), pp. 453-462, ISSN 0891-5849.
- Pun, S., Santos, A. F., Saxena, S., Xu, L. & Caroni, P. (2006). Selective vulnerability and pruning of phasic motoneuron axons in motoneuron disease alleviated by CNTF. *Nature neuroscience*, Vol.9, No.3, (March 2006), pp. 408-419, ISSN 1097-6256.
- Rao, S. D., Yin, H. Z. & Weiss, J. H. (2003). Disruption of glial glutamate transport by reactive oxygen species produced in motor neurons. *J Neurosci*, Vol.23, No.7, (April 2003), pp. 2627-2633, ISSN 1529-2401 (Electronic), 0270-6474 (Linking).
- Raoul, C., Buhler, E., Sadeghi, C., Jacquier, A., Aebischer, P., Pettmann, B., Henderson, C. E. & Haase, G. (2006). Chronic activation in presymptomatic amyotrophic lateral

- sclerosis (ALS) mice of a feedback loop involving Fas, Daxx, and FasL. *Proceedings of the National Academy of Sciences of the United States of America*, Vol.103, No.15, (April 2006), pp. 6007-6012, ISSN 0027-8424.
- Rentzos, M., Rombos, A., Nikolaou, C., Zoga, M., Zouvelou, V., Dimitrakopoulos, A., Alexakis, T., Tsoutsou, A., Samakovli, A., Michalopoulou, M. & Evdokimidis, I. (2010a). Interleukin-15 and interleukin-12 are elevated in serum and cerebrospinal fluid of patients with amyotrophic lateral sclerosis. *European neurology*, Vol.63, No.5, pp. 285-290, ISSN 1421-9913 (Electronic), 0014-3022 (Linking).
- Rentzos, M., Rombos, A., Nikolaou, C., Zoga, M., Zouvelou, V., Dimitrakopoulos, A., Alexakis, T., Tsoutsou, A., Samakovli, A., Michalopoulou, M. & Evdokimidis, J. (2010b). Interleukin-17 and interleukin-23 are elevated in serum and cerebrospinal fluid of patients with ALS: a reflection of Th17 cells activation? *Acta neurologica Scandinavica*, Vol.122, No.6, (December 2010), pp. 425-429, ISSN 1600-0404 (Electronic), 0001-6314 (Linking).
- Richter, C., Park, J. W. & Ames, B. N. (1988). Normal oxidative damage to mitochondrial and nuclear DNA is extensive. *Proceedings of the National Academy of Sciences of the United States of America*, Vol.85, No.17, (September 1988), pp. 6465-6467, ISSN 0027-8424.
- Rosen, D. R., Siddique, T., Patterson, D., Figlewicz, D. A., Sapp, P., Hentati, A., Donaldson, D., Goto, J., O'Regan, J. P., Deng, H. X. & et al. (1993). Mutations in Cu/Zn superoxide dismutase gene are associated with familial amyotrophic lateral sclerosis. *Nature*, Vol.362, No.6415, (March 1993), pp. 59-62, ISSN 0028-0836.
- Rothstein, J. D., Martin, L. J. & Kuncl, R. W. (1992). Decreased glutamate transport by the brain and spinal cord in amyotrophic lateral sclerosis. *The New England journal of medicine*, Vol.326, No.22, (May 1992), pp. 1464-1468, ISSN 0028-4793.
- Rothstein, J. D., Van Kammen, M., Levey, A. I., Martin, L. J. & Kuncl, R. W. (1995). Selective loss of glial glutamate transporter GLT-1 in amyotrophic lateral sclerosis. *Annals of neurology*, Vol.38, No.1, (July 1995), pp. 73-84, ISSN 0364-5134.
- Rowland, L. P. & Shneider, N. A. (2001). Amyotrophic lateral sclerosis. *The New England journal of medicine*, Vol.344, No.22, (May 2001), pp. 1688-1700, ISSN 0028-4793.
- Ryberg, H., Soderling, A. S., Davidsson, P., Blennow, K., Caidahl, K. & Persson, L. I. (2004). Cerebrospinal fluid levels of free 3-nitrotyrosine are not elevated in the majority of patients with amyotrophic lateral sclerosis or Alzheimer's disease. *Neurochemistry international*, Vol.45, No.1, (July 2004), pp. 57-62, ISSN 0197-0186.
- Sanagi, T., Yuasa, S., Nakamura, Y., Suzuki, E., Aoki, M., Warita, H., Itoyama, Y., Uchino, S., Kohsaka, S. & Ohsawa, K. (2010). Appearance of phagocytic microglia adjacent to motoneurons in spinal cord tissue from a presymptomatic transgenic rat model of amyotrophic lateral sclerosis. *Journal of neuroscience research*, Vol.88, No.12, (September 2010), pp. 2736-2746, ISSN 1097-4547 (Electronic), 0360-4012 (Linking).
- Sargsyan, S. A., Monk, P. N. & Shaw, P. J. (2005). Microglia as potential contributors to motor neuron injury in amyotrophic lateral sclerosis. *Glia*, Vol.51, No.4, (September 2005), pp. 241-253, ISSN 0894-1491.
- Sasaki, S. & Iwata, M. (1996). Impairment of fast axonal transport in the proximal axons of anterior horn neurons in amyotrophic lateral sclerosis. *Neurology*, Vol.47, No.2, (August 1996), pp. 535-540, ISSN 0028-3878.

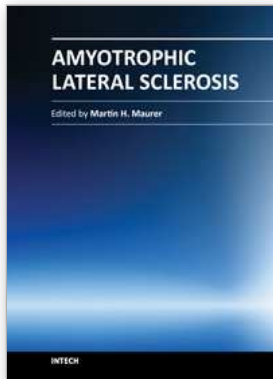


- Saxena, K., Henry, T. R., Solem, L. E. & Wallace, K. B. (1995). Enhanced induction of the mitochondrial permeability transition following acute menadione administration. *Archives of biochemistry and biophysics*, Vol.317, No.1, (February 1995), pp. 79-84, ISSN 0003-9861.
- Scott, I. D. & Nicholls, D. G. (1980). Energy transduction in intact synaptosomes. Influence of plasma-membrane depolarization on the respiration and membrane potential of internal mitochondria determined in situ. *Biochem J*, Vol.186, No.1, (January 1980), pp. 21-33, ISSN 0264-6021.
- Schinder, A. F., Olson, E. C., Spitzer, N. C. & Montal, M. (1996). Mitochondrial dysfunction is a primary event in glutamate neurotoxicity. *J Neurosci*, Vol.16, No.19, (October 1996), pp. 6125-6133, ISSN 0270-6474.
- Shaw, P. J. (1999). Calcium, glutamate, and amyotrophic lateral sclerosis: more evidence but no certainties. *Annals of neurology*, Vol.46, No.6, (December 1999), pp. 803-805, ISSN 0364-5134.
- Shaw, P. J., Ince, P. G., Falkous, G. & Mantle, D. (1995a). Oxidative damage to protein in sporadic motor neuron disease spinal cord. *Annals of neurology*, Vol.38, No.4, (October 1995), pp. 691-695, ISSN 0364-5134.
- Shaw, P. J., Forrest, V., Ince, P. G., Richardson, J. P. & Wastell, H. J. (1995b). CSF and plasma amino acid levels in motor neuron disease: elevation of CSF glutamate in a subset of patients. *Neurodegeneration*, Vol.4, No.2, (June 1995), pp. 209-216, ISSN 1055-8330.
- Shibata, N., Nagai, R., Uchida, K., Horiuchi, S., Yamada, S., Hirano, A., Kawaguchi, M., Yamamoto, T., Sasaki, S. & Kobayashi, M. (2001). Morphological evidence for lipid peroxidation and protein glycooxidation in spinal cords from sporadic amyotrophic lateral sclerosis patients. *Brain research*, Vol.917, No.1, (October 2001), pp. 97-104, ISSN 0006-8993.
- Shrivastava, M. & Vivekanandhan, S. (2011). An insight into ultrastructural and morphological alterations of platelets in neurodegenerative diseases. *Ultrastructural pathology*, Vol.35, No.3, (May 2011), pp. 110-116, ISSN 1521-0758 (Electronic), 0191-3123 (Linking).
- Shrivastava, M., Das, T. K., Behari, M., Pati, U. & Vivekanandhan, S. (2011a). Ultrastructural variations in platelets and platelet mitochondria: a novel feature in amyotrophic lateral sclerosis. *Ultrastructural pathology*, Vol.35, No.2, (April 2011), pp. 52-59, ISSN 1521-0758 (Electronic), 0191-3123 (Linking).
- Shrivastava, M., Vivekanandhan, S., Pati, U., Behari, M. & Das, T. K. (2011b). Mitochondrial perturbation and execution of apoptosis in platelet mitochondria of patients with amyotrophic lateral sclerosis. *The International journal of neuroscience*, Vol.121, No.3, (March 2011), pp. 149-158, ISSN 1563-5279 (Electronic), 0020-7454 (Linking).
- Siciliano, G., D'Avino, C., Del Corona, A., Barsacchi, R., Kusmic, C., Rocchi, A., Pastorini, E. & Murri, L. (2002). Impaired oxidative metabolism and lipid peroxidation in exercising muscle from ALS patients. *Amyotroph Lateral Scler Other Motor Neuron Disord*, Vol.3, No.2, (June 2002), pp. 57-62, ISSN 1466-0822.
- Siklos, L., Engelhardt, J., Harati, Y., Smith, R. G., Joo, F. & Appel, S. H. (1996). Ultrastructural evidence for altered calcium in motor nerve terminals in amyotrophic lateral

- sclerosis. *Annals of neurology*, Vol.39, No.2, (February 1996), pp. 203-216, ISSN 0364-5134.
- Simpson, E. P., Henry, Y. K., Henkel, J. S., Smith, R. G. & Appel, S. H. (2004). Increased lipid peroxidation in sera of ALS patients: a potential biomarker of disease burden. *Neurology*, Vol.62, No.10, (May 2004), pp. 1758-1765, ISSN 1526-632X (Electronic), 0028-3878 (Linking).
- Smith, R. G., Henry, Y. K., Mattson, M. P. & Appel, S. H. (1998). Presence of 4-hydroxynonenal in cerebrospinal fluid of patients with sporadic amyotrophic lateral sclerosis. *Annals of neurology*, Vol.44, No.4, (October 1998), pp. 696-699, ISSN 0364-5134.
- Sofroniew, M. V. (2005). Reactive astrocytes in neural repair and protection. *Neuroscientist*, Vol.11, No.5, (October 2005), pp. 400-407, ISSN 1073-8584.
- Spreux-Varoquaux, O., Bensimon, G., Lacomblez, L., Salachas, F., Pradat, P. F., Le Forestier, N., Marouan, A., Dib, M. & Meininger, V. (2002). Glutamate levels in cerebrospinal fluid in amyotrophic lateral sclerosis: a reappraisal using a new HPLC method with coulometric detection in a large cohort of patients. *Journal of the neurological sciences*, Vol.193, No.2, (January 2002), pp. 73-78, ISSN 0022-510X.
- Swerdlow, R. H., Parks, J. K., Cassarino, D. S., Trimmer, P. A., Miller, S. W., Maguire, D. J., Sheehan, J. P., Maguire, R. S., Pattee, G., Juel, V. C., Phillips, L. H., Tuttle, J. B., Bennett, J. P., Jr., Davis, R. E. & Parker, W. D., Jr. (1998). Mitochondria in sporadic amyotrophic lateral sclerosis. *Experimental neurology*, Vol.153, No.1, (September 1998), pp. 135-142, ISSN 0014-4886.
- Tateno, M., Kato, S., Sakurai, T., Nukina, N., Takahashi, R. & Araki, T. (2009). Mutant SOD1 impairs axonal transport of choline acetyltransferase and acetylcholine release by sequestering KAP3. *Human molecular genetics*, Vol.18, No.5, (March 2009), pp. 942-955, ISSN 1460-2083 (Electronic), 0964-6906 (Linking).
- Tohgi, H., Abe, T., Yamazaki, K., Murata, T., Ishizaki, E. & Isobe, C. (1999). Remarkable increase in cerebrospinal fluid 3-nitrotyrosine in patients with sporadic amyotrophic lateral sclerosis. *Annals of neurology*, Vol.46, No.1, (July 1999), pp. 129-131, ISSN 0364-5134.
- Tovar-y-Romo, L. B., Zepeda, A. & Tapia, R. (2007). Vascular endothelial growth factor prevents paralysis and motoneuron death in a rat model of excitotoxic spinal cord neurodegeneration. *Journal of neuropathology and experimental neurology*, Vol.66, No.10, (October 2007), pp. 913-922, ISSN 0022-3069.
- Tovar-y-Romo, L. B., Santa-Cruz, L. D. & Tapia, R. (2009a). Experimental models for the study of neurodegeneration in amyotrophic lateral sclerosis. *Molecular neurodegeneration*, Vol.4, pp. 31, ISSN 1750-1326.
- Tovar-y-Romo, L. B., Santa-Cruz, L. D., Zepeda, A. & Tapia, R. (2009b). Chronic elevation of extracellular glutamate due to transport blockade is innocuous for spinal motoneurons in vivo. *Neurochemistry international*, Vol.54, No.3-4, (March-April 2009), pp. 186-191, ISSN 1872-9754 (Electronic), 0197-0186 (Linking).
- Trotti, D., Danbolt, N. C. & Volterra, A. (1998). Glutamate transporters are oxidant-vulnerable: a molecular link between oxidative and excitotoxic neurodegeneration?

- Trends in pharmacological sciences*, Vol.19, No.8, (August 1998), pp. 328-334, ISSN 0165-6147.
- Trotti, D., Rossi, D., Gjesdal, O., Levy, L. M., Racagni, G., Danbolt, N. C. & Volterra, A. (1996). Peroxynitrite inhibits glutamate transporter subtypes. *The Journal of biological chemistry*, Vol.271, No.11, (March 1996), pp. 5976-5979, ISSN 0021-9258.
- Turrens, J. F., Alexandre, A. & Lehninger, A. L. (1985). Ubisemiquinone is the electron donor for superoxide formation by complex III of heart mitochondria. *Archives of biochemistry and biophysics*, Vol.237, No.2, (March 1985), pp. 408-414, ISSN 0003-9861.
- Van Den Bosch, L., Tilkin, P., Lemmens, G. & Robberecht, W. (2002). Minocycline delays disease onset and mortality in a transgenic model of ALS. *Neuroreport*, Vol.13, No.8, (June 2002), pp. 1067-1070, ISSN 0959-4965.
- Vielhaber, S., Kunz, D., Winkler, K., Wiedemann, F. R., Kirches, E., Feistner, H., Heinze, H. J., Elger, C. E., Schubert, W. & Kunz, W. S. (2000). Mitochondrial DNA abnormalities in skeletal muscle of patients with sporadic amyotrophic lateral sclerosis. *Brain*, Vol.123, (July 2000), pp. 1339-1348, ISSN 0006-8950.
- Volterra, A., Trotti, D. & Racagni, G. (1994). Glutamate uptake is inhibited by arachidonic acid and oxygen radicals via two distinct and additive mechanisms. *Molecular pharmacology*, Vol.46, No.5, (November 1994), pp. 986-992, ISSN 0026-895X.
- von Lewinski, F. & Keller, B. U. (2005). Ca<sup>2+</sup>, mitochondria and selective motoneuron vulnerability: implications for ALS. *Trends in neurosciences*, Vol.28, No.9, (September 2005), pp. 494-500, ISSN 0166-2236.
- Warita, H., Itoyama, Y. & Abe, K. (1999). Selective impairment of fast anterograde axonal transport in the peripheral nerves of asymptomatic transgenic mice with a G93A mutant SOD1 gene. *Brain research*, Vol.819, No.1-2, (February 1999), pp. 120-131, ISSN 0006-8993.
- White, R. J. & Reynolds, I. J. (1996). Mitochondrial depolarization in glutamate-stimulated neurons: an early signal specific to excitotoxin exposure. *J Neurosci*, Vol.16, No.18, (September 1996), pp. 5688-5697, ISSN 0270-6474.
- Wiedemann, F. R., Manfredi, G., Mawrin, C., Beal, M. F. & Schon, E. A. (2002). Mitochondrial DNA and respiratory chain function in spinal cords of ALS patients. *Journal of neurochemistry*, Vol.80, No.4, (February 2002), pp. 616-625, ISSN 0022-3042.
- Wiedemann, F. R., Winkler, K., Kuznetsov, A. V., Bartels, C., Vielhaber, S., Feistner, H. & Kunz, W. S. (1998). Impairment of mitochondrial function in skeletal muscle of patients with amyotrophic lateral sclerosis. *Journal of the neurological sciences*, Vol.156, No.1, pp. 65-72, ISSN 0022-510X.
- Williamson, T. L. & Cleveland, D. W. (1999). Slowing of axonal transport is a very early event in the toxicity of ALS-linked SOD1 mutants to motor neurons. *Nature neuroscience*, Vol.2, No.1, (January 1999), pp. 50-56, ISSN 1097-6256.
- Wong, P. C., Pardo, C. A., Borchelt, D. R., Lee, M. K., Copeland, N. G., Jenkins, N. A., Sisodia, S. S., Cleveland, D. W. & Price, D. L. (1995). An adverse property of a familial ALS-linked SOD1 mutation causes motor neuron disease characterized by vacuolar degeneration of mitochondria. *Neuron*, Vol.14, No.6, (June 1995), pp. 1105-1116, ISSN 0896-6273.

- Yamanaka, K., Chun, S. J., Boillee, S., Fujimori-Tonou, N., Yamashita, H., Gutmann, D. H., Takahashi, R., Misawa, H. & Cleveland, D. W. (2008). Astrocytes as determinants of disease progression in inherited amyotrophic lateral sclerosis. *Nature neuroscience*, Vol.11, No.3, (March 2008), pp. 251-253, ISSN 1097-6256.
- Yang, W. W., Sidman, R. L., Taksir, T. V., Treleaven, C. M., Fidler, J. A., Cheng, S. H., Dodge, J. C. & Shihabuddin, L. S. (2011). Relationship between neuropathology and disease progression in the SOD1(G93A) ALS mouse. *Experimental neurology*, Vol.227, No.2, (February 2011), pp. 287-295, ISSN 1090-2430 (Electronic), 0014-4886 (Linking).
- Zagami, C. J., Beart, P. M., Wallis, N., Nagley, P. & O'Shea, R. D. (2009). Oxidative and excitotoxic insults exert differential effects on spinal motoneurons and astrocytic glutamate transporters: Implications for the role of astrogliosis in amyotrophic lateral sclerosis. *Glia*, Vol.57, No.2, (January 2009), pp. 119-135, ISSN 1098-1136 (Electronic), 0894-1491 (Linking).
- Zhang, F., Strom, A. L., Fukada, K., Lee, S., Hayward, L. J. & Zhu, H. (2007). Interaction between familial amyotrophic lateral sclerosis (ALS)-linked SOD1 mutants and the dynein complex. *The Journal of biological chemistry*, Vol.282, No.22, (June 2007), pp. 16691-16699, ISSN 0021-9258.
- Zhu, S., Stavrovskaya, I. G., Drozda, M., Kim, B. Y., Ona, V., Li, M., Sarang, S., Liu, A. S., Hartley, D. M., Wu, D. C., Gullans, S., Ferrante, R. J., Przedborski, S., Kristal, B. S. & Friedlander, R. M. (2002). Minocycline inhibits cytochrome c release and delays progression of amyotrophic lateral sclerosis in mice. *Nature*, Vol.417, No.6884, (May 2002), pp. 74-78, ISSN 0028-0836.



## **Amyotrophic Lateral Sclerosis**

Edited by Prof. Martin Maurer

ISBN 978-953-307-806-9

Hard cover, 718 pages

**Publisher** InTech

**Published online** 20, January, 2012

**Published in print edition** January, 2012

Though considerable amount of research, both pre-clinical and clinical, has been conducted during recent years, Amyotrophic Lateral Sclerosis (ALS) remains one of the mysterious diseases of the 21st century. Great efforts have been made to develop pathophysiological models and to clarify the underlying pathology, and with novel instruments in genetics and transgenic techniques, the aim for finding a durable cure comes into scope. On the other hand, most pharmacological trials failed to show a benefit for ALS patients. In this book, the reader will find a compilation of state-of-the-art reviews about the etiology, epidemiology, and pathophysiology of ALS, the molecular basis of disease progression and clinical manifestations, the genetics familial ALS, as well as novel diagnostic criteria in the field of electrophysiology. An overview over all relevant pharmacological trials in ALS patients is also included, while the book concludes with a discussion on current advances and future trends in ALS research.

### **How to reference**

In order to correctly reference this scholarly work, feel free to copy and paste the following:

Luz Diana Santa-Cruz, Uri Nimrod Ramírez-Jarquín and Ricardo Tapia (2012). Role of Mitochondrial Dysfunction in Motor Neuron Degeneration in ALS, Amyotrophic Lateral Sclerosis, Prof. Martin Maurer (Ed.), ISBN: 978-953-307-806-9, InTech, Available from: <http://www.intechopen.com/books/amyotrophic-lateral-sclerosis/role-of-mitochondrial-dysfunction-in-motor-neuron-degeneration-in-als>

# **INTECH**

open science | open minds

### **InTech Europe**

University Campus STeP Ri  
Slavka Krautzeka 83/A  
51000 Rijeka, Croatia  
Phone: +385 (51) 770 447  
Fax: +385 (51) 686 166  
[www.intechopen.com](http://www.intechopen.com)

### **InTech China**

Unit 405, Office Block, Hotel Equatorial Shanghai  
No.65, Yan An Road (West), Shanghai, 200040, China  
中国上海市延安西路65号上海国际贵都大饭店办公楼405单元  
Phone: +86-21-62489820  
Fax: +86-21-62489821

© 2012 The Author(s). Licensee IntechOpen. This is an open access article distributed under the terms of the [Creative Commons Attribution 3.0 License](#), which permits unrestricted use, distribution, and reproduction in any medium, provided the original work is properly cited.