

Neuropathological Disorders and Calcium Independent Forms of Phospholipase A₂ Activities in the Brain

Julie Allyson and Guy Massicotte
Université du Québec à Trois-Rivières
Trois-Rivières, Québec,
Canada

1. Introduction

Phospholipases A₂ (PLA₂s) constitute a large and diverse group of enzymes with broad biological functions, ranging from membrane synthesis and turnover to the generation of signaling molecules. So far, more than 20 isoforms of PLA₂ presenting diverse characteristics, including calcium requirement and subcellular localization, have been documented. Based on their nucleotide sequence and other properties, PLA₂ enzymes have been categorized into 15 groups (I-XV) – according to the classification of Dennis (Burke & Dennis, 2009a, 2009b). Released by cells, several groups of PLA₂s are relatively small proteins (~14 kDa) that require millimolar amounts of calcium for their optimal activation. These groups of enzymes have historically been called the secreted forms of PLA₂ (or sPLA₂). The remaining groups are larger proteins, localized in intracellular compartments, which are either dependent or not on calcium ions.

The first intracellular PLA₂ to be cloned was a 85-kD protein, classified as a group IV PLA₂ (Dennis, 1997; Leslie, 1997). This enzyme, now designated as cytosolic PLA₂ α (cPLA₂ α), is known to be under the influence of extracellular signals likely to induce calcium mobilization and phosphorylation (Leslie, 1997). Another group of PLA₂ (group VI), which does not require calcium variations for its activity, has been cloned (Balboa et al., 1997; Ma et al., 1997; Tang et al., 1997). This PLA₂ isoform has been designated as calcium-independent PLA₂ (iPLA₂) (Balsinde & Dennis, 1997; Dennis, 1997) and, according to numerous lines of biochemical evidence, may account for most of the PLA₂ activity detected in resting cells. From a pharmacological perspective, iPLA₂ activity is markedly reduced by bromoenol lactone (BEL) suicide substrate, which is not an effective inhibitor of sPLA₂ or cPLA₂ enzymes at comparable concentrations (Balboa et al., 1997; Kudo & Murakami, 2002). Several interesting reviews have considered the functional and pathological implications of PLA₂ enzymes (Balsinde & Balboa, 2005; Bazan et al., 1993; Brown et al., 2003; Farooqui & Horrocks, 2004; Farooqui et al., 2004; Hooks & Cummings, 2008; Kolko et al., 2007; Kudo & Murakami, 2002; Leslie, 2004; Phillis & O'Regan, 2004; Sun et al., 2004; Sun et al., 2005). In this report, we will describe new and unique functional roles of iPLA₂ in the regulation of brain glutamate receptor functions, neuronal plasticity and neurodegenerative processes.

2. iPLA₂ isoforms and functions

Among PLA₂ enzymes, group IV (cPLA₂) and group VI (iPLA₂) families represent intracellular enzymes with a catalytic serine in their lipase consensus motif. Various studies, including gene targeting, have indicated that group IVA cPLA₂ (cPLA₂α), which is regulated by calcium-dependent membrane translocation and mitogen-activated protein kinase (MAPK)-dependent phosphorylation, is central in stimulus-dependent eicosanoid biosynthesis (Bonventre et al., 1997; Uozumi et al., 1997). On the other hand, group VIA iPLA₂ (iPLA₂β) and group VIB iPLA₂ (iPLA₂γ) isoforms mainly exhibit PLA₂ activity, whereas other iPLA₂ isoforms δ, ε, ξ and η display triglyceride lipase and transacylase activities (Table 1) in marked preference to PLA₂ activity (Jenkins et al., 2004; Quistad et al., 2003). Group VIA iPLA₂β, the most extensively studied iPLA₂ isoform, has been implicated in various cellular events, such as phospholipid remodelling (Balsinde et al., 1997; Balsinde & Dennis, 1997), eicosanoid formation (Tay & Melendez, 2004), cell proliferation (Herbert & Walker, 2006), apoptosis (Atsumi et al., 1998), and activation of store-operated channels and capacitative calcium influx (Smani et al., 2004). Disruption of the iPLA₂β gene causes impaired sperm motility (Bao et al., 2004), mitigated insulin secretion (Bao, Bohrer et al., 2006; Bao, Song et al., 2006) and neuronal disorders presenting iron dyshomeostasis (Morgan et al., 2006).

Group	Source	Molecular Mass (kDa)	Feature	Alternate names
VIA-1	Human/Murine	84-85	8 ankyrin repeats	iPLA ₂
VIA-2	Human/Murine	88-90	7 ankyrin repeats	iPLA ₂ β
VIB	Human/Murine	88-91	Membrane-bound	iPLA ₂ γ
VIC	Human/Murine	146	Integral membrane protein	iPLA ₂ δ
VID	Human	53	Acylglycerol transacylase, triglycerol lipase	iPLA ₂ ε
VIE	Human	57	Acylglycerol transacylase, triglycerol lipase	iPLA ₂ ζ
VIF	Human	28	Acylglycerol transacylase, triglycerol lipase	iPLA ₂ η

Table 1. Calcium-independent group VI phospholipase A₂ (iPLA₂) (Adapted from (Schaloske & Dennis, 2006))

Group VIB iPLA₂ γ is a membrane-bound iPLA₂ enzyme with unique features, such as utilization of distinct translation initiation sites producing different sizes of enzymes with distinct subcellular localizations (Kinsey, McHowat, Beckett et al., 2007; Mancuso et al., 2000; Mancuso et al., 2004; Murakami et al., 2005; Tanaka et al., 2000; J. Yang et al., 2003) and phospholipid selectivity in terms of sn-1/sn-2 positional specificity that differs among substrates (Yan et al., 2005) iPLA₂ γ has a mitochondrial localization signal in the N-terminal region and a peroxisomal localization signal near the C-terminus, and the 88-kDa full-length and 63-kDa translation products of iPLA₂ γ are preferentially distributed in mitochondria and peroxisomes, respectively (Kinsey, McHowat, Beckett et al., 2007; Mancuso et al., 2004; Murakami et al., 2005). In the brain, iPLA₂ represents predominant phospholipase activity in cells under resting conditions (Wolf et al., 1995; H. C. Yang et al., 1999). Reverse transcription-polymerase chain reaction experiments have revealed that rat brains constitutively express messenger RNAs for at least 3 calcium-independent PLA₂ isoforms, iPLA₂ β , iPLA₂ γ and cPLA₂ γ (Kinsey et al., 2005; Tang et al., 1997; Underwood et al., 1998). These isoforms are characterized by differential sensitivity to PLA₂ inhibitors and, by isolating each enantiomer of the iPLA₂ inhibitor BEL, Jenkins et al. (Jenkins et al., 2002) established that the (S)-enantiomer of BEL selectively reduces iPLA₂ β activity, while its (R)-enantiomer blocks the iPLA₂ γ isoform more efficiently.

Although little is known about iPLA₂ functions in neurons, a growing body of evidence suggests their involvement in hippocampal long-term potentiation (LTP) of excitatory synaptic transmission (Fujita et al., 2001; Wolf et al., 1995). Hippocampal LTP, first described by Bliss and Lomo in 1973, is commonly regarded as a functional model of synaptic adaptation (i.e. plasticity) that likely participates in learning and memory (Bliss & Collingridge, 1993). PLA₂ activities are increased in membranes of slices prepared from the dentate gyrus after LTP induction in anaesthetized rats (Clements et al., 1991) and could be involved in hippocampal LTP expression by elevating the production of arachidonic acid (AA) that retrogradely increases transmitter release at glutamatergic synapses (Drapeau et al., 1990; J. H. Williams et al., 1989). Facilitation of transmitter release by PLA₂s during LTP is also reinforced by the fact that iPLA₂ activity plays an important role in membrane fusion processes required for exocytosis (Brown et al., 2003; Takuma & Ichida, 1997).

The notion that iPLA₂ activity may facilitate LTP expression by increasing glutamate release is complicated, however, by an abundant number of reports demonstrating that synaptic potentiation, at least in area CA1 of the hippocampus, is not dependent on changes in transmitter release, but is rather mediated by mechanisms involving the up-regulation of postsynaptic responses mediated by alpha-amino-3-hydroxy-5-methyl-4-isoxazole-propionic acid (AMPA) receptors at glutamatergic synapses (Hayashi et al., 2000). Several alterations have been reported at postsynaptic sites during LTP, including faster kinetics of receptor-associated ion channels (Ambros-Ingerson & Lynch, 1993; Ambros-Ingerson et al., 1993), redistribution of existing receptors within the postsynaptic density (Xie et al., 1997) and insertion of new receptors at synapses (Lu et al., 2001; Pickard et al., 2001). Consistent with these observations, we recently demonstrated that pretreatment of hippocampal slices with the iPLA₂ inhibitor BEL completely abolishes AMPA receptor translocation in synaptic membranes and expression of CA1 hippocampal LTP (Martel et al., 2006). Interestingly, both LTP and AMPA receptor translocation display enantio-selective impairment by the iPLA₂ γ blocker (R)-BEL but not by the iPLA₂ β inhibitor (S)-BEL, suggesting that iPLA₂ γ represents the crucial isoform governing hippocampal synaptic strengthening.

iPLA₂ γ mRNAs and proteins are enriched in the endoplasmic reticulum (ER)-Golgi apparatus in several cell types (Kinsey et al., 2005), where they may be essential for diverse intracellular trafficking pathways, such as retrograde movement from the Golgi complex to the ER, transport of material from the trans-Golgi network to the plasma membrane or recycling of membrane and receptors through endocytic pathways (Brown et al., 2003). In this matter, Pechoux et al. (Pechoux et al., 2005) reported that iPLA₂ inhibition slowed down the transport of caseins from the ER to the Golgi apparatus and from the trans-Golgi network to the plasma membrane, indicating that iPLA₂ could participate in membrane trafficking events leading to the secretion of milk proteins. Interestingly, translocation of AMPA receptors originating from the ER-Golgi complex to postsynaptic membranes might be critically involved in LTP (Broutman & Baudry, 2001). Thus, the iPLA₂ γ isoform may be well-suited to favour AMPA receptor translocation from intracellular pools to synaptic membranes during LTP.

Interestingly, impairment in synaptic plasticity by PLA₂ inhibition is correlated with loss of animal abilities to perform on memory tasks. For instance, intracerebral injection of wide-spectrum PLA₂ inhibitors into the chick intermediate medial hyperstriatum ventrale curbs the learning of a passive avoidance task (Holscher & Rose, 1994), while intraperitoneal injections in rats impede spatial learning tested in the Morris water maze (Holscher et al., 1995). Additionally, intracerebroventricular injection of specific iPLA₂ inhibitors 30 min before a learning session impairs spatial working memory in rodents (Fujita et al., 2000). Acquisition of 1-trial step-down inhibitory avoidance in rats correlates with iPLA₂ activity in the hippocampus, and bilateral injection of iPLA₂ inhibitors in region CA1 of the dorsal hippocampus prior to training hinders both short-term and long-term memory (Schaeffer & Gattaz, 2005). Hence, intact iPLA₂ activity seems important for proper acquisition of new memories. In a modified protocol developed to test memory retrieval, the same group recently showed that injection of the dual cPLA₂ and iPLA₂ inhibitor palmitoyl trifluoromethylketone in region CA1 of the rat dorsal hippocampus before performance testing impaired trained behavior in the step-down inhibitory avoidance task (Schaeffer & Gattaz, 2007). Importantly, memory retrieval was re-established after recovery of PLA₂ activity, indicating that these PLA₂s are indeed necessary for memory retrieval. However, identification of iPLA₂ isoforms in memory acquisition and retrieval remains to be addressed.

3. iPLA₂ and neuronal cell death mechanisms

Recently, evidence from non-neuronal cells has suggested that iPLA₂ enzymes may have diverse effects on cell death. First, constitutive iPLA₂ activity may contribute to cell death since iPLA₂ β overexpression amplifies thapsigargin-induced apoptosis in INS-1 insulinoma cells (Ramanadham et al., 2004) and accelerates U937 cell death after long-term exposure to hydrogen peroxide (Perez et al., 2004). iPLA₂ has been shown to play a pivotal role in oxidant damage of astrocytes (Xu et al., 2003), and its blockade by BEL dampens oligomeric amyloid-beta (A β 1-42-induced mitochondrial membrane potential loss and reactive oxygen species production in these cells (Zhu et al., 2006). Moreover, iPLA₂ inhibition reduces the size of infarcts produced by global ischemia (S. D. Williams & Gottlieb, 2002). On the other hand, iPLA₂ activity has also been shown to protect against cell death, as inhibition of iPLA₂ accentuates oxidant-induced cell death in renal proximal tubule cells and astrocytes (Cummings et al., 2002; Peterson et al., 2007). Likewise, iPLA₂ activity may also have

deleterious or beneficial effects on neurons. For instance, acute inhibition of iPLA₂ activity by racemic BEL has been found to be neuroprotective in organotypic hippocampal slices exposed to oxygen-glucose deprivation (Strokin et al., 2006). In contrast, immature cultures of primary cortical neurons exposed for several days to BEL show decreased neuritogenesis and cellular viability (Forlenza et al., 2007; Mendes et al., 2005). Moreover, iPLA₂β knockout mice exhibit abnormal motor behaviors accompanied by the appearance of vacuoles and ubiquitin-positive axonal swelling (spheroids) in many brain regions (Malik et al., 2008; Shinzawa et al., 2008), suggesting that iPLA₂β dysfunction leads to neuroaxonal dystrophy. While the reported impact of iPLA₂ on cell viability is mostly attributable to iPLA₂β, involvement of the iPLA₂γ isoform is much less understood. A previous report demonstrated that iPLA₂γ localized in mitochondria catalyzes AA liberation that mediates mitochondrial permeability transition, a key control point for apoptosis (Kinsey, McHowat, Patrick et al., 2007). On the other hand, iPLA₂γ expression may exert cytoprotective effects during complement-mediated glomerular epithelial cell injury (Cohen et al., 2008). In addition, recent findings from our laboratory have revealed that constitutive iPLA₂γ activity might represent an important neuroprotective system capable of limiting brain excitotoxic damage. We have shown that inhibition of iPLA₂γ by the enantio-specific inhibitor (R)-BEL makes hippocampal slice cultures more vulnerable to AMPA-mediated excitotoxicity (Menard et al., 2007). Overactivation of N-methyl-D-aspartic acid (NMDA) or AMPA glutamatergic receptors, allowing the entry of high cation levels into cells, activates a number of enzymes, including ATPases, lipases, proteases and endonucleases that, in turn, deplete energy stores or damage cell membranes, cytoarchitecture or nucleus, respectively. Excitotoxicity has been reported to contribute to a variety of neuropathological disorders, including ischemic stroke, epilepsy, amyotrophic lateral sclerosis and Alzheimer's disease (AD) (Kwak & Weiss, 2006; Villmann & Becker, 2007). Interestingly, the harmful effect of iPLA₂γ inhibition on AMPA-mediated toxicity is associated with selective up-regulation of AMPA receptor GluR1 subunit (but not GluR2) phosphorylation with a subsequently increased level in synaptic membrane fractions (Menard et al., 2007; Menard et al., 2005; Villmann & Becker, 2007). In the hippocampus, AMPA receptors generally form heterodimers containing 2 copies of each of the GluR1 and GluR2 subunits. It is now well-recognized that GluR2 subunits render AMPA receptors impermeable to calcium. Consequently, its presence or absence plays a critical role in cellular calcium homeostasis and in determining susceptibility to excitotoxicity (Geiger et al., 1995; Sommer et al., 1991). Hence, the reduction of iPLA₂γ activity, by promoting surface expression of the GluR1 subunit over the GluR2 subunit (which is reflected by a rise in the GluR1/GluR2 ratio in the membrane fraction), could exacerbate excitotoxic cell death through the formation of GluR2-lacking AMPA receptors that would allow adverse Ca²⁺ influx upon prolonged AMPA receptor activation. Consistent with this possibility, the greater cell death observed under iPLA₂γ inhibition is prevented by GluR2-lacking AMPA receptor antagonists (Menard et al., 2007). How inhibition of iPLA₂γ influences the expression of AMPA receptor subtypes in synaptic membranes remains an open question. As mentioned earlier, this may occur by the sorting of protein transport through intracellular secretory pathways (Pechoux et al., 2005). There are other circumstances in which GluR1 subunits are selectively up-regulated in hippocampal neurons, such as after activity deprivation elicited by prolonged blockade of AMPA receptors (Thiagarajan et al., 2005) or tumor necrosis factor-alpha receptor activation (Stellwagen et al., 2005). In the latter

case, it has been proposed that up-regulation of GluR1 homomeric receptors could derive from a reserve pool of non-GluR2-containing AMPA receptors existing near the membrane.

4. iPLA₂ dysfunction and neuropathological disorders

Whereas cPLA₂ and sPLA₂ are commonly believed to be preferentially involved in AA release, emerging evidence indicates that iPLA₂ activity can contribute to docosahexaenoic acid (DHA) release from brain phospholipids (J. T. Green et al., 2008). To our knowledge, the first suggestion that brain iPLA₂ activity may be crucial for DHA release came from a study by Strokin et al. (Strokin et al., 2003) who showed that racemic BEL inhibited DHA release from astrocytes. Later, using siRNA silencing procedures, the same group demonstrated that DHA release from phospholipids of astrocytes was mainly dependent on iPLA₂ γ activity (Strokin et al., 2007). DHA is one of the most abundant omega-3 polyunsaturated fatty acids (PUFA) present in phospholipids of the mammalian brain (Glomset, 2006), where it is recognized to be important for the maintenance of neural membranes and brain function integrity (Youdim et al., 2000). Deficient dietary intake of DHA has been associated with lower performance of learning abilities in rodents (Catalan et al., 2002; Fedorova & Salem, 2006; Takeuchi et al., 2002). On the other hand, DHA dietary supplementation could decrease the risk of developing AD (Calon & Cole, 2007; Calon et al., 2005; Calon et al., 2004) or exert neuroprotective actions in a mouse model presenting numerous aspects of Parkinson's disease (Bousquet et al., 2008), while high-fat consumption combined with low omega-3 PUFA intake promotes AD-like neuropathology (Julien et al., 2008).

Both iPLA₂ activity and DHA levels have been reported to be decreased in the plasma of AD patients (Conquer et al., 2000; Gattaz et al., 2004). iPLA₂ activity is also lower in AD brains (Ross et al., 1999; Talbot et al., 2000). Whether or not decreased iPLA₂ γ activity, through its capacity to alter DHA release from brain astrocytes, is a factor that contributes to AD pathology remains to be established. Numerous neurobiological studies have demonstrated that DHA may be acting at different fundamental levels to counteract the cellular manifestations of AD. There are, for instance, strong indications that DHA release in the brain may diminish oxidative stress (Wu et al., 2004; Yavin et al., 2002) and glutamate-induced toxicity (Wang et al., 2003). In this line, DHA-induced reduction of excitotoxic damage in the hippocampus might, in fact, be dependent on internalization of AMPA receptors (Menard et al., 2009). The potential ability of DHA to reduce caspase activation (Calon et al., 2005; Calon et al., 2004), A β peptide accumulation and tau hyperphosphorylation (K. N. Green et al., 2007; Oksman et al., 2006) also strongly supports the notion that DHA deficiency, through iPLA₂ down-regulation, could represent a precursor event that likely initiates the cellular manifestations of AD pathology.

This has been the premise of our recent investigation on the influence of iPLA₂ inhibition on microtubule-associated protein tau phosphorylation. We determined whether iPLA₂ blockade could contribute to the development of tau hyperphosphorylation in cultured hippocampal slices from transgenic P301L mice expressing human tau. In this experimental model, treatment for up to 12 h with the specific iPLA₂ γ inhibitor (R)-BEL resulted in significantly increased tau phosphorylation at Thr231, Ser199/202 and Ser404 sites, and in total tau levels. High-resolution imaging studies have demonstrated that hyperphosphorylation is primarily localized in cell bodies and dendrites of hippocampal pyramidal neurons (Fig. 1).

These changes appear to be associated with up-regulation of P25, an activator of cyclin-dependent kinase 5, and phosphorylation/activation of MAPK. These data provide strong evidence that constitutive iPLA₂ γ activity is important in the regulation of tau hyperphosphorylation in hippocampal pyramidal neurons, raising the possibility that iPLA₂ dysfunctions might contribute to the development of tauopathies in AD. In this line, a putative biochemical model that accounts for the potential influence of iPLA₂ γ on Tau pathology is represented in Figure 2

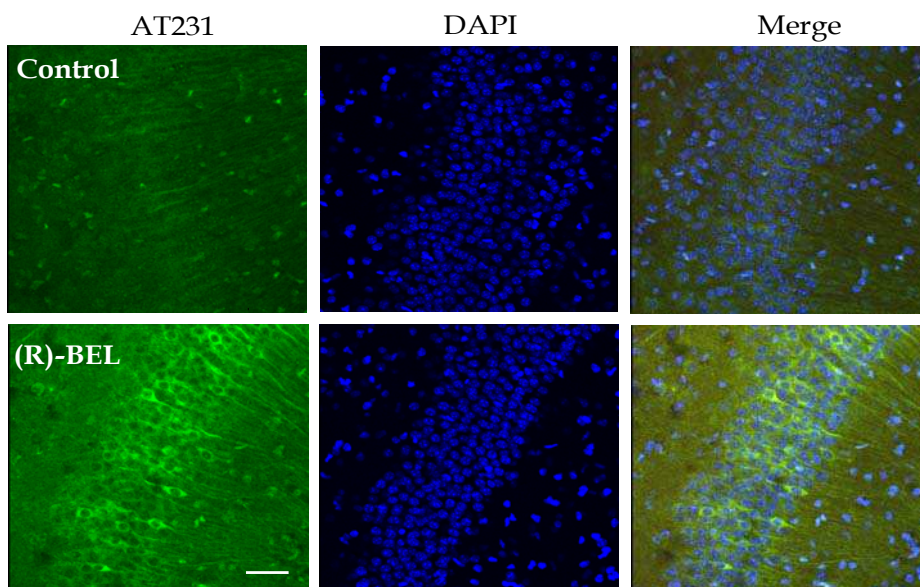


Fig. 1. Inhibition of iPLA₂ γ induces Tau phosphorylation in area CA1 of the hippocampus. Cultured hippocampal slices from P301L tau transgenic mice were pre-exposed to the iPLA₂ γ inhibitor R-BEL. Slices were then processed for confocal immunofluorescence microscopy with an antibody known to recognize the Thr-231 Tau epitope (AT231, in green). When compared to controls (upper panel), immunostaining revealed increased phosphorylation in the CA1 region of cultured hippocampal slices pre-exposed to 3 μ M (R)-BEL for a period of 12 h (lower panel). DAPI (in blue) was included in the mounting medium to label nuclei. Scale bar = 25 μ m

One of the central hypotheses underlying the pathophysiology of AD is the production of cytotoxic A β peptides that impairs neuronal activity and leads to a decline in memory and cognition (Palop et al., 2006). The exact mechanisms by which A β peptides contribute to AD pathogenesis remain uncertain. PLA₂ enzymes may be involved in this condition, as A β peptides accentuate cPLA₂ α activity in neuronal cultures (Zhu et al., 2006) and primary cortical astrocytes (Sanchez-Mejia et al., 2008), while A β -induced learning and memory deficits in a transgenic mouse model of AD are prevented after genetic ablation of cPLA₂ α activity in the brain (Sanchez-Mejia et al., 2008). Regarding the iPLA₂ system, it appears that its activity is essential for maintaining membrane phospholipid integrity by reducing peroxidative damage, especially injuries originating in the mitochondria. In this

regard, iPLA₂ expression prevents the loss of mitochondrial membrane potential and attenuates the release of cytochrome c as well as apoptotic proteins, and ultimately diminishes apoptosis in INS-1 cells exposed to staurosporine (Seleznev et al., 2006). Furthermore, Kinsey et al. (Kinsey et al., 2008; Kinsey, McHowat, Patrick et al., 2007) reported that prominent PLA₂ activity in the mitochondria of rabbit renal proximal tubular cells comes from iPLA₂ γ and is of capital importance for the prevention and repair of basal lipid peroxidation and the maintenance of mitochondrial viability. Based on recent studies, it has been proposed that A β -induced neurotoxicity might derive from mitochondrial defects. Indeed, in vitro experiments have shown that A β peptides can be internalized by cells, imported into mitochondria and ultimately elicit mitochondrial dysfunctions (Hansson Petersen et al., 2008). Given its localization, it is thus tempting to propose that iPLA₂ γ might represent an important cellular component that prevents mitochondrial dysfunctions. Experiments are required to determine whether iPLA₂ γ overexpression activity might exert protective effects against A β peptide-induced mitochondrial dysfunctions.

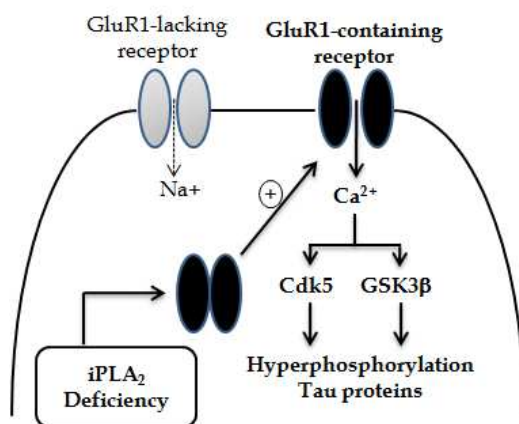


Fig. 2. A putative model illustrating the potential implication of iPLA₂ γ in Alzheimer's disease. In this simplified model, iPLA₂ dysfunction leads to delivery of new GluR1-containing receptors on neuronal membranes. These receptors are then inclined to induce calcium influx and, eventually, Tau phosphorylation by calcium-dependent protein kinases such as Cdk5 and GSK-3 β

5. Conclusion

Besides AD, aberrant function of iPLA₂s has also been observed in several other neurological disorders. For instance, increased iPLA₂ activity might be an important factor that contributes to phospholipid abnormalities in schizophrenia or bipolar patients with a history of psychosis (Ross et al., 2006; Ross et al., 1999). However, the relationship between iPLA₂ up-regulation and cellular manifestations of schizophrenia requires further investigation. As mentioned earlier, because iPLA₂ γ regulates glutamate receptor subunit expression on cell membranes and functions, it will be interesting to examine whether the increase in iPLA₂ γ activity can lead to down-regulation of the AMPA receptor GluR1 subunit. This is of particular importance, since GluR1 down-regulation may evoke striatal

hyperdopaminergia (Wiedholz et al., 2008), a well-established biological defect involved in schizophrenia-related behaviours. Interestingly, the relationship between iPLA₂s and the dopaminergic system is reinforced by the fact that iPLA₂ inhibition or knockdown in the rat striatum, motor cortex and thalamus results in the apparition of Parkinson-related behaviours (Lee et al., 2007), which are also known to depend on dopamine dysfunction. Thus, given the growing evidence relating the importance of iPLA₂s in physiological and pathological conditions, targeting iPLA₂ activity may represent a potentially new therapeutic strategy against several neurological disorders.

6. References

- Ambros-Ingerson, J., & Lynch, G. (1993). Channel gating kinetics and synaptic efficacy: a hypothesis for expression of long-term potentiation. *Proc Natl Acad Sci U S A*, Vol. 90, No. 16, pp.7903-7907.
- Ambros-Ingerson, J., Xiao, P., Larson, J., & Lynch, G. (1993). Waveform analysis suggests that LTP alters the kinetics of synaptic receptor channels. *Brain Res*, Vol. 620, No. 2, pp.237-244.
- Atsumi, G., Tajima, M., Hadano, A., Nakatani, Y., Murakami, M., & Kudo, I. (1998). Fas-induced arachidonic acid release is mediated by Ca²⁺-independent phospholipase A₂ but not cytosolic phospholipase A₂, which undergoes proteolytic inactivation. *J Biol Chem*, Vol. 273, No. 22, pp.13870-13877.
- Balboa, M. A., Balsinde, J., Jones, S. S., & Dennis, E. A. (1997). Identity between the Ca²⁺-independent phospholipase A₂ enzymes from P388D1 macrophages and Chinese hamster ovary cells. *J Biol Chem*, Vol. 272, No. 13, pp.8576-8580.
- Balsinde, J., & Balboa, M. A. (2005). Cellular regulation and proposed biological functions of group VIA calcium-independent phospholipase A₂ in activated cells. *Cell Signal*, Vol. 17, No. 9, pp.1052-1062.
- Balsinde, J., Balboa, M. A., & Dennis, E. A. (1997). Antisense inhibition of group VI Ca²⁺-independent phospholipase A₂ blocks phospholipid fatty acid remodeling in murine P388D1 macrophages. *J Biol Chem*, Vol. 272, No. 46, pp.29317-29321.
- Balsinde, J., & Dennis, E. A. (1997). Function and inhibition of intracellular calcium-independent phospholipase A₂. *J Biol Chem*, Vol. 272, No. 26, pp.16069-16072.
- Bao, S., Bohrer, A., Ramanadham, S., Jin, W., Zhang, S., & Turk, J. (2006). Effects of stable suppression of Group VIA phospholipase A₂ expression on phospholipid content and composition, insulin secretion, and proliferation of INS-1 insulinoma cells. *J Biol Chem*, Vol. 281, No. 1, pp.187-198.
- Bao, S., Miller, D. J., Ma, Z., Wohltmann, M., Eng, G., Ramanadham, S., et al. (2004). Male mice that do not express group VIA phospholipase A₂ produce spermatozoa with impaired motility and have greatly reduced fertility. *J Biol Chem*, Vol. 279, No. 37, pp.38194-38200.
- Bao, S., Song, H., Wohltmann, M., Ramanadham, S., Jin, W., Bohrer, A., et al. (2006). Insulin secretory responses and phospholipid composition of pancreatic islets from mice that do not express Group VIA phospholipase A₂ and effects of metabolic stress on glucose homeostasis. *J Biol Chem*, Vol. 281, No. 30, pp.20958-20973.
- Bazan, N. G., Allan, G., & Rodriguez de Turco, E. B. (1993). Role of phospholipase A₂ and membrane-derived lipid second messengers in membrane function and transcriptional activation of genes: implications in cerebral ischemia and neuronal excitability. *Prog Brain Res*, Vol. 96, pp.247-257.

- Bliss, T. V., & Collingridge, G. L. (1993). A synaptic model of memory: long-term potentiation in the hippocampus. *Nature*, Vol. 361, No. 6407, pp.31-39.
- Bonventre, J. V., Huang, Z., Taheri, M. R., O'Leary, E., Li, E., Moskowitz, M. A., et al. (1997). Reduced fertility and postischemic brain injury in mice deficient in cytosolic phospholipase A2. *Nature*, Vol. 390, No. 6660, pp.622-625.
- Bousquet, M., Saint-Pierre, M., Julien, C., Salem, N., Jr., Cicchetti, F., & Calon, F. (2008). Beneficial effects of dietary omega-3 polyunsaturated fatty acid on toxin-induced neuronal degeneration in an animal model of Parkinson's disease. *FASEB J*, Vol. 22, No. 4, pp.1213-1225.
- Broutman, G., & Baudry, M. (2001). Involvement of the secretory pathway for AMPA receptors in NMDA-induced potentiation in hippocampus. *J Neurosci*, Vol. 21, No. 1, pp.27-34.
- Brown, W. J., Chambers, K., & Doody, A. (2003). Phospholipase A2 (PLA2) enzymes in membrane trafficking: mediators of membrane shape and function. *Traffic*, Vol. 4, No. 4, pp.214-221.
- Burke, J. E., & Dennis, E. A. (2009a). Phospholipase A2 biochemistry. *Cardiovasc Drugs Ther*, Vol. 23, No. 1, pp.49-59.
- Burke, J. E., & Dennis, E. A. (2009b). Phospholipase A2 structure/function, mechanism, and signaling. *J Lipid Res*, Vol. 50 Suppl, pp.S237-242.
- Calon, F., & Cole, G. (2007). Neuroprotective action of omega-3 polyunsaturated fatty acids against neurodegenerative diseases: evidence from animal studies. *Prostaglandins Leukot Essent Fatty Acids*, Vol. 77, No. 5-6, pp.287-293.
- Calon, F., Lim, G. P., Morihara, T., Yang, F., Ubeda, O., Salem, N., Jr., et al. (2005). Dietary n-3 polyunsaturated fatty acid depletion activates caspases and decreases NMDA receptors in the brain of a transgenic mouse model of Alzheimer's disease. *Eur J Neurosci*, Vol. 22, No. 3, pp.617-626.
- Calon, F., Lim, G. P., Yang, F., Morihara, T., Teter, B., Ubeda, O., et al. (2004). Docosahexaenoic acid protects from dendritic pathology in an Alzheimer's disease mouse model. *Neuron*, Vol. 43, No. 5, pp.633-645.
- Catalan, J., Moriguchi, T., Slotnick, B., Murthy, M., Greiner, R. S., & Salem, N., Jr. (2002). Cognitive deficits in docosahexaenoic acid-deficient rats. *Behav Neurosci*, Vol. 116, No. 6, pp.1022-1031.
- Clements, M. P., Bliss, T. V., & Lynch, M. A. (1991). Increase in arachidonic acid concentration in a postsynaptic membrane fraction following the induction of long-term potentiation in the dentate gyrus. *Neuroscience*, Vol. 45, No. 2, pp.379-389.
- Cohen, D., Papillon, J., Aoudjit, L., Li, H., Cybulsky, A. V., & Takano, T. (2008). Role of calcium-independent phospholipase A2 in complement-mediated glomerular epithelial cell injury. *Am J Physiol Renal Physiol*, Vol. 294, No. 3, pp.F469-479.
- Conquer, J. A., Tierney, M. C., Zecevic, J., Bettger, W. J., & Fisher, R. H. (2000). Fatty acid analysis of blood plasma of patients with Alzheimer's disease, other types of dementia, and cognitive impairment. *Lipids*, Vol. 35, No. 12, pp.1305-1312.
- Cummings, B. S., McHowat, J., & Schnellmann, R. G. (2002). Role of an endoplasmic reticulum Ca(2+)-independent phospholipase A(2) in oxidant-induced renal cell death. *Am J Physiol Renal Physiol*, Vol. 283, No. 3, pp.F492-498.
- Dennis, E. A. (1997). The growing phospholipase A2 superfamily of signal transduction enzymes. *Trends Biochem Sci*, Vol. 22, No. 1, pp.1-2.

- Drapeau, C., Pellerin, L., Wolfe, L. S., & Avoli, M. (1990). Long-term changes of synaptic transmission induced by arachidonic acid in the CA1 subfield of the rat hippocampus. *Neurosci Lett*, Vol. 115, No. 2-3, pp.286-292.
- Farooqui, A. A., & Horrocks, L. A. (2004). Brain phospholipases A₂: a perspective on the history. *Prostaglandins Leukot Essent Fatty Acids*, Vol. 71, No. 3, pp.161-169.
- Farooqui, A. A., Ong, W. Y., & Horrocks, L. A. (2004). Biochemical aspects of neurodegeneration in human brain: involvement of neural membrane phospholipids and phospholipases A₂. *Neurochem Res*, Vol. 29, No. 11, pp.1961-1977.
- Fedorova, I., & Salem, N., Jr. (2006). Omega-3 fatty acids and rodent behavior. *Prostaglandins Leukot Essent Fatty Acids*, Vol. 75, No. 4-5, pp.271-289.
- Forlenza, O. V., Mendes, C. T., Marie, S. K., & Gattaz, W. F. (2007). Inhibition of phospholipase A₂ reduces neurite outgrowth and neuronal viability. *Prostaglandins Leukot Essent Fatty Acids*, Vol. 76, No. 1, pp.47-55.
- Fujita, S., Ikegaya, Y., Nishikawa, M., Nishiyama, N., & Matsuki, N. (2001). Docosahexaenoic acid improves long-term potentiation attenuated by phospholipase A₂ inhibitor in rat hippocampal slices. *Br J Pharmacol*, Vol. 132, No. 7, pp.1417-1422.
- Fujita, S., Ikegaya, Y., Nishiyama, N., & Matsuki, N. (2000). Ca²⁺-independent phospholipase A₂ inhibitor impairs spatial memory of mice. *Jpn J Pharmacol*, Vol. 83, No. 3, pp.277-278.
- Gattaz, W. F., Forlenza, O. V., Talib, L. L., Barbosa, N. R., & Bottino, C. M. (2004). Platelet phospholipase A₂ activity in Alzheimer's disease and mild cognitive impairment. *J Neural Transm*, Vol. 111, No. 5, pp.591-601.
- Geiger, J. R., Melcher, T., Koh, D. S., Sakmann, B., Seeburg, P. H., Jonas, P., et al. (1995). Relative abundance of subunit mRNAs determines gating and Ca²⁺ permeability of AMPA receptors in principal neurons and interneurons in rat CNS. *Neuron*, Vol. 15, No. 1, pp.193-204.
- Glomset, J. A. (2006). Role of docosahexaenoic acid in neuronal plasma membranes. *Sci STKE*, Vol. 2006, No. 321, pp.pe6.
- Green, J. T., Orr, S. K., & Bazinet, R. P. (2008). The emerging role of group VI calcium-independent phospholipase A₂ in releasing docosahexaenoic acid from brain phospholipids. *J Lipid Res*, Vol. 49, No. 5, pp.939-944.
- Green, K. N., Martinez-Coria, H., Khashwji, H., Hall, E. B., Yurko-Mauro, K. A., Ellis, L., et al. (2007). Dietary docosahexaenoic acid and docosapentaenoic acid ameliorate amyloid-beta and tau pathology via a mechanism involving presenilin 1 levels. *J Neurosci*, Vol. 27, No. 16, pp.4385-4395.
- Hansson Petersen, C. A., Alikhani, N., Behbahani, H., Wiehager, B., Pavlov, P. F., Alafuzoff, I., et al. (2008). The amyloid beta-peptide is imported into mitochondria via the TOM import machinery and localized to mitochondrial cristae. *Proc Natl Acad Sci U S A*, Vol. 105, No. 35, pp.13145-13150.
- Hayashi, Y., Shi, S. H., Esteban, J. A., Piccini, A., Poncer, J. C., & Malinow, R. (2000). Driving AMPA receptors into synapses by LTP and CaMKII: requirement for GluR1 and PDZ domain interaction. *Science*, Vol. 287, No. 5461, pp.2262-2267.
- Herbert, S. P., & Walker, J. H. (2006). Group VIA calcium-independent phospholipase A₂ mediates endothelial cell S phase progression. *J Biol Chem*, Vol. 281, No. 47, pp.35709-35716.
- Holscher, C., Canevari, L., & Richter-Levin, G. (1995). Inhibitors of PLA₂ and NO synthase cooperate in producing amnesia of a spatial task. *Neuroreport*, Vol. 6, No. 5, pp.730-732.

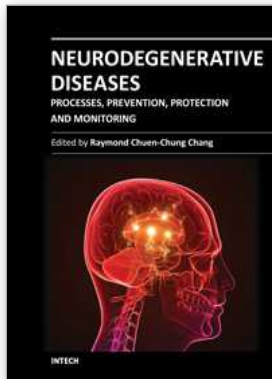
- Holscher, C., & Rose, S. P. (1994). Inhibitors of phospholipase A2 produce amnesia for a passive avoidance task in the chick. *Behav Neural Biol*, Vol. 61, No. 3, pp.225-232.
- Hooks, S. B., & Cummings, B. S. (2008). Role of Ca²⁺-independent phospholipase A2 in cell growth and signaling. *Biochem Pharmacol*, Vol. 76, No. 9, pp.1059-1067.
- Jenkins, C. M., Han, X., Mancuso, D. J., & Gross, R. W. (2002). Identification of calcium-independent phospholipase A2 (iPLA2) beta, and not iPLA2gamma, as the mediator of arginine vasopressin-induced arachidonic acid release in A-10 smooth muscle cells. Enantioselective mechanism-based discrimination of mammalian iPLA2s. *J Biol Chem*, Vol. 277, No. 36, pp.32807-32814.
- Jenkins, C. M., Mancuso, D. J., Yan, W., Sims, H. F., Gibson, B., & Gross, R. W. (2004). Identification, cloning, expression, and purification of three novel human calcium-independent phospholipase A2 family members possessing triacylglycerol lipase and acylglycerol transacylase activities. *J Biol Chem*, Vol. 279, No. 47, pp.48968-48975.
- Julien, C., Tremblay, C., Phivilay, A., Berthiaume, L., Emond, V., Julien, P., et al. (2008). High-fat diet aggravates amyloid-beta and tau pathologies in the 3xTg-AD mouse model. *Neurobiol Aging*, Vol. 31, No. 9, pp.1516-1531.
- Kinsey, G. R., Blum, J. L., Covington, M. D., Cummings, B. S., McHowat, J., & Schnellmann, R. G. (2008). Decreased iPLA2gamma expression induces lipid peroxidation and cell death and sensitizes cells to oxidant-induced apoptosis. *J Lipid Res*, Vol. 49, No. 7, pp.1477-1487.
- Kinsey, G. R., Cummings, B. S., Beckett, C. S., Saavedra, G., Zhang, W., McHowat, J., et al. (2005). Identification and distribution of endoplasmic reticulum iPLA2. *Biochem Biophys Res Commun*, Vol. 327, No. 1, pp.287-293.
- Kinsey, G. R., McHowat, J., Beckett, C. S., & Schnellmann, R. G. (2007). Identification of calcium-independent phospholipase A2gamma in mitochondria and its role in mitochondrial oxidative stress. *Am J Physiol Renal Physiol*, Vol. 292, No. 2, pp.F853-860.
- Kinsey, G. R., McHowat, J., Patrick, K. S., & Schnellmann, R. G. (2007). Role of Ca²⁺-independent phospholipase A2gamma in Ca²⁺-induced mitochondrial permeability transition. *J Pharmacol Exp Ther*, Vol. 321, No. 2, pp.707-715.
- Kolko, M., Prause, J. U., Bazan, N. G., & Heegaard, S. (2007). Human secretory phospholipase A(2), group IB in normal eyes and in eye diseases. *Acta Ophthalmol Scand*, Vol. 85, No. 3, pp.317-323.
- Kudo, I., & Murakami, M. (2002). Phospholipase A2 enzymes. *Prostaglandins Other Lipid Mediat*, Vol. 68-69, pp.3-58.
- Kwak, S., & Weiss, J. H. (2006). Calcium-permeable AMPA channels in neurodegenerative disease and ischemia. *Curr Opin Neurobiol*, Vol. 16, No. 3, pp.281-287.
- Lee, L. Y., Ong, W. Y., Farooqui, A. A., & Burgunder, J. M. (2007). Role of calcium-independent phospholipase A2 in cortex striatum thalamus cortex circuitry-enzyme inhibition causes vacuole chewing movements in rats. *Psychopharmacology (Berl)*, Vol. 195, No. 3, pp.387-395.
- Leslie, C. C. (1997). Properties and regulation of cytosolic phospholipase A2. *J Biol Chem*, Vol. 272, No. 27, pp.16709-16712.
- Leslie, C. C. (2004). Regulation of arachidonic acid availability for eicosanoid production. *Biochem Cell Biol*, Vol. 82, No. 1, pp.1-17.
- Lu, W., Man, H., Ju, W., Trimble, W. S., MacDonald, J. F., & Wang, Y. T. (2001). Activation of synaptic NMDA receptors induces membrane insertion of new AMPA receptors and LTP in cultured hippocampal neurons. *Neuron*, Vol. 29, No. 1, pp.243-254.

- Ma, Z., Ramanadham, S., Kempe, K., Chi, X. S., Ladenson, J., & Turk, J. (1997). Pancreatic islets express a Ca²⁺-independent phospholipase A₂ enzyme that contains a repeated structural motif homologous to the integral membrane protein binding domain of ankyrin. *J Biol Chem*, Vol. 272, No. 17, pp.11118-11127.
- Malik, I., Turk, J., Mancuso, D. J., Montier, L., Wohltmann, M., Wozniak, D. F., et al. (2008). Disrupted membrane homeostasis and accumulation of ubiquitinated proteins in a mouse model of infantile neuroaxonal dystrophy caused by PLA2G6 mutations. *Am J Pathol*, Vol. 172, No. 2, pp.406-416.
- Mancuso, D. J., Jenkins, C. M., & Gross, R. W. (2000). The genomic organization, complete mRNA sequence, cloning, and expression of a novel human intracellular membrane-associated calcium-independent phospholipase A(2). *J Biol Chem*, Vol. 275, No. 14, pp.9937-9945.
- Mancuso, D. J., Jenkins, C. M., Sims, H. F., Cohen, J. M., Yang, J., & Gross, R. W. (2004). Complex transcriptional and translational regulation of iPLA₂gamma resulting in multiple gene products containing dual competing sites for mitochondrial or peroxisomal localization. *Eur J Biochem*, Vol. 271, No. 23-24, pp.4709-4724.
- Martel, M. A., Patenaude, C., Menard, C., Alaux, S., Cummings, B. S., & Massicotte, G. (2006). A novel role for calcium-independent phospholipase A in alpha-amino-3-hydroxy-5-methylisoxazole-propionate receptor regulation during long-term potentiation. *Eur J Neurosci*, Vol. 23, No. 2, pp.505-513.
- Menard, C., Chartier, E., Patenaude, C., Robinson, P., Cyr, M., Baudry, M., et al. (2007). Calcium-independent phospholipase A(2) influences AMPA-mediated toxicity of hippocampal slices by regulating the GluR1 subunit in synaptic membranes. *Hippocampus*, Vol. 17, No. 11, pp.1109-1120.
- Menard, C., Patenaude, C., Gagne, A. M., & Massicotte, G. (2009). AMPA receptor-mediated cell death is reduced by docosahexaenoic acid but not by eicosapentaenoic acid in area CA1 of hippocampal slice cultures. *J Neurosci Res*, Vol. 87, No. 4, pp.876-886.
- Menard, C., Patenaude, C., & Massicotte, G. (2005). Phosphorylation of AMPA receptor subunits is differentially regulated by phospholipase A₂ inhibitors. *Neurosci Lett*, Vol. 389, No. 1, pp.51-56.
- Mendes, C. T., Gattaz, W. F., Schaeffer, E. L., & Forlenza, O. V. (2005). Modulation of phospholipase A₂ activity in primary cultures of rat cortical neurons. *J Neural Transm*, Vol. 112, No. 10, pp.1297-1308.
- Morgan, N. V., Westaway, S. K., Morton, J. E., Gregory, A., Gissen, P., Sonek, S., et al. (2006). PLA2G6, encoding a phospholipase A₂, is mutated in neurodegenerative disorders with high brain iron. *Nat Genet*, Vol. 38, No. 7, pp.752-754.
- Murakami, M., Masuda, S., Ueda-Semmyo, K., Yoda, E., Kuwata, H., Takanezawa, Y., et al. (2005). Group VIB Ca²⁺-independent phospholipase A₂gamma promotes cellular membrane hydrolysis and prostaglandin production in a manner distinct from other intracellular phospholipases A₂. *J Biol Chem*, Vol. 280, No. 14, pp.14028-14041.
- Oksman, M., Iivonen, H., Högges, E., Amtul, Z., Penke, B., Leenders, I., et al. (2006). Impact of different saturated fatty acid, polyunsaturated fatty acid and cholesterol containing diets on beta-amyloid accumulation in APP/PS1 transgenic mice. *Neurobiol Dis*, Vol. 23, No. 3, pp.563-572.
- Palop, J. J., Chin, J., & Mucke, L. (2006). A network dysfunction perspective on neurodegenerative diseases. *Nature*, Vol. 443, No. 7113, pp.768-773.
- Pechoux, C., Boisgard, R., Chanut, E., & Lavialle, F. (2005). Ca(2+)-independent phospholipase A₂ participates in the vesicular transport of milk proteins. *Biochim Biophys Acta*, Vol. 1743, No. 3, pp.317-329.

- Perez, R., Melero, R., Balboa, M. A., & Balsinde, J. (2004). Role of group VIA calcium-independent phospholipase A2 in arachidonic acid release, phospholipid fatty acid incorporation, and apoptosis in U937 cells responding to hydrogen peroxide. *J Biol Chem*, Vol. 279, No. 39, pp.40385-40391.
- Peterson, B., Knotts, T., & Cummings, B. S. (2007). Involvement of Ca²⁺-independent phospholipase A2 isoforms in oxidant-induced neural cell death. *Neurotoxicology*, Vol. 28, No. 1, pp.150-160.
- Phillis, J. W., & O'Regan, M. H. (2004). A potentially critical role of phospholipases in central nervous system ischemic, traumatic, and neurodegenerative disorders. *Brain Res Brain Res Rev*, Vol. 44, No. 1, pp.13-47.
- Pickard, L., Noel, J., Duckworth, J. K., Fitzjohn, S. M., Henley, J. M., Collingridge, G. L., et al. (2001). Transient synaptic activation of NMDA receptors leads to the insertion of native AMPA receptors at hippocampal neuronal plasma membranes. *Neuropharmacology*, Vol. 41, No. 6, pp.700-713.
- Quistad, G. B., Barlow, C., Winrow, C. J., Sparks, S. E., & Casida, J. E. (2003). Evidence that mouse brain neuropathy target esterase is a lysophospholipase. *Proc Natl Acad Sci U S A*, Vol. 100, No. 13, pp.7983-7987.
- Ramanadham, S., Hsu, F. F., Zhang, S., Jin, C., Bohrer, A., Song, H., et al. (2004). Apoptosis of insulin-secreting cells induced by endoplasmic reticulum stress is amplified by overexpression of group VIA calcium-independent phospholipase A2 (iPLA2 beta) and suppressed by inhibition of iPLA2 beta. *Biochemistry*, Vol. 43, No. 4, pp.918-930.
- Ross, B. M., Hughes, B., Kish, S. J., & Warsh, J. J. (2006). Serum calcium-independent phospholipase A2 activity in bipolar affective disorder. *Bipolar Disord*, Vol. 8, No. 3, pp.265-270.
- Ross, B. M., Turenne, S., Moszczynska, A., Warsh, J. J., & Kish, S. J. (1999). Differential alteration of phospholipase A2 activities in brain of patients with schizophrenia. *Brain Res*, Vol. 821, No. 2, pp.407-413.
- Sanchez-Mejia, R. O., Newman, J. W., Toh, S., Yu, G. Q., Zhou, Y., Halabisky, B., et al. (2008). Phospholipase A2 reduction ameliorates cognitive deficits in a mouse model of Alzheimer's disease. *Nat Neurosci*, Vol. 11, No. 11, pp.1311-1318.
- Schaeffer, E. L., & Gattaz, W. F. (2005). Inhibition of calcium-independent phospholipase A2 activity in rat hippocampus impairs acquisition of short- and long-term memory. *Psychopharmacology (Berl)*, Vol. 181, No. 2, pp.392-400.
- Schaeffer, E. L., & Gattaz, W. F. (2007). Requirement of hippocampal phospholipase A2 activity for long-term memory retrieval in rats. *J Neural Transm*, Vol. 114, No. 3, pp.379-385.
- Schaloske, R. H., & Dennis, E. A. (2006). The phospholipase A2 superfamily and its group numbering system. *Biochim Biophys Acta*, Vol. 1761, No. 11, pp.1246-1259.
- Seleznev, K., Zhao, C., Zhang, X. H., Song, K., & Ma, Z. A. (2006). Calcium-independent phospholipase A2 localizes in and protects mitochondria during apoptotic induction by staurosporine. *J Biol Chem*, Vol. 281, No. 31, pp.22275-22288.
- Shinzawa, K., Sumi, H., Ikawa, M., Matsuoka, Y., Okabe, M., Sakoda, S., et al. (2008). Neuroaxonal dystrophy caused by group VIA phospholipase A2 deficiency in mice: a model of human neurodegenerative disease. *J Neurosci*, Vol. 28, No. 9, pp.2212-2220.
- Smani, T., Zakharov, S. I., Csutora, P., Leno, E., Trepakova, E. S., & Bolotina, V. M. (2004). A novel mechanism for the store-operated calcium influx pathway. *Nat Cell Biol*, Vol. 6, No. 2, pp.113-120.

- Sommer, B., Kohler, M., Sprengel, R., & Seeburg, P. H. (1991). RNA editing in brain controls a determinant of ion flow in glutamate-gated channels. *Cell*, Vol. 67, No. 1, pp.11-19.
- Stellwagen, D., Beattie, E. C., Seo, J. Y., & Malenka, R. C. (2005). Differential regulation of AMPA receptor and GABA receptor trafficking by tumor necrosis factor- α . *J Neurosci*, Vol. 25, No. 12, pp.3219-3228.
- Strokin, M., Chechneva, O., Reymann, K. G., & Reiser, G. (2006). Neuroprotection of rat hippocampal slices exposed to oxygen-glucose deprivation by enrichment with docosahexaenoic acid and by inhibition of hydrolysis of docosahexaenoic acid-containing phospholipids by calcium independent phospholipase A₂. *Neuroscience*, Vol. 140, No. 2, pp.547-553.
- Strokin, M., Sergeeva, M., & Reiser, G. (2003). Docosahexaenoic acid and arachidonic acid release in rat brain astrocytes is mediated by two separate isoforms of phospholipase A₂ and is differently regulated by cyclic AMP and Ca²⁺. *Br J Pharmacol*, Vol. 139, No. 5, pp.1014-1022.
- Strokin, M., Sergeeva, M., & Reiser, G. (2007). Prostaglandin synthesis in rat brain astrocytes is under the control of the n-3 docosahexaenoic acid, released by group VIB calcium-independent phospholipase A₂. *J Neurochem*, Vol. 102, No. 6, pp.1771-1782.
- Sun, G. Y., Xu, J., Jensen, M. D., & Simonyi, A. (2004). Phospholipase A₂ in the central nervous system: implications for neurodegenerative diseases. *J Lipid Res*, Vol. 45, No. 2, pp.205-213.
- Sun, G. Y., Xu, J., Jensen, M. D., Yu, S., Wood, W. G., Gonzalez, F. A., et al. (2005). Phospholipase A₂ in astrocytes: responses to oxidative stress, inflammation, and G protein-coupled receptor agonists. *Mol Neurobiol*, Vol. 31, No. 1-3, pp.27-41.
- Takeuchi, T., Fukumoto, Y., & Harada, E. (2002). Influence of a dietary n-3 fatty acid deficiency on the cerebral catecholamine contents, EEG and learning ability in rat. *Behav Brain Res*, Vol. 131, No. 1-2, pp.193-203.
- Takuma, T., & Ichida, T. (1997). Role of Ca²⁺-independent phospholipase A₂ in exocytosis of amylase from parotid acinar cells. *J Biochem*, Vol. 121, No. 6, pp.1018-1024.
- Talbot, K., Young, R. A., Jolly-Tornetta, C., Lee, V. M., Trojanowski, J. Q., & Wolf, B. A. (2000). A frontal variant of Alzheimer's disease exhibits decreased calcium-independent phospholipase A₂ activity in the prefrontal cortex. *Neurochem Int*, Vol. 37, No. 1, pp.17-31.
- Tanaka, H., Takeya, R., & Sumimoto, H. (2000). A novel intracellular membrane-bound calcium-independent phospholipase A(2). *Biochem Biophys Res Commun*, Vol. 272, No. 2, pp.320-326.
- Tang, J., Kriz, R. W., Wolfman, N., Shaffer, M., Seehra, J., & Jones, S. S. (1997). A novel cytosolic calcium-independent phospholipase A₂ contains eight ankyrin motifs. *J Biol Chem*, Vol. 272, No. 13, pp.8567-8575.
- Tay, H. K., & Melendez, A. J. (2004). Fc γ RI-triggered generation of arachidonic acid and eicosanoids requires iPLA₂ but not cPLA₂ in human monocytic cells. *J Biol Chem*, Vol. 279, No. 21, pp.22505-22513.
- Thiagarajan, T. C., Lindskog, M., & Tsien, R. W. (2005). Adaptation to synaptic inactivity in hippocampal neurons. *Neuron*, Vol. 47, No. 5, pp.725-737.
- Underwood, K. W., Song, C., Kriz, R. W., Chang, X. J., Knopf, J. L., & Lin, L. L. (1998). A novel calcium-independent phospholipase A₂, cPLA₂- γ , that is prenylated and contains homology to cPLA₂. *J Biol Chem*, Vol. 273, No. 34, pp.21926-21932.

- Uozumi, N., Kume, K., Nagase, T., Nakatani, N., Ishii, S., Tashiro, F., et al. (1997). Role of cytosolic phospholipase A2 in allergic response and parturition. *Nature*, Vol. 390, No. 6660, pp.618-622.
- Villmann, C., & Becker, C. M. (2007). On the hypes and falls in neuroprotection: targeting the NMDA receptor. *Neuroscientist*, Vol. 13, No. 6, pp.594-615.
- Wang, X., Zhao, X., Mao, Z. Y., Wang, X. M., & Liu, Z. L. (2003). Neuroprotective effect of docosahexaenoic acid on glutamate-induced cytotoxicity in rat hippocampal cultures. *Neuroreport*, Vol. 14, No. 18, pp.2457-2461.
- Wiedholz, L. M., Owens, W. A., Horton, R. E., Feyder, M., Karlsson, R. M., Hefner, K., et al. (2008). Mice lacking the AMPA GluR1 receptor exhibit striatal hyperdopaminergia and 'schizophrenia-related' behaviors. *Mol Psychiatry*, Vol. 13, No. 6, pp.631-640.
- Williams, J. H., Errington, M. L., Lynch, M. A., & Bliss, T. V. (1989). Arachidonic acid induces a long-term activity-dependent enhancement of synaptic transmission in the hippocampus. *Nature*, Vol. 341, No. 6244, pp.739-742.
- Williams, S. D., & Gottlieb, R. A. (2002). Inhibition of mitochondrial calcium-independent phospholipase A2 (iPLA2) attenuates mitochondrial phospholipid loss and is cardioprotective. *Biochem J*, Vol. 362, No. Pt 1, pp.23-32.
- Wolf, M. J., Izumi, Y., Zorumski, C. F., & Gross, R. W. (1995). Long-term potentiation requires activation of calcium-independent phospholipase A2. *FEBS Lett*, Vol. 377, No. 3, pp.358-362.
- Wu, A., Ying, Z., & Gomez-Pinilla, F. (2004). Dietary omega-3 fatty acids normalize BDNF levels, reduce oxidative damage, and counteract learning disability after traumatic brain injury in rats. *J Neurotrauma*, Vol. 21, No. 10, pp.1457-1467.
- Xie, X., Liaw, J. S., Baudry, M., & Berger, T. W. (1997). Novel expression mechanism for synaptic potentiation: alignment of presynaptic release site and postsynaptic receptor. *Proc Natl Acad Sci U S A*, Vol. 94, No. 13, pp.6983-6988.
- Xu, J., Yu, S., Sun, A. Y., & Sun, G. Y. (2003). Oxidant-mediated AA release from astrocytes involves cPLA(2) and iPLA(2). *Free Radic Biol Med*, Vol. 34, No. 12, pp.1531-1543.
- Yan, W., Jenkins, C. M., Han, X., Mancuso, D. J., Sims, H. F., Yang, K., et al. (2005). The highly selective production of 2-arachidonoyl lysophosphatidylcholine catalyzed by purified calcium-independent phospholipase A2gamma: identification of a novel enzymatic mediator for the generation of a key branch point intermediate in eicosanoid signaling. *J Biol Chem*, Vol. 280, No. 29, pp.26669-26679.
- Yang, H. C., Mosior, M., Ni, B., & Dennis, E. A. (1999). Regional distribution, ontogeny, purification, and characterization of the Ca²⁺-independent phospholipase A2 from rat brain. *J Neurochem*, Vol. 73, No. 3, pp.1278-1287.
- Yang, J., Han, X., & Gross, R. W. (2003). Identification of hepatic peroxisomal phospholipase A(2) and characterization of arachidonic acid-containing choline glycerophospholipids in hepatic peroxisomes. *FEBS Lett*, Vol. 546, No. 2-3, pp.247-250.
- Yavin, E., Brand, A., & Green, P. (2002). Docosahexaenoic acid abundance in the brain: a biodevice to combat oxidative stress. *Nutr Neurosci*, Vol. 5, No. 3, pp.149-157.
- Youdim, K. A., Martin, A., & Joseph, J. A. (2000). Essential fatty acids and the brain: possible health implications. *Int J Dev Neurosci*, Vol. 18, No. 4-5, pp.383-399.
- Zhu, D., Lai, Y., Shelat, P. B., Hu, C., Sun, G. Y., & Lee, J. C. (2006). Phospholipases A2 mediate amyloid-beta peptide-induced mitochondrial dysfunction. *J Neurosci*, Vol. 26, No. 43, pp.11111-11119.



Neurodegenerative Diseases - Processes, Prevention, Protection and Monitoring

Edited by Dr Raymond Chuen-Chung Chang

ISBN 978-953-307-485-6

Hard cover, 558 pages

Publisher InTech

Published online 09, December, 2011

Published in print edition December, 2011

Neurodegenerative Diseases - Processes, Prevention, Protection and Monitoring focuses on biological mechanisms, prevention, neuroprotection and even monitoring of disease progression. This book emphasizes the general biological processes of neurodegeneration in different neurodegenerative diseases. Although the primary etiology for different neurodegenerative diseases is different, there is a high level of similarity in the disease processes. The first three sections introduce how toxic proteins, intracellular calcium and oxidative stress affect different biological signaling pathways or molecular machineries to inform neurons to undergo degeneration. A section discusses how neighboring glial cells modulate or promote neurodegeneration. In the next section an evaluation is given of how hormonal and metabolic control modulate disease progression, which is followed by a section exploring some preventive methods using natural products and new pharmacological targets. We also explore how medical devices facilitate patient monitoring. This book is suitable for different readers: college students can use it as a textbook; researchers in academic institutions and pharmaceutical companies can take it as updated research information; health care professionals can take it as a reference book, even patients' families, relatives and friends can take it as a good basis to understand neurodegenerative diseases.

How to reference

In order to correctly reference this scholarly work, feel free to copy and paste the following:

Julie Allyson and Guy Massicotte (2011). Neuropathological Disorders and Calcium Independent Forms of Phospholipase A2 Activities in the Brain, Neurodegenerative Diseases - Processes, Prevention, Protection and Monitoring, Dr Raymond Chuen-Chung Chang (Ed.), ISBN: 978-953-307-485-6, InTech, Available from: <http://www.intechopen.com/books/neurodegenerative-diseases-processes-prevention-protection-and-monitoring/neuropathological-disorders-and-calcium-independent-forms-of-phospholipase-a2-activities-in-the-brai>

INTECH
open science | open minds

InTech Europe

University Campus STeP Ri
Slavka Krautzeka 83/A
51000 Rijeka, Croatia
Phone: +385 (51) 770 447

InTech China

Unit 405, Office Block, Hotel Equatorial Shanghai
No.65, Yan An Road (West), Shanghai, 200040, China
中国上海市延安西路65号上海国际贵都大饭店办公楼405单元
Phone: +86-21-62489820

Fax: +385 (51) 686 166
www.intechopen.com

Fax: +86-21-62489821

© 2011 The Author(s). Licensee IntechOpen. This is an open access article distributed under the terms of the [Creative Commons Attribution 3.0 License](#), which permits unrestricted use, distribution, and reproduction in any medium, provided the original work is properly cited.