

Myogenic Differentiation of ES Cells for Therapies in Neuromuscular Diseases: Progress to Date

Camila F. Almeida, Danielle Ayub-Guerrieri
and Mariz Vainzof

*University of São Paulo, Human Genome Research Center
Brazil*

1. Introduction

The neuromuscular disorders are a heterogeneous group of genetic diseases characterized by progressive degeneration and impaired regeneration of skeletal muscle, resulting in weakness. The mobility of patients is very reduced, leading, depending on the disease severity, to wheelchair dependency and reduced life expectancy and quality.

Currently there are no proven treatments for these diseases, except for palliative measures to improve a patient's quality of life. Nevertheless, cell therapy using embryonic or somatic stem cells is considered to offer the best potential for success, and many projects are now being undertaken to evaluate the therapeutic possibilities of this approach.

Theoretically, due to their pluripotency, embryonic stem cells can give rise to any type of tissue, and raises the possibility of successfully treating many diseases. However, a simple injection of ES cells into various body locations in model organisms often leads to formation of undesirable teratomas and not to healthy new tissues. Accordingly, ES cells must be partially differentiated and selected prior to injection to increase the likelihood of implantation and growth of tissue exhibiting differentiation of the desired type.

Although some modest advances have been achieved, to date the use of ES cells for therapy of neuromuscular disorders still remains a distant goal. In this review we mainly consider the role of embryonic stem cells in neuromuscular therapeutic approaches.

2. Muscular dystrophies

The neuromuscular disorders form a heterogeneous group of genetic diseases characterized by progressive loss of muscular strength caused by defects in or absence of muscle proteins and also to imbalance between rates of tissue degeneration and regeneration. There is great clinical variability, ranging from extremely mild to severe forms (Emery, 2002).

More than 30 genetically defined forms are recognized, and in the last decade, mutations in several genes coding for the sarcolemmal, sarcomeric, cytosolic or nuclear muscle proteins have been reported. Deficiencies or loss of function of these proteins leads to variable degrees of progressive muscle degeneration, which in turn results in progressive loss of motor ability (Vainzof et al., 2003). The principle proteins involved occupy specific niches in muscle cells: dystrophin (*Dmd*), sarcoglycan (*Sgca*) and dysferlin (*Dysf*) are sarcolemmal or peri-sarcolemmal proteins; laminin alpha 2 (*Lama2*) and collagen type VI (*Col6*) are

extracellular matrix proteins; telethonin (Tcap) and actin alpha 1 (*Acta1*) are sarcomeric proteins; calpain 3 (*Capn3*) and FKRP (Fkrp) are cytosolic enzymes; and emerin (Emd) and lamin A/C (*Lmna/c*) are nuclear proteins (Figure 1).

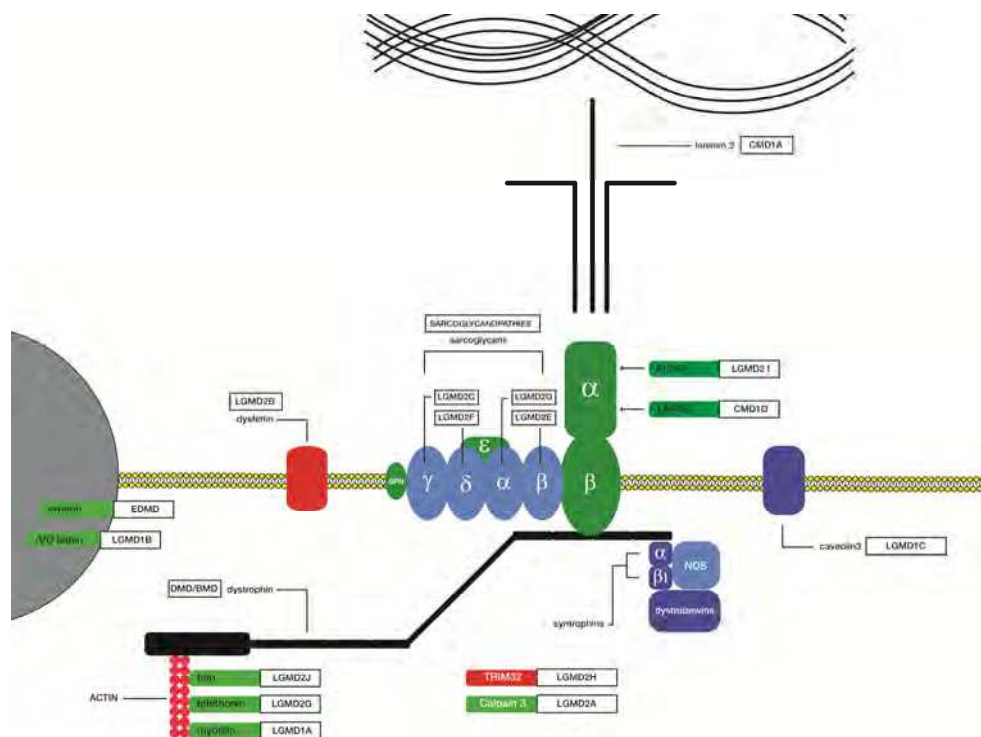


Fig. 1. Schematic representation of proteins involved in the process of muscle degeneration in neuromuscular disorders, localized at the sarcolemma, the sarcomere, the cytosol and the nucleus. The boxes contain the disease name associated with the protein. LGMD – limb-girdle muscular dystrophy; EDMD- Emery-Dreifuss muscular dystrophy; FKRP – fukutin-related protein; NOS – nitric oxide synthase.

Defects in components of the dystrophin-glycoprotein complex (DGC) are known to be an important cause of different forms of muscular dystrophies (Ervasti & Campbell, 1993; Yoshida & Ozawa, 1990). The DGC is an oligomeric complex connecting the subsarcolemmal cytoskeleton to the extracellular matrix. The DGC consists of dystroglycan (α - and β -DG), sarcoglycan (α , β -, γ -, δ - and ϵ -SG) and syntrophin/dystrobrevin sub-complexes. The intracellular link of the DGC is the protein dystrophin that plays an important structural role in muscle fibers. Mutations in the dystrophin gene cause the most common form of neuromuscular disorder, namely X-linked Duchenne muscular dystrophy (DMD) (Hoffman et al., 1987) with a frequency of 1 in 3000 males in most populations studied. Further, this disease epitomises the severe need for efficient treatment modalities, since 1/3rd of all patients arise from new mutations and the disease frequency can never be modulated efficiently by genetic counselling approaches.

Mutations in the genes coding the four SG proteins cause severe forms of limb-girdle muscular dystrophies type LGMD2D, 2E, 2C and 2F. The peripheral membrane glycoprotein α -DG, a receptor for the heterotrimeric basement membrane protein laminin-2, binds to β -DG and so completes the connection from the inside to the outside of the cell (Straub and Campbell, 1997). Mutations in the *Lama2* gene, encoding the α 2 chain of laminin-2, cause α 2-laminin deficiency, and a severe form of congenital muscular dystrophy (CMD1A) linked to human chromosome 6q (Tomé et al., 1994). In addition, some forms of muscular dystrophy have recently been associated with genes encoding putative or known glycosyltransferases. Muscle protein analysis in these patients shows a hypoglycosylation of α -dystroglycan and a consequent reduction of numerous ligands components of the extracellular matrix, such as laminin 2 (Muntoni et al., 2004). Other milder forms of muscular dystrophy are caused by mutations in genes coding the enzyme calpain 3 (*Capn3*), the sarcolemmal protein dysferlin (*Dysf*), and the sarcomeric protein telethonin (*Tcap*) (Vainzof & Zatz, 2003).

2.1 Animal models for neuromuscular diseases

Several animal models, manifesting phenotypes observed in neuromuscular diseases have been identified in nature or generated in laboratory. These models generally present physiological alterations observed in human patients, and can be used as important tools for genetic, clinical and histopathological studies (Vainzof et al., 2008).

The *mdx* mouse is the most widely used animal model for Duchenne muscular dystrophy (DMD) (Bulfield et al., 1984). Although it is a good genetic and biochemical model, presenting total deficiency of dystrophin in muscle, this mouse is not useful for clinical comparisons, because of its very mild phenotype. The canine golden retriever MD model presents a more clinically relevant model for DMD in humans due to the much larger size of the animals, significant muscle weakness progression and premature lethality.

Models for autosomal recessive limb-girdle MD include the *SJL/J* mice that develop spontaneous myopathy resulting from a mutation in the Dysferlin gene, which is a specific model for LGMD2B (Bittner et al., 1999). For the human sarcoglycanopathies (SG), the BIO14.6 hamster is the spontaneous animal model for δ -SG deficiency, while some canine models with deficiency of SG proteins have also been identified (Straub et al., 1998). More recently, using homologous recombination in embryonic stem cells, several mouse models have been developed with null mutations in each one of the four SG genes. All sarcoglycan-null animals display a progressive muscular dystrophy of variable severity, and share the property of a significant secondary reduction in the expression of the other members of the sarcoglycan subcomplex, and other components of the Dystrophin-glycoprotein complex.

Mouse models for congenital MD include the *dy/dy* (dystrophia-muscularis) mouse, and the allelic mutant *dy2/dy2* mouse, both presenting a significant reduction of α 2-laminin in the muscle and a severe phenotype. The myodystrophy mouse (*Largemyd*), harbors a mutation in the glycosyltransferase Large, which leads to altered glycosylation of α -DG, and a severe phenotype (Grewal et al., 2001).

Other informative models for muscle proteins include the knockout mouse for myostatin, demonstrating that this protein is a negative regulator of muscle growth (Patel & Amthor, 2005). Additionally, the stress syndrome in pigs, caused by mutations in the porcine *Ryr1* gene, helped to localize the gene causing malignant hyperthermia and Central Core myopathy in humans (Yang et al., 2006).

The study of animal models for genetic neuromuscular diseases, in spite of some differences with their equivalent human disease phenotypes, can provide important clues to understanding the pathogenesis of these disorders in humans and are also very valuable for testing strategies for cellular therapeutic approaches.

3. Muscle development

Activating key genes in a sequence similar to that occurring in the normal organism is a reasonable approach to obtain differentiated muscle cells *in vitro*. This depends on understanding the gene pathways leading to myogenic differentiation.

Skeletal muscle development can be divided into a number of principal stages: determination of the cell fate (myoblast formation); myoblasts proliferation; alignment and fusion of myoblasts; formation of myotubes; maturation of myotubes and muscle fibre formation (Figure 2). Different molecular factors regulate each step in a particular and very ordered manner.

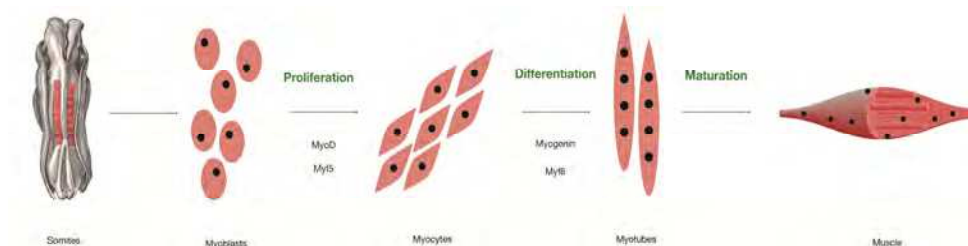


Fig. 2. Schematic of the myogenic cascade

3.1 Anatomy of embryonic myogenesis – Myotome formation

The majority of skeletal myogenic progenitors arise from somites, which are transitory condensations of paraxial mesoderm on either side of the neural tube and notochord. As the maturation of somites progresses, myogenic progenitor cells are confined to the epithelium of the dermomyotome, which give rise to the dermis and the skeletal muscle of the trunk and limbs (Buckingham, 2006).

The dermomyotome is subdivided into the hypaxial dermomyotome – the source of the lateral trunk muscles and limb muscles – and the epaxial dermomyotome – the source of the deep back musculature (Parker et al., 2003). In this structure, it is possible to distinguish two lips: the hypaxial and epaxial lips, from which cells delaminate and migrate under the dermomyotome, forming the myotome, an intermediate structure (Buckingham, 2001) (Figure 3).

3.2 Molecular markers and regulatory factors

Pax3 and *Pax7* are markers for cells derived from the dermomyotome and recently formed muscle masses. *Pax3* expression is involved in progenitor muscle cell formation and is essential for the definition and migration of these cells to their proper location in the body. *Pax3* acts mainly during embryogenesis, while *Pax7* is more important in adult myogenesis.

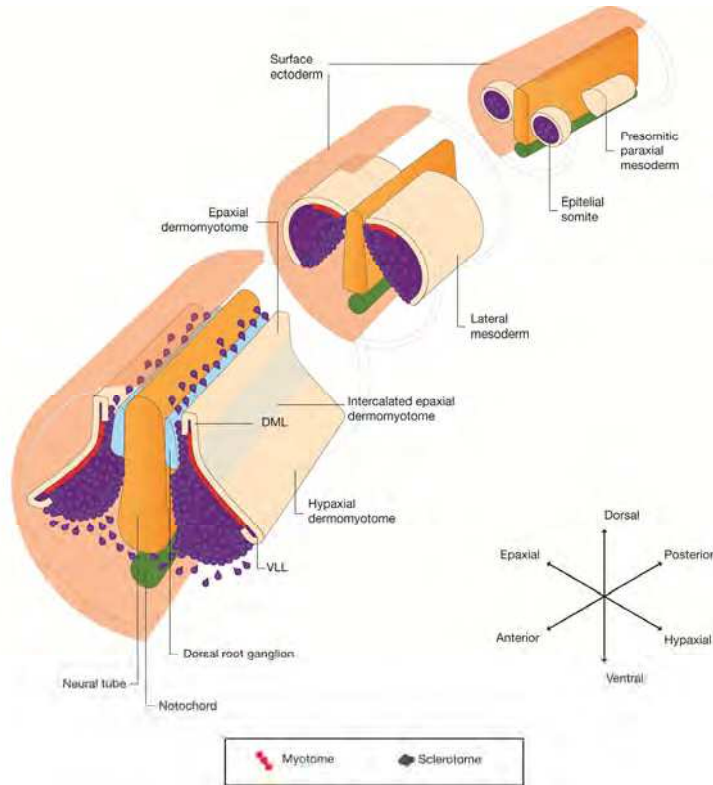


Fig. 3. The origin of different muscles in the embryo. VLL – ventral lateral lip. DML – dorsal medial lip. (Adapted from Buckingham, 2001).

The induction of myogenesis in the cells of somites is conducted by factors secreted by the notochord and neural tube: various members of the *Wnt* family and *Shh*, are responsible for the activation of MRFs (myogenic regulatory factors). Expression of *Ctnnb1* (β -catenin) dependent *Wnt6* signalling is important for the maintenance of the epithelial structure of the dermomyotome that is essential for the ordered progression of myogenesis. In epaxial muscle, *Wnt* family members are involved in *Myf5* and *MyoD* regulation through a complex cascade of gene regulation that includes the action of *Shh* as a positive regulator of *Myf5* (Parker et al., 2003) (Figure 4 A).

The MRFs concerned are *MyoD*, *Myf5*, myogenin and *Myf6* (*Mrf4*) and each one has a defined role in regulating skeletal muscle development and differentiation, directing the expression of genes responsible for the formation of the contractile machinery of the muscle (Bryson-Richardson & Currie, 2008). All have a homologous bHLH domain, required for DNA binding and dimerization with transcription factors of the E-protein family. The complexes of MRF-E proteins bind to a specific consensus sequence found in the promoters of many muscle-specific genes.

In hypaxial muscle, the MRFs are up-regulated by *Pax3*, which in turn, is regulated by family members of the sine oculis homeobox (*Six*) and eyes absent (*Eya*) genes (Bryson-Richardson & Currie, 2008) (Figure 4 B).

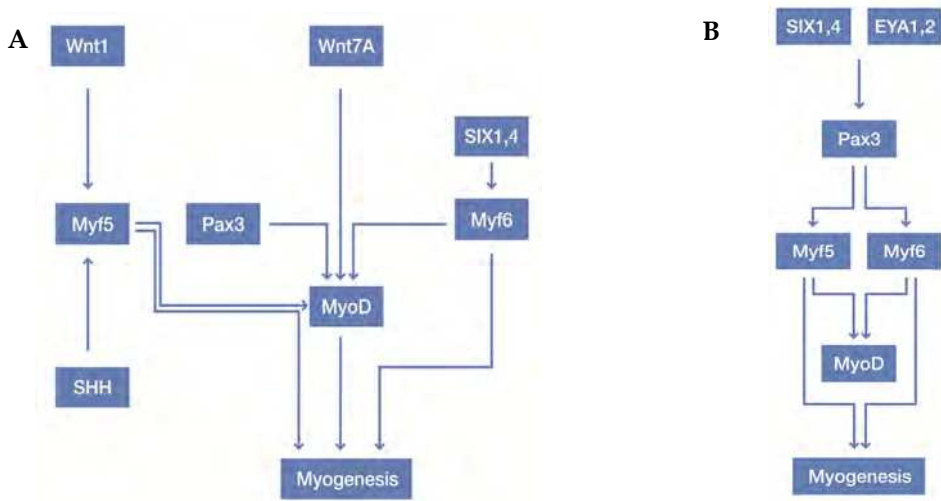


Fig. 4. Gene regulatory networks in A- epaxial muscle (left) and in B- hypaxial muscle (right).

Another important family of transcription factors is the myocyte enhancer factor-2 (*Mef2*), also involved in the expression of many muscle-protein genes in mouse (Naya & Olson, 1999). The *Mef2* family acts in conjunction with MRFs, especially *Myf6* and *Myog* (myogenin), to coordinate myoblast terminal differentiation.

3.3 Myogenesis in the adult – muscle regeneration

The cells responsible for regeneration in adult muscle are the satellite cells, localized under the basal lamina of muscle fibers. The satellite cells are partially undifferentiated myogenic precursor cells capable of both self-renew and differentiation into new myogenic cells (Relaix & Marcelle, 2009).

In response to injury, and under the stimulus of several myogenic factors, these cells are activated, start to proliferate and differentiate, fuse to pre-existing fibers (hypertrophy), or generate new fibers (hyperplasia) in a process recapitulating muscle development (Hawke & Garry, 2001). Myogenic determinants involve the components of the family of transcription factors called muscle regulatory factors (MRFs), include: a) *Myf5* and *MyoD1*, responsible for muscle-cell type determination and satellite-cells activation; b) *Myf6* (also called *Mrf4*) and *Myog*, responsible for muscle differentiation (Brand-Saberi & Christ, 1999).

In addition to satellite cells, there are other cell types that contribute to muscle regeneration: bone-marrow derived cells (Ferrari et al., 1998), muscle side-population cells (Gussoni et al., 1999), CD34⁺/Sca1⁺ cells (Torrente et al., 2001; Lee et al., 2000) and cells of vascular origin (Figure 5).

The regenerative capacity of the satellite cells, however, is finite, and the exhaustion of the pool of precursor cells is an important factor contributing to the progressive muscle deterioration observed in human and murine muscular dystrophy. In fact, the exhaustion of satellite cells is the primary cause of onset of symptoms in Duchenne muscular dystrophy.

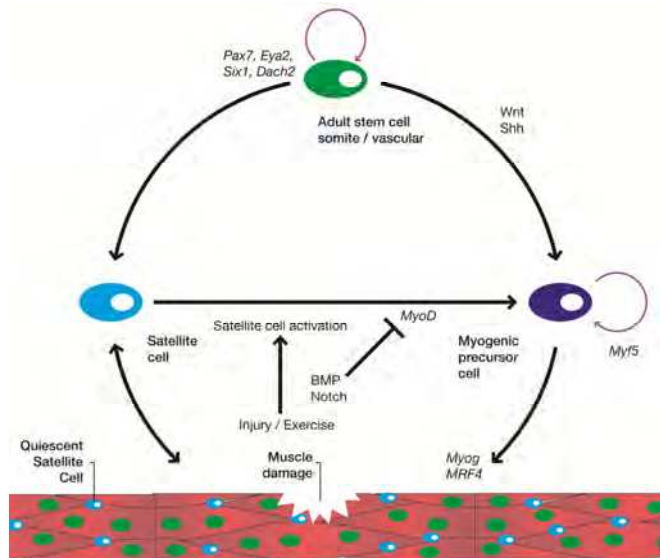


Fig. 5. Adult myogenesis and precursors cell types. Adapted from Parker et al., 2003.

Thus, cell therapies for muscular dystrophies can also focus on the re-establishment of the muscle’s satellite cell pool, which reduces rapidly when there are excessive cycles of degeneration and regeneration.

4. ES cells in myogenic differentiation

Any attempt to direct the differentiation of ES cells must be designed so that the majority of cells will start to differentiate, as far as possible, simultaneously into the desired cell type with avoidance of teratoma formation caused by non-committed pluripotent stem cells. Induction of appropriate myogenesis is a relatively difficult task given the unique architecture of muscle tissue.

There are three main potential approaches to directed differentiation of ES cells into muscle: the use of muscle specific growth and differentiation factors, genetic modifications and use of genetically modified feeder cells (Grivennikov, 2008). The first two have already been tested for myogenic induction, but to date, there are no reports on the use of modified feeder cells for this purpose.

For the differentiation of ES cells into different cell lineages, the cells must be cultivated in aggregates called embryoid bodies (EBs) by the hanging drop method (Figure 6), in which the 3-dimensional structure of the embryoid bodies, in combination with application of growth factors favouring myogenesis, encourages the stem cells to differentiate into myoblasts. The ES cells are first cultivated in drops of medium containing an exact number of cells leading to formation of EBs within 2 days, following which, the EBs are transferred into suspension cultures for some additional days resulting in adhesion of the EBs onto the bottom of tissue culture plates. The medium for EB cultivation is changed for one supporting myogenic differentiation at the time of EB adhesion. Studies suggest that the EBs need to be cultivated for five days in the suspension phase to obtain maximal differentiation into skeletal muscle cells.

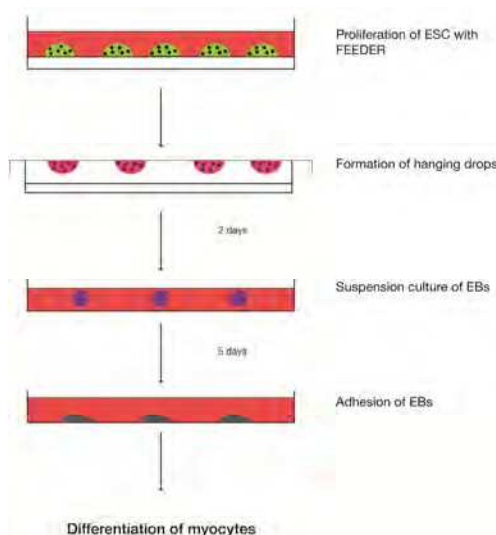


Fig. 6. Hanging drop method

4.1 *In vitro* induction of myogenesis

The use of chemical compounds to induce differentiation is a quite simple approach based on media supplementation. In some cases, different cell types can be obtained from the same compound according to the substance's concentration. For instance, 1 μ M retinoic acid causes neuronal differentiation, while 25nM retinoic acid enhances skeletal myogenesis (Kennedy et al., 2009).

One of the first reports of myogenic differentiation of ES cells was reported by Rohwedel et al. (1994), based on protocols developed by Wobus et al. in 1988 (2002), which depend on a prior differentiation in embryoid bodies followed by a posterior treatment with 1% DMSO (dimethylsulfoxide) or 10⁻⁸M retinoic acid. The myogenic cells obtained in this work were identified as myoblasts and myotubes by hematoxylin-eosin staining. The first myosin-positive and desmin-positive skeletal muscle cells appeared four days after EB adhesion. Myogenin-positive myocytes were identified after six days and fusion into myotubes on the seventh day. Neuronal cells also appeared mostly before the differentiation of skeletal muscle cells, which reached a maximum in nine days. However, some EB outgrowths containing ES cells, which decreased with prolonged time of differentiation. Using RT-PCR the authors detected expression of the myogenic regulatory factors myogenin, *Myf5*, *Myf6* and *MyoD1*, indicating that ES myogenic differentiation *in vitro* resembles myogenesis *in vivo* (Rohwedel et al., 1994).

Retinoic acid (RA) is a derivative of vitamin A and has different roles in various processes in embryonic development and regulates the expression of several hundreds of genes (Blomhoff & Blomhoff, 2006), including MRFs. In stem cells and myoblast cell lines, RA enhances skeletal myogenesis at low concentrations (Edwards & McBurney, 1983; Halevy & Lerman, 1993; Albagli-Curiel et al., 1993, as cited in Kennedy et al., 2009). In the work of Kennedy et al. (2009), mouse ES cells and P19 cells (pluripotent embryonal carcinoma cells) were differentiated with various RA concentrations, ranging from zero to 50 nM and 1%DMSO, that promotes skeletal myogenesis, but not cardiogenesis. They detected

increasing transcript levels of *Meox1*, *Pax3* and *Myod1* (all skeletal muscle markers) in the presence of various concentrations of RA by RT-PCR and showed that transcription peaked at a concentration of 25nM.

Prelle et al. (2000) overexpressed the *Igf2* gene (*insulin-like growth factor 2*) in mouse embryonic stem cells to evaluate this protein as a stimulator of myogenesis. *Igf2* was identified as an autocrine differentiation factor in myoblasts (Stewart et al., 1996, as cited in Prelle et al., 2000). It is also a survival factor during the transition from proliferation to differentiation in myoblasts and overexpression of *Igf2* in myoblasts results in enhanced differentiation characterized by accelerated expression of myogenin mRNA and extensive myotube formation (Stewart & Rotwein, 1996, as cited in Prelle et al., 2000). Embryoid bodies were formed by overexpression of *Igf2* in ES cells and myocytes were observed three days after adhesion, with myotube formation four days later and commencement of myotube contraction after ten days. They also detected the expression of the myogenic proteins titin and sarcomeric *Myhc* (myosin heavy chain). On the last day of differentiation (day 23), the large contracting myotubes showed a regular sarcomeric organization of both titin and myosin proteins.

By semi-quantitative RT-PCR, the expression onset and intensity of the skeletal muscle-specific genes *Myf5*, *Myod1* and *Myog* showed an increase in EB outgrowths overexpressing *Igf2*, with a similar pattern of expression to that occurring in vivo. Compared with non-transformed cells, the cells overexpressing *Igf2* showed an accelerated myogenic differentiation, associated with enhanced expression of MRFs, without effects in the sarcomeric structural organization.

We recently tested different factors for differentiating murine embryonic stem cells into muscle. In terms of morphology, the cells obtained are very similar to myoblasts in primary culture. The cells obtained also express mRNA from some proteins typical of the process of myogenesis, but proteins of mature muscle were not detected. To induce myogenesis in mES cells, EBs were cultured in media with 1%DMSO or 5 μ L of 10⁻⁷M *Igf2*. After 13 days, cells were harvested for mRNA and protein analysis. Cells treated with *Igf2* visually seemed to differentiate more rapidly and with a larger proportion of cells morphologically similar to myoblasts than the cells treated with DMSO (data not published) (Figure 7).

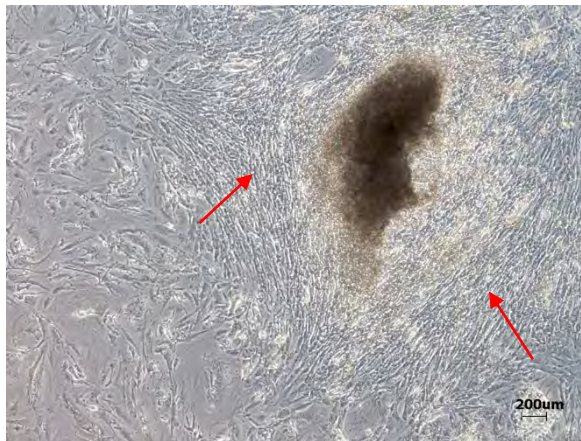


Fig. 7. Embryoid body from mES cells treated with *Igf2* twelve days after adhesion. Cells indicated by the arrows are similar in morphology to myoblasts.

4.2 *In vivo* experiments and potential of therapies for NMD

Due to the lack of any available therapy for NMDs, cell therapy has been suggested as a promising alternative. Several attempts to use adult stem cells have been carried out, but with limited results. However, due to their greater pluripotency, ES cells show a greater potential for cell therapy, but can also form teratomas, when simply injected into the organism without predifferentiation, which must be avoided. Methods must be developed for inducing differentiation of the ES cells into the desired cell type before therapy, in such a way as to obtain a uniform population of differentiated cells, and, ideally, without the presence of undifferentiated ES cells.

Although there are a reasonable number of articles describing derivation of cell lines with some skeletal muscle features, the functional results are far from ideal and more basic research into *in vitro* culturing procedures is required. The skeletal muscle tissue has a unique architecture, and it is very complicated to reproduce this *in vitro*, rendering it impossible to obtain totally differentiated cells prior to transplantation. Accordingly, transplants are best made with cells that are already committed to differentiating into the myogenic lineage but have not yet completed the process, which will occur *in vivo* following transplantation.

Co-culturing of muscle stem/precursor cells from skeletal muscle with EB outgrowths can induce myogenic differentiation *in vivo*. This was achieved by Bhagavati & Xu, (2005) by obtaining muscle from normal mice and deriving ES cells by pre-plating muscle fragments and culturing EBs over them. The myogenic differentiation obtained in this manner is probably due to the myogenic stem/precursor cells being provided an optimal developmental environment by inductive signals for the EBs. Alternatively, it is possible that the occasional cell fusion between ES cells and myogenic precursor cells, results in the reprogramming of a limited number of ES cells. To test the potential of these cells to form skeletal muscle *in vivo*, the ES cells derived from co-culturing were injected into *mdx* mice via intramuscular injection. The muscles were analyzed after two weeks by immunohistochemical and *in situ* hybridization analyses. Dystrophin positive fibers that were lying on the surface of recipient muscle fibres were observed in 2 out of 8 injected mice. However, no functional evaluation was performed to test whether this newly derived muscle tissue was functionally normal (Bhagavati & Xu, 2005).

Zheng et al. (2006) used three different media, and treatment with 10mM 5-azacytidine in some experiments, to induce myogenic differentiation in EBs derived from hES cells. The 5-azacytidine treatment reduced cell proliferation and caused the cells to elongate. The expression analysis showed that the drug decreased the expression of *Met* and *Pax3*, but increased the expression of *Pax7* and *Myod1*. The expression of *Myf5*, *Des* (desmin), *Myhc*, *Tnni1* (troponin I), *Ncam1* was observed under all culture conditions, but occurred in the absence of myotube and myofiber formation. This indicates that, although the treated cells had the potential to initiate myogenic gene expression, they were not yet committed to complete the process and form muscle cells. The transplantation of the human ES-derived precursors to NOD-SCID mice injured with cardiotoxin and irradiation resulted in the incorporation of approximately 28% of cells into host myofibers. In the adult environment, hES cells derived precursors followed the same sequence of muscle development as during embryogenesis: myoblasts expressed muscle-specific structural proteins, fused together to form myotubes and to mature into myofibers. Hybrid regenerated myofibers displayed striated myofibrils and expressed desmin, actinin, troponin I, dystrophin (human) and myosin heavy chain. The transplanted hES cells also gave rise to satellite cells, which can provide a semi-permanent source of donor cells (Zheng et al., 2006).

A mouse ES cell line (ZHTc6-MyoD) was established by Ozasa et al. (2007) by introducing a *Myod1* transgene controlled by a Tet-Off system. This cell line is feeder-free, proliferates indefinitely and has the potential to differentiate almost exclusively into the myogenic lineage in the absence of doxycycline, and without pre-differentiation into embryoid bodies. To start the differentiation process, doxycycline is removed and a differentiation medium containing 4% fetal bovine serum (FBS) is used. Although other FBS concentrations were tested, the best one for differentiation was found to be 4%. The morphology of ZHTc6-MyoD cells in an undifferentiated state is round, but after changing to differentiation medium, they became elongated. After seven days, they started to fuse into myotubes, and occasional light muscle contractions were observed. Besides *Myod1* expression, the expression of desmin (day 4), myogenin (day 4) and dystrophin (day 8) was detected by Western blotting. *Pax7*, *Myod1*, desmin, myosin heavy chain and dystrophin expression was assayed by immunohistochemical analysis. The cell's potential to differentiate into myofibers *in vivo* was also investigated by intramuscular injections into mdx mice and clusters of dystrophin-positive myofibers were detected in the injected area (Ozasa et al., 2007).

The use of hES cells in regenerative medicine requires pure cell populations, so that specific precursors are isolated; this is important to control cell differentiation into the desired lineage and avoid problems, such as teratomas. Barberi et al. (2007) developed a feeder-free induction system in monolayer culture to derive mesenchymal precursors from hES cells. The isolation of mesenchymal precursors was made using FACS (fluorescent activated cell sorting) of CD73+ cells, from which skeletal myoblasts were isolated by selecting for the expression of *Ncam1* (neural cell adhesion molecule 1) in another round of cell sorting. When induced with N2 medium, these skeletal myoblasts underwent terminal differentiation and formed contractile myotubes. The majority of *Ncam1*+ cells expressed *Myod1* and *Myog* in both undifferentiated and differentiated condition; however, the expression of mature muscle protein markers, such as myosin heavy chain 2a, desmin, skeletal muscle actin and sarcomeric myosin were present only in cells in terminal differentiation. After transplantation into a muscle injury model, long-term engraftment of hES cell-derived skeletal myoblasts was observed (Barberi et al., 2007).

One of the reasons for the difficulty in obtaining skeletal muscle progenitors from ES cells is the scarcity of paraxial mesoderm formation in the embryoid body, due to the lack of signals from the neural tube and notochord that are only present in the embryo. Enhancement of paraxial mesoderm formation was achieved by Darabi et al. (2008) by inducing *Pax3* by doxycyclin and sorting EBs for the presence of the PDGF- α receptor (*Pdgfr1*) a paraxial mesoderm marker, and absence of *Flk1* (synonymous with *VEGFR* in humans), which is a lateral plate mesoderm marker. The PDGF α R+*Flk1*- (*Pdgfr1*+/*Flk1*-) cell population is enriched under *Pax3* induction for doxycycline, once paraxial mesoderm expansion is *Pax3* dependent in the embryo; this population shows proliferative capacity and myogenic potential. However, terminal muscle differentiation occurs only when *Pax3* expression is removed and the cells exposed to a differentiation medium containing 2% horse serum. When transplanted into the tibialis anterior muscle of *Rag2^{-/-}yc^{-/-}* mice injured with cardiotoxin, the *Pdgfr1*+/*Flk1*- cells do not form teratomas and show muscle regeneration without the necessity of continuous *Pax3* induction. In *mdx* mice, these cells exhibited significant engraftment and better functional properties (Darabi et al., 2008).

The majority of transplantation experiments have been carried out in recessive models of muscular dystrophy, so it is unknown whether the same cellular therapies would produce equivalent results in dominant models. To address this question, Darabi et al. (2009) tested the therapeutic potential of the *Pax3* induced *Pdgfr1*+/*Flk1*- cells in *Frg1* transgenic mice, a

model for the dominant facioscapulohumeral muscular dystrophy (FSHD). Consistent with the results of the previous work, these cells showed appropriate engraftment and brought amelioration to muscle contractile properties, especially in males, perhaps due to gender differences. This work confirms the therapeutic potential of stem cells to treat both recessive and dominant forms of muscular dystrophy.

According to Sakurai et al. (2008) the *Pdgfr1*⁺ population, when either positive or negative for *Flk1*, clearly consisted of paraxial mesoderm precursors, confirmed by the expression *Msgn1* (mesogenin), *Mesp2* and *Tbx6*. However, myotome and myogenic markers are not expressed by *Pdgfr1*⁺ cells, indicating that these cells have progressed to an early somatic stage, but are not yet completely committed to a specific lineage. When transplanted into the injured quadriceps femoris muscle of KSN nude mice, the *Pdgfr1*⁺ mesodermal progenitors are localized in the interstitial zone of muscles, adjacent to the myofibers. This localization suggests that these progenitor cells differentiated into satellite cells, which is confirmed by the expression of *Pax7* and *Cd34*. Some progenitor nuclei are found in the center of myofibers, indicating the contribution of *Pdgfr1*⁺ cells to muscle regeneration (Sakurai et al., 2008).

The culture of EBs in a differentiation medium composed by DMEM, 0.1 mM nonessential amino acids, 0.1 mM 2-mercaptoethanol, 5% horse serum and 10% fetal bovine serum, gives rise to cells expressing *Pax7*, but not *Myod1*, indicating the presence of quiescent satellite cells (Chang et al., 2009). These *Pax7* positive cells were enriched by fluorescence activated sorting using the surface marker SM/C-2.6 antibody, typical of quiescent adult and neonatal mouse satellite cells. The SM/C-2.6 positive cells represented 15.7% of the EB derived cells. The SM/C-2.6 positive population showed myogenic potential both *in vitro* and *in vivo* experiments. *In vivo*, GFP⁺SM/C-2.6-positive cells were injected directly into cardiotoxin damaged muscles of mdx mice and were localized between the basal lamina and the muscle cell plasma membrane, which is the same location as satellite cells. After a second injury, a contribution of the injected cells to regeneration was observed, evidenced by the presence of GFP positive muscle fibers with central nuclei. In addition, the GFP⁺SM/C-2.6-positive cells were able to proliferate, and to replace recipient satellite cells that were still present 24 weeks after transplantation, which is important for a continuous regeneration of the surrounding tissue (Chang et al., 2009).

A summary of all published experiments to date are in table 1.

ES cell type	Strategy	Animal models	Markers	Delivery	Reference
mESC	media supplementation with DMSO	only in vitro experiments	none	only in vitro experiments	Rohwedel et al., 1994
mESC	IGF-II overexpression	only in vitro experiments	none	only in vitro experiments	Prelle et al., 2000
mESC	co-culture with muscle cells culture	<i>mdx</i> mice/ <i>Rag2</i> ^{-/-} <i>γc</i> ^{-/-} mice	none	intramuscular	Bhagavati & Xu, 2005
hESC	media supplementation 5-azacytidine	NOD-SCID mice	none	intramuscular	Zheng et al., 2006
ZHT6 mESC	MyoD gene-inducible system	<i>mdx</i> nude mice	Sca ⁺ /c-kit ⁺ /CD34 ⁻	intramuscular	Ozasa et al., 2007
hESC	FACS of mesenchymal precursors	SCID/Beige mice	CD73 ⁺ /CD56 ⁺	intramuscular	Barberi et al., 2007
mESC	Pax3 induction/ FACS	<i>mdx</i> mice/ <i>Rag2</i> ^{-/-} <i>γc</i> ^{-/-} mice	PDGFaR ⁺ Flk1 ⁻	intramuscular/systemic	Darabi et al., 2008
mESC	FACS of paraxial mesoderm precursors	KSN nude mice	PDGFaR ⁺ /Flk1 ⁻ or Flk ⁺	intramuscular	Sakurai et al., 2008
mESC	media supplementation DMSO and RA	only in vitro experiments	none	only in vitro experiments	Kennedy et al., 2009
mESC	Pax3 induction/ FACS	<i>Frg1</i> mice	PDGFaR ⁺ Flk1 ⁻	intramuscular/systemic	Darabi et al., 2009
mESC	media composed of 5% HS and 10% FBS	<i>mdx</i> mice	SM/C-2.6 ⁺	intramuscular	Chang et al., 2009

Table 1. Summary of experiments testing the myogenic potential of ES cells.

5. Conclusion

Several attempts to achieve appropriate differentiation of ES cells and implantation into model organisms have been tested with mixed results. The differentiation into the muscular lineage could be successfully obtained *in vitro*, as evidenced by the expression of myogenic markers. However, despite attempts to direct *in vivo* differentiation, to date few reports have documented successful long term therapeutic results using these procedures. Strategies, such as selecting subpopulations of undifferentiated or partially differentiated embryonic stem cells before any kind of implantation treatment is undertaken, are emerging and should result in more homogenous cell populations and, diminish the frequency of maturation of stem cells into undesired cell types. In fact, the combination of several approaches, including cell sorting, genetic modification, and prior *in vitro* induction will probably be necessary to obtain successful therapeutic outcomes with ES cells.

6. Acknowledgment

The authors would like to thank the following researchers, for scientific and technical support: Dr. Mayana Zatz, Dr. Lydia Yamamoto, Dr. Lygia da Veiga Pereira. The authors also thank Dr P. L. Pearson, a visiting professor to Brazil for his contributions to both the grammar and scientific content of this work. This work was supported by Fundação de Amparo a Pesquisa do Estado de São Paulo - Centro de Pesquisa, Inovação e Difusão (FAPESP-CEPID), Conselho Nacional de Desenvolvimento Científico e Tecnológico (CNPq), and Instituto Nacional de Ciencia e Tecnologia (INCT), FINEP, and Associação Brasileira de Distrofia Muscular (ABDIM).

7. References

- Barberi, T.; Bradbury, M.; Dincer, Z.; Panagiotakus, G.; Socci, N. D. & Studer, L. (2007). Derivation of engraftable skeletal myoblasts from human embryonic stem cells. *Nature Medicine*, Vol.13, No.5, (May, 2007), pp.642-648
- Bhagavati, S. & Xu, W. (2005). Generation of skeletal muscle from transplanted embryonic stem cells in dystrophic mice. *Biochemical and Biophysical Research Communications*, Vol.333, No.2, (June, 2005), pp.644-649
- Bittner, R. E.; Anderson, L. V.; Burkhardt, E.; Bashir, R.; Vafiadaki, E.; Ivanova, S.; Raffelsberger, T.; Maerk, I.; Höger, H.; Jung, M.; Karbasiyan, M.; Storch, M.; Lassmann, H.; Moss, J. A.; Davison, K.; Harrison, R.; Bushby, K.M. & Reis, A. (1999). Dysferlin deletion in SJL mice (SJL-Dysf) defines a natural model for limb girdle muscular dystrophy 2B. *Nature Genetics*, Vol.23, No.2, (October, 1999), pp.141-142
- Blomhoff, R. & Blomhoff, H.F. (2006). Overview of retinoid metabolism and function. *Journal of Neurobiology*, Vol.66, No.7, (June, 2006), pp.606-630
- Brand-Saber, B. & Christ, B. (1999). Genetic and epigenetic control of muscle development in vertebrates. *Cell Tissue Research*, Vol.296, No.1, (April, 1999), pp.199-212
- Bryson-Richardson, R.J. & Currie, P. D. (2008). The genetics of vertebrate myogenesis. *Nature Reviews Genetics*, Vol.9, No.8, (August, 2008), pp.632-646

- Buckingham, M. (2006). Myogenic progenitor cells and skeletal myogenesis in vertebrates. *Current Opinion in Genetics & Development*, Vol.16, No.5, (October, 2006), pp. 525-532
- Buckingham, M. (2001). Skeletal muscle formation in vertebrates. *Current Opinion in Genetics & Development*, Vol.11, No.4, (August, 2001), pp.440-448
- Bulfield, G.; Siller W. G.; Wight, P. A. & Moore, K. J. (1984). X Chromosome-Linked Muscular Dystrophy (mdx) in the Mouse. *Proceedings of the National Academy of Sciences*, Vol.81, No.4, (February, 1984), pp.1189-1192
- Chang, H.; Yoshimoto, M.; Umeda, K.; Iwasa, T.; Mizuno, Y.; Fukada, S.; Yamamoto, H.; Motobashi, N.; Suzuki, Y. M.; Takeda, S.; Heike, T. & Nakahata, T. (2009). Generation of transplantable, functional satellite-like cells from mouse embryonic stem cells. *The FASEB Journal*, Vol.23, No.6, (June, 2009), pp.1907-1919
- Darabi, R.; Gehlbach, K.; Bachoo, R. M.; Kamath, S.; Osawa, M.; Kamm, E. K.; Kyba, M. & Perlingeiro, R. C. R. (2008). Functional skeletal muscle regeneration from differentiating embryonic stem cells. *Nature Medicine*, Vol.14, No.2, (February, 2008), pp.134-143
- Darabi, R.; Baik, J.; Clee, M.; Kyba, M.; Tupler, R. & Perlingeiro, R. C. R. (2009). Engraftment of embryonic stem cell-derived myogenic progenitors in a dominant model of muscular dystrophy. *Experimental Neurology*, Vol.220, No.1, (August, 2009), pp.212-216
- Emery, A. E. H. (2002). The muscular dystrophies. *The Lancet*, Vol.359, No.9307, (February, 2002), pp.687-695
- Ervasti, J. M. & Campbell, K. P. (1993). A role for the dystrophin-glycoprotein complex as a transmembrane linker between laminin and actin. *Journal of Cell Biology*, Vol.122, No.4, (August, 1993), pp.809-823
- Ferrari, G.; Cusella-De Angelis, G.; Coletta, M.; Paolucci, E.; Stornaiuolo, A.; Cossu, G. & Mavilio, F. (1998). Muscle regeneration by bone marrow-derived myogenic progenitors. *Science*, Vol.279, No.5356, (March, 1998), pp.1528-1530
- Grivennikov, I. A. (2008). Embryonic stem cells and the problem of directed differentiation. *Biochemistry (Moscow)*, Vol.73, No.13, (February, 2008), pp.1438-1452
- Gussoni, E.; Soneoka, Y.; Strickland, C. D.; Buzney, E. A.; Khan, M. K.; Flint, A. F.; Kunkel, L. M. & Mulligan R. C. (1999). Dystrophin expression in the mdx mouse restored by stem cell transplantation. *Nature*, Vol.401, No.6751, (September, 1999), pp.390-394
- Hawke, T.J. & Garry, D.J. (2001). Myogenic satellite cells: physiology to molecular biology. *Journal of Applied Physiology*, Vol.91, No.2, (August, 2001), pp.534-551
- Hoffman, E. P.; Brown, R. H. Jr & Kunkel, L. M. (1987). Dystrophin: the protein product of the Duchenne muscular dystrophy locus. *Cell*, Vol.51, No.6, (December, 1987), pp.919-928
- Kennedy, K. A. M.; Porter, T.; Mehta, V.; Ryan, S. D.; Price, F.; Peshdary, V.; Karamboulas, C.; Savage, J.; Drysdale, T. A.; Li, S.; Bennett, S. A. L. & Skerjanc, I. L. (2009). Retinoic acid enhances skeletal muscle progenitor formation and bypasses inhibition by bone morphogenetic protein 4 but not dominant negative β -catenin. *BMC Biology*, Vol.7, (October, 2009), pp.67-88
- Lee, J. Y, Qu-Petersen, Z.; Cao, B. ; Kimura, S. ; Jankowski, R. ; Cummins, J. ; Usas, A. ; Gates, C. ; Robbins, P. ; Wernig, A. & Huard, J. (2000). Clonal isolation of muscle-derived

- cells capable of enhancing muscle regeneration and bone healing. *Journal of Cell Biology*, Vol.150, No.5, (September, 2000), pp.1085-1100
- Muntoni, F.; Brockington, M.; Torelli, S. & Brown, S. C. (2004). Defective glycosylation in congenital muscular dystrophies. *Current Opinion in Neurology*, Vol.17, No.2, (April, 2004), pp.205-209
- Naya, F. S. & Olson, E. (1999). MEF2: a transcriptional target for signaling pathways controlling skeletal muscle growth and differentiation. *Current Opinion in Cell Biology*, Vol.11, No.6, (December, 1999), pp.683-688
- Ozasa, S.; Kimura, S.; Ito, K.; Ueno, H.; Ikezawa, M.; Matsukura, M.; Yoshioka, K.; Araki, K.; Yamamura, K.; Abe, K.; Niwa, H. & Miike, T. (2007). Efficient conversion of ES cells into myogenic lineage using the gene-inducible system. *Biochemical and Biophysical Research Communications*, Vol.357, No.4, (April, 2007), pp.957-963
- Parker, M. H.; Seale, P. & Rudnicki, M.A. (2003). Looking back to the embryo: defining transcriptional networks in adult myogenesis. *Nature Reviews Genetics*, Vol.4, No.7, (July 2003), pp. 495-507
- Patel, K. & Amthor, H. (2005). The function of Myostatin and strategies of Myostatin blockade - new hope for therapies aimed at promoting growth of skeletal muscle. *Neuromuscular Disorders*, Vol.15, No.2, (February, 2005), pp.117-126
- Prele, K.; Wobus, A. M.; Krebs, O.; Blum, W. F. & Wolf, E. (2000). Overexpression of insulin-like growth factor-II in mouse embryonic stem cells promotes myogenic differentiation. *Biochemical and Biophysical Research Communications*, Vol.277, No.3, (September, 2000), pp.631-638
- Relaix, F. & Marcelle, C. (2009). Muscle stem cells. *Current Opinion in Cell Biology*, Vol.21, No.6, (December, 2009), pp.748-753
- Rohwedel, J.; Maltsev, V.; Bober, E.; Arnold, H. H.; Hescheler, J. & Wobus, A. M. (1994). Muscle cell differentiation of embryonic stem cells reflects myogenesis in vivo: developmentally regulated expression of myogenic determination genes and functional expression of ionic currents. *Developmental Biology*, Vol.164, No.1, (February, 1994), pp.87-101
- Sakurai, H.; Okawa, Y.; Inami, Y.; Nishio, N. & Isobe, K. (2008). Paraxial mesodermal progenitors derived from mouse embryonic stem cells contribute to muscle regeneration via differentiation into muscle satellite cells. *Stem Cells*, Vol.26, No.7, (May, 2008), pp.1865-1873
- Straub, V. & Campbell, K. P. (1997). Muscular dystrophies and the dystrophin-glycoprotein complex. *Current Opinion in Neurology*, Vol.10, No.2, (April, 1997), pp.168-175
- Straub, V.; Duclos, F.; Venzke, D. P.; Lee, J. C.; Cutshall, S.; Leveille, C. J. & Campbell, K. P. (1998). Molecular pathogenesis of muscle degeneration in the delta-sarcoglycan-deficient hamster. *American Journal of Pathology*, Vol.153, No.5, (November, 1998), pp.1623-1630
- Tome, F. M.; Evangelista, T.; Leclerc, A.; Sunada, Y.; Manole, E., Estournet, B.; Barois, A.; Campbell, K. P. & Fardeau, M. (1994). Congenital muscular dystrophy with merosin deficiency. *Comptes Rendus De l'Academie des Sciences III*, Vol.317, No.4, (April, 1994), pp.351-357
- Torrente, Y.; Tremblay, J. P.; Pisati, F.; Belicchi, M.; Rossi, B.; Sironi, M.; Fortunato, F.; El Fahime, M.; D'Angelo, M. G.; Caron, N. J.; Constantin, G.; Paulin, D.; Scarlato, G. & Bresolin, N. (2001). Intraarterial injection of muscle-derived CD34(+) Sca-1(+) stem

- cells restores dystrophin in mdx mice. *Journal of Cell Biology*, Vol.152, No.2, (January, 2001), pp.335-348
- Vainzof, M.; Passos-Bueno, M.R. & Zatz, M. (2003). Immunological methods for the analysis of protein expression in neuromuscular diseases. *Methods Molecular Biology*, Vol.217, pp.355-378.
- Vainzof, M. & Zatz, M. (2003). Protein defects in neuromuscular diseases. *Brazilian Journal of Medical and Biological Research*, Vol.36, No.5, (May, 2003), pp.543-555
- Vainzof, M.; Ayub-Guerrieri, D.; Onofre, P.C.G.; Martins, P.C.M.; Lopes, V.F.; Zilberztajn, D.; Maia, L.S.; Sell, K. & Yamamoto, L.U. (2008). Animal Models for genetic neuromuscular diseases. *Journal of Molecular Neuroscience*, Vol.34, No.3, (March, 2008), pp.241-248
- Wobus, A. M.; Guan, K.; Yang, H. T. & Boheler, K. R. (2002). Embryonic stem cells as a model to study cardiac, skeletal muscle and vascular smooth muscle cell differentiation. *Methods in Molecular Biology*, Vol.185, pp.127-156
- Yang, T.; Riehl, J.; Esteve, E.; Matthael, K. I.; Goth, S.; Allen, P. D.; Pessah, I. N. & Lopez, J. R. (2006). Pharmacologic and functional characterization of malignant hyperthermia in the R163C RyR1 knock-in mouse. *Anesthesiology*, Vol.105, No.6, (December, 2006), pp.1164-1175
- Yoshida, M. & Ozawa, E. (1990). Glycoprotein complex anchoring dystrophin to sarcolemma. *Journal of Biochemistry*, Vol.108, No.5, (November, 1990), pp.748-752
- Zheng, J. K.; Wang, Y.; Karandikar, A.; Wang, Q.; Gai, H.; Liu, A. L.; Peng, C. & Sheng, H. Z. (2006). Skeletal myogenesis by human embryonic stem cells. *Cell Research*, Vol.16, No.8, (August, 2006), pp.713-722



Embryonic Stem Cells - Differentiation and Pluripotent Alternatives

Edited by Prof. Michael S. Kallos

ISBN 978-953-307-632-4

Hard cover, 506 pages

Publisher InTech

Published online 12, October, 2011

Published in print edition October, 2011

The ultimate clinical implementation of embryonic stem cells will require methods and protocols to turn these unspecialized cells into the fully functioning cell types found in a wide variety of tissues and organs. In order to achieve this, it is necessary to clearly understand the signals and cues that direct embryonic stem cell differentiation. This book provides a snapshot of current research on the differentiation of embryonic stem cells to a wide variety of cell types, including neural, cardiac, endothelial, osteogenic, and hepatic cells. In addition, induced pluripotent stem cells and other pluripotent stem cell sources are described. The book will serve as a valuable resource for engineers, scientists, and clinicians as well as students in a wide range of disciplines.

How to reference

In order to correctly reference this scholarly work, feel free to copy and paste the following:

Camila F. Almeida, Danielle Ayub-Guerrieri and Mariz Vainzof (2011). Myogenic Differentiation of ES Cells for Therapies in Neuromuscular Diseases: Progress to Date, Embryonic Stem Cells - Differentiation and Pluripotent Alternatives, Prof. Michael S. Kallos (Ed.), ISBN: 978-953-307-632-4, InTech, Available from: <http://www.intechopen.com/books/embryonic-stem-cells-differentiation-and-pluripotent-alternatives/myogenic-differentiation-of-es-cells-for-therapies-in-neuromuscular-diseases-progress-to-date>

INTECH
open science | open minds

InTech Europe

University Campus STeP Ri
Slavka Krautzeka 83/A
51000 Rijeka, Croatia
Phone: +385 (51) 770 447
Fax: +385 (51) 686 166
www.intechopen.com

InTech China

Unit 405, Office Block, Hotel Equatorial Shanghai
No.65, Yan An Road (West), Shanghai, 200040, China
中国上海市延安西路65号上海国际贵都大饭店办公楼405单元
Phone: +86-21-62489820
Fax: +86-21-62489821

© 2011 The Author(s). Licensee IntechOpen. This is an open access article distributed under the terms of the [Creative Commons Attribution 3.0 License](#), which permits unrestricted use, distribution, and reproduction in any medium, provided the original work is properly cited.