

We are IntechOpen, the world's leading publisher of Open Access books Built by scientists, for scientists

6,900

Open access books available

186,000

International authors and editors

200M

Downloads

Our authors are among the

154

Countries delivered to

TOP 1%

most cited scientists

12.2%

Contributors from top 500 universities



WEB OF SCIENCE™

Selection of our books indexed in the Book Citation Index
in Web of Science™ Core Collection (BKCI)

Interested in publishing with us?
Contact book.department@intechopen.com

Numbers displayed above are based on latest data collected.
For more information visit www.intechopen.com



Application of Blade-Tip Sensors to Blade-Vibration Monitoring in Gas Turbines

Ryszard Szczepanik, Radosław Przysowa, Jarosław Spychała,
Edward Rokicki, Krzysztof Kaźmierczak and Paweł Majewski
Instytut Techniczny Wojsk Lotniczych (ITWL, Air Force Institute of Technology)
Poland

1. Introduction

Non-contact blade vibration measurement in turbomachinery is performed during development phase to verify design quality of bladed disk and its structural integrity (Zielinski & Ziller, 2005). The method, referred as blade tip-timing (BTT) or Non-contact Stress Measurement System (NSMS) is applied by mostly all manufacturers as a complement of strain gauges, traditionally used to measure stress levels and blade vibration parameters (Roberts, 2007). Measurement results are usually presented in the function of rotational speed in Campbell diagram, showing vibration modes excited by particular engine orders. Operational stress levels and accumulated fatigue cycles should not exceed material endurance limits.

High Cycle Fatigue, occurring at low stress and high vibration frequency is a common reason for blade damage in turbomachinery. HCF has been identified as factor limiting development of more efficient blade designs, affecting safe operation of turbomachinery and causing considerable losses (Nicholas, 2006). US Air Forces initiated HCF Science and technology program in late 1990's, which launched and supported multidisciplinary efforts for HCF mitigation, continued recently as Engine Prognosis Program. Development of tip-timing instrumentation both for supporting design of fatigue-resistant components and also for online blade crack detection has been one of research priorities and provided new sensors and advanced data analysis methods. NSMS technologies are also developed and successfully applied in power industry (Ross, 2007).

Nowadays Blade Tip-Timing using optical sensors is considered as mature technology able to replace strain gauges in development process of fans or compressors (Rushard, 2010; Courtney, 2011). Current research activities concentrate on turbines, which are more demanding environment for tip-timing instrumentation due to high temperature, contamination and lower amplitude of vibration. Development of alternative tip sensors is considered as another priority. Optical sensors despite providing the highest available resolution, require cleaning and ensure quite limited life, which makes them unusable in embedded systems for blade health monitoring.

This chapter describes development and application of inductive, eddy-current and microwave tip-timing sensors for gas-turbine blades, carried out in ITWL in last five years. Other sensors' applications, like measurement of tip-clearance, blade twist and disk

vibration are also discussed here. The sensors' performance has been verified during engine bench tests and in spin facility. They have been used in prototype onboard system for health monitoring of turbofan engine (Przysowa, Spychała, 2008). Similar research efforts have been reported lately by some other leading research centers (Madden, 2010; Hayes et al. 2011; Millar, 2011), revealing not many details. Tip-timing technology is still sensitive area for involved companies and very few journal papers and books are available. State of the art is presented on technical conferences and in patent applications.

More and more interest in blade health monitoring is observed recently, as it allows to maintain legacy turbines, which blades were designed before implementation of CAD systems. It is usually safe and efficient to start monitoring poorly designed blades, instead of canceling or redesigning the machine. In aero-engines fan blades vibration monitoring is performed also to early detect foreign object damage (Gilboy et al. 2009) and to mitigate FOD-initiated HCF cracks.

Online health monitoring may be a method for damage-tolerance maintenance (ENSIP 2004) also for modern blade designs, ensuring turbine operation up to material endurance limits.

This chapter is devoted to problems including sensor design, blade pulse generation and triggering, time-of-arrival measurement, which form only low-level but fundamental part of NSMS. They are common for all applications of BTT, like health monitoring or component testing for design verification or engine certification. Details of TOA data processing, crucial for estimating stress or identification of vibration mode parameters are only mentioned here and are further discussed by other authors (Heath, 2000; Zielinski & Ziller, 2005; Witos, 2007; Loftus, 2010).

2. Parameters of signals received from inductive sensors

Inductive sensors (known also as speed pickups or Variable Reluctance sensors) were primarily used for blade tip-timing in steam turbines (Zablockij et al., 1977). They were successfully employed in monitoring system for blade vibration, which was developed in Poland for turbojet training aircrafts (Szczepanik & Witoś, 1998; Witoś & Szczepanik, 2005). It is the first airborne tip-timing system implemented worldwide and is still in use by Polish Air Forces.

Inductive sensors are optimal for embedded systems due to simple design, low cost and very long life (even several years). The only disadvantage is ability to sense only ferromagnetic materials, which are rarely used in modern gas turbines.

Authors' efforts focused on magnetic field modeling, optimizing amplifier and coil design and selection of strong permanent magnets resulted in development of the sensors usable for non-magnetic metal blades (titan, nickel based super-alloys etc.). Sensors of this type are often called "passive eddy-current". Temperature resistant designs of the inductive sensor for blade tip-timing in gas-turbines have also been demonstrated (Przysowa, Spychała, 2008), able to operate in contact with exhaust gases of temperature even as high as 1200 K. The following subchapters (2-6) review features and applications of advanced inductive sensors, aimed at their implementation in onboard monitoring system.

The signal received from an inductive sensor installed in the area of blade rotation and measured at the output of the conditioning circuit may be like the waveform shown in Fig. 1.

The acquired waveform makes it possible to obtain, after processing the curve by electronic circuits, a number of parameters that can be used for non-contact measurements of blade vibration and momentary tip clearance, i.e.:

- $tp(n)$ – arrival time of a blade, counted from the beginning of measurements,
- $TCx(n)$ – peak-to-peak amplitude of the x signal,
- $TCy(n)$ – peak-to-peak amplitude of the y signal (applicable for two-coil sensors),
- $tz(n)$ –falling time for the pulse edge of the x signal,
- $Ax(n)$ – peak amplitude of the x signal at the moments of $tp(n)$,
- TTn – arrival time for a subsequent blade,
- tip clearance.

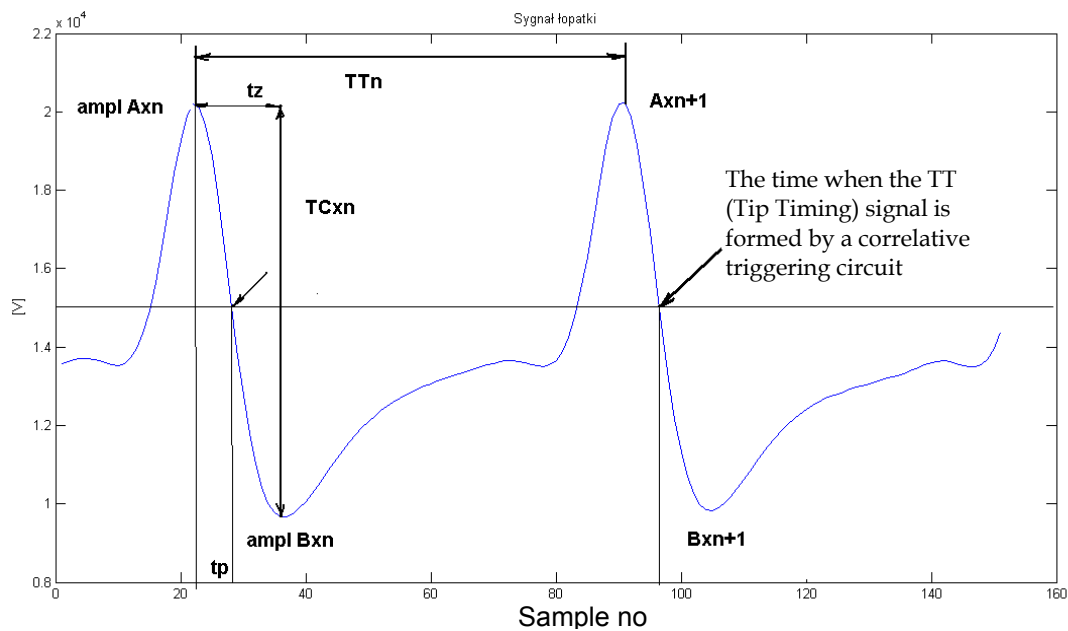


Fig. 1. The waveform of the signal acquired from the sensor with indication of diagnostic parameters

Arrival times serve as the basis for further analysis and make it possible to estimate parameters of blade vibration (Heath, 2000), which can be used for determining condition of blades. However, the signal generated by inductive sensors transfers also other information like tip clearance, rotor unbalance, the angle of blade tip.

3. Non-contact measurement of turbine blade vibration

Measurements of blade vibration (tip timing) are carried out by direct measurements of time intervals between the events when subsequent blades appear below the sensor (Witoś, 1999). Correct and accurate detection of these events is the basis for further processing of measurement signals (Żółtowski, 1984). For non-ferromagnetic blades, the

blade is just below the sensor at the moment of the maximum slope for the basic signal. It corresponds to the maximum of the first derivative or the zeroed value of the second derivative.

The sequence of pulse waveforms produced by the sensor is the sensor response to a sequence of events when blades cross the area just below the sensor. That is why we speak about the *event time* having in mind the initial moment when formation of the sensor response is started. The primary carrier of information about the *event time* is always the signal produced by the sensor or, in more details, the information is contained in the invariable parameters of the waveform shape. Then the signal is transferred to the triggering circuit via appropriate signal conditioning modules that provide the most favourable conditions for extraction of required parameters. The nature of the conditioning process and type of the conditioning technology applied depend on the type of a specific sensor and the collaborating blade. To minimize indeterminacy of the moment when the signal level exceeds the reference threshold, the maximum possible slope of the signal waveform is required at the detection point with the minimum possible noise dispersion. It is the requirement that needs maximization of the signal slope with respect to the noise and is referred to as the acronym (*slope-to-noise ratio*).

$$SLNR = \frac{\overset{def}{\left[\frac{dV_i(t)}{dt} \right]_{T_k}}}{\sigma_N} \quad (1)$$

The task of the triggering circuit that is meant for extraction of time-related information is to produce a standard logic pulse (so-called Tip Timing – TT) with the edge that remains in a defined, fixed relationship to the time coordinate of the event. To detect the moment when a blade appears below the sensor one can use threshold discriminators or comparators. Depending on the adopted measurement methods, these devices are operated in a conventional way, with the non-zero reference level or as zero crossing detectors. The produced logic pulse (the TT signal) is delayed against the event of a blade arrival. Thus, the time necessary to produce the pulse shall be referred to as the instrumental time. For single-channel measurement, the delay is not very important provided that it maintains its fixed duration, in spite of waveform variations for the sensor signal. In case of multi-channel measurements, the instrumental time may vary, despite identical configuration of electronic components in the channel. That inequality may be caused by parameter dispersion of components of the amplifier or the sensor.

Fig. 2 and Fig. 3 present waveforms of turbine blade vibration recorded during ground tests of a turbojet.

The estimated vibration of turbine blades feature the low amplitude at the level of 0.1mm, but application of the constant fraction detection made it possible to achieve a very high resolution that enabled measurements of vibrations with the accuracy as high as up to 0.01%.

Fig. 4 shows the normalized amplitude of resonance vibrations for a single turbine blade. The relationship presented in Fig. 4 serves as the basis to plot the Campbell diagram. It allows to determine the excitation orders for the vibration synchronous with the rotational speed. The observed vibration in the first bending mode is excited by the fifth and higher engine orders (Fig. 5).

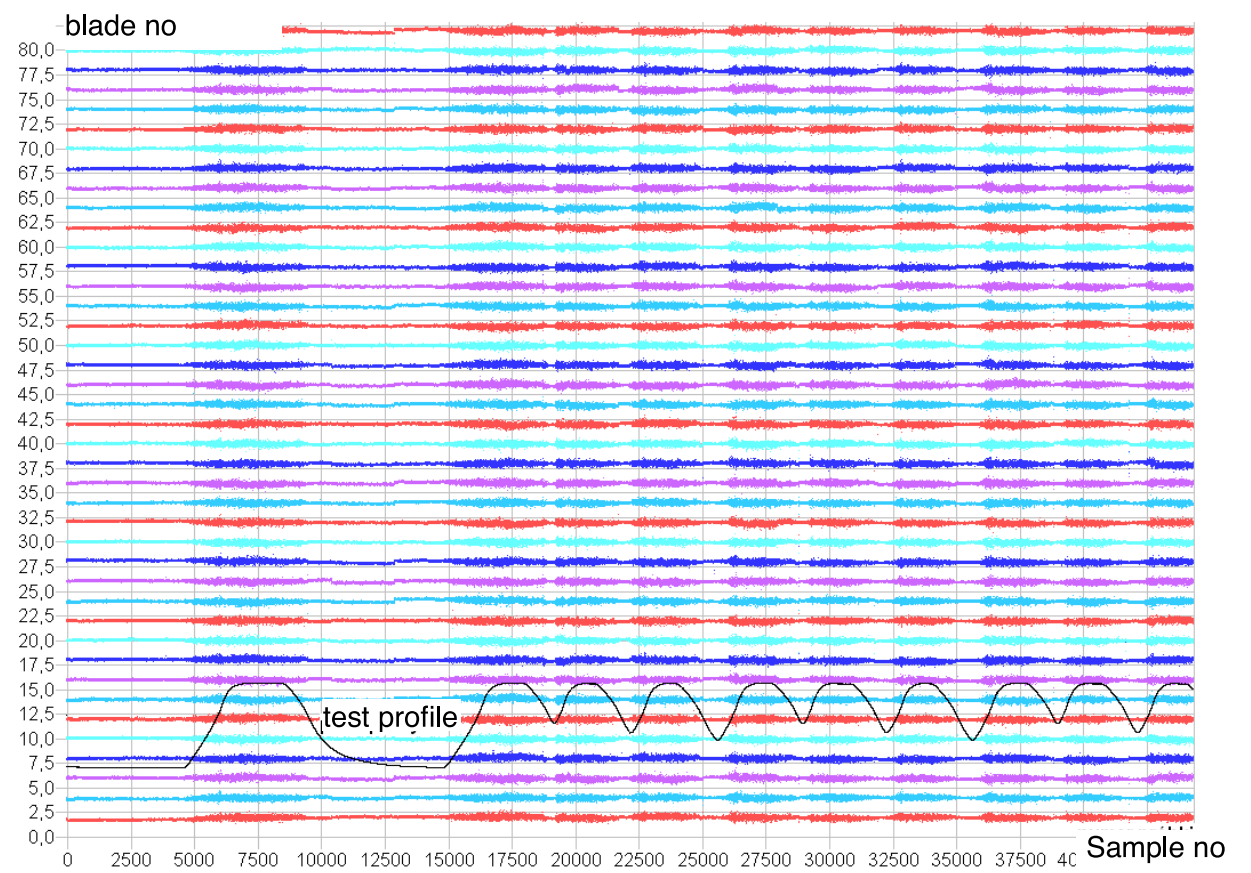


Fig. 2. Blade vibration amplitude and rotor speed in subsequent rotations of the turbine

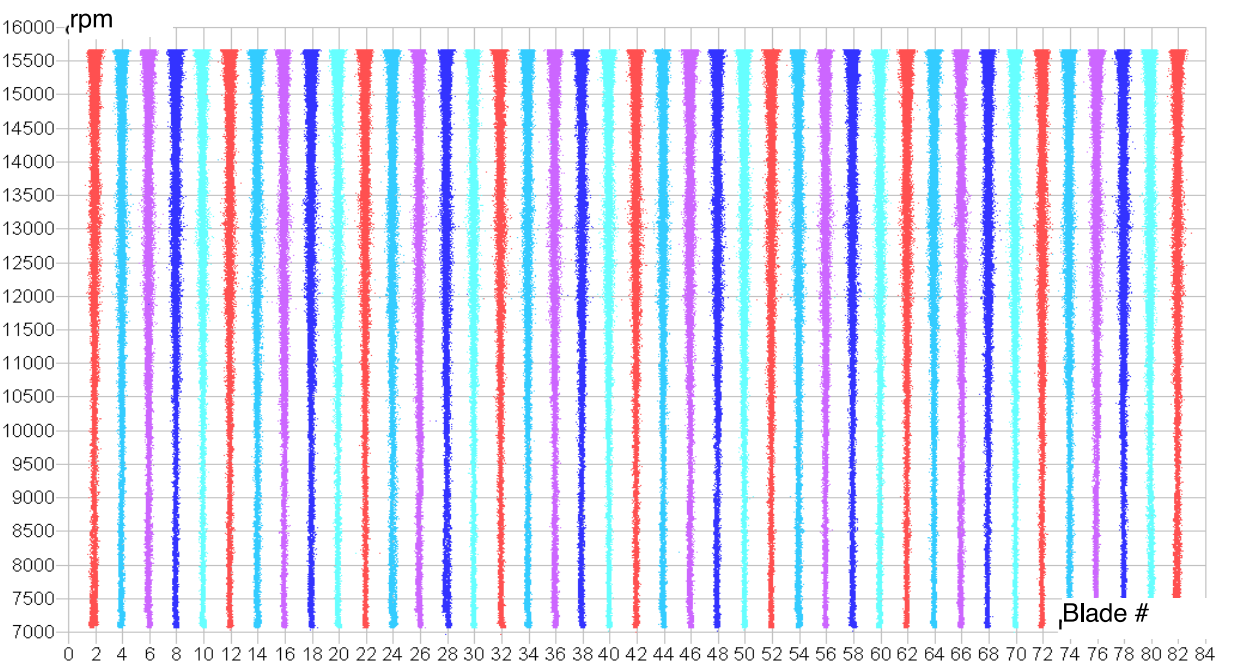


Fig. 3. The relation between blade vibration amplitude and rotor speed

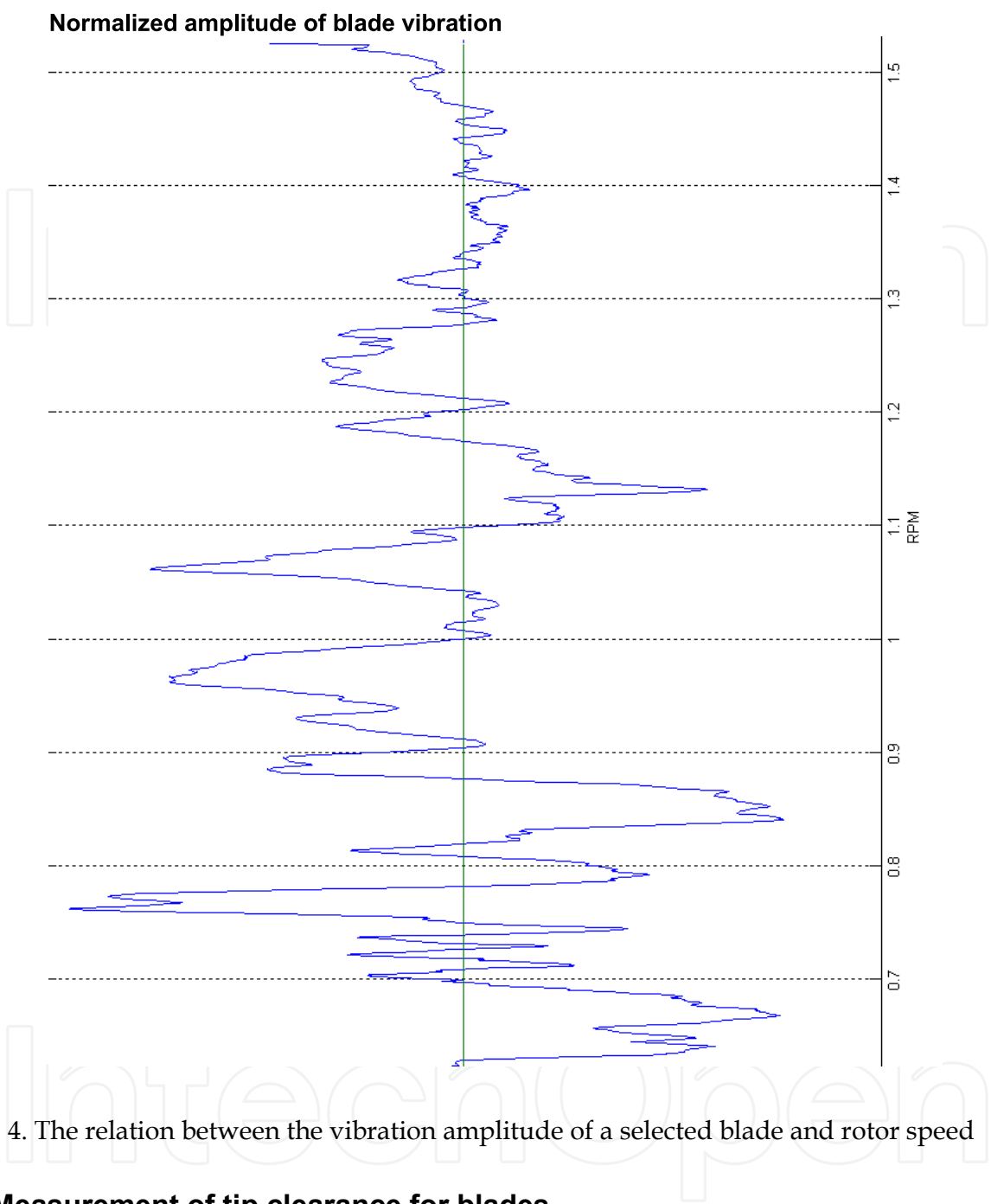


Fig. 4. The relation between the vibration amplitude of a selected blade and rotor speed

4. Measurement of tip clearance for blades

Additionally, it was evaluated whether the applied measurement chain is suitable for determining the tip clearance above turbine blades rotating in turbojet engine. The tip clearance of a selected blade measured with an inductive sensor for the entire range of rotor speed is shown in Fig. 6. Design properties of that sensor are different from the ones demonstrated by the sensor that is used for the tip timing method. During rotor acceleration and deceleration the measurement results indicate clearance variations characteristic for turbomachinery (Fig. 7) caused by different parameters of thermal expansion for blading and casing.

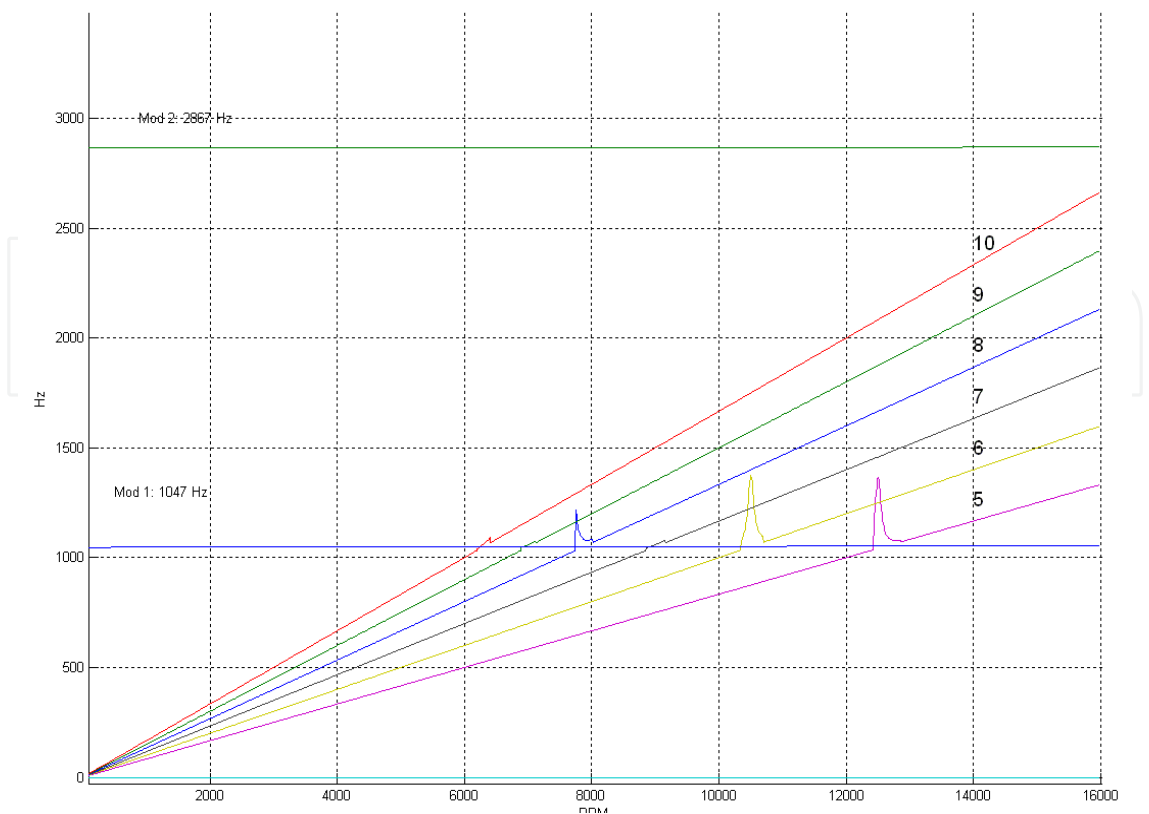


Fig. 5. The relationship between the frequency of a turbine blade vibration and the rotation speed – the Campbell diagram

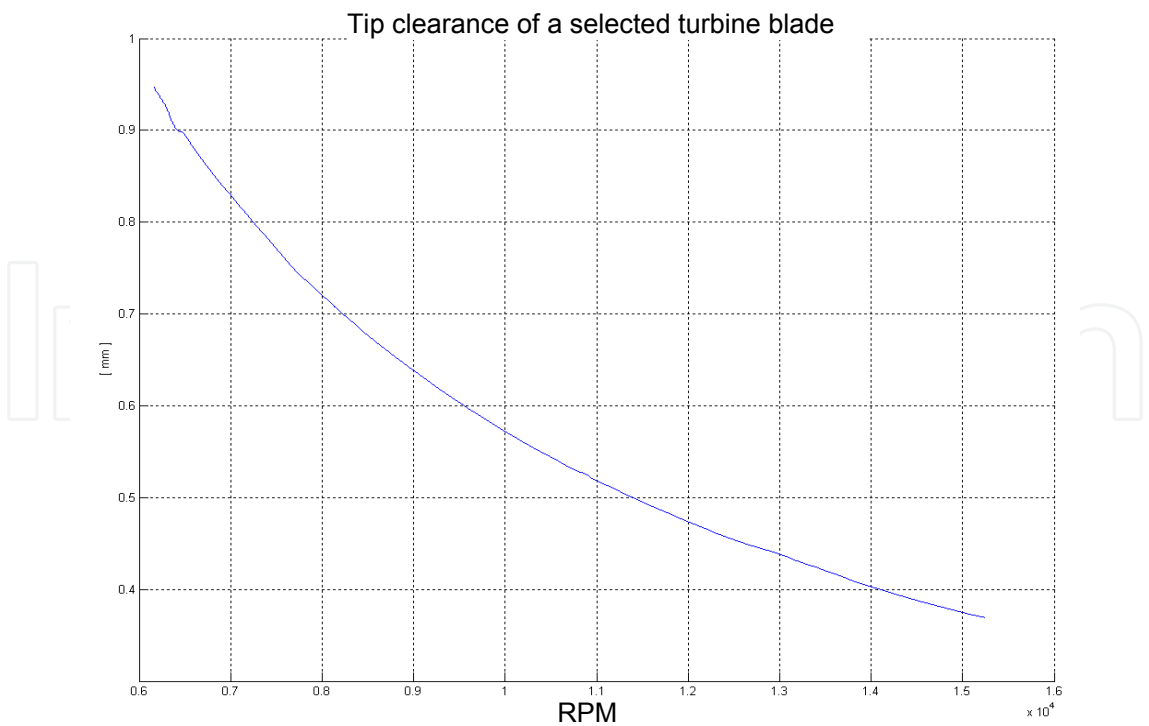


Fig. 6. The relationship between variations of the turbine rotation speed and variations of the tip clearance

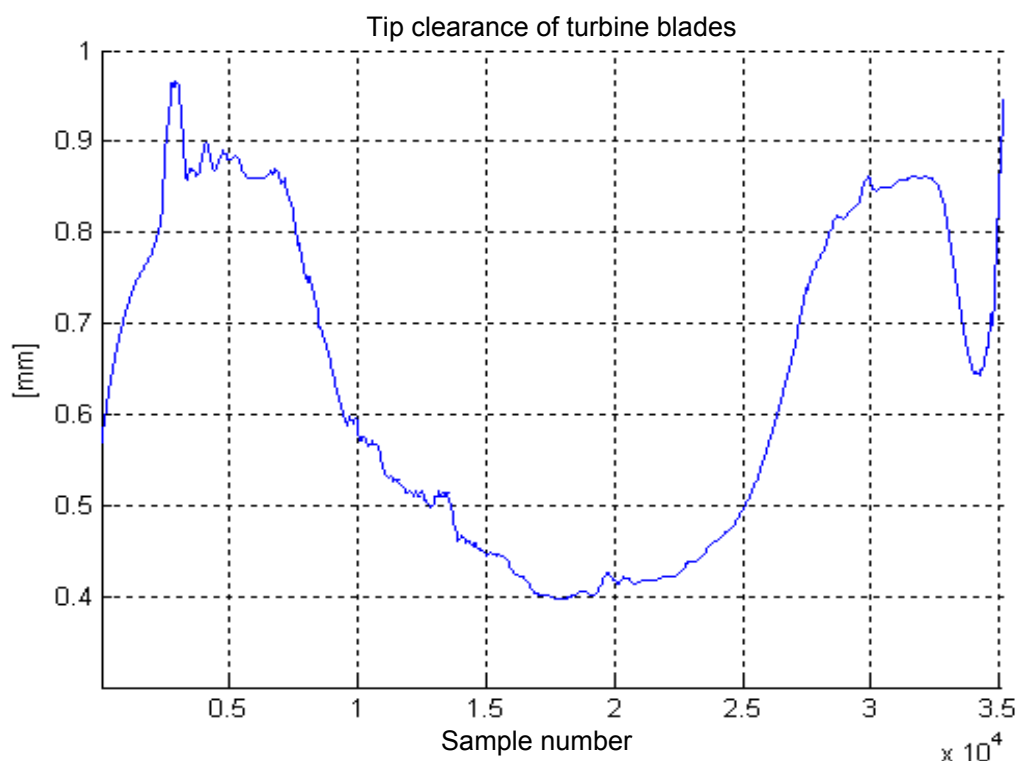


Fig. 7. Average tip clearance of turbine blades for an example test profile

5. Measurements of twist angles for blades

The section 2 reports the possibility of determination of additional diagnostic parameters on the basis of the measured signals. For that purpose a software detector of the signal peak values was developed by means of procedures embedded in the Matlab software tools. The peak detector was provided with components of the constant fraction detection of signals, which improves insensitivity of the determined parameters to amplitude variations of the signal obtained from the inductive sensor. The signal from the peak detector served as the basis for determination of arrival moments of blades. In turn, the knowledge of arrival times makes it possible to calculate twist angles of blades at the moments of arrival.

It should be mentioned that the concept of measurement of angles between blades and the measurement plane is based on the formula for mutual induction (Rokicki et al. 2009). The initial laboratory tests were carried out with use of a sensor with two coils. At first the disk with blades was prepared in such a way that the disk has 1 titan blade and two blades with different twist angles (Fig. 8). Then the sensor signal was recorded (Fig. 9) for three different angles of the sensor position (0° , 45° and 90°).

Fig. 9 and 10 present signals for various twist angles of blades. Low amplitude and half-round pulses are the sensor response to arrival of a titan blade.

The amplitudes of pulses collected from both coils of the sensor as well as arrival angles for individual blades are shown in Fig. 11. Therefore, the possibility of determination of angular positions (twist angles) for blades was confirmed.

The newly developed methodical approach and algorithms were subsequently used to find out arrival angles of blades during turbojet bench test (Fig. 12).



Fig. 8. View of the turbine disc with blades

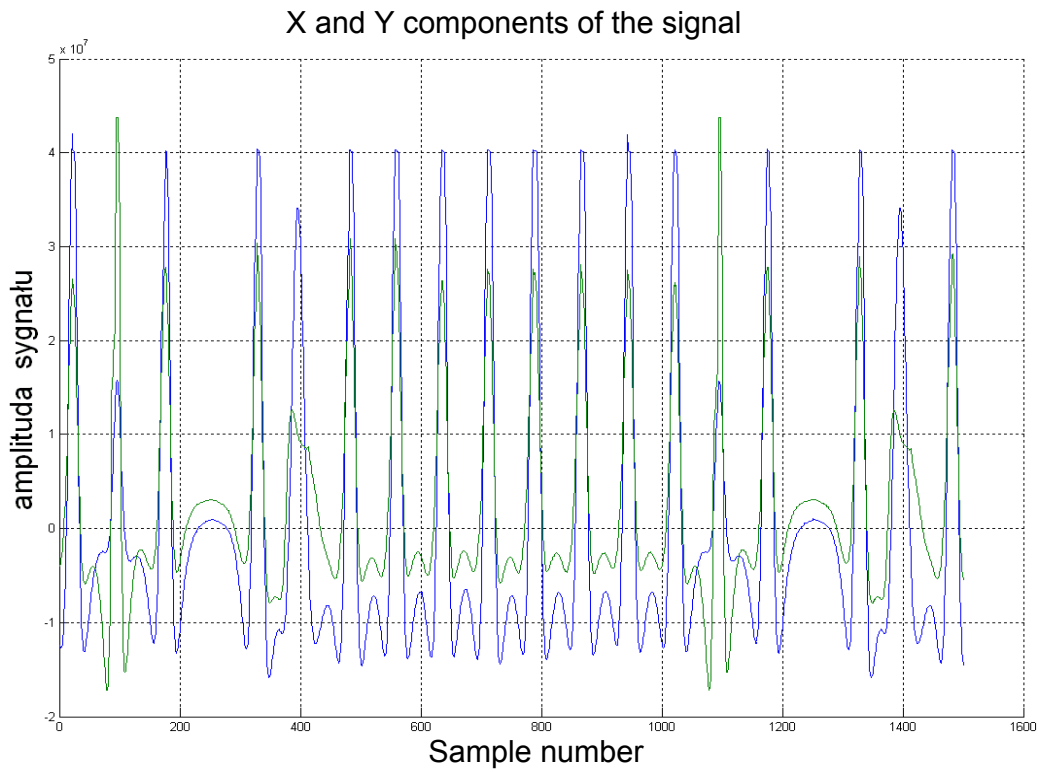


Fig. 9. Signals from the two coils of the sensor (the setting angle of the sensor is 0°). X component waveform is green and the Y component is blue.

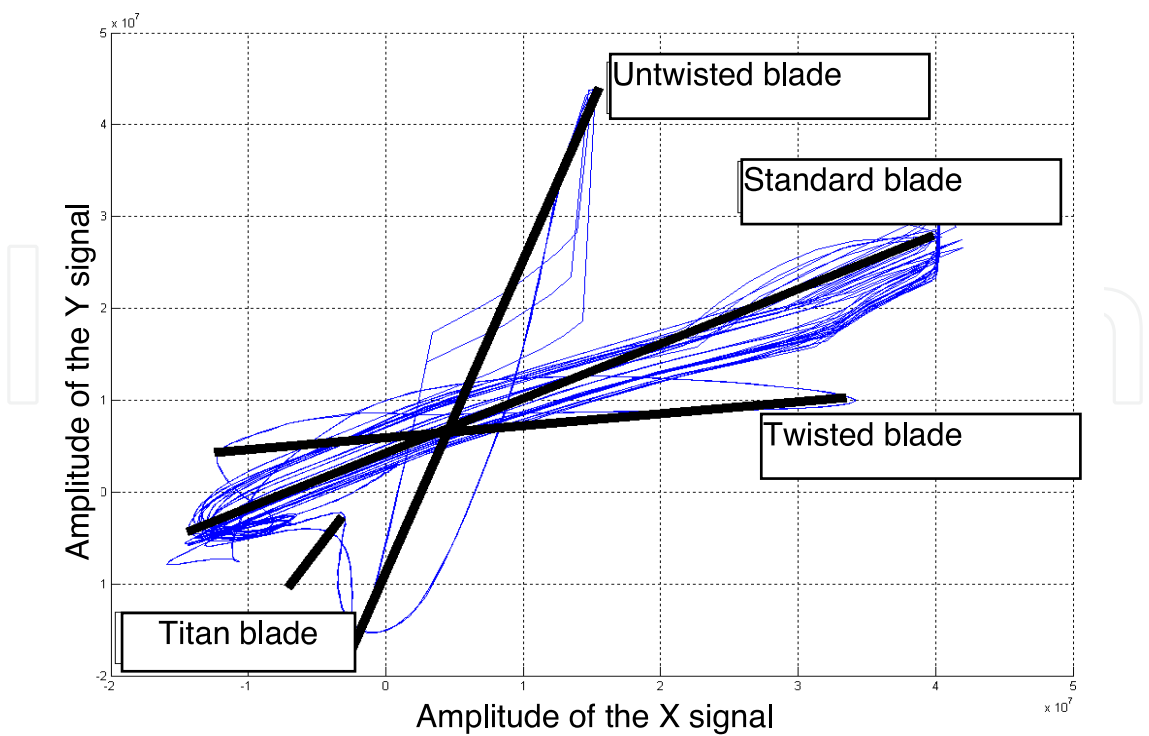


Fig. 10. The graph for arrival angles of blades of the disk as shown in Fig. 8

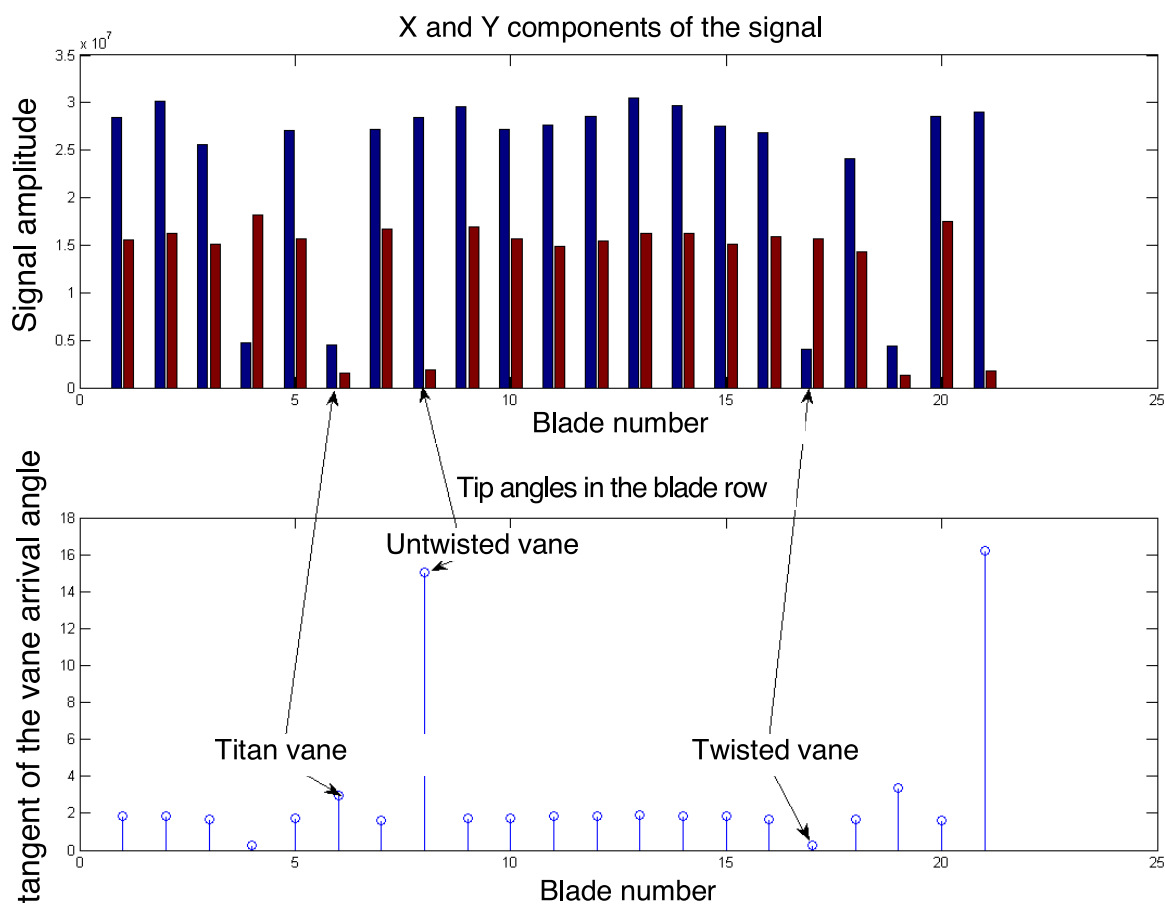


Fig. 11. Component amplitudes of signals and the blade arrival angle

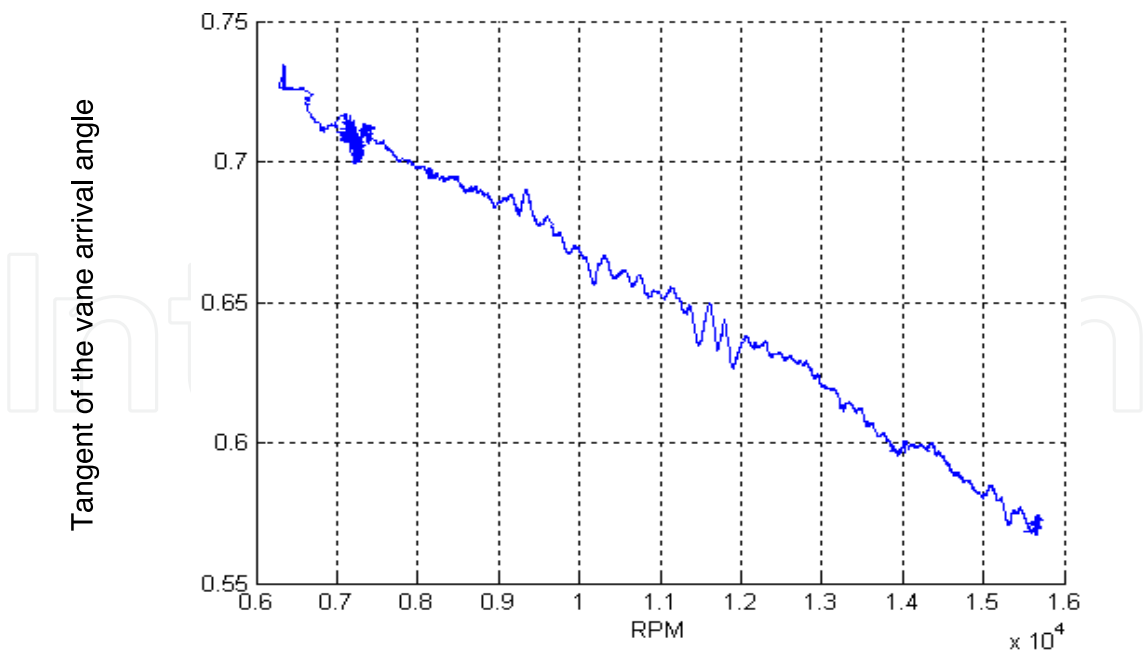


Fig. 12. Calculated tangent of the arrival angle for a selected blade of turbojet as the function of the rotational speed

6. Estimation of rotor unbalance

The following paragraphs comprise results of concept developments, where the signal received from the inductive sensor would be used for measuring the unbalance. Two inductive sensors with the transverse field were installed in the rotation area of blades with the initial clearance of 1 mm. Then, a series of tests was carried out when controlled unbalance was introduced to the 7th stage of the compressor. The signals received from both sensors were conditioned with use of the same circuits and then recorded (Fig. 13 and Fig. 14). One of the sensors was dedicated for the tip timing method whilst the second one was

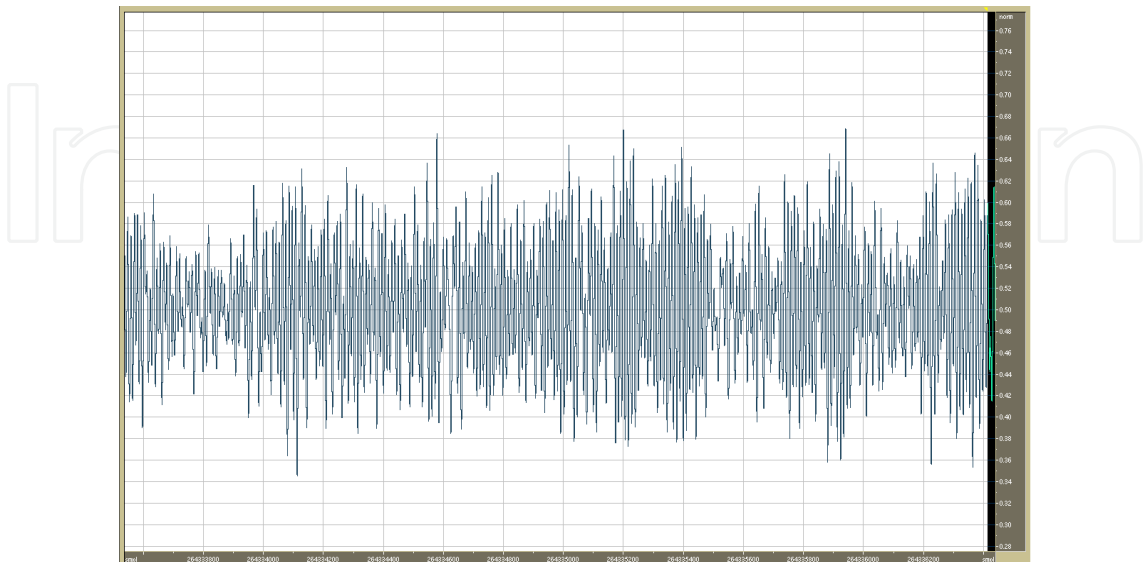


Fig. 13. Signal from the tip clearance (TC) sensor for blades of the engine turbine when the setting for the tip clearance at rest was 1 mm.

meant to measure tip clearance. Measurements of the turbine unbalance were carried out by means of the signal from the second sensor.

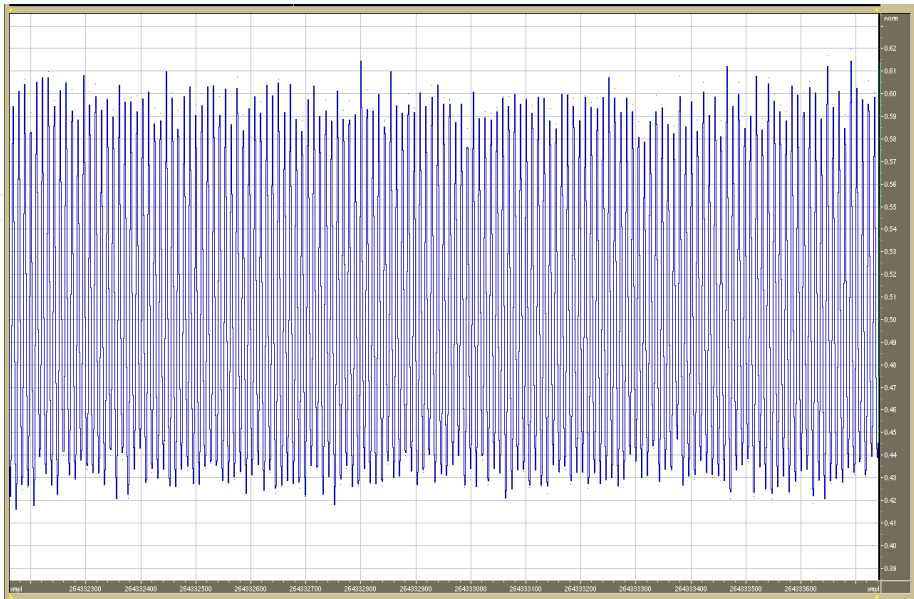


Fig. 14. Signal from the tip timing (TT) sensor for blades of the engine turbine when the setting for the tip clearance at rest was 1 mm.

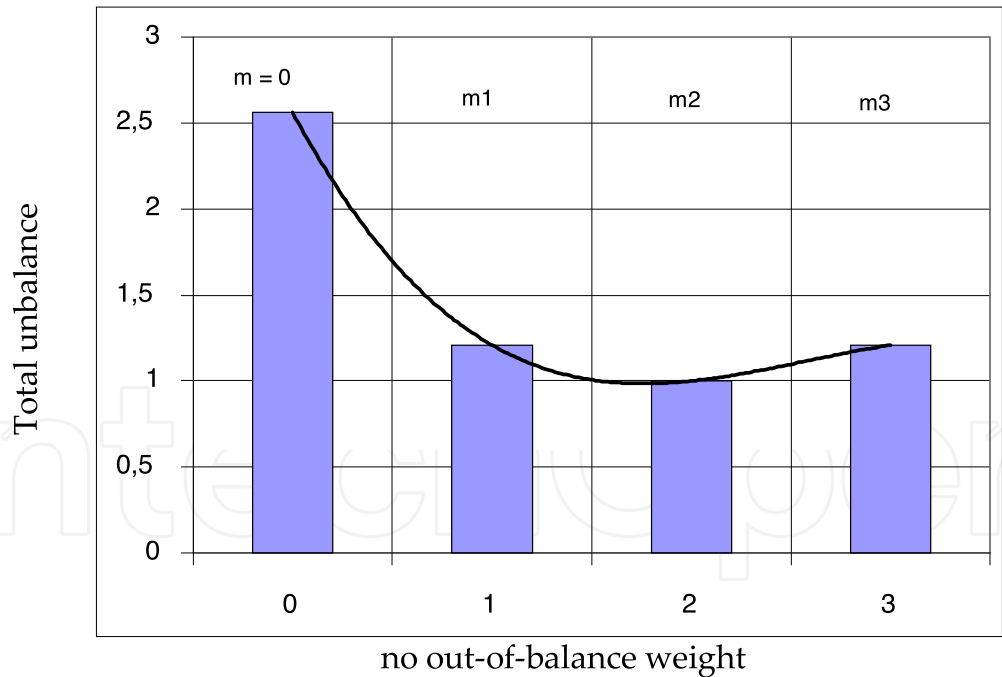


Fig. 15. Effect of the compressor out-of-balance onto total out-of-balance of the turbine

The self-developed algorithms implemented within the Matlab software tool were used to find out how the compressor out-of-balance affects the total out-of-balance of the turbine (Fig. 15). Before tests the compressor was balanced with use of the Schenck balancer. The best balance was achieved when no additional weight was used. Then the appearing out-of-balance of the compressor was measured for the other weights ($m_1 < m_2 < m_3$).

On the basis of the tests one may conclude that the compressor out-of-balance increases in pace with the growth of the add-on weight. The completed measurements made it possible to find out that for the best balance of the compressor (no additional weight) the turbine suffers from nearly three times higher vibrations than for all the other cases. The effect of insufficient load to the bearings onto the turbine operation is manifested here. For the largest weight m_3 , the maximum level of vibrations permitted for that type of engine was not exceeded.

7. Application of microwave sensors

Following subchapters present prototype microwave sensors that are developed in the Air Force Institute of Technology (ITWL) as well as results and conclusions obtained from their testing. These devices represent radars of a very short range, needing special designs of antennas and dedicated methods for signal processing. Particular attention is paid to analysis of the way in which the engine environment and the selected sensor design affect waveforms and parameters of the signal acquired from turbine blades.

The major advantage of microwave sensors is their resistance to contamination by combustion products, relatively good propagation of microwave radiation, both in wet air and in the environment of hot exhaust gases and good reflection of the microwaves by metals. On the other hand, the drawbacks include (Nyfors, 2000):

expensive manufacturing process of the microwave devices, in particular those that are meant to operate at high temperatures and frequencies (above 12 GHz),
the need to tune operation frequency to match dimensions of the equipment and the resulting infeasibility to develop a universal design,
the sensor signal is usually a function of several variables, therefore the sensors need calibration, advanced processing of signals or application of a reference sensor,
limited spatial resolution resulting from quite a considerable wavelength (as compared to optical sensors).

Microwave sensors were already applied to turbine engines for various applications, i.e. to measure the content of wear products in oil inside the gearbox or to monitor operation of the fuel pump (Błachnio et al., 1985).

Microwave sensors intended for measurements of motion parameters of turbine blades have several common features with capacitance sensors based on frequency modulation (Forgale, 2006) and may be considered as an alternative solution.

8. Microwave sensors developed by the Air Force Institute of Technology (ITWL)

Research studies have led to the development of several design solutions dedicated to microwave sensors of blade motion. All the designs are based on the concept of a homodyne detection of microwaves reflected on blade tips. Such a concept was for the first time applied to MUH sensors (Dzięcioł, 2003, 2004).

The microwave homodyne device (MUH - Fig. 16) is made up of a steel and ceramic antenna that is resistant to high pressures and temperatures as well as a generator and detector. The sensor is installed on an engine by means of the antenna screwed onto the socket provided on the engine body. The blades that pass in front of the sensor trip cause retuning of the resonance circuit of the antenna. Consequently, the sensor produces the measurable signal that is the fast-varying component of the output voltage U provided by the microwave detector.

The design that is more suitable for tests of engines is the microwave sensor in the form of a compact homodyne generator and detector (GDH) that can be screwed onto the existing antenna (Fig. 17).

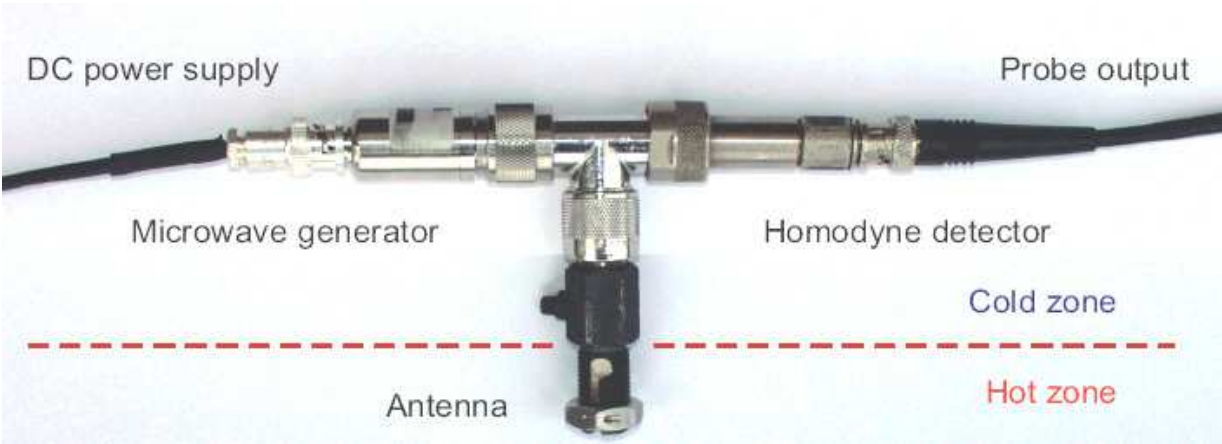


Fig. 16. The MUH microwave motion sensor – the laboratory version made up of coaxial subassemblies connected by means of a tee piece with N-type connectors



Fig. 17. The MUH microwave motion sensor (the version with the GDH module)

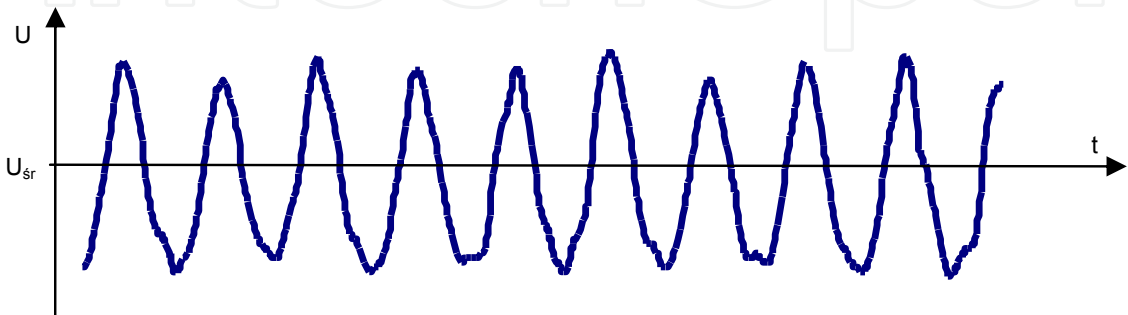


Fig. 18. Model waveforms for the voltage signal acquired from turbine blades with use of the MUH sensor

The following research efforts resulted in the design of a differential antenna (Fig. 19, Rokicki et al., 2007) with the aperture that is made up of two open waveguides, which interact to generate the output signal.

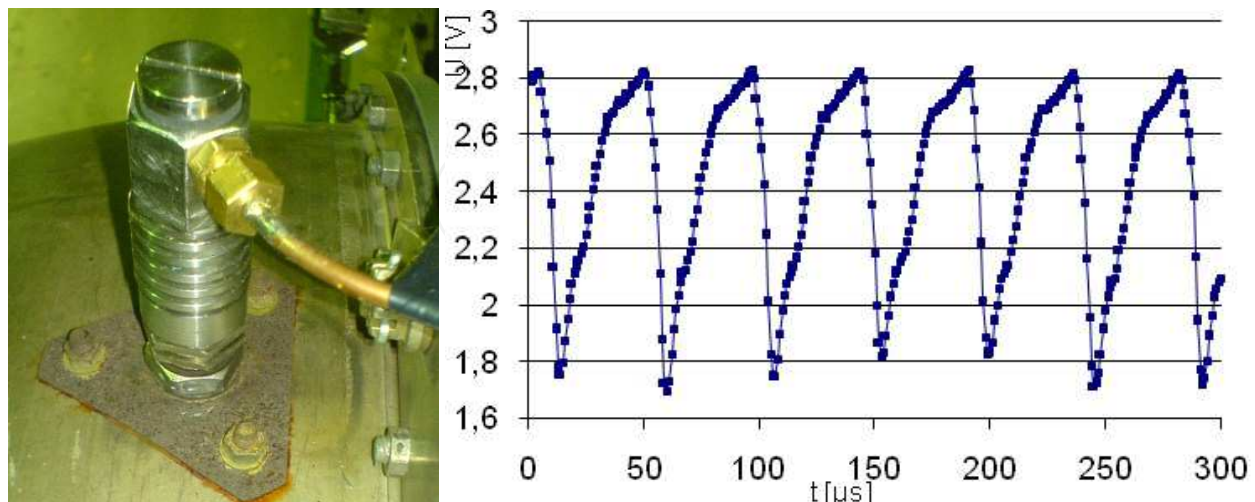


Fig. 19. The ITWL differential antenna installed in the turbine casing and the model signal waveform acquired at the maximum engine speed

9. Overview of exiting solutions for microwave sensors

The issue concerning the ways of employing microwaves for measurements of the blade motion was investigated by several research centres, mostly located in the USA. The device developed by United Technology Corporation (Grzybowski, 1998) operates with the frequency of 20 GHz and is intended for tip-clearance measurement. The sensor from Daimler-Benz (Wegner, 1997) is also dedicated to measure tip clearance and operates with the frequency of 22-24 GHz. It is made up of a metallic and ceramic antenna and an electronic module incorporating microwave monolithic integrated circuits (MMIC) based of gallium arsenide (GaAs).

The device of Siemens (Wagner, 1998) is intended for monitoring of vibrations of steam turbine blades, The generator operates at the frequency of about 24GHz that can be adjusted by its control circuit according to the actual distance to the blades. Pulses generated by passing blades are initially processed by the DSP circuit and then analyzed by a computer with the appropriate software for the discrete phase method.

The solution from Radatec (Geisheimer et al., 2002; Holst, 2005) ($f = 5.8$ GHz) is distinguished by application of two detectors with the mutual phase shift of 90° , which makes it possible to measure both the in-phase and the quadrature components of the wave vector. Comparison between the both signals makes it possible to unambiguously measure the tip clearance by elimination of the effect of received microwaves on the amplitude.

The EHDUR device of BAE Systems is dedicated to detect foreign bodies in the engine inlet and to identify the objects that may damage the engine. Initially the motion of blades was considered by the designers as disturbance and filtered out of the input signal (Shephard et al., 2000). More recently the studies were initiated to analyze blade vibration of fan blades on the basis of the signal generated by a sensor installed at the inlet.

The prototype device developed at the Industrial Telecommunication Institute (PIT) (Fig. 20) developed in collaboration with ITWL offers excellent parameters of both the generator and

the antenna circuits. The antenna and generator /detector modules are detached and connected by means of a semi-rigid cable.



Fig. 20. The antenna for the PIT microwave sensor

10. Operation principle of the microwave sensor

Non-contact measurement of blade vibration requires the sensor providing electric pulses in the moments when blades cross the measuring point of the antenna (Zablockij et al., 1977). Microwaves, emitted by the antenna, return to the circuit after having been reflected by tips of rotating turbine blades. The resulting signal, obtained as a result of the phase-sensitive detection of microwaves, represents the momentary location of blades (Fig. 21). The way in which the signal from the MUH sensor is generated, is outlined in the thesis (Dzięcioł, 2003). Under real working conditions of the turbine, operation of the microwave circuit is affected by a number of factors that are hard to describe in quantitative terms. The detailed analysis of the sensor operation principle is not within the scope of this study, but understanding of the specific features is necessary to analyze the received signals.

Modelling of the sensor operation requires the solution of the Maxwell equation, which is carried out with use of numerical methods by means of the dedicated software. It is really difficult to achieve exact results of simulation due to the fact that some parameters that are necessary for calculations cannot be determined with sufficient accuracy, especially, when operation of the sensor at high temperatures, typical for gas turbines, is anticipated.

Specific operation of the sensor during engine tests can be analysed by means of simple models that are known from physics and electrical engineering, such as a transmission line, a dipole, interference of waves, etc., Application of such models is limited due to the fact that dimensions of the circuit and the measured distances are comparable with the wavelength or they are even shorter. The optimum method for development of the microwave sensor for turbine environment must incorporate intense aid of the computer simulation methods to the experiments.

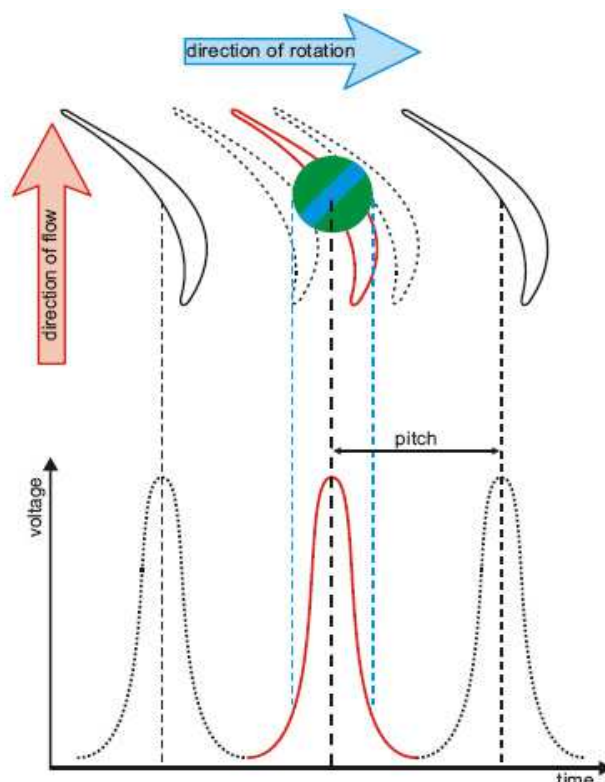


Fig. 21. The principle for pulse generation by the MUH motion sensor. For antennas with low spatial resolution with the range that covers signals from 2 – 3 blades the pulses may interfere.

The structure of the employed microwave circuit is made up of two major parts:

- closed – waveguides that are included inside the sensor,
- open – turbine gas path with blades rotating inside.

The closed part (except for the sensor antenna) is located in the cold area that enables steady operation of the incorporated components, as the temperature alters their parameters only slightly. On the other hand, electromagnetic parameters of exhaust gases that fill the turbine channel may vary depending on locations and changes of the engine operation range.

10.1 Operation principle of the antenna

To enable the radiation to reach the blades, the steel-ceramic antenna must perform as the component that matches the microwave circuit to the space when motion of the rotating parts takes place. Due to the temperature effect onto the antenna, its actual parameters, when it is mounted on the engine, are different from calculated ones. The level of usable signal is lower for higher rotation speed values, as a significant deal of the generator power is already reflected and cannot be emitted.

Microwaves are reflected not only by blade tips, but also by other metal components. It is difficult to limit the sensitivity of conventional antennas exclusively to the objects of selected type (shape). Generally, it is only possible to set up the antenna polarity and provide the directional characteristics.

In the case of the sensor intended for monitoring the motion of blades, the distance to the object (tip clearance) is low as compared to the wavelength. The examined object is no longer passive with respect to the antenna, but begins to interact with it. In the case of the

MUH sensor, the blade is a part of the antenna resonance circuit and arriving of the blade to the antenna field retunes the circuit, which is reflected in the signal received from the detector (Dzięcioł, 2003). The effect was also observed in the tested PIT sensor.

The differential antenna (Rokicki et al., 2007) emits nearly no waves into the surrounding space, but reacts to the presence of objects right in front of it (1-2 mm). Consequently, a very high spatial resolution is achieved, which is confirmed by the signal with a very short fall time and low duty factor of the pulses.

10.2 Amplitude of pulses

The sensor employs the homodyne (synchronous) detection of microwaves, therefore the output voltage U_{wy} depends on the phase shift φ between the received and reference signals:

$$U_{wy} = a A \cos \varphi, \quad (2)$$

where:

A – amplitude of the received wave,

a – proportionality constant.

As the wavelength is about 3 cm, the differences in the tip clearance for individual waves (typically less than 1 mm) result in only insignificant changes of the phase, which can be observed in the received signal. In fact, besides the phase relationships, amplitude of the obtained pulses is also affected by the power of the received signal (Dzięcioł, 2003). The pulse amplitude not only depends on the tip clearance, but also on the cross section area of the blade and on local phenomena that may attenuate propagation of microwaves. Exact separation of all these factors is impossible in the existing circuit.

Variations in the distance between the antenna and the blades (tip clearance) due to changes of the engine operation range are insignificant as compared to the wavelength and should not significantly attenuate the signal level. When the tip clearance is altered by 0.5mm, the distance covered by the wave is doubled:

$$\Delta x = 2 \cdot 0,5 \text{ mm} = 1 \text{ mm} \quad (3)$$

From the equation for the stationary wave, the following can be calculated (under the assumption that the wave length is $\lambda = 3 \text{ cm}$, just as in the air):

$$A = \cos(2\pi \Delta x / \lambda) = 0,978 \quad (4)$$

The voltage output signal from the microwave detector (after elimination of the constant component) is proportional to the amplitude A of the received wave, so the relative alteration of the output signal is:

$$\Delta U = 2,2 \% \quad (5)$$

For real turbine channels the wavelength may vary from one location to another or in time, in pace with the electric permittivity of gases due to pressure and temperature variations.

10.3 Wave effects

Propagation of radiation takes place in the field near the antenna, so wave effects, such as diffraction, interference, the Doppler effect, as well as reflections from other objects, not only from blade tips, substantially influence the received signal. All the effects deteriorate operational parameters of the sensor, chiefly the spatial resolution and the level of usable signal.

In the case of the simplest antennas (open waveguides) one can assume that points that belong to the antenna aperture can be considered as sources of spherical waves (Fig. 22). The field that is generated in the channel of an immobile turbine constitutes the system of stationary waves that resembles interference images. The resulting signal that is received by the antenna is the superposition of signals reflected on blade tips, but also on vanes, blade side surfaces or disk surfaces, in particular when blades are short and densely spaced.

The wave that is reflected on the area between the blades (unless it comes with the phase opposite to the generator) is also received and must be considered as the parasite component of the usable signal – increases the background level and reduces the signal/noise ratio of blade pulses. To avoid undesired reflections the antenna design must guarantee a possible short range, not much exceeding the values of the tip clearance (below 5 mm). The aperture diameter should be comparable with the thickness of the blade leaf and much shorter than the distance between two neighbouring blades. In practice, it is very difficult to meet all these requirements. Development of a miniature and selective antenna requires different design approach and the application of untypical components and expensive technologies.

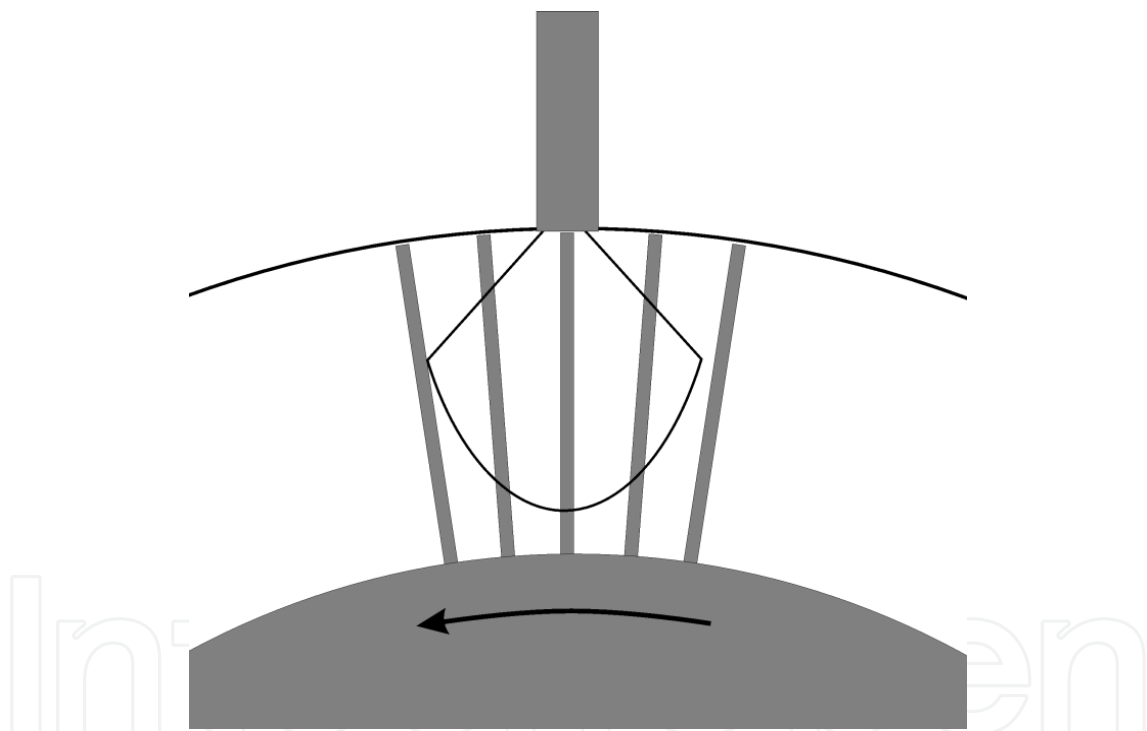


Fig. 22. The antenna with excessively large range. The area is marked where reflections may possibly interfere with the output signal of the sensor. The proportions are maintained between the antenna diameter on one side and dimensions and layout of turbine blades on the other side.

Influence of the Doppler effect can be neglected under the assumption that blades move perpendicularly to the probing wave. In practice that assumption may not be fulfilled and the effect of the blade velocity onto the output signal from the sensor is observed. The lack of possibilities of separating the effects of various factors and physical phenomena (location, speed, attenuation) on the output signal of the device restricts its usefulness and applications.

11. Processing of signals received from blades

11.1 Introduction

All measuring systems that have been in use so far employ magnetic or capacitance sensors combined with analog triggering circuits. Such systems, even after updating, are incapable of providing the appropriate values of parameters, necessary to measure vibrations of gas turbine blades. Signals from dedicated microwave sensors as well as from capacitance ones with frequency modulation can guarantee that the desired resolution and reliability are achievable. Due to the shapes of received pulses, such sensors require application of dedicated methods for signal processing. In this study the method that enables determination of amplitudes and frequencies of turbine blade vibrations as well as the tip clearance by analysis of the digital signal received from sensors is proposed. The newly developed algorithms, in spite of the fact that they are chiefly dedicated to signals from microwave sensors, were also successfully tested for signals received from compressor blades by inductive and eddy current sensors.

12. The concept of signal processing

Information about movements of individual blades is obtained in the form of a series of samples that make up the blade timings with resolution (quantization) defined by parameters of the analog-to-digital (A/D) converter (Fig. 23). Shapes of the received pulses depend on the sensor type and geometrical parameters of the blade row. Tip deflection is reproduced for each blade in the measurement waveform received from the microwave sensor, primarily by shifting the pulse down the time scale with regard to the expected location. Extraction of that information from the sampled waveforms with the required resolution makes it possible to measure blade vibration.

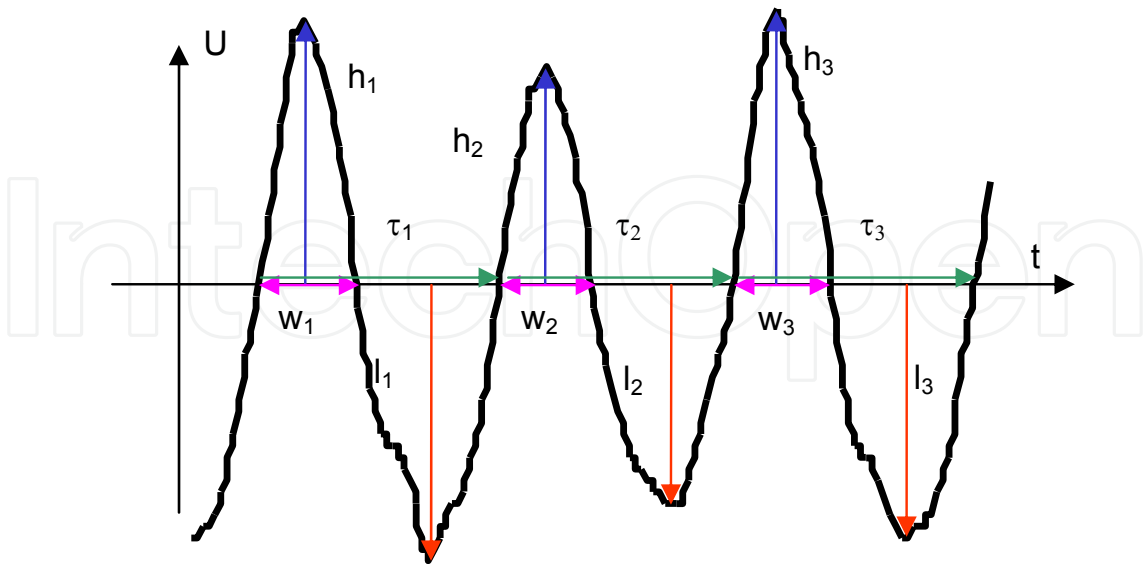


Fig. 23. Parameters of subsequent pulses acquired from turbine blades with use of a microwave sensor: amplitudes of peaks h_i and background level l_i (with regard to the reference voltage), pulse width w_i and time gaps τ_i between the moments of signal reception from subsequent blades.

To determine momentary deflections of the selected blade, it is necessary to unambiguously identify fragments that are associated solely with the blade movements and to extract that information from the sampled waveform in order to obtain the corresponding pulses. Then these pulses can be described by means of such parameters as the amplitude, phase and width (Fig. 23) that are measured against the selected reference voltage. After these values are determined for all pulses and assigned to specific blades, it is possible to convert the measurement waveform (in the form of samples) into a sequence of ordered matrixes of real numbers that correspond to location of blades (radial and angular coordinates) for subsequent revolutions (Fig. 24). These numbers serve as the input data for further vibrations analysis of blades and the rotor unit.

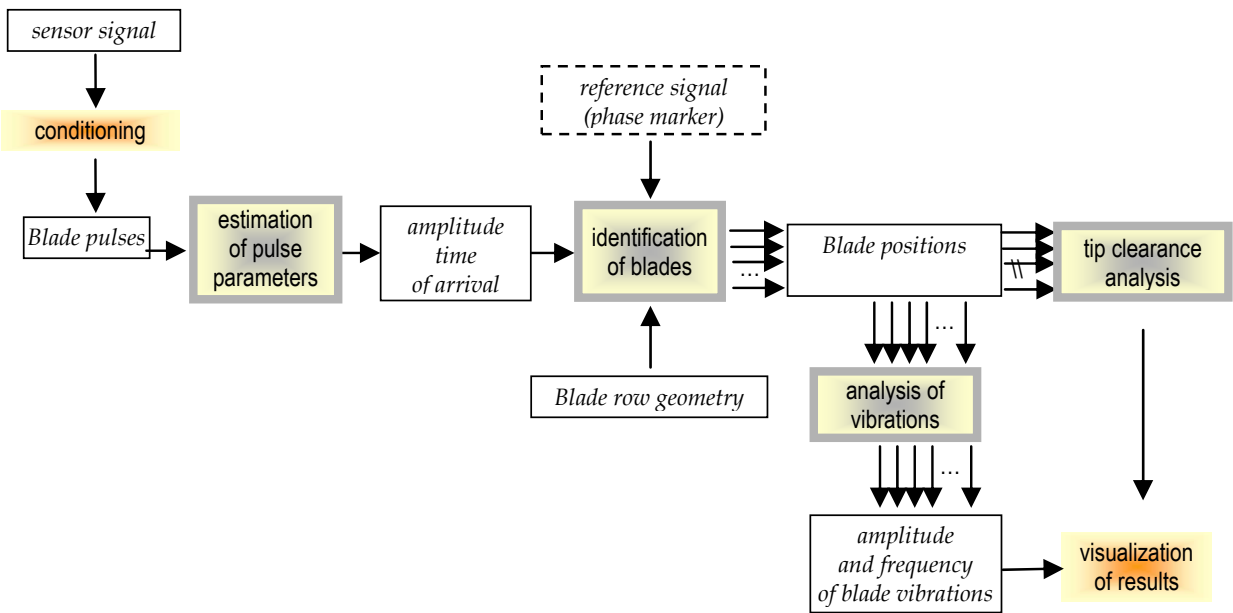


Fig. 24. Procedure for processing of signals acquired from blades

13. Conditioning and recording of signals

The voltage signal from a microwave sensor has usually a constant component that corresponds to the working point of the detector. That constant component is usually much higher than the fast-changing signal received from blades. Prior to amplification of the output signal, it is necessary to eliminate the constant component or the compensate it. The gain value must be appropriately adjusted so that the dynamic range of the converter would be utilized in the best possible way and signal cropping could be avoided.

To locate pulse peaks with sufficient accuracy the sensor signal must be sampled with high frequency, preferably a dozen times higher than the maximum frequency of blade arriving. This recommendation results from the fact that the pulse peak usually takes less than 30% time assigned to a single blade and at least several samples are necessary to reproduce the peak shape. Only the high oversampling degree of the input signal makes it possible to measure blade vibrations, lower sampling frequencies enable merely to measure the turbine rotation speed.

Results obtained by continuous sampling of the input signal with the constant frequency of f_s were recorded on a hard disk, which was possible owing to relatively high capacities of mass storage memory units of contemporary computers. In the target on-board measurement system the hardware resources must be used economically, thus sampling shall cover only those fragments of pulses that convey information about momentary positions of blades.

14. Measurements of pulse parameters

The basic principle of non-contact measurements of blade vibrations is determination of the moments when subsequent blades arrive to the measuring point of the sensor. The fundamental precondition to carry out measurements correctly is to reproduce such moments accurately by the output signal of the sensor (by the conventional phase of pulses). To determine that phase, it is mandatory to maintain unaltered shapes of pulses provided by the sensor, whilst the pulse amplitude and width may be altered proportionally. Due to the aerodynamic shape of the blade tip and sophisticated principle of the sensor operation, accurate indication of the point that belongs to the measurement waveform and that corresponds to the conventional moment of the blade arrival (Witoś, 2007) is a really non-trivial task. For inductive sensors, the presence of a blade at the measuring point is associated with transition of the falling edge of the pulse via the voltage level of 0V (Fig. 25). In the case of microwave sensors it is assumed that the presence of a blade at the measuring point corresponds to the pulse peak, i.e. the local extreme for the voltage waveform (Fig. 26). Depending on the signal polarization it can be either the signal minimum or maximum.

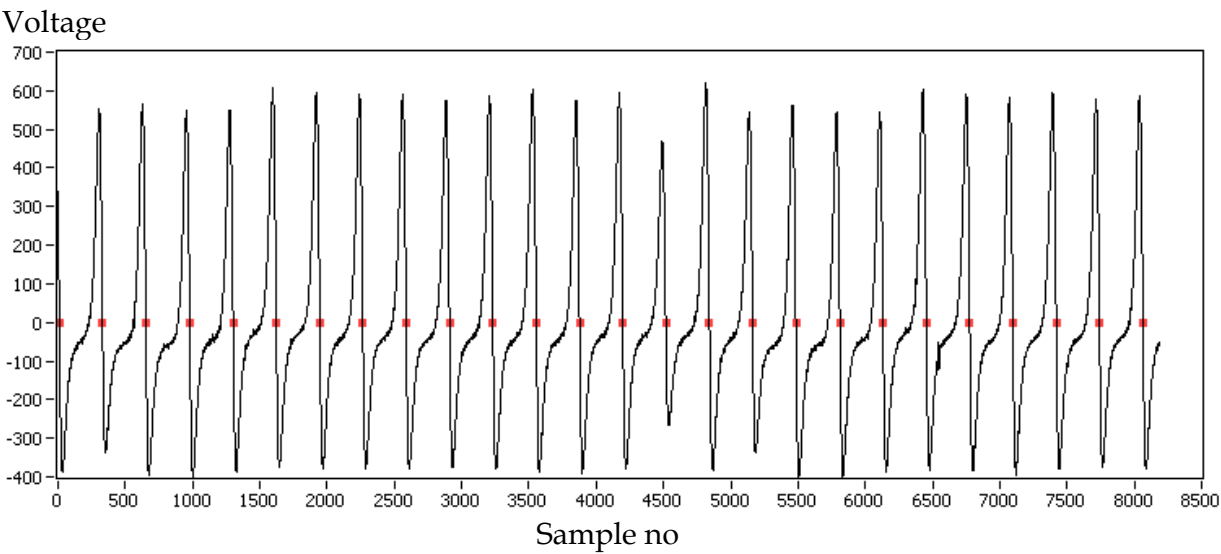


Fig. 25. Measurement of the blade arrival moments with use of digital processing of signals from an inductive sensor. Data acquired from 15 blades of the 3rd compressor stage of a helicopter engine. Localization of transition moments when falling edges of pulses acquired from blades cross the voltage level of 0V (with the hysteresis $\Delta U = 100$ normalized units) was carried out in the domain of sample numbers (the integer variable). Resolution for time measurements is directly associated with the sampling frequency $f_s = 300$ kHz.

The sampled signal received from the sensor is quantized in the domain of amplitude and time. Typical algorithms for processing digital signals are based on samples in the domain of time units for the clock series that synchronizes the sampling process. If no interpolation is applied, the achieved resolution for time intervals is equal to the sampling period.

It is really expensive to increase the sampling frequency up to the value that guarantees that the desired resolution necessary to measure vibrations of blades is achieved, in particular when the sampling results are entirely recorded on a mass storage unit for further analysis. The data acquisition module NI DAQPad 6070E enables sampling with the maximum possible frequency of 1,25 MHz. The achieved resolution in time domain ($\delta t = 0,8 \mu s$) is many times lower than the one for measurements of digital sequences with use of counters and the dedicated PCB module NI 6602 with the clock frequency of 80 MHz as well as for the SPL-2b recorder (10 MHz).

In order to achieve the time resolution exceeding the sampling period δt and avoid quantization, it is necessary to convert a sequence of samples into a continuous representation, at least within the vicinity of local extremes (pulse peaks). The linear interpolation, although much simpler for implementation, poorly reproduces the nature of the sensor waveform. It is why the walking adjustment of a sample clusters was applied, where the clusters included several measurement points and the waveform was approximated with the third degree polynomials with use of the least square method (Fig. 26). The obtained sequence of polynomials appears very similar to the original analog signal.

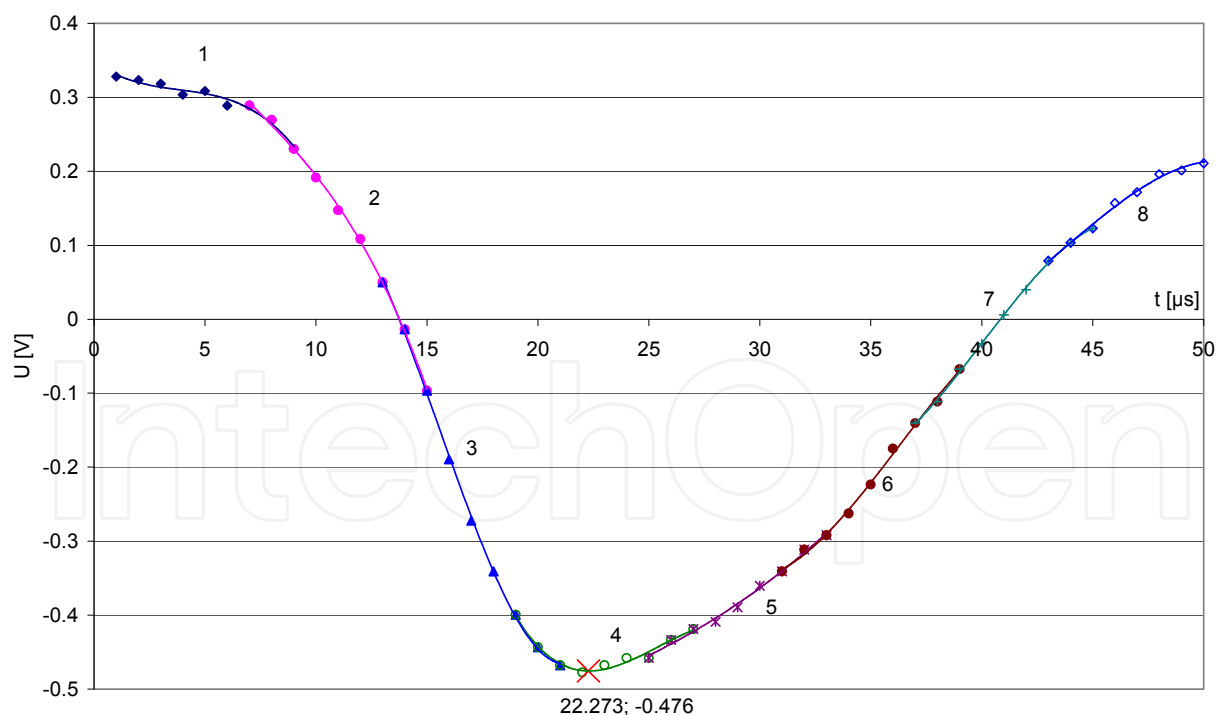


Fig. 26. The polynomial approximation result of a model pulse acquired from blades with use of a microwave sensor. Sampling frequency $f_s = 1$ MHz; window width $w = 9$. Exclusively the derivative of the polynomial no. 4 has zero points, where one of the extremes determines coordinates of the pulse peak, marked with the 'X' sign.

The least square method is commonly used to match the finite set of measurement points to a theoretical curve. The presented procedure analyzes the data one sample after another and calculates coefficients of the third degree polynomials. Such a procedure is beneficial due to the possibility of implementing it in a real time mode. There are other algorithms available that are meant for similar tasks (e.g. spline interpolation), but they all require the preparation of a finite set of data and determination of boundary values with further awaiting until the data processing is completed.

Determination of the polynomial coefficients makes it possible to calculate the first and second derivatives and to check whether the condition of a local extreme is fulfilled. It is possible to speed up the data processing procedure when the analysis is limited exclusively to the points with amplitudes that fall within the predefined limits (threshold voltages).

Accurate determination of arrival times of blades substantially depends on correct selection of the sampling frequency and the width of the window that defines number of samples that are selected for the single approximation. When four samples are selected, the obtained curve must incorporate these points, i.e. the polynomial interpolation shall be applied. When more than four samples are used the applied approximation is a form of the signal filtration. The window width is adjusted to the noise content in the sensor signal (signal to noise ratio) and the number of points used to reproduce the blade waveform.

The outlined method makes it possible to determine location of pulse peaks (Fig. 27) with the resolution that is several times higher than the sampling frequency. Times of blade arrivals obtained with use of the proposed method have the form that is appropriate to determine amplitudes and frequencies of blade vibrations by means of the discrete-phase method (tip-timing) and also its differential version, used when no one-per-revolution signal is available (Witos, 1994).

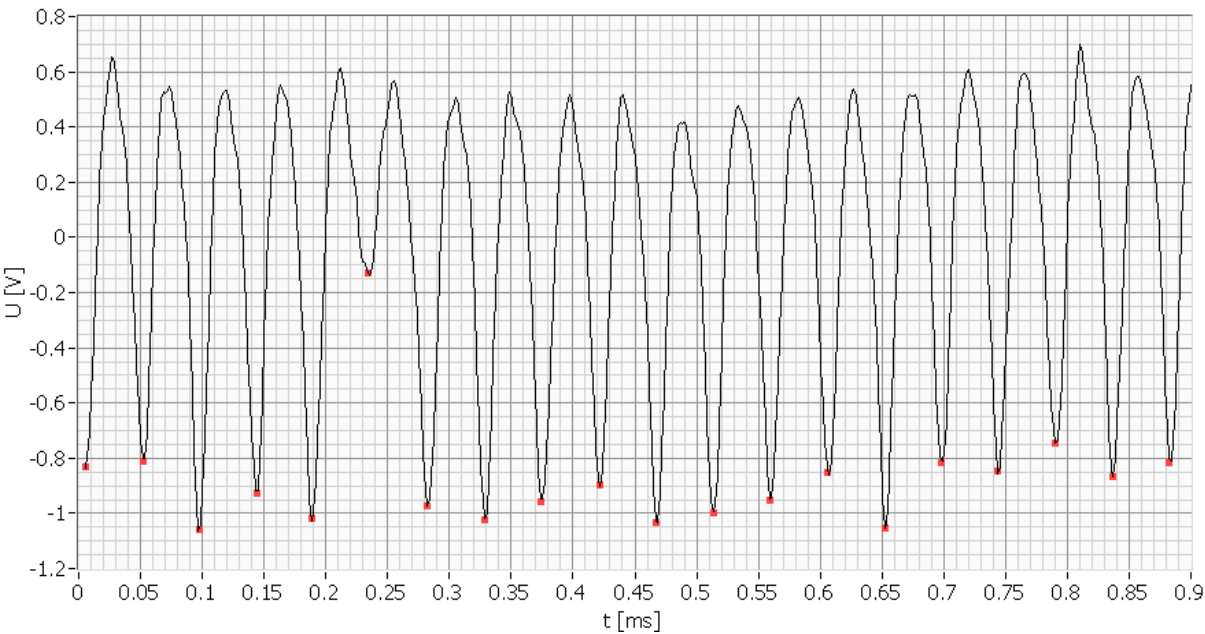


Fig. 27. The example that explains how to determine pulse peaks by means of the newly developed method. The signal from the GDH sensor was used for the rotation speed of $n = 15500$ rpm. One blade generates the pulse with lower amplitude since its tip had been already trimmed.

15. Vibration measurements for turbine blades

Below there is an example of the application of the proposed method to the signal from the ITWL sensor, where the signal was recorded with the sampling frequency of $f_s = 1$ MHz. Then a fragment of the signal recorded for deceleration of the engine (Fig. 28) was subjected to the analysis with use of the discrete-differential method. The results obtained for the spacing error should be considered as trustworthy since the positions of blades are recognized on the basis of waveforms with high fidelity (exceeding 90%). Blade vibration alter blade spacing by no more than 1-2%. Deviations of the blade spacing in relation to average positions, resulting from non-uniform deployment of blades on the blade row, are of the same range. In order to illustrate blade vibration on the cumulative graph, the spacing error is magnified by several dozen of times with elimination of its constant value (Fig. 31). Consequently, it was found out that the vibration level of blades usually fits within the boundaries $A < 0.4$ mm.

For the rotation speed of $n \approx 8600$ rpm the static displacement of blades was observed for the entire blade row. The phenomenon took about a half of a second and affected the amplitude of received pulses (Fig. 32). It resembled synchronous vibrations of blades with the amplitude $2A < 0.6$ mm, but it rather was an effect of a radial or axial movement of the entire turbine. No symptoms of similar turbine behaviour could have been observed for other recorded signals.

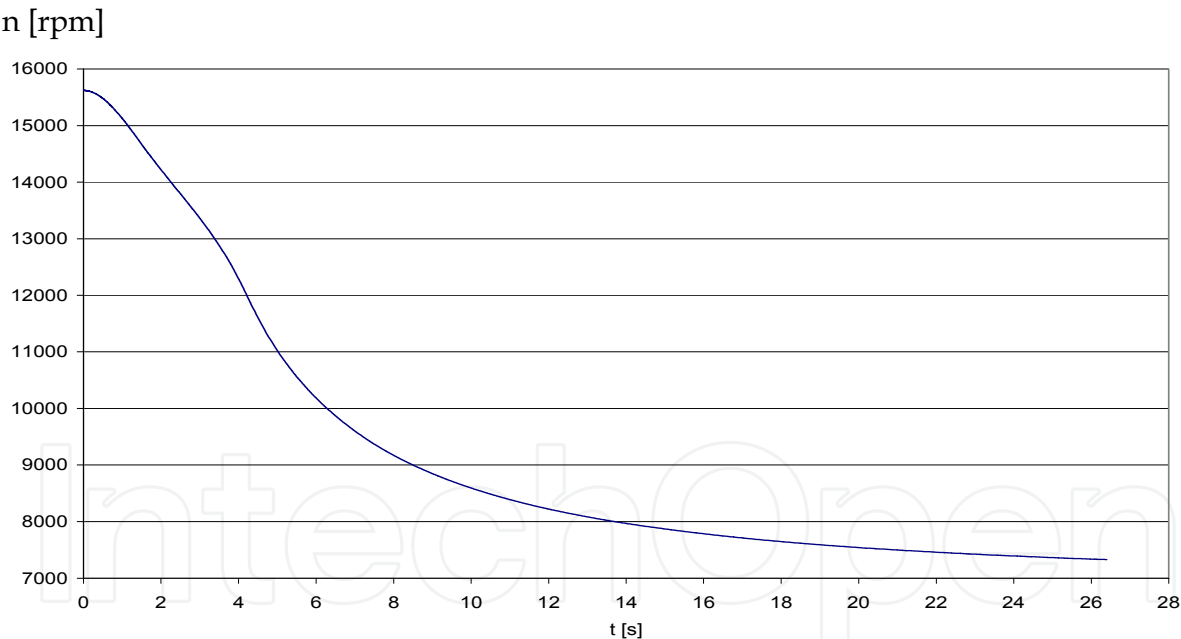


Fig. 28. Recorded deceleration of the tested engine for which vibration measurement of turbine blades is demonstrated.

For most of blades the response of a blade to the input function for the basic form of transverse vibration is visible for the 6th synchronous rotation speed for the rotation speed range from 12,000 to 13,000 rpm. For blades with higher frequencies of free vibrations, the response to the 5th synchronous speed is not visible as it falls outside the range of maximum permissible speed values. The responses for the seventh and eighth synchronous speed have insufficient amplitudes and cannot be identified for all blades. The responses for higher synchronous speeds occur for the rpm values below the idle run.

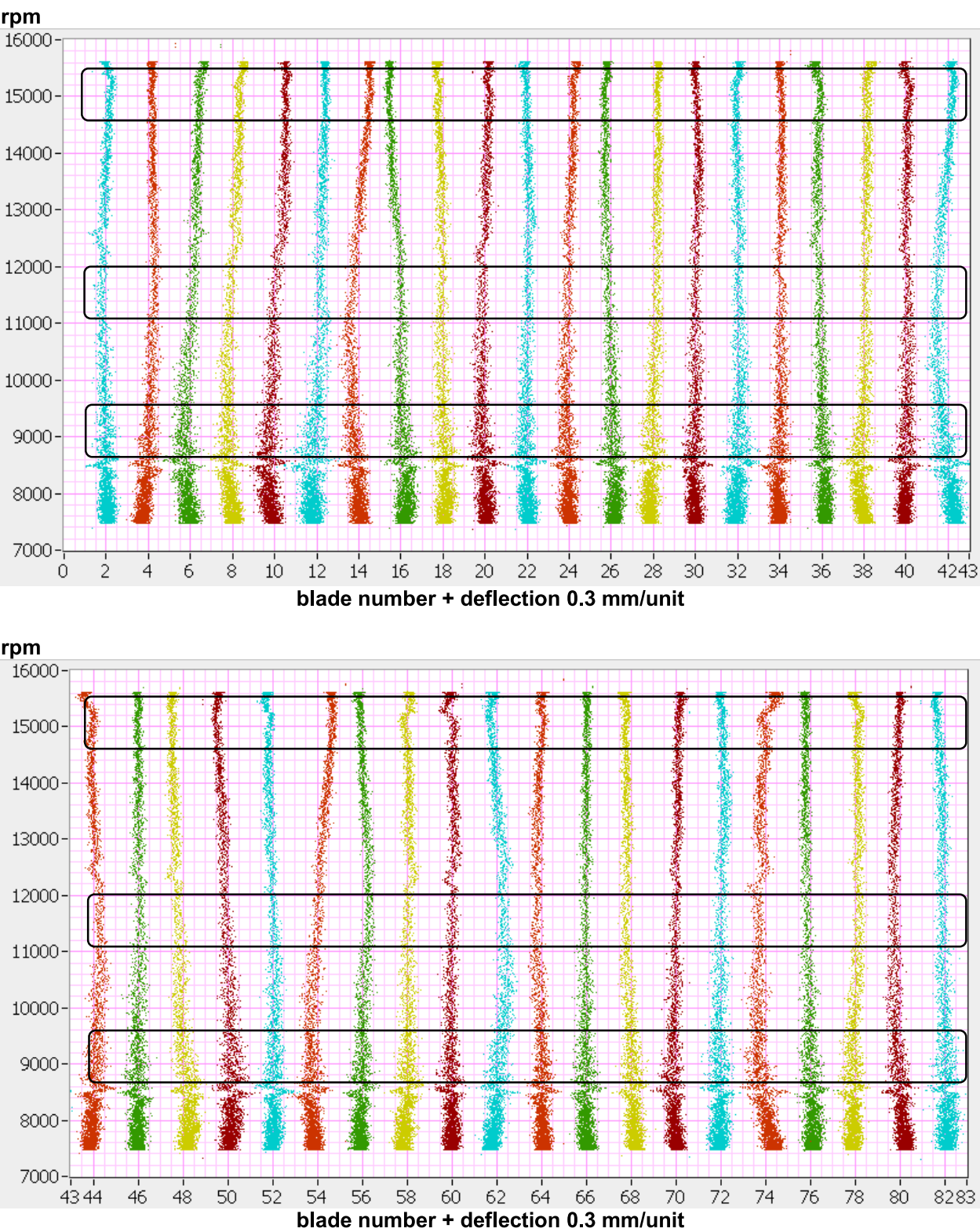


Fig. 29. The relationship between vibration amplitude of turbine blades and rotational speed during the engine deceleration. The image presents differential deflections for even blades

For selected blades the method proposed by (Zablockij et al., 1977) was used to determine frequencies of synchronous vibrations enforced by the 7th, 6th and 5th multiplicity of the rotation speed (Fig. 31, Fig. 32). Then the obtained frequencies were applied to plot the

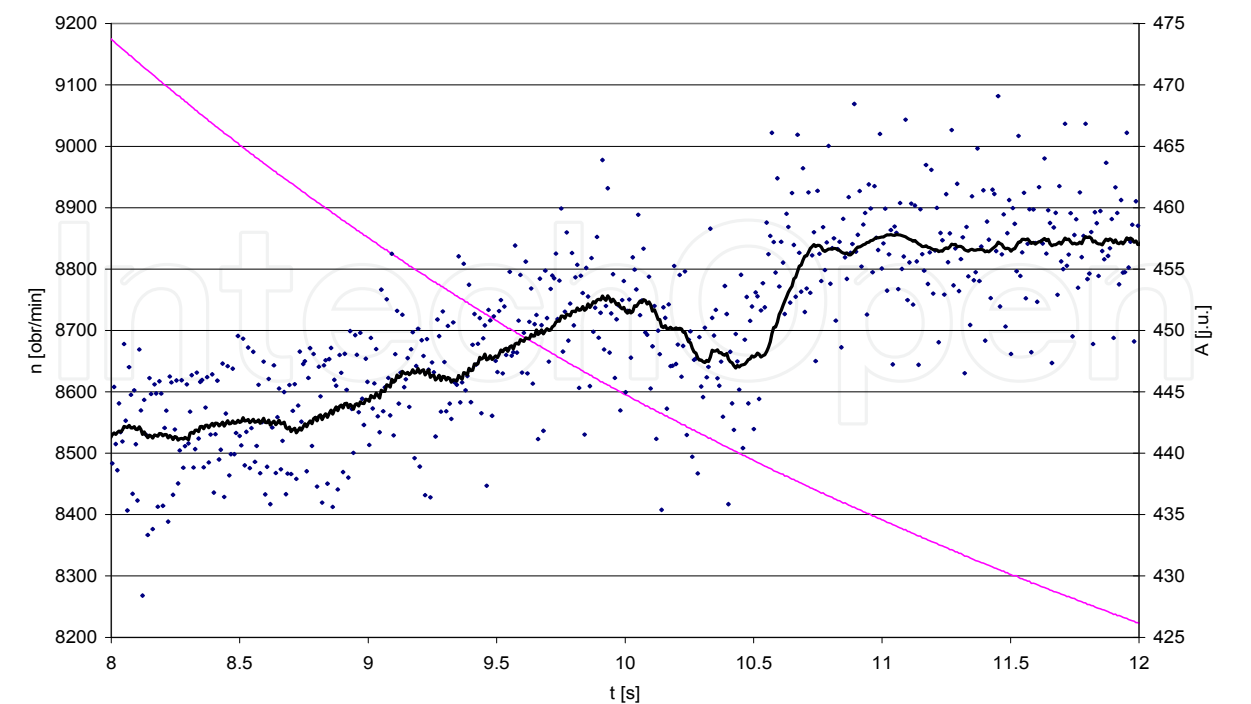


Fig. 30. Amplitude of pulses acquired for the blade no. 1 in the function of time. The graph presents also the trend line (the moving average for the window width of 20) and variation of the rotational speed.

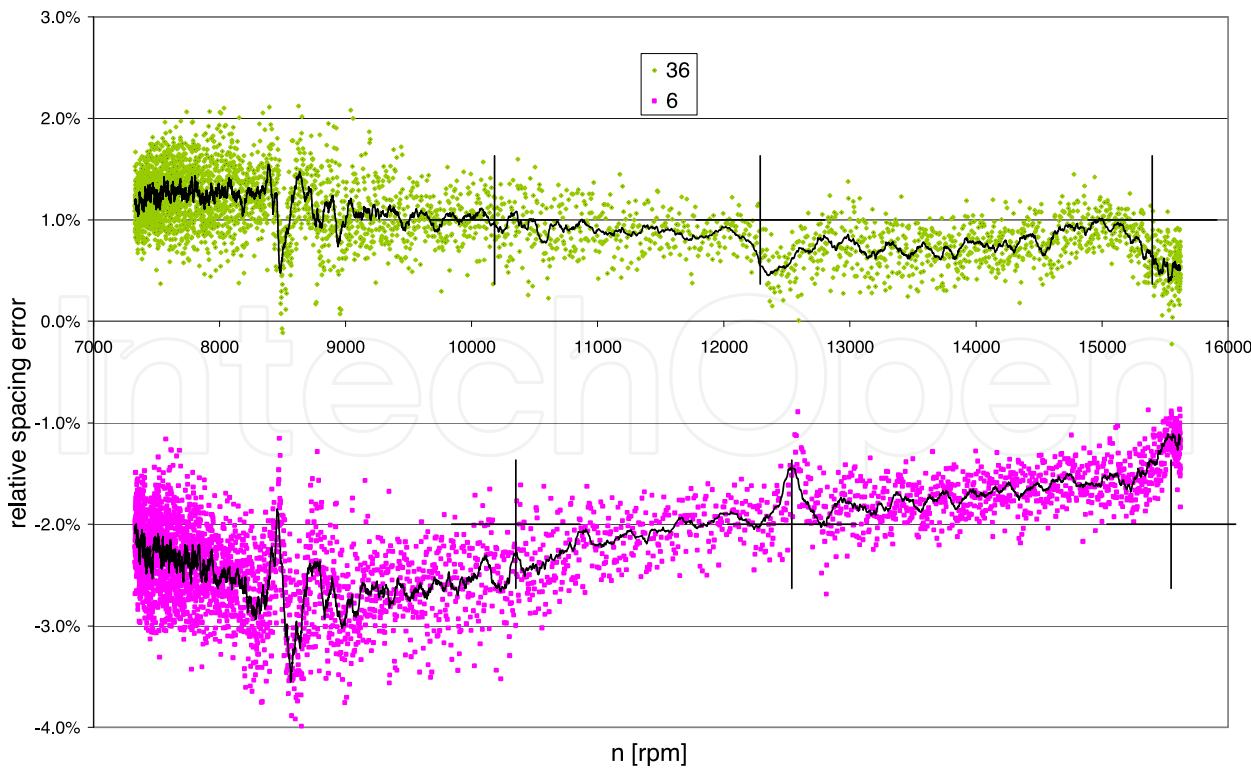


Fig. 31. The relationship between the spacing error and the rotational speed for the blade no. 36 and 6. The image presents the resonance effect for the 7th, 6th and 5th engine order.

Campbell graph (Fig. 33). The achieved relationship between the frequencies of blade vibrations and the rotation speed is quite similar to the results obtained by manufacturer of the blades.

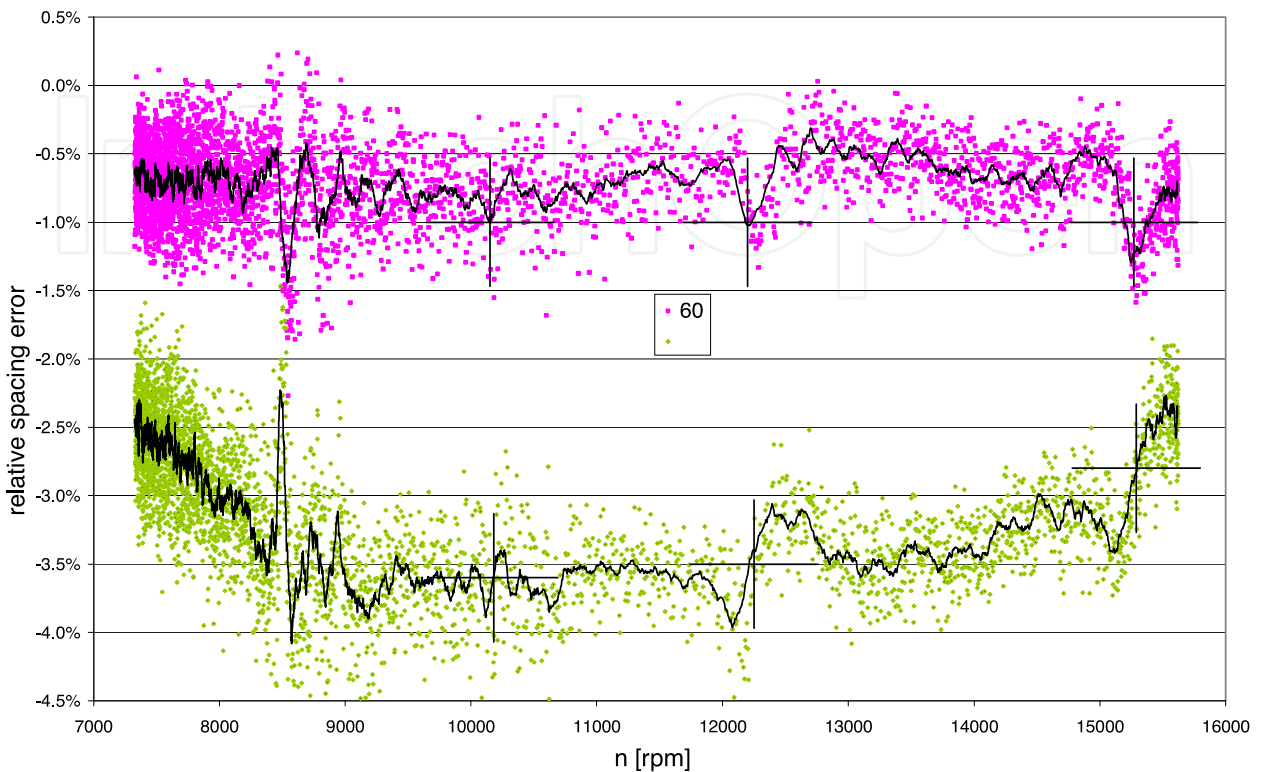


Fig. 32. The relationship between the spacing error and the rotational speed for blade no. 60 and 37. The image presents the resonance effect for the 7th, 6th and 5th engine order.

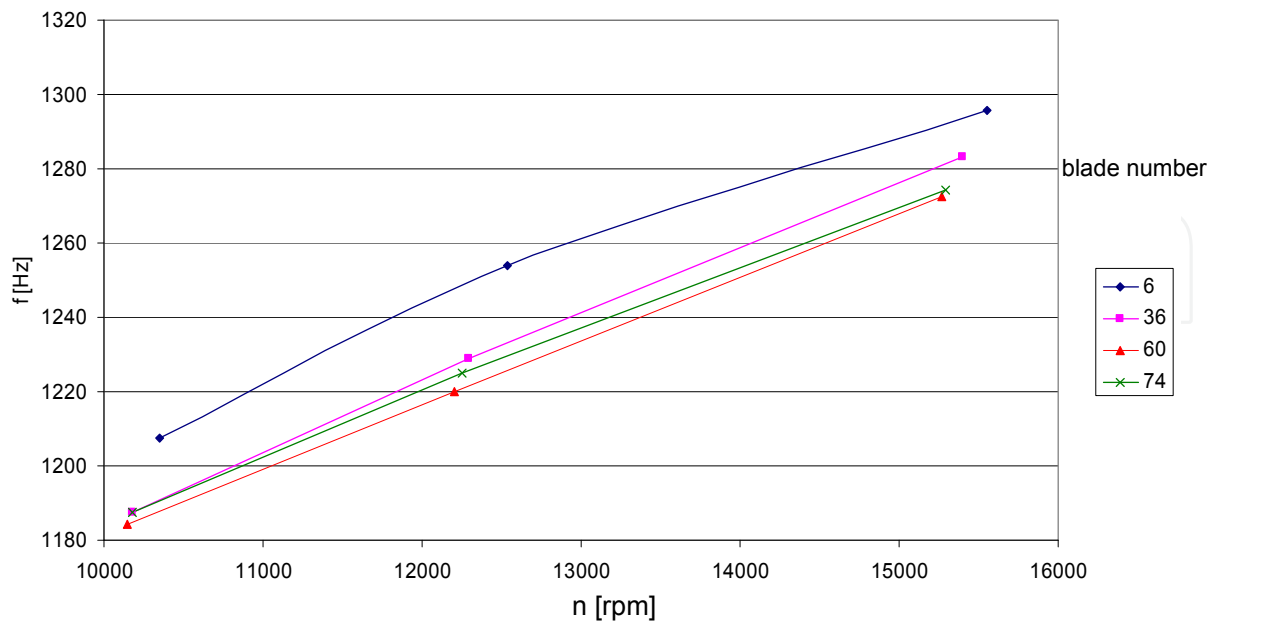


Fig. 33. The relationship between the vibration frequency for selected turbine blades and the rotational speed – Campbell diagram.

The equipment limits for the available instruments (chiefly insufficient spatial resolution and the need to measure very short time intervals $dt < 1 \mu s$), are the reasons that the results from measurements of the vibration amplitudes are burdened by a wide bandwidth noise. It makes the spectral analysis of the spacing error with use of the FFT method as well as the analysis of asynchronous vibrations difficult. Nevertheless the achieved results make it possible to find out blades with vibration frequencies that fail to meet technical requirements and to monitor decrease of free vibration frequency as a result of fatigue crack development.

16. Conclusions

The high-temperature inductive and microwave sensors along with algorithms for data processing developed by the researchers of the Air Force Institute of Technology (ITWL) enable diagnostics of gas turbines. The sensors are suitable for a long-term operation at temperatures typical for gas turbines and can withstand vibrations that occur during operation of jet engines.

The measurement results show that blade vibrations of a turbine in a jet engine achieve the amplitude near 0.1mm for typical input functions and usually not exceeding 0.4 mm under resonance conditions. For the start-up ranges of the engine the circle sections of such a length correspond to the rotation time less than $1 \mu s$. Therefore, the uncertainty related to the determination of time moments for vibration measurements system dedicated to turbine blades should never exceed the value of several dozens of nanoseconds. On the other hand, not only is the signal processing system the source of deviations, but also the microwave sensor itself. The best spatial resolution was achieved for sensors that produce waveforms with a low duty factor of output pulses.

Application of the newly developed method for signal processing enabled, for the first time, to measure vibrations of turbine blades for the aircraft engine with use of the discrete differential method on the basis of signals acquired from prototype microwave sensors. It required a long series of tests with the engine running until the signal was acquired that met the imposed requirements. Alongside, a numerous numerical experiments with the recorded measurement data had to be carried out.

Anyway, non-contact vibration measurements for turbine blades in an aircraft engine are really difficult due to a very low level of vibration amplitudes and unfavourable working environment for the sensor. The conditioning methods developed, supported by technologically advanced circuits for triggering and data acquisition, made it possible to achieve the accuracy better than 0.01% for the tip deflection measurement. The available resolution is sufficient to estimate blade vibration frequency and identify the vibration mode. Developed methods are capable to warn about the excessive level of blade vibrations as well as about frequency change of the synchronous blade vibrations caused by fatigue cracks.

17. References

- Błachnio, J.; Preckajło, S.; Dzięcioł, E. & Sypnik, R. (1985) *A non-contact microwave method for measurements of mechanical motion inside hermetically sealed chambers with flow of stuff under variable pressure* (in Polish), Patent application nr P-259221

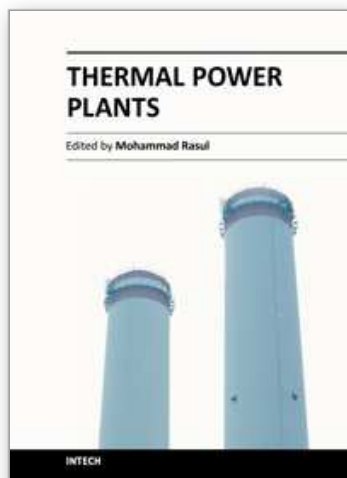
- Courtney, S. (2011) A Robust Process for the Certification of Rotating Components Using Blade Tip Timing Measurements. *Proceedings of ISA International Instrumentation Symposium*, June 2011, St. Louis, MO USA
- Dzięcioł, E. (2003). *A Microwave Homodyne System for Condition Monitoring of a Turbine Blade in an Aircraft engine*. PhD Thesis (in Polish), Air Force Institute of Technology (ITWL), Warsaw
- Dzięcioł, E. (2004). *Method of a Continuous Determination of an Instantaneous Position of an Blade Tip in a Rotor Turbine Machine*. US Patent 6,833,793
- ENSIP (2004). *Engine Structural Integrity Program*. MIL-HDBK-1783B, Department Of Defense, USA. Available from: www.everyspec.com
- Fogale nanotech (2011). Capacitive Blade Tip Clearance & Tip Timing measurement system. In: http://www.fogale.fr/media/blade/DS_TUR_UK_V02_WEB.pdf
- Geisheimer, J.; Greneker, G. & Billington, S. (2002). *Phase-based sensing system*. US Patent 6,489,917
- Gilboy, M.T.; Cardwell, D.N.; Chana, K.S. (2009). Autonomous foreign object impact detection using eddy current sensors. *Proceedings of 4th EVI-GTI International Gas Turbine Instrumentation Conference*, September, 2009, Norrköping, Sweden
- Grzybowski, R. (1998). *Microwave recess distance and air-path clearance sensor*. US Patent 5,818,242
- Hayes, T.; Hayes, B.; Bynum K. (2011). Utilizing Non-Contact Stress Measurement System (NSMS) as a Health Monitor. *Proceedings of 57th International Instrumentation Symposium*, June 2011, St. Louis, Mo USA
- Heath, S. (2000). A New Technique for Identifying Synchronous Resonances Using Tip-Timing. *ASME Journal of Engineering for Gas Turbines and Power*. Vol. 122, No. 2
- Holst, T.A. (2005). *Analysis of Spatial Filtering In Phase-Based Microwave Measurements of Turbine Blade Tips*. Georgia Institute of Technology Master Thesis. Atlanta USA
- Loftus, P. (2010). *Determination of blade vibration frequencies and/or amplitudes*. US Patent application no. 20100179775
- Madden, R. (2010). UK Blade Tip Timing. A customer perspective. *Proceedings of ISA International Instrumentation Symposium*, May 2010, Rochester, NY USA
- Millar, R.C. (2011). Turbo-Machinery Monitoring Measures for Propulsion Safety and Affordable Readiness. *Proceedings of 57th International Instrumentation Symposium*, June 2011, St. Louis, Mo USA
- Nicholas, T. (2006). *High cycle fatigue: a mechanics of materials perspective*, Elsevier, ISBN 978-0080446912, Oxford, UK
- Nyfors, E. (2000). Industrial Microwave Sensors – A Review. *Subsurface Sensing Technologies and Applications*, Vol. 1, No. 1
- Poznańska, A. (2000). *Lifetime of Turbojet Blades Made up of the EI-867 Alloy with Consideration of Non-Uniform Deflections and Structural Changes*. PhD Thesis (in Polish). Technical University of Rzeszów

- Przysowa, R.; Spychała J. (2008). Health Monitoring of Turbomachinery Based on Blade Tip-Timing and Tip-Clearance. RTO-MP-AVT-157-P14. In: *Ensured Military Platform Availability*. Available from: www.rta.nato.int
- Roberts J.P. (2007). Comparison of Tip Timing with strain gauges for rotor blade vibration measurement. In: *Proceedings of Lecture Series on Tip Timing and Tip Clearance Problems in Turbomachines*. Von Karman Institute. Belgium
- Rokicki, E.; Weryński, P.; Szczepanik, R.; Spychała, J.; Michalak, S.; Perz, M. & Przysowa, R. (2007). *A differential antenna* (in Polish). Patent application no. P381806
- Ross, M.M. (2007). The Potentials Of Tip Timing / Tip Clearance Measurements. The Land Based Power Plant Perspective. In: *Tip Timing and Tip Clearance Problems in Turbomachines*. 2007. VKI LS 2007-03, von Karman Institute, Belgium.
- Rushard, P. (2010) A Process for the Application of Blade Tip Timing Measurements on a Gas Turbine. *Proceedings of ISA International Instrumentation Symposium*, May 2010, Rochester, NY USA
- Shephard, D.; Tait, P. & King, R. (2000). Foreign Object Detection Using Radar. In: *Aerospace Conference Proceedings*, IEEE, Volume: 6, pp. 43-48
- Szczepanik, R. & Witoś, M. (1998). A computer diagnostic system for turbojet engines based on the discrete phase method for measurement of blade vibration (in Polish). In: *Output of Aviation Institute*, No. 1 (152), p. 135-149.
- Wagner, M. (1998). Novel microwave vibration monitoring system for industrial power generating turbines. *Proceedings of Microwave Symposium Digest*, IEEE MTT-S International, pp.1211-1214 vol.3
- Wenger, J. (1997). An MMIC-based microwave sensor for accurate clearance measurements in aircraft engines. *Proceedings of 27th European Microwave Conference and Exhibition*. Vol. 2, pp. 1122-1126
- Witoś, M. (1994). *A Non-Contact Technique of Vibration Measurement Applied to Health Monitoring of Compressor Blades in a Turbine Engine* (in Polish), PhD Thesis, Air Force Institute of Technology (ITWL), Warsaw
- Witoś, M. (1999). Blade vibration as a symptom for condition monitoring of aircraft engines. In: *Issues of testing and operation of avionics equipment*. Air Force Institute of Technology (ITWL), Warsaw, vol. 4, pp. 297-315
- Witoś, M. & Szczepanik, R. (2005). Turbine Engine Health/Maintenance Status Monitoring with Use of Phase-Discrete Method of Blade Vibration Monitoring, *Proceedings of Symposium on "Evaluation, Control and Prevention of High Cycle Fatigue in Gas Turbine Engines for Land, Sea and Air Vehicles*. RTO-MP-AVT-121-02. Granada, October 2005
- Witoś, M. (2007). Theoretical Foundations of Tip Timing Measurements. *Proceedings of Lecture Series on Tip Timing and Tip Clearance Problems in Turbomachines*. Von Karman Institute. Belgium
- Zablockij, I. E.; Korostiliew, J.A. & Szipow, R.A. (1977). *Non-contact blade vibration measurement in turbomachinery* (in Russian). Maszynostrojenije. Moscow
- Zielinski, M. & Ziller, G. (2005). Noncontact Blade Vibration Measurement System for Aero Engine Application. *Proceedings of 17th International Symposium on Airbreathing Engines*, September, 2005. Munich, Germany, Paper No. ISABE-2005-1220

Żółtowski, B. (1984). Design of experiments in machinery diagnostics (in Polish), In: *Scientific dissertations*, WSO Toruń, Vol. No. 1, pp. 61-64, Toruń

IntechOpen

IntechOpen



Thermal Power Plants

Edited by Dr. Mohammad Rasul

ISBN 978-953-307-952-3

Hard cover, 266 pages

Publisher InTech

Published online 13, January, 2012

Published in print edition January, 2012

Thermal power plants are one of the most important process industries for engineering professionals. Over the past few decades, the power sector has been facing a number of critical issues. However, the most fundamental challenge is meeting the growing power demand in sustainable and efficient ways. Practicing power plant engineers not only look after operation and maintenance of the plant, but also look after a range of activities, including research and development, starting from power generation, to environmental assessment of power plants. The book *Thermal Power Plants* covers features, operational issues, advantages, and limitations of power plants, as well as benefits of renewable power generation. It also introduces thermal performance analysis, fuel combustion issues, performance monitoring and modelling, plants health monitoring, including component fault diagnosis and prognosis, functional analysis, economics of plant operation and maintenance, and environmental aspects. This book addresses several issues related to both coal fired and gas turbine power plants. The book is suitable for both undergraduate and research for higher degree students, and of course, for practicing power plant engineers.

How to reference

In order to correctly reference this scholarly work, feel free to copy and paste the following:

Ryszard Szczepanik, Radosław Przysowa, Jarosław Spychała, Edward Rokicki, Krzysztof Kaźmierczak and Paweł Majewski (2012). Application of Blade-Tip Sensors to Blade-Vibration Monitoring in Gas Turbines, *Thermal Power Plants*, Dr. Mohammad Rasul (Ed.), ISBN: 978-953-307-952-3, InTech, Available from: <http://www.intechopen.com/books/thermal-power-plants/application-of-blade-tip-sensors-to-blade-vibration-monitoring-in-gas-turbines>

INTECH
open science | open minds

InTech Europe

University Campus STeP Ri
Slavka Krautzeka 83/A
51000 Rijeka, Croatia
Phone: +385 (51) 770 447
Fax: +385 (51) 686 166
www.intechopen.com

InTech China

Unit 405, Office Block, Hotel Equatorial Shanghai
No.65, Yan An Road (West), Shanghai, 200040, China
中国上海市延安西路65号上海国际贵都大饭店办公楼405单元
Phone: +86-21-62489820
Fax: +86-21-62489821

© 2012 The Author(s). Licensee IntechOpen. This is an open access article distributed under the terms of the [Creative Commons Attribution 3.0 License](https://creativecommons.org/licenses/by/3.0/), which permits unrestricted use, distribution, and reproduction in any medium, provided the original work is properly cited.

IntechOpen

IntechOpen